



## Texas Crop Progress and Condition

Southern Plains Regional Field Office  
Post Office Box 70 Austin, Texas 78767  
(800) 626-3142 · FAX (855) 270-2725 · [www.nass.usda.gov/tx](http://www.nass.usda.gov/tx)

**Issue: TX-CW3623**

**Weekly Summary for September 18 - September 24**

**Released: September 25, 2023**

Warmer temperatures returned across the state, while some districts reported hail from scattered storms. Rainfall ranged from none to 3 inches with the Cross Timbers and the Blacklands receiving the most rain. Drought conditions ranged from none to exceptional drought with areas in South Central and the Upper Coast being the driest. There was an average of 6.0 days suitable for fieldwork.

### **Row Crops:**

In the Northern High Plains, some corn and sorghum fields were damaged by scattered hailstorms. Corn harvest continued across the state with 73 percent harvested. Corn mature reached 88 percent, down 4 points from the previous year. Sorghum harvest reached 80 percent, down 1 point from the previous year. The cotton crop continued to show signs of stress due to lack of rainfall and high temperatures. Cotton bolls opening reached 59 percent for the state, down 2 points from the previous year. Cotton harvested reached 24 percent, unchanged from the previous year. Sunflowers harvest reached 70 percent, down 4 points from the previous year. Rice harvest continued, with more rice straw being cut. Rice harvested reached 92 percent, down 1 point from the previous year. In the Blacklands, most soybeans have been harvested. Soybean harvested reached 40 percent, up 10 points from the previous year. In South Texas, peanuts remained under irrigation and digging has started. Peanuts mature reached 32 percent, down 1 point from the previous year.

### **Fruit, Vegetable, and Specialty Crops:**

In South Texas, most of the vegetable crops were finished for the summer season. Also, in South Texas, early strawberry planting was almost completed. In the Trans-Pecos district, some pecans were cracking open in the shells and harvest of some varieties was nearing completion.

### **Livestock, Range and Pasture:**

Range and pasture conditions in parts of the state improved with recent rains, while other parts remained poor or declined. Range and pasture condition was rated very poor to poor. Livestock producers continued to supplement stock with hay. Producers in some districts continued to cull their herds.

### Crop Progress

Stage	Percent of Acreage			
	Current Week	Previous Week	Previous Year	5 Year Average
<b>Corn</b>				
Mature	88	82	92	86
Harvested	73	68	71	71
<b>Cotton</b>				
Bolls Opening	59	52	61	55
Harvested	24	20	24	21
<b>Peanuts</b>				
Mature	32	25	33	28
<b>Rice</b>				
Harvested	92	90	93	95
<b>Sorghum</b>				
Mature	91	85	96	89
Harvested	80	75	81	80
<b>Soybeans</b>				
Dropping Leaves	83	76	86	80
Harvested	40	26	30	50
<b>Sunflowers</b>				
Harvested	70	63	74	67
<b>Winter Wheat</b>				
Planted	30	15	42	32
Emerged	12	(NA)	12	6

(NA) Not available.

### Crop Condition

Crop	Percent of Acreage					Index <sup>1</sup>	
	Excellent	Good	Fair	Poor	Very Poor	2023	2022
Corn	12	37	27	15	9	67	42
Cotton	1	9	25	32	33	34	38
Peanuts	0	31	35	23	11	54	62
Rice	8	55	35	2	0	80	79
Sorghum	16	29	22	17	16	62	48
Soybeans	8	28	36	23	5	60	40
Range and Pasture	1	6	24	30	39	28	45

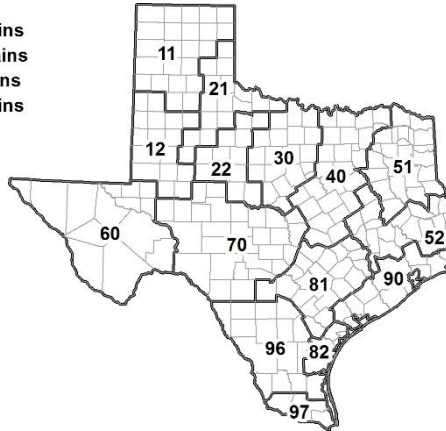
<sup>1</sup> The formula for the condition index is  $I = (5V + 25P + 60F + 90G + 110E)/100$  where I = crop condition index and V, P, F, G, E = percentage of crop rated very poor, poor, fair, good, excellent.

### Soil Moisture and Days Suitable by District

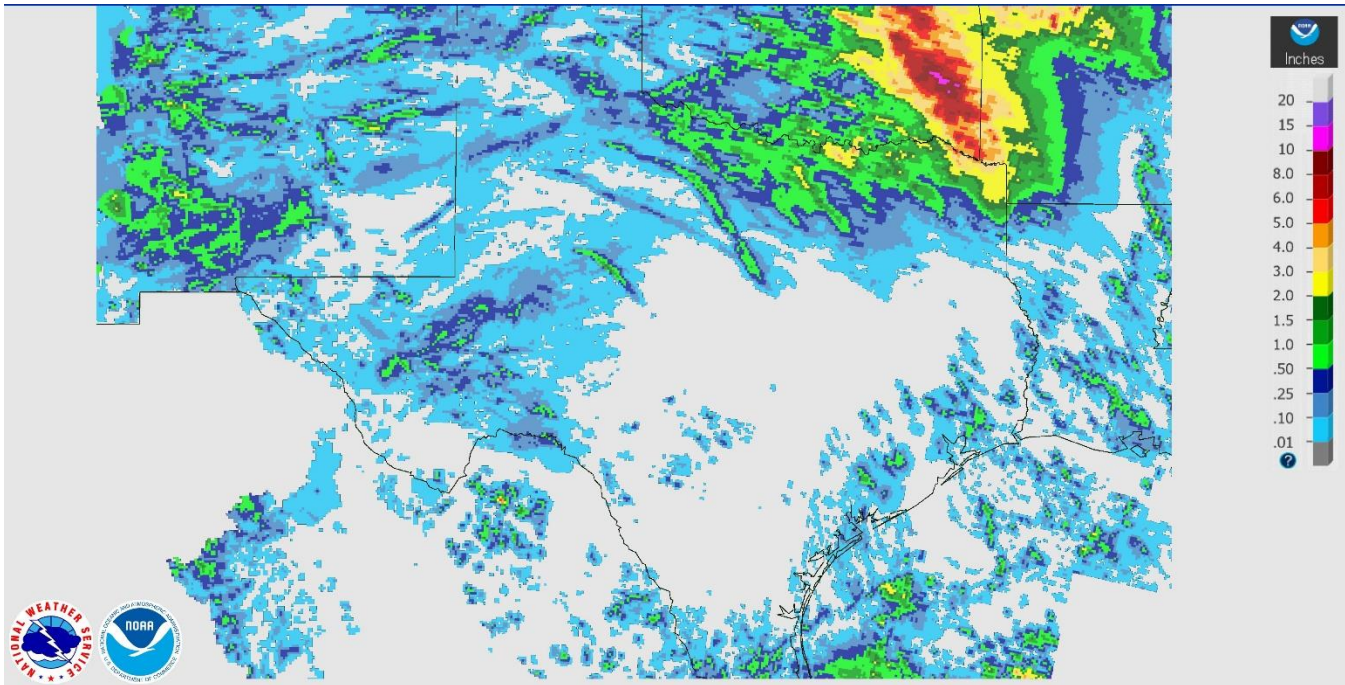
District	Subsoil Moisture Condition by District				Topsoil Moisture Condition by District				Days Suitable for Fieldwork
	Percentage of Acreage				Percentage of Acreage				
	Very Short	Short	Adequate	Surplus	Very Short	Short	Adequate	Surplus	
11	12	30	56	2	7	31	60	2	5.2
12	42	54	4	0	28	37	35	0	6.9
21	31	60	9	0	58	25	17	0	5.7
22	28	49	23	0	19	38	43	0	5.7
30	56	33	11	0	43	34	21	2	5.8
40	55	37	8	0	46	33	21	0	5.6
51	51	32	16	1	43	35	21	1	6.3
52	35	49	16	0	29	51	20	0	6.6
60	5	46	38	11	5	46	38	11	6.6
70	47	21	32	0	30	42	27	1	6.0
81	64	24	12	0	54	32	13	1	6.3
82	22	20	58	0	22	20	58	0	7.0
90	60	26	14	0	53	33	14	0	6.4
96	39	46	14	1	39	43	17	1	6.6
97	25	74	1	0	82	17	1	0	7.0
State	37	40	22	1	33	33	33	1	6.0

### Texas Agricultural Districts

- 11 Northern High Plains
- 12 Southern High Plains
- 21 Northern Low Plains
- 22 Southern Low Plains
- 30 Cross Timbers
- 40 Blacklands
- 51 North East
- 52 South East
- 60 Trans-Pecos
- 70 Edwards Plateau
- 81 South Central
- 82 Coastal Bend
- 90 Upper Coast
- 96 South
- 97 Lower Valley

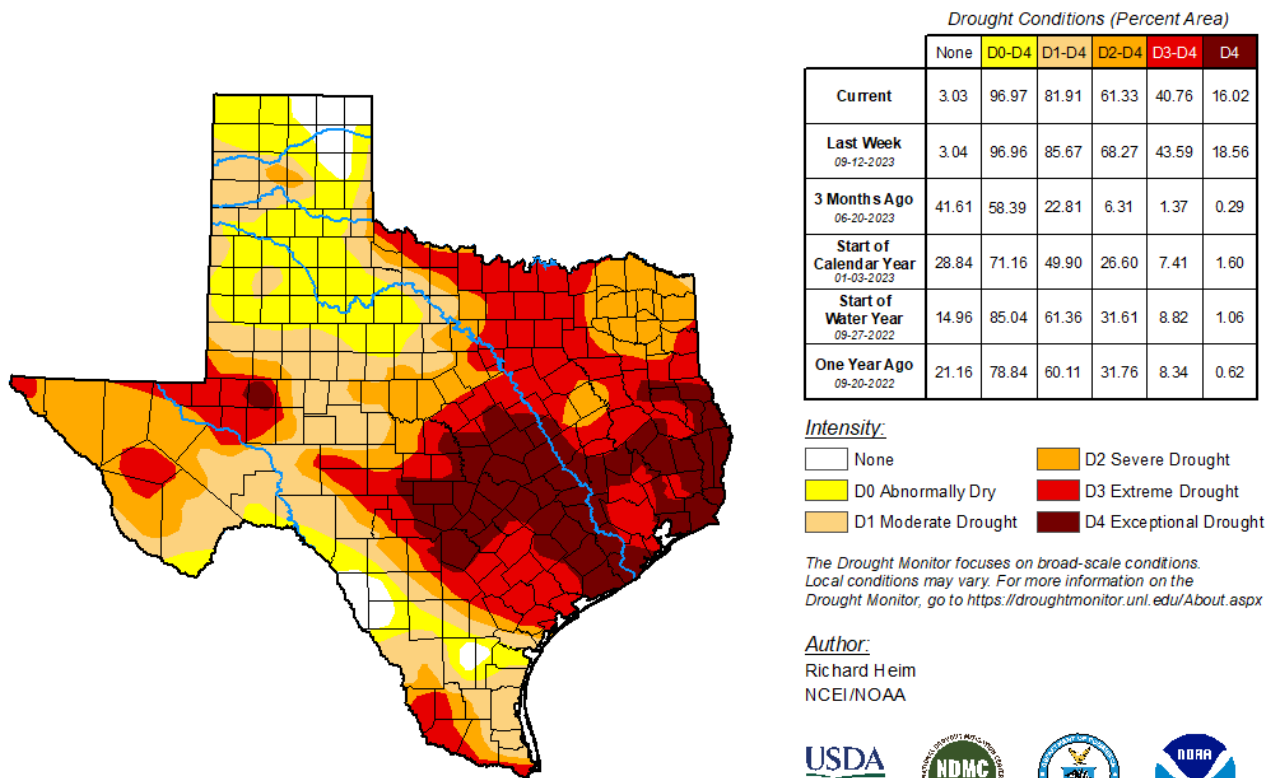


## Seven Day Observed Regional Precipitation, September 24, 2023.



Source: National Weather Service, [www.nws.noaa.gov](http://www.nws.noaa.gov)

## Drought Monitor, September 25, 2023.



[droughtmonitor.unl.edu](http://droughtmonitor.unl.edu)

Source: National Drought Mitigation Center, a partnership with USDA, U.S. Department of Commerce/NOAA, <http://droughtmonitor.unl.edu>