



Texas Crop Progress and Condition

Southern Plains Regional Field Office
Post Office Box 70 Austin, Texas 78767
(800) 626-3142 · FAX (855) 270-2725 · www.nass.usda.gov/tx

Issue: TX-CW3722

Weekly Summary for September 26 - October 2

Released: October 3, 2022

Most of the state received no precipitation this week while areas of the Lower Valley, South Texas, the Coastal Bend, the Edwards Plateau, the Cross Timbers, the Blacklands, Northeast Texas, the Plains, and the Trans Pecos received from trace amounts up to 3 inches of precipitation. Drought conditions ranged from none to exceptionally dry, with isolated parts of South Central Texas, the Southern High Plains, and the Blacklands being the driest. There was an average of 6.9 days suitable for fieldwork, up from 6.8 days the previous week.

Small Grains: Across the state, some producers have decided to delay or not plant wheat due to dry conditions. In the Edwards Plateau, there were reports of drought-stressed wheat. Some producers in North East and South Central Texas have planted oats, but expressed concerns with the drought conditions.

Row Crops: Corn harvest continued in areas of the High Plains. In the Northern Plains, it was reported that cotton harvest is approaching in the coming weeks. In the Coastal Bend and South Texas, cotton harvest continued; there were some counties that finished harvest in the Lower Valley.

Livestock, Range and Pasture: Supplemental feeding continued. Across much of the state there has been evidence of damage from the fall armyworm in hay fields and pasture. Range and pasture conditions were rated 55 percent fair to poor.

Crop Progress

Stage	Percent of Acreage			
	Current Week	Previous Week	Previous Year	5 Year Average
Corn				
Mature	96	93	97	89
Harvested	80	72	86	76
Cotton				
Bolls Opening	70	62	63	66
Harvested	31	25	23	23
Peanuts				
Mature	41	34	40	33
Harvested	9	(NA)	10	6
Rice				
Harvested	96	93	98	99
Sorghum				
Harvested	91	82	83	81
Soybeans				
Dropping Leaves	95	87	94	84
Harvested	41	31	68	64
Sunflowers				
Harvested	82	75	72	67
Winter Wheat				
Planted	48	44	46	43
Emerged	18	9	18	14
Oats				
Planted	37	23	34	31
Emerged	11	(NA)	7	6

(NA) Not available.

Crop Condition

Crop	Percent of Acreage					Index ¹	
	Excellent	Good	Fair	Poor	Very Poor	2022	2021
Corn	3	14	31	23	29	42	78
Cotton	1	9	21	48	21	35	77
Peanuts	0	30	51	15	4	62	80
Rice	22	29	48	1	0	79	-3
Sorghum	1	16	41	29	13	48	79
Soybeans	1	13	30	29	27	39	-3
Range and Pasture	5	13	30	25	27	43	54

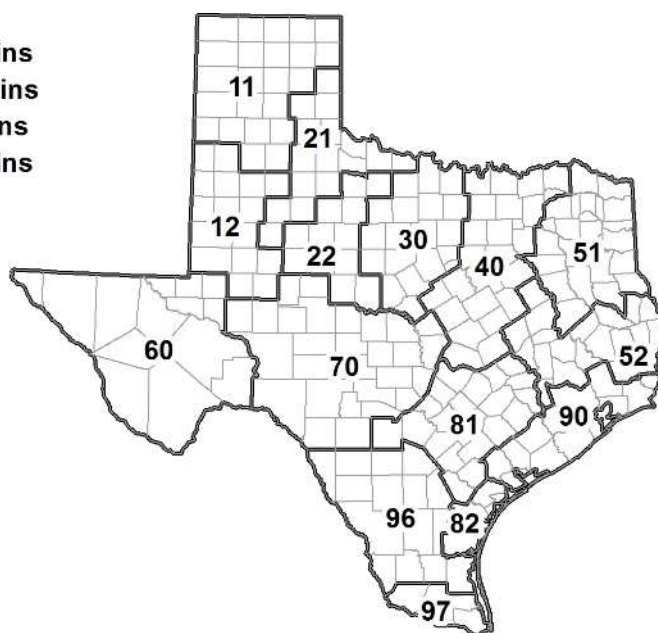
¹ The formula for the condition index is $I = (5V + 25P + 60F + 90G + 110E)/100$ where I = crop condition index and V, P, F, G, E = percentage of crop rated very poor, poor, fair, good, excellent.

Soil Moisture and Days Suitable by District

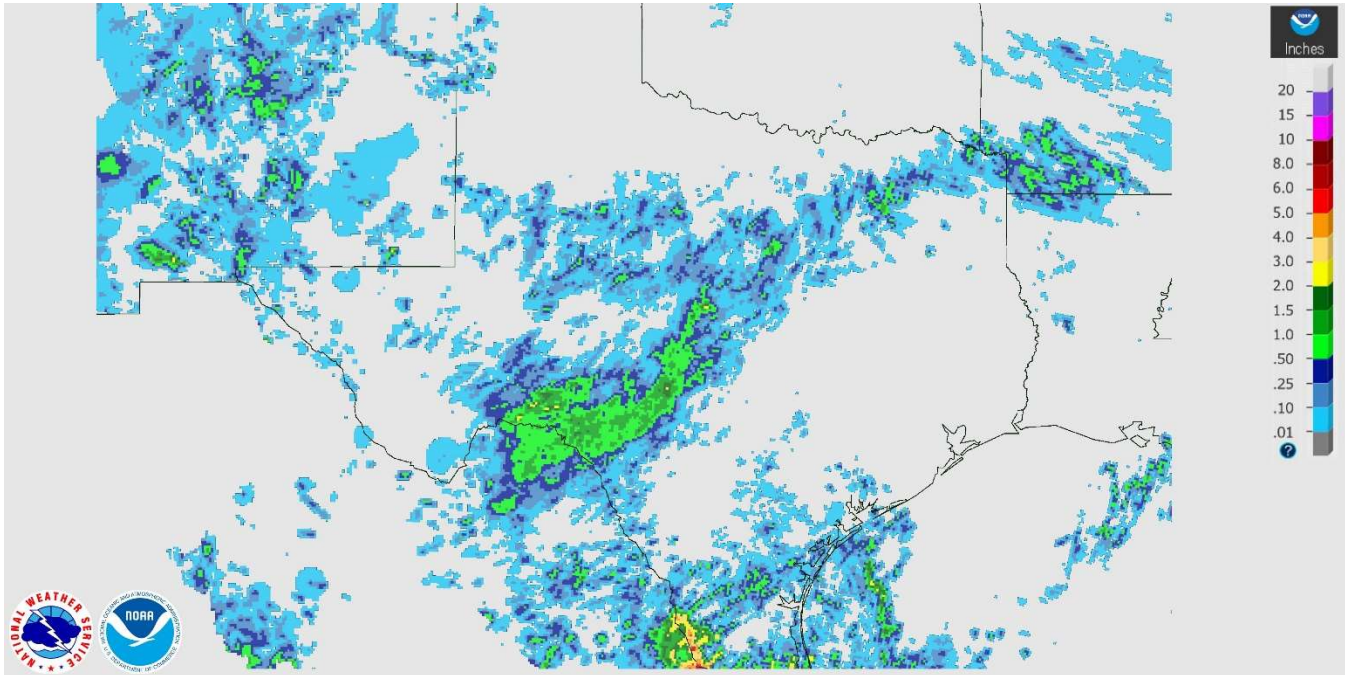
District	Subsoil Moisture Condition by District				Topsoil Moisture Condition by District				Days Suitable for Fieldwork
	Percentage of Acreage				Percentage of Acreage				
	Very Short	Short	Adequate	Surplus	Very Short	Short	Adequate	Surplus	
11	32	49	19	0	38	29	33	0	7.0
12	50	50	0	0	45	5	50	0	7.0
21	43	39	18	0	58	24	18	0	6.3
22	85	15	0	0	36	14	50	0	6.9
30	39	49	12	0	23	51	26	0	6.3
40	45	42	13	0	56	37	7	0	7.0
51	30	64	6	0	32	44	24	0	6.9
52	26	55	19	0	32	52	16	0	7.0
60	5	26	45	24	5	26	46	23	6.2
70	50	49	1	0	83	15	2	0	7.0
81	83	17	0	0	53	16	31	0	7.0
82	0	13	87	0	0	26	74	0	7.0
90	4	43	47	6	7	58	32	3	7.0
96	24	40	35	1	22	42	36	0	6.9
97	5	17	78	0	5	83	12	0	7.0
State	42	41	16	1	40	28	32	0	6.9

Texas Agricultural Districts

- 11 Northern High Plains
- 12 Southern High Plains
- 21 Northern Low Plains
- 22 Southern Low Plains
- 30 Cross Timbers
- 40 Blacklands
- 51 North East
- 52 South East
- 60 Trans-Pecos
- 70 Edwards Plateau
- 81 South Central
- 82 Coastal Bend
- 90 Upper Coast
- 96 South
- 97 Lower Valley

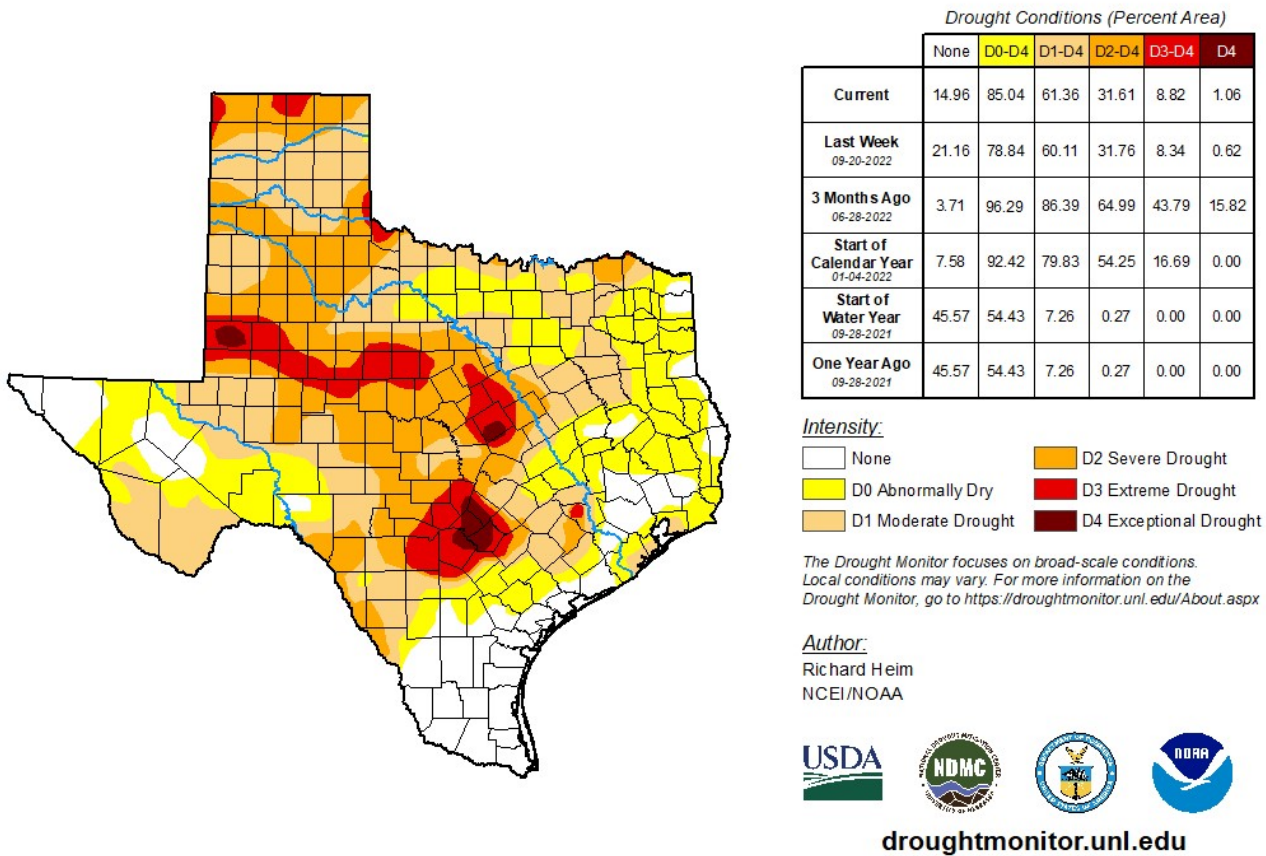


Seven Day Observed Regional Precipitation, October 2, 2022.



Source: National Weather Service, www.nws.noaa.gov

Drought Monitor, Valid September 27, 2022.



Source: National Drought Mitigation Center, a partnership with USDA, U.S. Department of Commerce/NOAA, <http://droughtmonitor.unl.edu>