



# Texas Crop Progress and Condition

Southern Plains Regional Field Office  
Post Office Box 70 Austin, Texas 78767  
(800) 626-3142 · FAX (855) 270-2725 · www.nass.usda.gov/tx

**Issue: TX-CW3922**

**Weekly Summary for October 3 - October 9**

**Released: October 11, 2022**

Most of the state received no precipitation this week while areas of the Trans-Pecos, Lower Valley, Coastal Bend, Cross Timbers, Plains, and South Texas, received from trace amounts up to 3 inches of precipitation. Drought conditions ranged from none to exceptionally dry, with isolated parts of South Central Texas, the Plains, and the Blacklands being the driest. There was an average of 6.6 days suitable for fieldwork, down from 6.9 days the previous week.

**Small Grains:** Across the state, wheat planting has continued or has been completed; there were concerns with the lack of moisture for germination. Some producers were still holding off on planting in hopes for rain. In South Texas, some ranchers cultivated land in preparation for winter months.

**Row Crops:** Cotton harvest was winding down in the southernmost districts of the state. In the Blacklands and Cross Timbers, there were reports of very poor cotton yields and fields being abandoned. In the Plains, where harvest was just beginning, bolls were opening and harvest aids were being applied. In the Blacklands and Cross timbers there were reports of non-irrigated being complete losses or having poor yields.

**Livestock, Range and Pasture:** Supplemental feeding continued. In South Texas, some producers have halted planting due to Fall Army Worm issues. It was reported pasture conditions are on the decline across the state in areas that have not received much rain. Range and pasture conditions were rated 57 percent fair to poor.

## Crop Progress

Stage	Percent of Acreage			
	Current Week	Previous Week	Previous Year	5 Year Average
<b>Corn</b>				
Harvested	85	80	88	79
<b>Cotton</b>				
Bolls Opening	78	70	71	74
Harvested	35	31	28	28
<b>Peanuts</b>				
Mature	51	41	50	42
Harvested	18	9	18	12
<b>Sorghum</b>				
Harvested	95	91	87	83
<b>Soybeans</b>				
Harvested	55	41	73	70
<b>Sunflowers</b>				
Harvested	85	82	75	69
<b>Winter Wheat</b>				
Planted	58	48	53	54
Emerged	28	19	28	29
<b>Oats</b>				
Planted	51	37	43	43
Emerged	21	11	15	14

### Crop Condition

Crop	Percent of Acreage					Index <sup>1</sup>	
	Excellent	Good	Fair	Poor	Very Poor	2022	2021
Corn	3	14	31	23	29	42	78
Cotton	2	8	18	51	21	34	79
Peanuts	1	30	50	15	4	62	84
Sorghum	1	16	41	29	13	48	79
Soybeans	1	12	24	28	35	35	-3
Range and Pasture	2	12	30	27	29	39	55

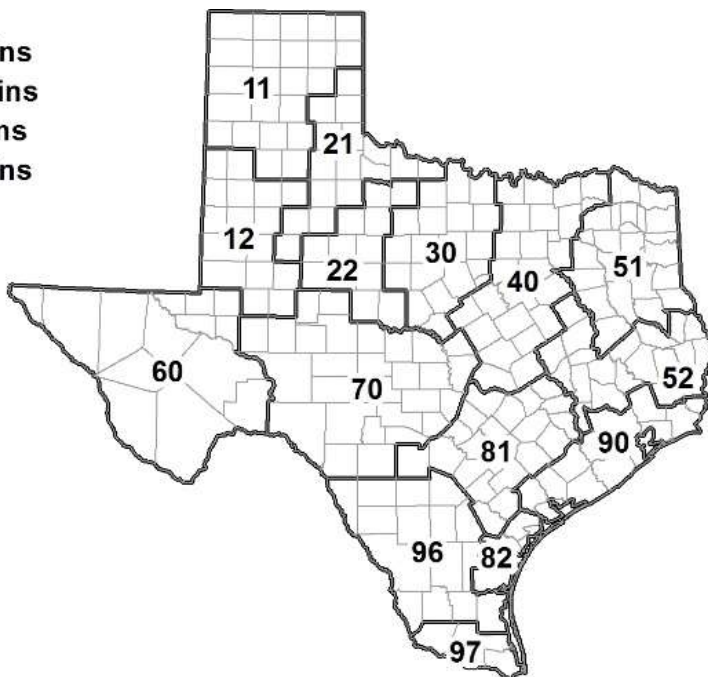
<sup>1</sup> The formula for the condition index is  $I = (5V + 25P + 60F + 90G + 110E)/100$  where I = crop condition index and V, P, F, G, E = percentage of crop rated very poor, poor, fair, good, excellent.

### Soil Moisture and Days Suitable by District

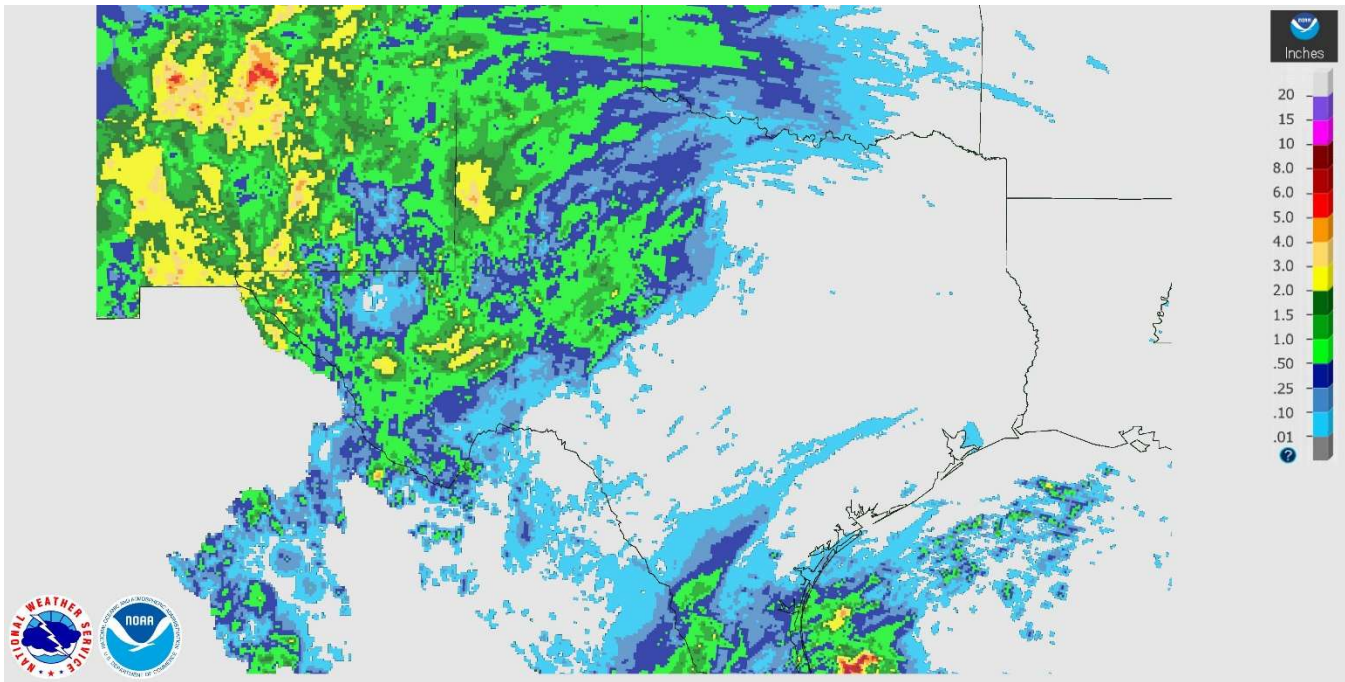
District	Subsoil Moisture Condition by District				Topsoil Moisture Condition by District				Days Suitable for Fieldwork
	Percentage of Acreage				Percentage of Acreage				
	Very Short	Short	Adequate	Surplus	Very Short	Short	Adequate	Surplus	
11	37	46	16	1	45	27	25	3	5.6
12	70	30	0	0	65	15	20	0	7.0
21	43	42	15	0	64	21	15	0	7.0
22	58	32	10	0	39	19	39	3	6.6
30	49	42	9	0	23	39	35	3	6.5
40	46	42	12	0	58	31	11	0	7.0
51	31	60	7	2	48	41	9	2	6.9
52	29	67	4	0	35	63	2	0	7.0
60	6	17	74	3	3	17	77	3	5.9
70	76	23	1	0	80	17	3	0	7.0
81	88	10	2	0	79	16	5	0	6.7
82	0	25	75	0	0	37	63	0	7.0
90	11	34	54	1	11	49	39	1	6.3
96	41	37	21	1	38	38	24	0	6.5
97	7	15	72	6	10	60	29	1	6.4
State	47	37	15	1	48	28	23	1	6.6

### Texas Agricultural Districts

- 11 Northern High Plains
- 12 Southern High Plains
- 21 Northern Low Plains
- 22 Southern Low Plains
- 30 Cross Timbers
- 40 Blacklands
- 51 North East
- 52 South East
- 60 Trans-Pecos
- 70 Edwards Plateau
- 81 South Central
- 82 Coastal Bend
- 90 Upper Coast
- 96 South
- 97 Lower Valley

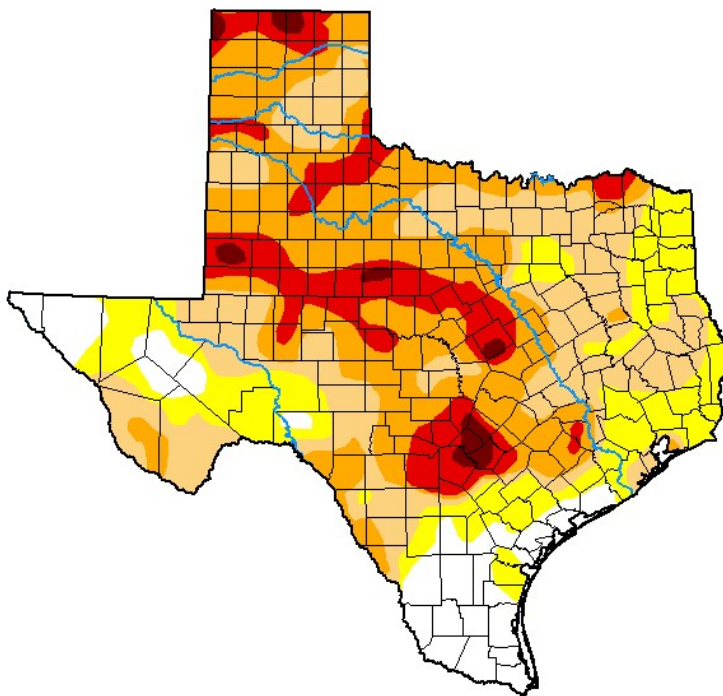


**Seven Day Observed Regional Precipitation, October 9, 2022.**



Source: National Weather Service, [www.nws.noaa.gov](http://www.nws.noaa.gov)

**Drought Monitor, Valid October 4, 2022.**



*Drought Conditions (Percent Area)*

	None	D0-D4	D1-D4	D2-D4	D3-D4	D4
<b>Current</b>	10.94	89.06	71.07	43.13	14.01	1.63
<b>Last Week</b> <i>09-27-2022</i>	14.96	85.04	61.36	31.61	8.82	1.06
<b>3 Months Ago</b> <i>07-05-2022</i>	2.47	97.53	86.79	66.05	45.91	16.11
<b>Start of Calendar Year</b> <i>01-04-2022</i>	7.58	92.42	79.83	54.25	16.69	0.00
<b>Start of Water Year</b> <i>09-27-2022</i>	14.96	85.04	61.36	31.61	8.82	1.06
<b>One Year Ago</b> <i>10-05-2021</i>	55.05	44.95	8.26	0.27	0.00	0.00

Intensity:

- None
- D0 Abnormally Dry
- D1 Moderate Drought
- D2 Severe Drought
- D3 Extreme Drought
- D4 Exceptional Drought

*The Drought Monitor focuses on broad-scale conditions. Local conditions may vary. For more information on the Drought Monitor, go to <https://droughtmonitor.unl.edu/About.aspx>*

Author:

Brad Pugh  
CPC/NOAA



[droughtmonitor.unl.edu](http://droughtmonitor.unl.edu)

Source: National Drought Mitigation Center, a partnership with USDA, U.S. Department of Commerce/NOAA, <http://droughtmonitor.unl.edu>