



# Texas Crop Progress and Condition

Southern Plains Regional Field Office  
Post Office Box 70 Austin, Texas 78767  
(800) 626-3142 · FAX (855) 270-2725 · www.nass.usda.gov/tx

**Issue: TX-CW4021**

**Weekly Summary for October 18-October 24**

**Released: October 25**

Most of the state received from trace amounts upwards to 2.0 inches of precipitation with most of the precipitation concentrated in South Texas and the Upper Coast. There was an average of 6.1 days suitable for fieldwork.

**Small Grains:** Winter wheat emerged increased to 46 percent, down 2 points from the previous year and down 3 points from normal. Oats emerged reached 38 percent, down 1 point from the previous year and down 5 points from normal.

**Row Crops:** Corn harvested increased to 94 percent, up 6 points from the previous year and up 9 points from normal. Cotton harvested reached 40 percent, down 7 points from the previous year but up 4 points from normal. Peanuts harvested reached 30 percent, down 3 points from the previous year and down 4 points from normal. Sorghum harvested reached 95 percent, unchanged from the previous year but up 9 points from normal. Soybeans harvested reached 86 percent, up 7 points from the previous year and up 6 points from normal.

**Fruit, Vegetable and Specialty Crops:** Producers have begun harvesting pumpkins, peppers, and onions in the Trans-Pecos. Pecan harvest in the Edwards Plateau, Trans-Pecos, and South Central Texas have begun.

**Livestock, Range and Pasture:** Supplemental feeding continued in various areas across the state. The horse fly population was increasing in some areas of Northeast Texas. Pastures were reported in good condition in various areas of Central Texas with other areas reporting needing more moisture. The pasture and range condition was rated mostly fair to good.

## Crop Progress

Stage	Percent of Acreage			
	Current Week	Previous Week	Previous Year	5 Year Average
<b>Corn</b>				
Harvested	94	90	88	85
<b>Cotton</b>				
Bolls Opening	89	83	94	89
Harvested	40	35	47	36
<b>Peanuts</b>				
Matured	62	56	53	53
Harvested	30	24	33	34
<b>Sorghum</b>				
Harvested	95	92	95	86
<b>Soybeans</b>				
Harvested	86	77	79	80
<b>Sunflowers</b>				
Harvested	84	78	82	75
<b>Winter Wheat</b>				
Planted	72	64	70	69
Emerged	46	39	48	49
<b>Oats</b>				
Planted	75	61	71	73
Emerged	42	28	39	43

(NA) Not available.

### Crop Condition

Crop	Percent of Acreage					Index <sup>1</sup>	
	Excellent	Good	Fair	Poor	Very Poor	2021	2020
Corn	17	44	29	9	1	78	67
Cotton	19	43	33	4	1	80	51
Peanuts	19	55	25	1	0	86	75
Sorghum	15	48	28	8	1	79	67
Soybeans	5	45	40	7	3	72	81
Range and Pasture	7	27	36	21	9	59	49

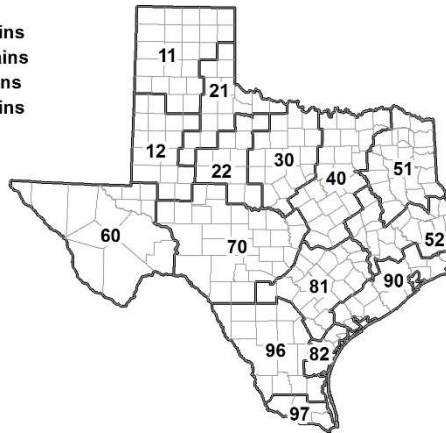
<sup>1</sup> The formula for the condition index is  $I = (5V + 25P + 60F + 90G + 110E)/100$  where I = crop condition index and V, P, F, G, E = percentage of crop rated very poor, poor, fair, good, excellent.

### Soil Moisture and Days Suitable by District

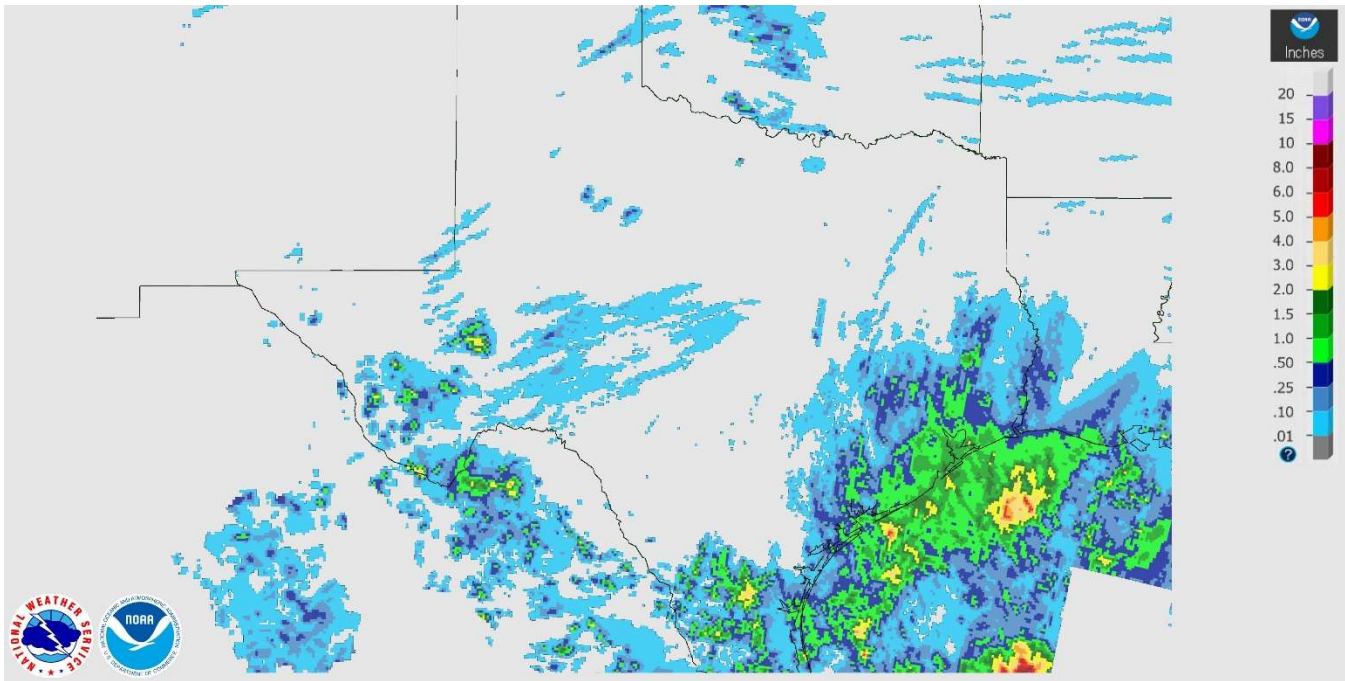
District	Topsoil Moisture Condition by District				Subsoil Moisture Condition by District				Days Suitable for Fieldwork
	Percentage of Acreage				Percentage of Acreage				
	Very Short	Short	Adequate	Surplus	Very Short	Short	Adequate	Surplus	
11	35	30	35	0	30	55	15	0	6.1
12	15	61	24	0	15	57	28	0	6.6
21	20	49	25	6	16	45	33	6	6.1
22	34	45	21	0	32	49	19	0	6.4
30	9	31	57	3	11	31	54	4	6.3
40	20	35	42	3	18	31	50	1	6.5
51	27	44	27	2	27	38	31	4	6.4
52	2	34	64	0	2	33	64	1	6.8
60	17	26	55	2	17	28	52	3	6.0
70	11	30	55	4	11	27	57	5	6.6
81	2	21	75	2	2	23	71	4	6.0
82	0	11	81	8	0	2	90	8	1.5
90	0	2	75	23	0	5	46	49	4.5
96	13	30	57	0	13	45	42	0	6.2
97	21	31	25	23	3	14	57	26	5.1
State	20	37	40	3	18	40	37	5	6.1

### Texas Agricultural Districts

- 11 Northern High Plains
- 12 Southern High Plains
- 21 Northern Low Plains
- 22 Southern Low Plains
- 30 Cross Timbers
- 40 Blacklands
- 51 North East
- 52 South East
- 60 Trans-Pecos
- 70 Edwards Plateau
- 81 South Central
- 82 Coastal Bend
- 90 Upper Coast
- 96 South
- 97 Lower Valley

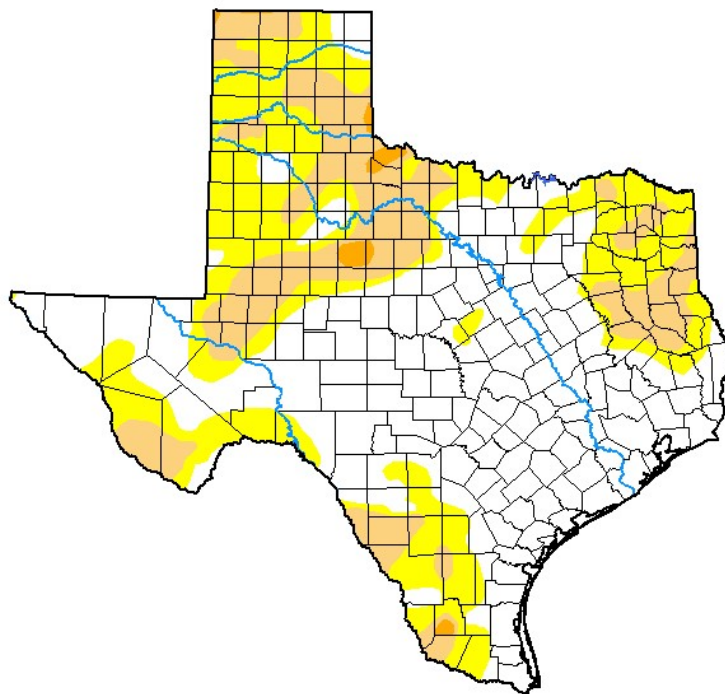


## Seven Day Observed Regional Precipitation, October 24, 2021.



Source: National Weather Service, [www.nws.noaa.gov](http://www.nws.noaa.gov)

## Drought Monitor, Valid October 19, 2021.



Drought Conditions (Percent Area)

	None	D0-D4	D1-D4	D2-D4	D3-D4	D4
<b>Current</b>	53.43	46.57	19.05	0.88	0.00	0.00
<b>Last Week</b> <i>10-12-2021</i>	46.74	53.26	14.58	0.53	0.00	0.00
<b>3 Months Ago</b> <i>07-20-2021</i>	92.29	7.71	3.46	0.00	0.00	0.00
<b>Start of Calendar Year</b> <i>12-29-2020</i>	8.80	91.20	81.11	50.33	30.09	13.03
<b>Start of Water Year</b> <i>09-28-2021</i>	45.57	54.43	7.26	0.27	0.00	0.00
<b>One Year Ago</b> <i>10-20-2020</i>	46.81	53.19	39.61	25.69	14.42	4.72

Intensity:

- None
- D0 Abnormally Dry
- D1 Moderate Drought
- D2 Severe Drought
- D3 Extreme Drought
- D4 Exceptional Drought

*The Drought Monitor focuses on broad-scale conditions. Local conditions may vary. For more information on the Drought Monitor, go to <https://droughtmonitor.unl.edu/About.aspx>*

Author:

Brad Pugh  
CPC/NOAA



[droughtmonitor.unl.edu](http://droughtmonitor.unl.edu)

Source: National Drought Mitigation Center, a partnership with USDA, U.S. Department of Commerce/NOAA, <http://droughtmonitor.unl.edu>