



Texas Crop Progress and Condition

Southern Plains Regional Field Office
Post Office Box 70 Austin, Texas 78767
(800) 626-3142 · FAX (855) 270-2725 · www.nass.usda.gov/tx

Issue: TX-CW4323

Weekly Summary for November 6 - November 12

Released: November 13, 2023

Parts of the state received rain ranging from trace amounts up to 3 inches last week with areas of the Upper Coast, the Coastal Bend, and South Texas receiving 6 inches. Drought conditions ranged from none to exceptional drought with areas in South Central Texas and South East Texas being the driest. There was an average of 5.1 days suitable for fieldwork.

Small Grains: Winter wheat planting continued last week. Cooler temperatures and moisture were beneficial for emerging wheat. One issue was reported in the Blacklands, Hessian flies remained a dominate concern with growers. Wheat planting was halted because of rainfall last week in the Blacklands and South Central Texas. Winter wheat planted reached 82 percent, down 10 points from the previous year. Winter wheat emerged reached 66 percent, down 8 points from the previous year.

Row Crops: Cotton bolls opening reached 95 percent for the state, down 5 points from the previous year. In the Edwards Plateau and South Central Texas, cotton harvest was ongoing. In the Plains, cotton harvest had almost finished. Cotton harvested reached 56 percent, down 4 points from the previous year. Soybean harvest reached 91 percent, down 6 points from the previous year. In the Edwards Plateau, peanut harvest was underway. Peanuts mature reached 95 percent, up 11 points from the previous year. Peanut harvest reached 66 percent, down 3 points from the previous year.

Fruit, Vegetable, and Specialty Crops: In the Lower Valley, citrus, vegetable and sugarcane harvest was halted because of rainfall. In the Edwards Plateau and the Cross Timbers, pecan harvest continued.

Livestock, Range and Pasture: Pasture and rangeland benefitted with rain and cooler weather favorable for winter forage emergence. Pasture and range condition was rated fair to poor. Livestock producers continued to provide supplemental feeding for all livestock across the state.

Crop Progress by Percent
For Week Ending November 12, 2023

Stage	Percentage of Acreage			
	Current Week	Previous Week	Previous Year	5 Year Average
Cotton				
Bolls Opening	95	92	100	98
Harvested	56	47	60	55
Peanuts				
Mature	95	91	84	76
Harvested	66	56	69	64
Soybeans				
Harvested	91	85	97	91
Winter Wheat				
Planted	82	78	92	86
Emerged	66	60	74	70

Crop Condition by Percent
For Week Ending November 12, 2023

Crop	Percent of Acreage					Index ¹	
	Excellent	Good	Fair	Poor	Very Poor	2023	2022
Cotton	1	9	24	28	38	33	30
Peanuts	2	35	55	8	0	30	62
Soybeans	7	28	37	23	5	61	35
Wheat	9	31	39	9	12	64	45
Range and Pasture	2	12	31	29	26	40	40

¹ The formula for the condition index is $I = (5V + 25P + 60F + 90G + 110E)/100$ where I = crop condition index and V, P, F, G, E = percentage of crop rated very poor, poor, fair, good, excellent.

Soil Moisture and Days Suitable by District
For Week Ending November 12, 2023

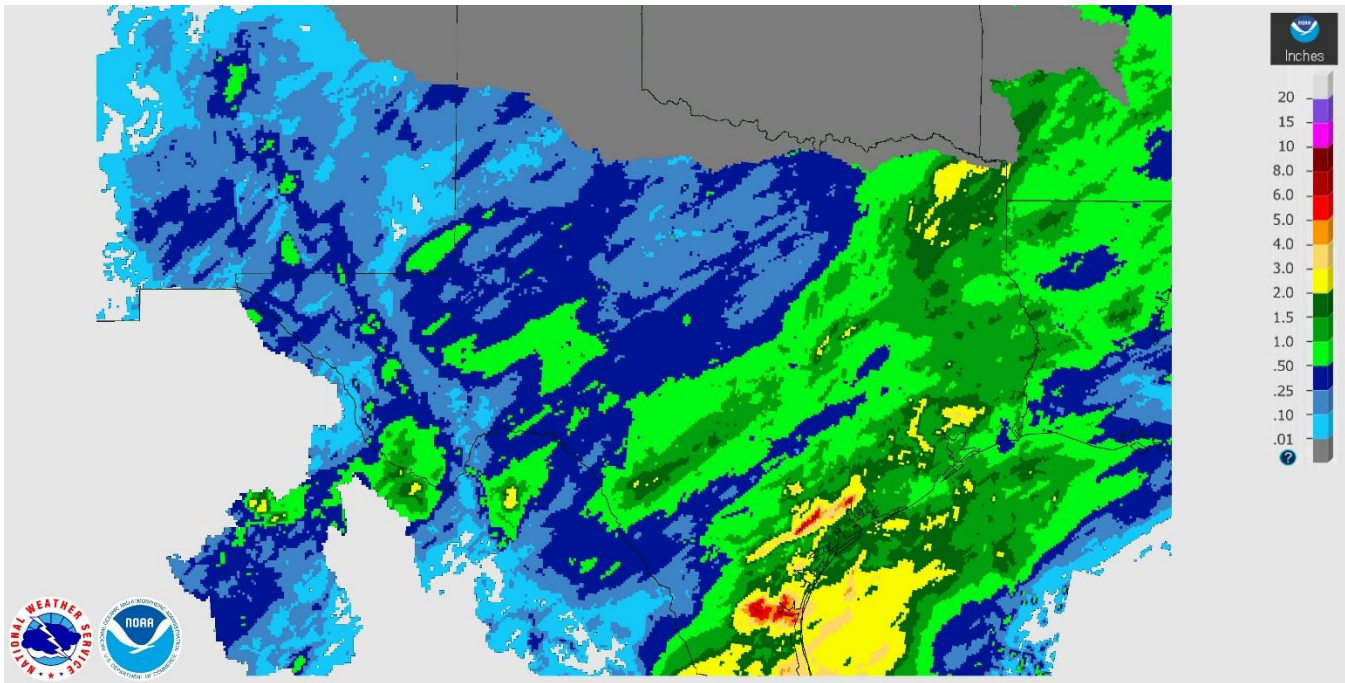
District	Subsoil Moisture Condition by District				Topsoil Moisture Condition by District				Days Suitable for Fieldwork
	Percentage of Acreage				Percentage of Acreage				
	Very Short	Short	Adequate	Surplus	Very Short	Short	Adequate	Surplus	
11	22	38	40	0	23	54	22	1	5.2
12	34	36	24	6	20	36	38	6	5.5
21	39	23	38	0	38	29	33	0	6.1
22	12	40	48	0	0	30	67	3	5.9
30	2	18	78	2	0	13	80	7	5.1
40	7	22	60	11	2	8	78	12	4.5
51	2	35	59	4	2	27	67	4	5.8
52	10	26	64	0	5	19	71	5	4.0
60	0	48	35	17	0	48	35	17	4.8
70	18	13	69	0	14	12	74	0	4.0
81	14	33	51	2	10	32	48	10	5.2
82	60	40	0	0	100	0	0	0	7.0
90	8	59	27	6	2	45	31	22	3.1
96	20	29	49	2	9	36	38	17	6.2
97	14	49	32	5	16	16	63	5	1.9
State	20	33	44	3	15	31	48	6	5.1

Texas Agricultural Districts

- 11 Northern High Plains
- 12 Southern High Plains
- 21 Northern Low Plains
- 22 Southern Low Plains
- 30 Cross Timbers
- 40 Blacklands
- 51 North East
- 52 South East
- 60 Trans-Pecos
- 70 Edwards Plateau
- 81 South Central
- 82 Coastal Bend
- 90 Upper Coast
- 96 South
- 97 Lower Valley

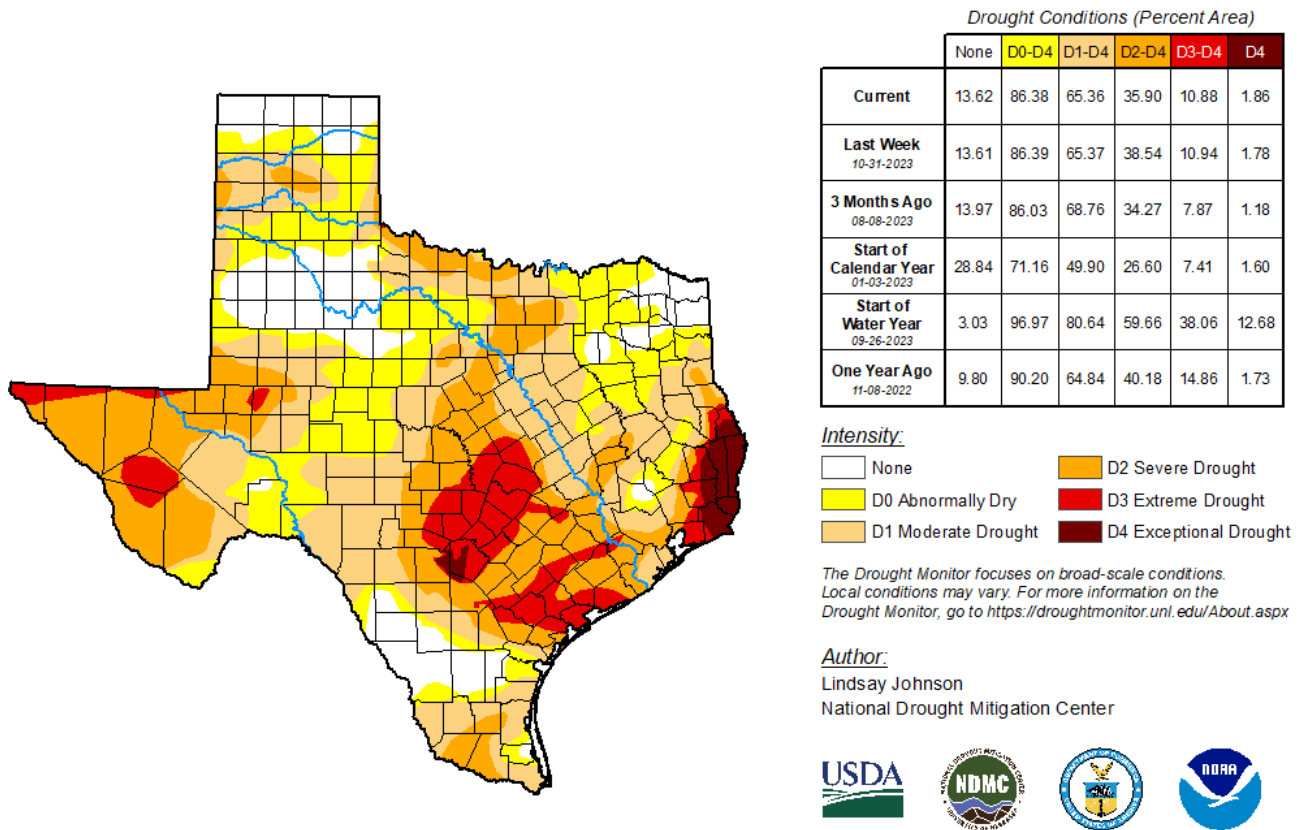


Seven Day Observed Regional Precipitation, November 12, 2023.



Source: National Weather Service, www.nws.noaa.gov

Drought Monitor, Map Released: November 9, 2023.



Source: National Drought Mitigation Center, a partnership with USDA, U.S. Department of Commerce/NOAA, <http://droughtmonitor.unl.edu>

