



Texas Crop Progress and Condition

Southern Plains Regional Field Office
Post Office Box 70 Austin, Texas 78767
(800) 626-3142 · FAX (855) 270-2725 · www.nass.usda.gov/tx

Issue: TX-CW4421

Weekly Summary for November 15-November 21

Released: November 22

Most of the state received from trace amounts to upwards of 3.0 inches of precipitation. Areas of the Lower Valley and South Texas received up to 4.0 inches. Areas of the Cross Timbers and the Trans-Pecos reported the first freeze of the year, while frost was reported in some areas of the Cross Timbers, the Blacklands, and North East Texas. There was an average of 6.5 days suitable for fieldwork.

Small Grains: Winter wheat was still in need of rain in most areas of the High and Low Plains. Planting of winter wheat resumed under adequate soil moisture conditions in areas of the Blacklands. Winter wheat planted reached 93 percent, up 2 points from the previous year and up 4 points from normal. Oats planted reached 95 percent, up 1 point from the previous year but unchanged from normal.

Row Crops: Cotton harvested reached 70 percent, down 3 points from the previous year but up 9 points from normal. Peanuts harvested reached 79 percent, down 1 point from the previous year and normal.

Fruit, Vegetable and Specialty Crops: Pecan harvest in the Edwards Plateau was in full swing and continued in areas of South Central Texas. Strawberry planting was complete and other fall vegetables were being planted in areas of the South. Citrus was getting closer to harvest in the Lower Valley as sugarcane harvest continued.

Livestock, Range and Pasture: Supplemental feeding continued in the Blacklands, South Texas, and the High Plains. Pastures and pond levels were reported as low in areas of the Cross Timbers and North East Texas, while pastures were in good shape in areas of the Edwards Plateau. Range and pasture condition was rated mostly fair to poor.

Crop Progress

Stage	Percent of Acreage			
	Current Week	Previous Week	Previous Year	5 Year Average
Cotton				
Harvested	70	60	73	61
Peanuts				
Mature	85	77	88	82
Harvested	79	68	80	80
Winter Wheat				
Planted	93	89	91	89
Emerged	75	71	76	77
Oats				
Planted	95	93	94	95
Emerged	84	77	79	81

(NA) Not available.

Crop Condition

Crop	Percent of Acreage					Index ¹	
	Excellent	Good	Fair	Poor	Very Poor	2021	2020
Cotton	15	43	37	4	1	78	47
Peanuts	18	58	23	1	0	86	70
Wheat	3	19	36	25	17	49	-
Oats	3	21	40	27	9	53	-
Range and Pasture	4	21	40	23	12	-	-

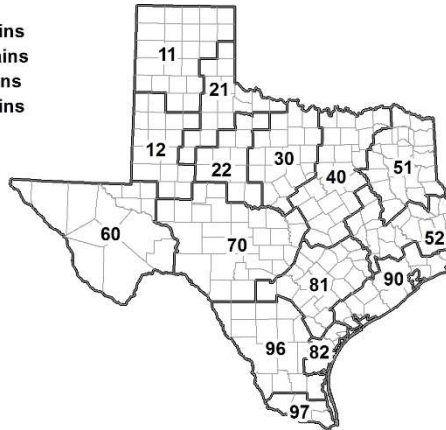
¹ The formula for the condition index is $I = (5V + 25P + 60F + 90G + 110E)/100$ where I = crop condition index and V, P, F, G, E = percentage of crop rated very poor, poor, fair, good, excellent.

Soil Moisture and Days Suitable by District

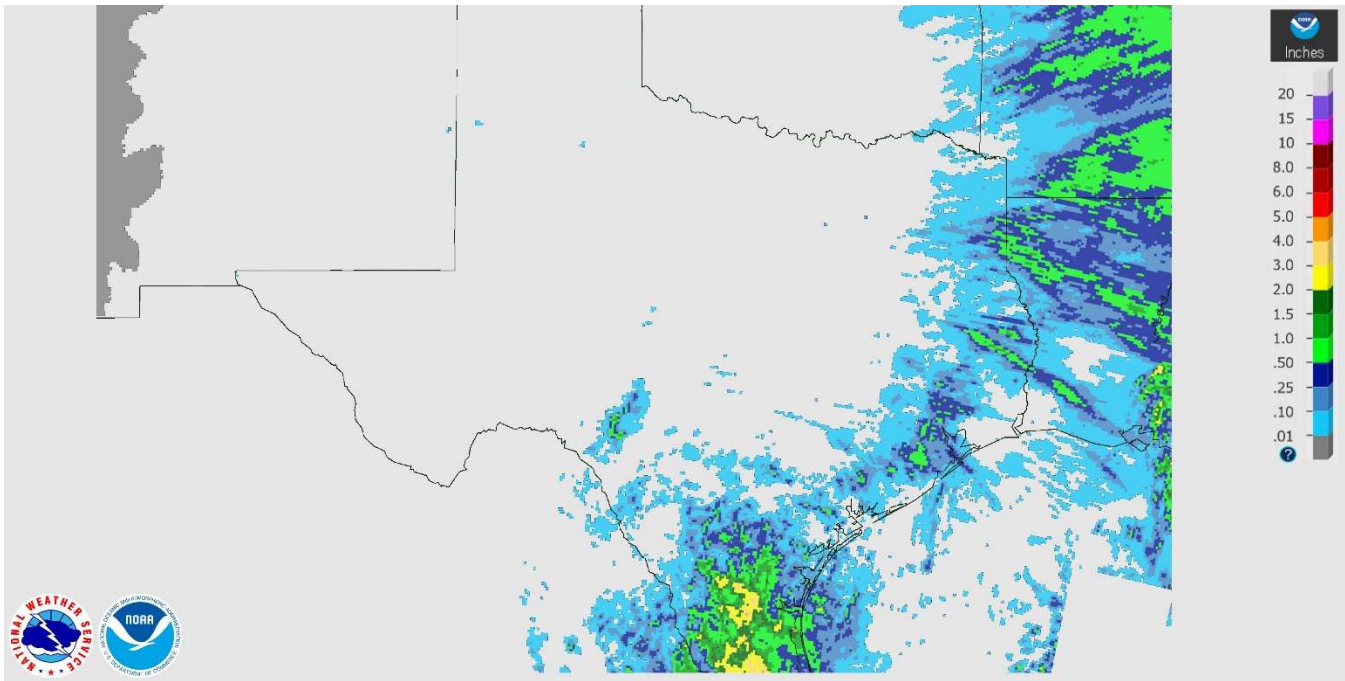
District	Topsoil Moisture Condition by District				Subsoil Moisture Condition by District				Days Suitable for Fieldwork
	Percentage of Acreage				Percentage of Acreage				
	Very Short	Short	Adequate	Surplus	Very Short	Short	Adequate	Surplus	
11	41	42	17	0	36	44	20	0	6.8
12	31	59	10	0	30	56	14	0	6.8
21	13	72	15	0	23	57	20	0	7.0
22	61	33	6	0	45	44	11	0	6.5
30	6	34	57	3	6	33	58	3	6.8
40	13	36	50	1	13	37	49	1	6.5
51	21	45	32	2	23	43	32	2	6.5
52	6	38	56	0	7	37	56	0	6.9
60	26	29	45	0	22	32	46	0	6.4
70	22	14	56	8	21	28	42	9	6.9
81	0	46	54	0	0	39	61	0	6.6
82	0	50	50	0	0	40	60	0	7.0
90	0	12	55	33	0	7	48	45	3.4
96	14	41	41	4	13	44	40	3	6.3
97	3	9	79	9	3	9	82	6	4.4
State	24	42	31	3	22	42	33	3	6.5

Texas Agricultural Districts

- 11 Northern High Plains
- 12 Southern High Plains
- 21 Northern Low Plains
- 22 Southern Low Plains
- 30 Cross Timbers
- 40 Blacklands
- 51 North East
- 52 South East
- 60 Trans-Pecos
- 70 Edwards Plateau
- 81 South Central
- 82 Coastal Bend
- 90 Upper Coast
- 96 South
- 97 Lower Valley

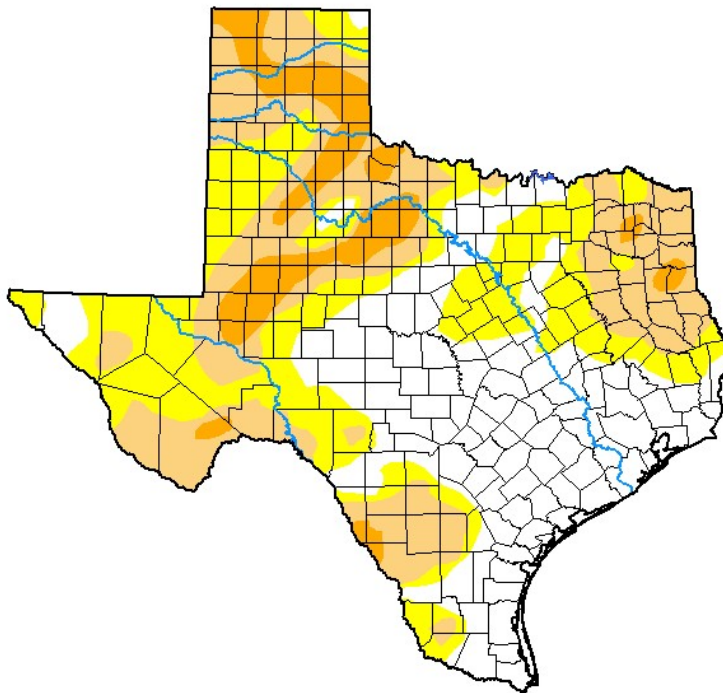


Seven Day Observed Regional Precipitation, November 21, 2021.



Source: National Weather Service, www.nws.noaa.gov

Drought Monitor, Valid November 16, 2021.



Drought Conditions (Percent Area)

	None	D0-D4	D1-D4	D2-D4	D3-D4	D4
Current	36.07	63.93	35.85	9.35	0.00	0.00
Last Week <i>11-09-2021</i>	38.58	61.42	32.22	5.62	0.00	0.00
3 Months Ago <i>08-17-2021</i>	91.79	8.21	1.17	0.00	0.00	0.00
Start of Calendar Year <i>12-29-2020</i>	8.80	91.20	81.11	50.33	30.09	13.03
Start of Water Year <i>09-28-2021</i>	45.57	54.43	7.26	0.27	0.00	0.00
One Year Ago <i>11-17-2020</i>	2.81	97.19	75.44	39.80	20.50	9.10

Intensity:

- None
- D0 Abnormally Dry
- D1 Moderate Drought
- D2 Severe Drought
- D3 Extreme Drought
- D4 Exceptional Drought

The Drought Monitor focuses on broad-scale conditions. Local conditions may vary. For more information on the Drought Monitor, go to <https://droughtmonitor.unl.edu/About.aspx>

Author:

Curtis Riganti
National Drought Mitigation Center



droughtmonitor.unl.edu

Source: National Drought Mitigation Center, a partnership with USDA, U.S. Department of Commerce/NOAA, <http://droughtmonitor.unl.edu>