



Texas Crop Progress and Condition

Southern Plains Regional Field Office
Post Office Box 70 Austin, Texas 78767
(800) 626-3142 · FAX (855) 270-2725 · www.nass.usda.gov/tx

Issue: TX-CW4523

Weekly Summary for November 20 - November 26

Released: November 27, 2023

Note: This is the final weekly Crop Progress and Condition report for the 2023 season.

Cooler temperatures returned to the state. Rainfall ranged from trace amounts to 2 inches with East Texas receiving the most rain. Drought conditions ranged from none to exceptional drought with areas in South Central district and South East Texas being the driest. There was an average of 5.9 days suitable for fieldwork.

Small Grains: Winter wheat planting was near completion in parts of the state. As weather conditions remained favorable, moisture was still needed to aid winter wheat emergence. Winter wheat planted reached 92 percent, down 6 points from the previous year. Winter wheat emerged reached 78 percent, down 6 points from the previous year.

Row Crops: In the High Plains, cotton harvest continued, while harvest was in full swing in the Southern Low Plains and the Edwards Plateau. Cotton harvest reached 74 percent, down 2 points from the previous year. In South Texas, peanut harvest was near completion. Peanut harvest reached 85 percent, down 1 point from the previous year.

Fruit, Vegetable, and Specialty Crops: In the Lower Valley, fall vegetable, citrus and sugarcane harvest continued. In the Cross Timbers and South Central districts, pecan harvest continued.

Livestock, Range and Pasture: Producers continued to increase supplementation as cooler weather sets in. Cattle were being turned out on winter wheat. Pasture and range conditions were rated poor to fair. Cool season grasses had greened up and provided additional winter forage for livestock.

Crop Progress by Percent
For Week Ending November 26, 2023

Stage	Percentage of Acreage			
	Current Week	Previous Week	Previous Year	5 Year Average
Cotton				
Harvested	74	68	76	73
Peanuts				
Harvested	85	75	86	84
Winter Wheat				
Planted	92	87	98	93
Emerged	78	73	84	80

Crop Condition by Percent
For Week Ending November 26, 2023

Crop	Percent of Acreage					Index ¹	
	Excellent	Good	Fair	Poor	Very Poor	2023	2022
Cotton	1	9	24	28	38	35	30
Peanuts	2	35	55	8	0	69	62
Wheat	11	35	35	11	9	68	56
Range and Pasture	2	12	28	31	27	39	44

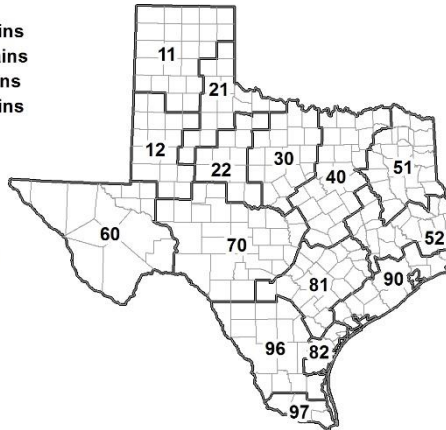
¹ The formula for the condition index is $I = (5V + 25P + 60F + 90G + 110E)/100$ where I = crop condition index and V, P, F, G, E = percentage of crop rated very poor, poor, fair, good, excellent.

Soil Moisture and Days Suitable by District
For Week Ending November 26, 2023

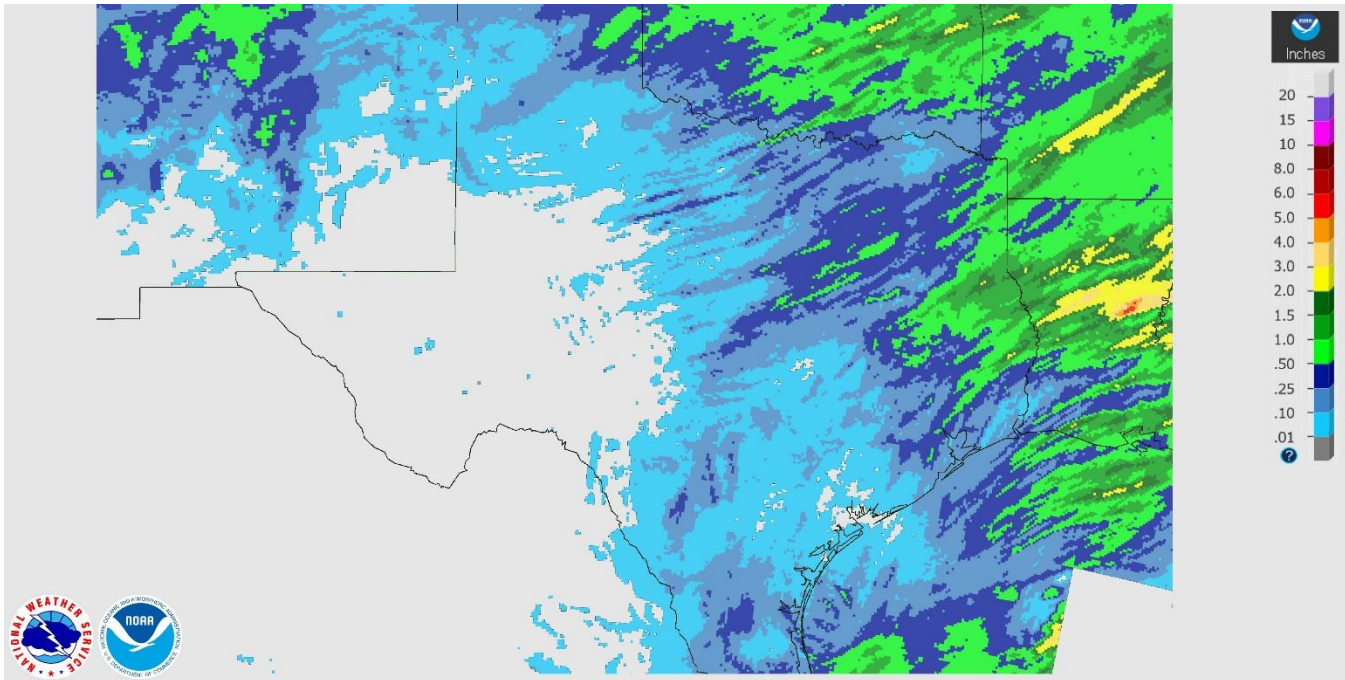
District	Subsoil Moisture Condition by District				Topsoil Moisture Condition by District				Days Suitable for Fieldwork
	Percentage of Acreage				Percentage of Acreage				
	Very Short	Short	Adequate	Surplus	Very Short	Short	Adequate	Surplus	
11	22	44	34	0	28	41	30	1	4.7
12	15	85	0	0	0	77	23	0	7.0
21	33	37	30	0	30	46	24	0	6.2
22	9	47	44	0	8	38	54	0	6.5
30	4	41	55	0	4	42	50	4	6.3
40	19	29	50	2	17	21	58	4	5.8
51	2	34	64	0	1	33	66	0	6.2
52	12	42	43	3	6	21	67	6	4.0
60	13	27	60	0	14	26	60	0	6.4
70	5	16	79	0	2	15	78	5	6.6
81	9	37	53	1	8	35	57	0	5.7
82	0	3	72	25	0	8	75	17	4.5
90	5	52	38	5	0	47	43	10	6.4
96	13	36	48	3	5	26	66	3	6.2
97	10	27	55	8	11	16	68	5	4.4
State	15	45	38	2	12	42	44	2	5.9

Texas Agricultural Districts

- 11 Northern High Plains
- 12 Southern High Plains
- 21 Northern Low Plains
- 22 Southern Low Plains
- 30 Cross Timbers
- 40 Blacklands
- 51 North East
- 52 South East
- 60 Trans-Pecos
- 70 Edwards Plateau
- 81 South Central
- 82 Coastal Bend
- 90 Upper Coast
- 96 South
- 97 Lower Valley

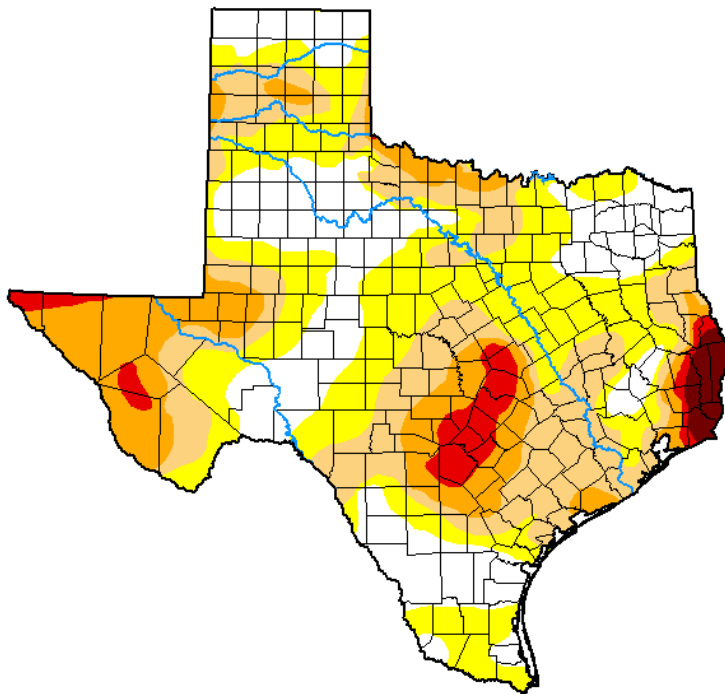


Seven Day Observed Regional Precipitation, November 26, 2023.



Source: National Weather Service, www.nws.noaa.gov

Drought Monitor, Map Released: November 22, 2023.



Drought Conditions (Percent Area)

	None	D0-D4	D1-D4	D2-D4	D3-D4	D4
Current	25.27	74.73	44.46	20.73	5.71	1.51
Last Week 11-14-2023	20.89	79.11	54.12	28.55	7.69	1.73
3 Months Ago 08-22-2023	4.13	95.87	78.71	62.10	33.99	11.67
Start of Calendar Year 01-03-2023	28.84	71.16	49.90	26.60	7.41	1.60
Start of Water Year 09-26-2022	3.03	96.97	80.64	59.66	38.06	12.68
One Year Ago 11-22-2022	13.07	86.93	62.68	38.09	14.70	2.36

Intensity:

- None
- D0 Abnormally Dry
- D1 Moderate Drought
- D2 Severe Drought
- D3 Extreme Drought
- D4 Exceptional Drought

The Drought Monitor focuses on broad-scale conditions. Local conditions may vary. For more information on the Drought Monitor, go to <https://droughtmonitor.unl.edu/About.aspx>

Author:

Brad Rippey
U.S. Department of Agriculture



droughtmonitor.unl.edu

Source: National Drought Mitigation Center, a partnership with USDA, U.S. Department of Commerce/NOAA, <http://droughtmonitor.unl.edu>