



# Cattle on Feed

Southern Plains Regional Field Office · Post Office Box 70, Austin, Texas 78767 · 800-626-3142 · [www.nass.usda.gov](http://www.nass.usda.gov)

Cooperating with the Oklahoma Department of Agriculture, Food and Forestry and Texas Department of Agriculture

July 23, 2021

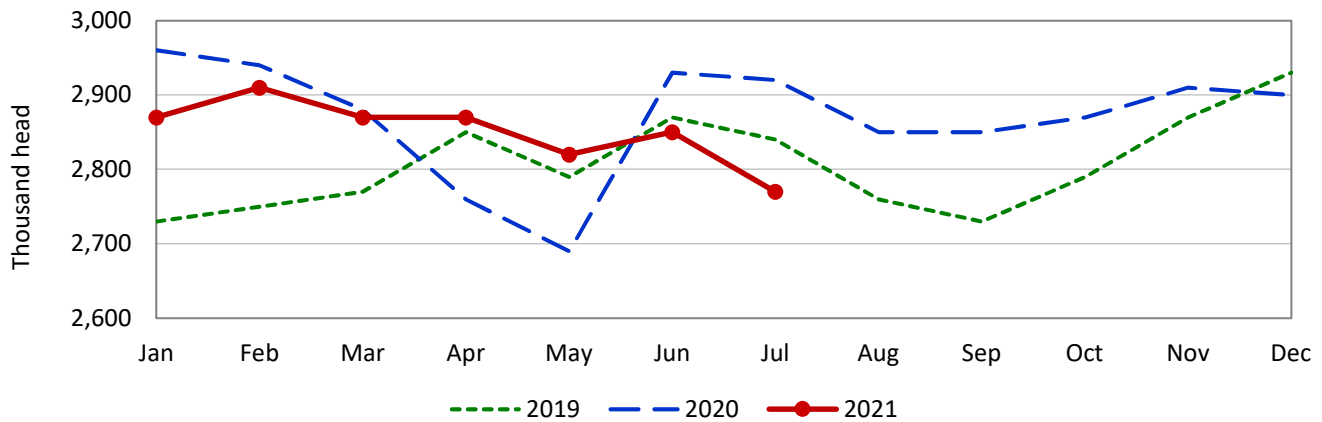
Contact: Kim DaPra or Carol Pittman

This report contains results from the July 2021 Cattle on Feed Survey collected during the first two weeks of July. Data provided by Oklahoma and Texas producers are the foundation of the estimates made for the Southern Plains region. We would like to thank all producers who responded to the survey. Results from the next monthly survey will be made available on August 20, 2021.

Cattle and calves on feed for slaughter market in **Texas** feedlots with capacity of 1,000 head or more totaled 2.77 million head on July 1, 2021, down 5 percent from a year ago. Producers placed 380 thousand head in commercial feedlots during June, down 14 percent from a year ago. Texas commercial feeders marketed 450 thousand head during June, up 2 percent from 2020.

On July 1, there were 2.45 million head of cattle and calves on feed in the Northern High Plains, 89 percent of the state's total. The number on feed across the area was down 5 percent from last year and down 3 percent from the June 1 total. June placements in the Northern High Plains totaled 336 thousand head, down 23 percent from the May total. Marketings were up 6 percent from last month at 410 thousand head.

## Texas Cattle on Feed Inventory

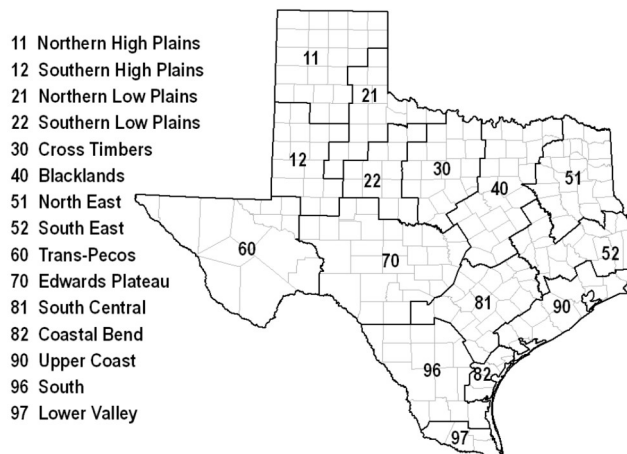


## Texas Cattle and Calves on Feed in 1,000+ Capacity Feedlots, by District

Cattle and Calves	District 11	District 12	District 21	District 70	District 81	District 96	Other districts	State total
	1,000 head	1,000 head	1,000 head	1,000 head	1,000 head	1,000 head	1,000 head	1,000 head
On feed June 1, 2021 <sup>1</sup>	2,537	151	49	9	28	39	37	2,850
Placed on feed during June	336	25	4	1	4	8	2	380
Fed cattle marketed during June	410	20	4	1	4	7	4	450
Other disappearance during June <sup>2</sup>	9	1	0	0	0	0	0	10
On feed July 1, 2021 <sup>1</sup>	2,454	155	49	9	28	40	35	2,770

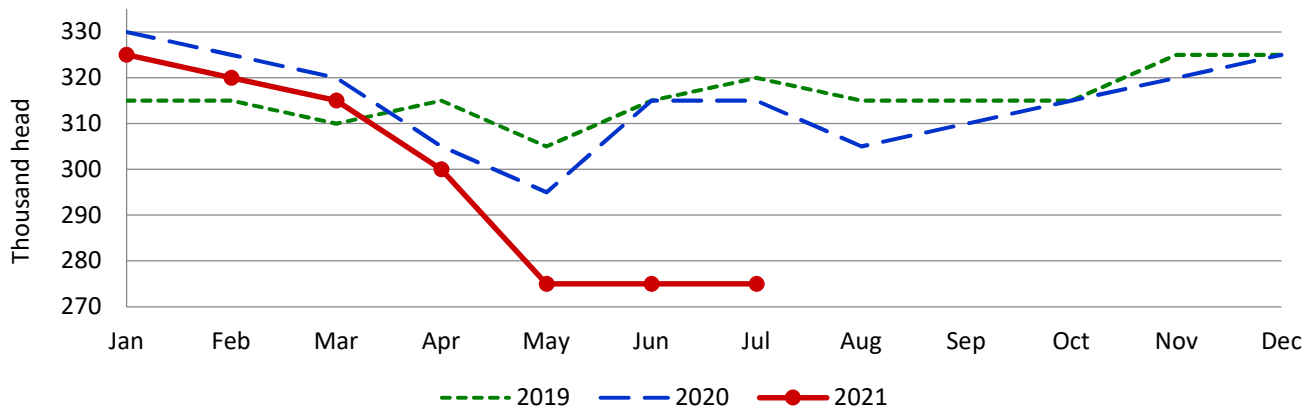
<sup>1</sup> Cattle and calves on feed are animals for slaughter market being fed a ration of grain or other concentrates and are expected to produce a carcass that will grade select or better.

<sup>2</sup> Included death losses, movement from feedlots to pasture and shipments to other feedlots for further feeding.



Cattle and calves on feed for slaughter market in **Oklahoma** feedlots with capacity of 1,000 head or more totaled 275 thousand head on July 1, 2021, down 13 percent from a year ago. Producers placed 54 thousand head in commercial feedlots during June, down 2 percent from a year ago. Oklahoma commercial feeders marketed 53 thousand head during June, down 2 percent from 2020. Other disappearance during June totaled 1 thousand head, unchanged from a year ago.

### Oklahoma Cattle on Feed Inventory



### Cattle and Calves: Placements, Marketings, Other Disappearance and Inventory in 1,000+ Capacity Feedlot

State	Cattle and Calves										
	On feed June 1		Placed on feed during June		Marketed during June		Other Disappearance during June		On feed July 1		
	2020	2021	2020	2021	2020	2021	2020	2021	2020	2021	
	<i>1,000 head</i>	<i>1,000 head</i>	<i>1,000 head</i>	<i>1,000 head</i>	<i>1,000 head</i>	<i>1,000 head</i>	<i>1,000 head</i>	<i>1,000 head</i>	<i>1,000 head</i>	<i>1,000 head</i>	<i>1,000 head</i>
Arizona.....	271	279	22	22	19	25	1	1	273	275	
California.....	545	545	60	62	53	60	7	7	545	540	
Colorado.....	1,010	1,080	175	130	160	145	5	5	1,020	1,060	
Idaho.....	280	290	38	36	37	44	1	2	280	280	
Iowa.....	640	620	58	44	66	62	2	2	630	600	
Kansas.....	2,430	2,520	425	430	455	490	10	10	2,390	2,450	
Minnesota.....	130	105	14	12	18	16	1	1	125	100	
Nebraska.....	2,410	2,440	420	415	555	555	15	10	2,260	2,290	
<b>Oklahoma.....</b>	<b>315</b>	<b>275</b>	<b>55</b>	<b>54</b>	<b>54</b>	<b>53</b>	<b>1</b>	<b>1</b>	<b>315</b>	<b>275</b>	
South Dakota.....	200	220	23	20	32	36	6	4	185	200	
<b>Texas.....</b>	<b>2,930</b>	<b>2,850</b>	<b>440</b>	<b>380</b>	<b>440</b>	<b>450</b>	<b>10</b>	<b>10</b>	<b>2,920</b>	<b>2,770</b>	
Washington.....	230	200	26	24	30	32	1	2	225	190	
Other States.....	280	275	42	41	50	54	2	2	270	260	
United States.....	11,671	11,699	1,798	1,670	1,969	2,022	62	57	11,438	11,290	

### Cattle on Feed: Number Placed on Feed by Weight Group, 1,000+ Capacity Feedlots<sup>1</sup>

State	During June 2020					
	Under 600 lbs	600-699 lbs	700-799 lbs	800-899 lbs	900+ lbs <sup>2</sup>	Total
	<i>1,000 head</i>	<i>1,000 head</i>	<i>1,000 head</i>	<i>1,000 head</i>	<i>1,000 head</i>	<i>1,000 head</i>
Colorado.....	45	35	30	35	30	175
Kansas.....	60	80	110	115	60	425
Nebraska.....	40	55	75	130	120	420
<b>Texas.....</b>	<b>185</b>	<b>90</b>	<b>90</b>	<b>55</b>	<b>20</b>	<b>440</b>
Other States.....	100	50	55	78	55	338
United States.....	430	310	360	413	285	1,798
State	During June 2021					
	Under 600 lbs	600-699 lbs	700-799 lbs	800-899 lbs	900+ lbs <sup>2</sup>	Total
	<i>1,000 head</i>	<i>1,000 head</i>	<i>1,000 head</i>	<i>1,000 head</i>	<i>1,000 head</i>	<i>1,000 head</i>
Colorado.....	30	25	25	30	20	130
Kansas.....	55	70	125	115	65	430
Nebraska.....	30	50	85	130	120	415
<b>Texas.....</b>	<b>145</b>	<b>70</b>	<b>85</b>	<b>55</b>	<b>25</b>	<b>380</b>
Other States.....	85	45	55	75	55	315
United States.....	345	260	375	405	285	1,670

<sup>1</sup> Oklahoma is included in *Other States*.

<sup>2</sup> For the U.S., the 900+ category represents the sum of 900-999 pound and 1,000+ pound weight groups.