



United States Department of Agriculture  
National Agricultural Statistics Service



# Slaughter

Data Relating to November, 2021

Southern Plains Regional Field Office · Post Office Box 70, Austin, Texas 78767 · 800-626-3142 · [www.nass.usda.gov](http://www.nass.usda.gov)  
Cooperating with the Oklahoma Department of Agriculture, Food and Forestry and Texas Department of Agriculture

## U.S. Commercial Red Meat Production Up 2 Percent

Thank you to all those who respond to the monthly slaughter report. Without your participation we could not provide you with the timely data that is necessary in today's fast moving economy. This report is a summary of slaughter reports for Oklahoma, and Texas, which together comprise the Southern Plains region. Additionally, this report includes a summary of national data.

### Commercial Red Meat Production, November 2020 and 2021

State	November 2020	October 2021	November 2021	November 2021 as % of 2020
	<i>million pounds</i>	<i>million pounds</i>	<i>million pounds</i>	<i>percent</i>
Oklahoma	112.6	108.9	107.2	95
Texas	378.2	395.8	399.7	106
United States	4,689.1	4,754.9	4,804.7	102

### Commercial Cattle Slaughter, November 2020 and 2021

State	Number Slaughtered		Total Live Weight		Average Live Weight	
	2020	2021	2020	2021	2020	2021
	<i>head</i>	<i>head</i>	<i>pounds</i>	<i>pounds</i>	<i>pounds</i>	<i>pounds</i>
Oklahoma	4,000	5,800	4,636,000	6,566,000	1,161	1,129
Texas	462,600	492,600	612,508,000	654,041,000	1,328	1,331
United States	2,707,900	2,858,300	3,748,826,000	3,943,066,000	1,387	1,382

### Commercial Hog Slaughter, November 2020 and 2021

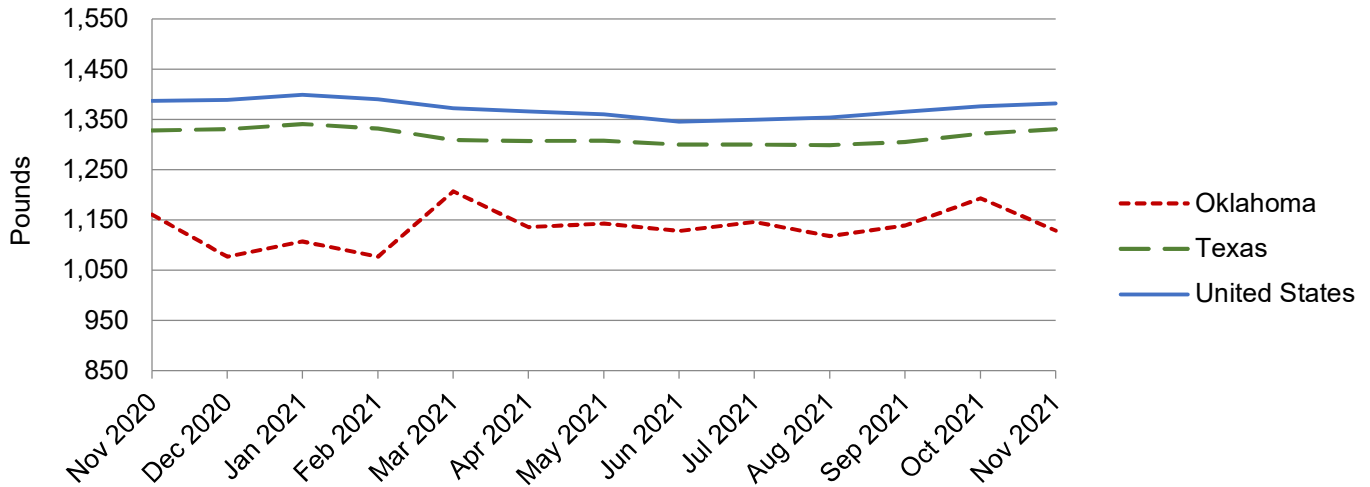
State	Number Slaughtered		Total Live Weight		Average Live Weight	
	2020	2021	2020	2021	2020	2021
	<i>head</i>	<i>head</i>	<i>pounds</i>	<i>pounds</i>	<i>pounds</i>	<i>pounds</i>
Oklahoma	489,600	475,300	145,252,000	138,289,000	297	291
Texas	26,000	25,000	6,542,000	6,083,000	252	243
United States	11,018,100	11,136,700	3,233,126,000	3,237,246,000	294	291

### Commercial Sheep and Lamb Slaughter, November 2020 and 2021

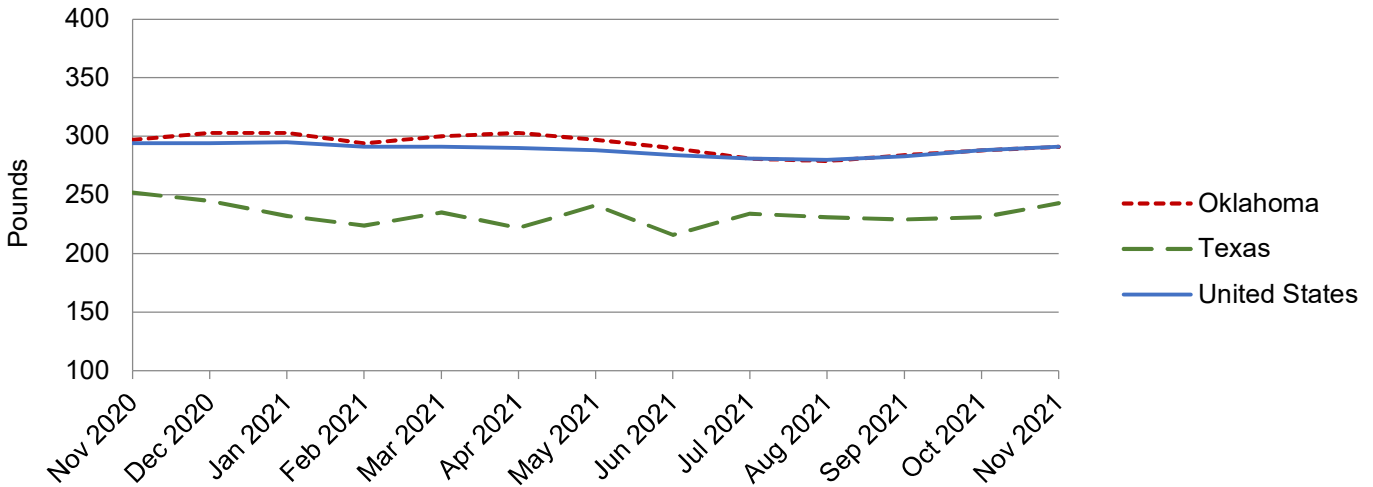
State	Number Slaughtered		Total Live Weight		Average Live Weight	
	2020	2021	2020	2021	2020	2021
	<i>head</i>	<i>head</i>	<i>pounds</i>	<i>pounds</i>	<i>pounds</i>	<i>pounds</i>
Oklahoma	1,200	(D)	112,000	(D)	96	(D)
Texas	19,600	22,100	1,622,000	2,365,000	83	107
United States	181,300	195,100	21,410,000	23,863,000	118	122

(D) Withheld to avoid disclosing data for individual operations.

### Cattle: Live Weight per Head, Southern Plains and U.S., 2020-2021



### Hogs: Live Weight per Head, Southern Plains and U.S., 2020-2021



NASS provides accurate, timely, useful and objective statistics in service to U.S. agriculture. In order to view the full national report, please visit the following website: [www.nass.usda.gov/Publications/](http://www.nass.usda.gov/Publications/).