



Crop Progress and Condition

USDA, NASS, Virginia Field Office
Herman Ellison, State Statistician
601 W Broadway, Rm 645
Louisville, KY 40202
(502) 907-3250 or 1-800-928-5277
Homepage: <http://www.nass.usda.gov/va>

In Cooperation with:
U.S. Dept. of Commerce - NOAA
Virginia Tech
Virginia State University
Virginia Cooperative Extension Service
Virginia Department of Agriculture and Consumer Services

Released: April 18, 2022

Issue: 06-22

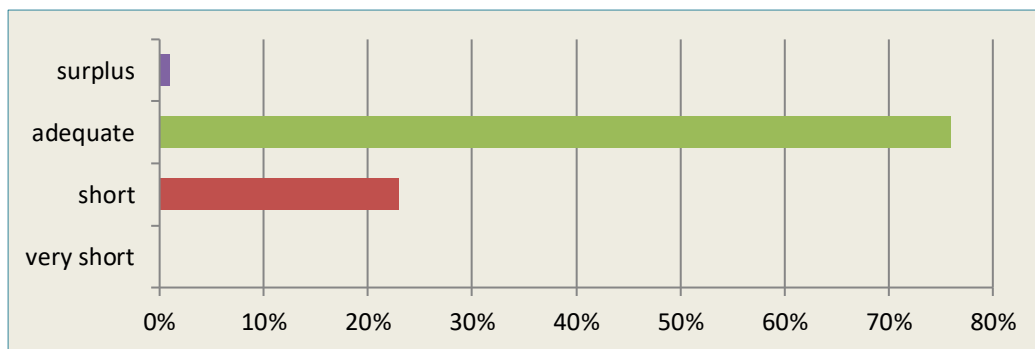
Agricultural News: Days suitable for fieldwork were 6.1. Weather conditions were warmer and drier. High average temperatures were mostly in the upper 70s, and low average temperatures were mostly in the lower 50s. There are abnormally dry and moderate drought conditions in the State. Farming activities for the week included planting corn and applying fertilizers to small grains and hay.

SOIL MOISTURE for week ending 04/17/22

	Very Short	Short	Adequate	Surplus
	%	%	%	%
Topsoil	-	23	76	1
Subsoil	-	20	76	4

- Represents zero.

TOPSOIL MOISTURE for week ending 04/17/22



CROP CONDITIONS for week ending 04/17/22

Crop	Very Poor	Poor	Fair	Good	Excellent
	%	%	%	%	%
Barley	-	-	23	73	4
Hay, Alfalfa	-	1	34	63	2
Hay, Other	1	3	40	43	13
Winter Wheat	1	1	22	69	7
Pasture	2	17	37	35	9

- Represents zero.

CROP PROGRESS for the week ending 4/17/22

Crop Stage	This Week	Last Week	Last Year	5-Yr Avg
	%	%	%	%
Corn planted	27	11	26	21
Corn emerged	2	-	-	-
Cotton planted	2	-	1	1
Winter Wheat headed	12	-	6	10

- Represents data not available.

Weather Summary- For the week ending April 17, 2022

City	Temperature				Precipitation				
	Avg. high	Avg. low	Avg. mean	Avg. dep. from normal *	Last Week	Since Mar. 1	Mar. 1 dep. from normal *	Jan. 1, 2022 to date	Jan. 1, 2022 dep. from normal *
Lynchburg	78.0	50.1	64.1	+8.3	0.00	4.99	-0.7	12.06	+0.0
Norfolk	73.9	52.3	63.1	+3.4	0.41	6.01	+0.5	13.10	+1.3
Richmond	77.4	51.3	64.4	+6.3	0.17	4.26	-1.5	10.25	-1.3
Roanoke	76.1	50.9	63.5	+5.9	0.01	4.20	-1.2	10.70	-0.8
Wash/Dulles	74.4	45.6	60.0	+5.4	0.01	3.60	-1.8	9.76	-1.2

*Normals value based on 1991-2020 normals data. Source: NOAA Southeast Regional Climate Center <https://www.sercc.com/>.