



Telephone: 1-800-535-7088
Email: nass-wv@nass.usda.gov



National Agricultural
Statistics Service
West Virginia Field Office

in cooperation with

West Virginia
Department of Agriculture

Released: June 2021

Volume 34, Number 6

In This Issue

- RED MEAT PRODUCTION**
- CATTLE ON FEED**
- POULTRY SLAUGHTER**
- CHICKENS AND EGGS**
- QUARTERLY HOGS AND PIGS**
- MAPLE SYRUP**
- COLD STORAGE**

Red Meat Production

Charleston, West Virginia - Commercial red meat production during May 2021 totaled 600,000 pounds. This was down 56 percent from May 2020. Commercial red meat production is the carcass weight after slaughter including beef, veal, pork, lamb and mutton. Individual commodity production is total live weight of commercial slaughter.

Commercial cattle slaughter totaled 824,000 pounds live weight, down 51 percent from May 2020. Cattle slaughter totaled 700 head, down 700 head from the previous year. The average live weight was up 6 pounds from the previous year, at 1,191 pounds.

Commercial calf slaughter was not published to avoid disclosing individual operations.

Commercial hog slaughter totaled 90,000 pounds live weight, down 83 percent from last year. Hog slaughter totaled 300 head, down 1,500 head from the previous year. The average live weight was up 10 pounds from the previous year, at 310 pounds.

Commercial sheep and lamb slaughter was not published to avoid disclosing individual operations.

United States - Commercial red meat production for the United States totaled 4.30 billion pounds in May, up 14 percent from the 3.76 billion pounds produced in May 2020.

Beef production, at 2.21 billion pounds, was 19 percent above the previous year. Cattle slaughter totaled 2.70 million head, up 18 percent from May 2020. The average live weight was down 7 pounds from the previous year, at 1,360 pounds.

Veal production totaled 3.7 million pounds, 29 percent below May a year ago. Calf slaughter totaled 25,500 head, down 21 percent from May 2020. The average live weight was down 26 pounds from last year, at 248 pounds.

Pork production totaled 2.07 billion pounds, up 10 percent from the previous year. Hog slaughter totaled 9.65 million head, up 12 percent from May 2020. The average live weight was down 6 pounds from the previous year, at 288 pounds.

Lamb and mutton production, at 11.0 million pounds, was down 13 percent from May 2020. Sheep slaughter totaled 181,300 head, 7 percent below last year. The average live weight was 121 pounds, down 8 pounds from May a year ago.

January to May 2021 commercial red meat production was 23.2 billion pounds, up 5 percent from 2020. Accumulated beef production was up 8 percent from last year, veal was down 19 percent, pork was up 3 percent from last year, and lamb and mutton production was up 2 percent.

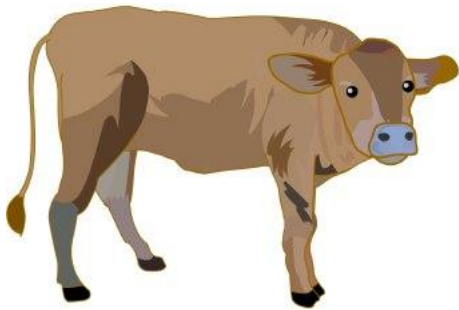
May 2020 contained 21 weekdays (including 1 holiday) and 5 Saturdays. May 2021 contained 21 weekdays (including 1 holiday) and 5 Saturdays.

Note: Percent changes are based on unrounded data.

Cattle On Feed

United States - Cattle and calves on feed for the slaughter market in the United States for feedlots with capacity of 1,000 or more head totaled 11.7 million

head on June 1, 2021. The inventory was slightly above June 1, 2020. This is the second highest June 1 inventory since the series began in 1996.



Placements in feedlots during May totaled 1.91 million head, 7 percent below 2020. Net placements were 1.84 million head. During May, placements of cattle and calves weighing less than 600 pounds were 355,000 head, 600-699 pounds were 255,000 head, 700-799 pounds were 470,000 head, 800-899 pounds were 501,000 head, 900-999 pounds were 235,000 head, and 1,000 pounds and greater were 95,000 head.

Marketings of fed cattle during May totaled 1.87 million head, 23 percent above 2020.

Other disappearance totaled 67,000 head during May, 2 percent above 2020.

Poultry Slaughter

United States - Poultry certified wholesome during May 2021 (ready-to-cook weight) totaled 4.12 billion pounds, up 2 percent from the amount certified in May 2020. The April 2021 revised certified total at 4.21 billion pounds, was up 3 percent from April 2020. The April revision represented an increase of 217,000 pounds from last month's preliminary pounds certified.

The preliminary total live weight of all federally inspected poultry during May 2021 was 5.42 billion pounds, up 2 percent from 5.34 billion pounds a year ago. Young chickens inspected totaled 4.77 billion pounds, up 1 percent from May 2020. Mature chickens, at 65.6 million pounds, were up 3 percent from the previous year. Turkey inspections totaled 565 million pounds, up 6 percent from a year ago.

Ducks totaled 13.2 million pounds, up 16 percent from last year.

Young chickens slaughtered during May 2021 averaged 6.46 pounds per bird, up slightly from May 2020. The average live weight of mature chickens was 6.82 pounds per bird, down slightly from a year ago. Turkeys slaughtered during May 2021 averaged 32.7 pounds per bird, up 1 percent from May 2020.

Ante-mortem condemnations during May 2021 totaled 11.2 million pounds. Condemnations were 0.21 percent of the live weight inspected, as compared with 0.21 percent a year earlier. Post-mortem condemnations, at 26.1 million pounds, were 0.63 percent of quantities inspected, as compared with 0.75 percent a year earlier.

Chickens And Eggs

United States - Egg production totaled 9.38 billion during May 2021, up 3 percent from last year. Production included 8.07 billion table eggs, and 1.31 billion hatching eggs, of which 1.23 billion were broiler-type and 79.9 million were egg-type. The average number of layers during May 2021 totaled 385 million, down slightly from last year. May egg production per 100 layers was 2,435 eggs, up 3 percent from May 2020.

Total layers in the United States on June 1, 2021 totaled 383 million, down 1 percent from last year. The 383 million layers consisted of 316 million layers producing table or market type eggs, 63.9 million layers producing broiler-type hatching eggs, and 3.20 million layers producing egg-type hatching eggs. Rate of lay per day on June 1, 2021, averaged 78.5 eggs per 100 layers, up 4 percent from June 1, 2020.

Egg-type chicks hatched during May 2021 totaled 57.3 million, up 9 percent from May 2020. Eggs in incubators totaled 51.3 million on June 1, 2021, up 2 percent from a year ago.

Domestic placements of **egg-type pullet chicks** for future hatchery supply flocks by leading breeders totaled 306 thousand during May 2021, up 31 percent from May 2020.

Broiler-type chicks hatched during May 2021 totaled 851 million, up 5 percent from May 2020.

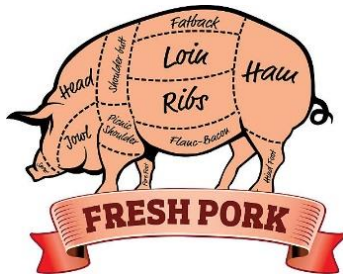
Eggs in incubators totaled 720 million on June 1, 2021, up 3 percent from a year ago.

Leading breeders placed 8.71 million **broiler-type pullet chicks** for future domestic hatchery supply flocks during May 2021, up 6 percent from May 2020.

Quarterly Hogs And Pigs

United States - Inventory of all hogs and pigs on June 1, 2021 was 75.7 million head. This was down 2 percent from June 1, 2020, but up 1 percent from March 1, 2021.

Breeding inventory, at 6.23 million head, was down 2 percent from last year, but up slightly from the previous quarter.



Market hog inventory, at 69.4 million head, was down 2 percent from last year, but up 1 percent from last quarter.

The March - May 2021 pig crop, at 33.6 million head, was down 3 percent from 2020. Sows farrowing during this period totaled 3.07 million head, down 3 percent from 2020. The sows farrowed during this quarter represented 49 percent of the breeding herd. The average pigs saved per litter was 10.95 for the March-May period, compared to 11.00 last year.

Maple Syrup

Charleston, West Virginia - Maple syrup production totaled 13,000 gallons in 2021, down 3,000 gallons from 16,000 gallons produced in 2020. **Number of taps** was 77,000, up 2,000 taps from 75,000 taps in 2020. **Yield per tap** was 0.169 gallon, down from the 2020 yield per tap of 0.213 gallon. On average, the **maple syrup season** opened on February 13, 2021 and closed on March 16, 2021. The average season length was 31 days. The first date sap was collected in West Virginia was January 12, 2021. The last date for sap collection was April 6, 2021.

Average price per gallon was \$30.20 in 2020, 27 percent below 2019. Bulk prices in 2020 were \$1.90 per pound, down from \$2.10 per pound in 2019, and \$21.00 per gallon, up from \$20.00 per gallon the previous year. **Percent of sales by type** in 2020 was 11 percent retail, down from 26 percent the previous year; 6 percent wholesale, down from 8 percent in 2019; and 83 percent bulk, up from 66 percent in 2019.

United States - Maple syrup production totaled 3.42 million gallons, down 17 percent from the previous season. The number of taps totaled 13.3 million, up 2 percent from the 2020 total. Yield per tap was 0.257 gallon, down 0.057 gallon from the previous season.

The earliest sap flow reported was January 1 in New York. The latest sap flow reported to open the season was February 20 in Wisconsin. On average, the season lasted 27 days, compared with 34 days in 2020. The 2020 United States average price per gallon was \$32.00, up \$1.00 from 2019. Value of production, at \$132 million for 2020, was up 2 percent from the 2019 season.

West Virginia Maple Syrup Price by Type of Sale and Size of Container - 2019 and 2020

	Gallon		½ Gallon		Quart		Pint		½ Pint	
	2019	2020	2019	2020	2019	2020	2019	2020	2019	2020
	(Dollars)									
Retail	43.00	50.00	28.20	30.40	15.30	16.80	11.10	10.00	6.20	8.00
Wholesale	45.80	42.90	22.00	22.10	12.30	13.10	7.20	7.70	4.60	4.60

Cold Storage

United States - Total natural cheese stocks in refrigerated warehouses on May 31, 2021 were up 1 percent from the previous month and up 1 percent from May 31, 2020.

Butter stocks were up 4 percent from last month and up 7 percent from a year ago.

Total frozen poultry supplies on May 31, 2021 were up 3 percent from the previous month, but down 12 percent from a year ago. Total stocks of chicken were up 1 percent from the previous month, but down 15 percent from last year. Total pounds of turkey in freezers were up 9 percent from last month, but down 6 percent from May 31, 2020.

Total frozen fruit stocks were down 1 percent from last month and down 23 percent from a year ago.

Total frozen vegetable stocks were down 8 percent from last month, but up 1 percent from a year ago.

Total red meat supplies in freezers were down 4 percent from the previous month and down 3 percent from last year. Total pounds of beef in freezers were down 8 percent from the previous month and down 1 percent from last year. Frozen pork supplies were up 1 percent from the previous month, but down 1 percent from last year. Stocks of pork bellies were up 3 percent from last month, but down 40 percent from last year.

Next Issue
Red Meat Production
Grain Stocks
Crop Acreage

KENT LEONHARDT, COMMISSIONER
CHARMAINE WILSON, STATE STATISTICIAN

United States Department of Agriculture
National Agricultural Statistics Service
West Virginia Department of Agriculture
1900 Kanawha Boulevard East
Charleston, West Virginia 25305