



Telephone: 1-800-535-7088
Email: nass-wv@nass.usda.gov



National Agricultural
Statistics Service
West Virginia Field Office

in cooperation with

West Virginia
Department of Agriculture

Released: October 2021

Volume 34, Number 10

In This Issue

- Red Meat Production
- Chickens And Eggs
- Third Quarter Milk Production
- October Crop Production

Red Meat Production

Charleston, West Virginia - Commercial red meat production during September 2021 totaled 900,000 pounds, this was down 28 percent from September 2020. Commercial red meat production is the carcass weight after slaughter including beef, veal, pork, lamb and mutton. Individual commodity production is total live weight of commercial slaughter.

Commercial cattle slaughter totaled 1,333,000 pounds live weight, down 29 percent from September 2020. Cattle slaughter totaled 1,300 head, down 500 head from the previous year. The average live weight was down 79 pounds from the previous year, at 989 pounds.

Commercial calf slaughter was not published to avoid disclosing individual operations.

Commercial hog slaughter totaled 192,000 pounds live weight, down 37 percent from last year. Hog slaughter totaled 700 head, down 300 head from the previous year. The average live weight was down 3 pounds from the previous year, at 292 pounds.

Commercial sheep and lamb slaughter was not published to avoid disclosing individual operations.

United States - Commercial red meat production for the United States totaled 4.58 billion pounds in September, down 3 percent from the 4.71 billion pounds produced in September 2020.

Beef production, at 2.30 billion pounds, was 2 percent below the previous year. Cattle slaughter totaled 2.79 million head, down 1 percent from September 2020. The average live weight was down 14 pounds from the previous year, at 1,365 pounds.

Veal production totaled 4.4 million pounds, 10 percent below September a year ago. Calf slaughter totaled 34,100 head, up 5 percent from September 2020. The average live weight was down 37 pounds from last year, at 224 pounds.

Pork production totaled 2.27 billion pounds, down 3 percent from the previous year. Hog slaughter totaled 10.8 million head, down 2 percent from September 2020. The average live weight was down 2 pounds from the previous year, at 283 pounds.



Lamb and mutton production, at 10.7 million pounds, was down 2 percent from September 2020. Sheep slaughter totaled 184,200 head, slightly below last year. The average live weight was 116 pounds, down 2 pounds from September a year ago.

January to September 2021 commercial red meat production was 41.5 billion pounds, up 1 percent from 2020. Accumulated beef production was up 4 percent from last year, veal was down 20 percent, pork was down 1 percent from last year, and lamb and mutton production was down 2 percent.

September 2020 contained 22 weekdays (including 1 holiday) and 4 Saturdays. September 2021 contained 22 weekdays (including 1 holiday) and 4 Saturdays.

Note: Percent changes are based on unrounded data.

Chickens And Eggs

United States - Egg production totaled 9.18 billion during September 2021, up 1 percent from last year. Production included 7.94 billion table eggs, and 1.24 billion hatching eggs, of which 1.17 billion were broiler-type and 71.2 million were egg-type. The average number of layers during September 2021 totaled 386 million, up slightly from last year. September egg production per 100 layers was 2,379 eggs, up 1 percent from September 2020.

Total layers in the United States on October 1, 2021 totaled 387 million, up slightly from last year. The 387 million layers consisted of 322 million layers producing table or market type eggs, 61.9 million layers producing broiler-type hatching eggs, and 2.89 million layers producing egg-type hatching eggs. Rate of lay per day on October 1, 2021, averaged 79.5 eggs per 100 layers, up 1 percent from October 1, 2020.

Egg-type chicks hatched during September 2021 totaled 49.2 million, down 2 percent from

September 2020. Eggs in incubators totaled 46.2 million on October 1, 2021, down 1 percent from a year ago.

Domestic placements of **egg-type pullet chicks** for future hatchery supply flocks by leading breeders totaled 289 thousand during September 2021, up 44 percent from September 2020.

Broiler-type chicks hatched during September 2021 totaled 802 million, down 1 percent from September 2020. Eggs in incubators totaled 695 million on October 1, 2021, up 4 percent from a year ago.

Leading breeders placed 9.62 million broiler-type pullet chicks for future domestic hatchery supply flocks during September 2021, down 1 percent from September 2020.

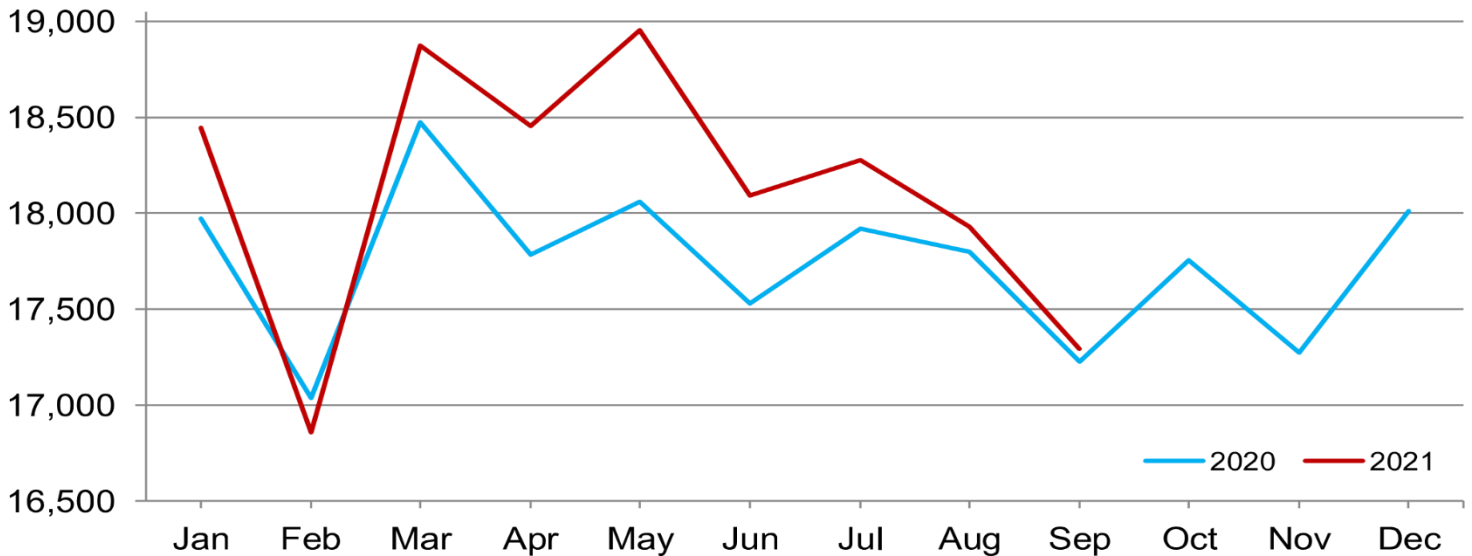


Third Quarter Milk Production

Charleston, West Virginia - Milk production in West Virginia totaled 18 million pounds or 2.1 million gallons during the July - September quarter of 2021. This is down 4 million pounds from the same period in 2020, and down 1 million pounds or 116,000 gallons from the April - June 2021 quarter. The number of dairy cows averaged 5,000 head, down 1,000 head from the same period in 2020, and unchanged from the previous quarter.

Monthly Milk Production - 24 Selected States

Million pounds



United States - Milk production in the United States during the July - September quarter totaled 55.9 billion pounds, up 0.9 percent from the July - September quarter last year. The average number of milk cows in the United States during the quarter was 9.45 million head, 48,000 head less than the April - June quarter, but 74,000 head more than the same period last year.

Note: A conversion of 8.6 pounds per gallon was used.

forecast, and down 0.15 ton per acre from 2020. The October 1 production forecast for alfalfa hay is not published for West Virginia. The next alfalfa hay estimate will be published in January 2022.

Corn planted is estimated at 51,000 acres, unchanged from the previous forecast, and unchanged from 2020. Growers expect to harvest 38,000 acres for grain, unchanged from the previous forecast, and unchanged from last year.

October Crop Production

Charleston, West Virginia - All other hay production is forecast at 945,000 tons, down 19 percent from the August 1 forecast of 1,161,000 tons, and down 6 percent from the 2020 crop. All other hay harvested acreage is expected to total 540,000 acres in 2021, this is unchanged from the August 1 forecast, and up 2 percent from 2020. Yield is expected to average 1.75 tons per acre, down 0.40 ton per acre from the August 1

United States - Alfalfa and alfalfa mixtures dry hay production for 2021 is forecast at 48.2 million tons, up 1 percent from the August forecast, but down 9 percent from 2020. Based on October 1 conditions, yields are expected to average 2.99 tons per acre, up 0.02 ton from the August forecast, but down 0.28 ton from last year. Harvested area is forecast at 16.1 million acres, unchanged from the *Acreage* report, but down 1 percent from 2020. Record high yields are forecast in Arizona and Colorado, while record low yields are forecast in Montana.

Other hay production is forecast at 72.3 million tons, up 2 percent from the August forecast, but

down 2 percent from 2020. Based on October 1 conditions, the United States yield is expected to average 2.04 tons per acre, up 0.04 ton from the August forecast, but down 0.01 ton from last year. Harvested area is forecast at 35.4 million acres, unchanged from the *Acreage* report, but down 2 percent from 2020. Record high yields are expected in Alabama.

Corn production for grain is forecast at 15.0 billion bushels, up slightly from the previous forecast and up 6 percent from 2020. Based on conditions as of October 1, yields are expected to average 176.5 bushels per harvested acre, up 0.2 bushel from the previous forecast and up 5.1 bushels from last year. After a thorough review of all available data, acreage estimates are unchanged from last month. Total planted area, at 93.3 million acres, is unchanged from the previous estimate, but up 3 percent from the previous year. Area harvested for grain, forecast

at 85.1 million acres, is unchanged from the previous forecast, but up 3 percent from the previous year.

Soybean production for beans is forecast at 4.45 billion bushels, up 2 percent from the previous forecast and up 5 percent from 2020. Based on conditions as of October 1, yields are expected to average 51.5 bushels per harvested acre, up 0.9 bushel from the previous forecast and up 0.5 bushel from 2020. After a thorough review of all available data acreage estimates are unchanged from last month. Total planted area, at 87.2 million acres, is unchanged from the previous estimate, but up 5 percent from the previous year. Area harvested for beans, forecast at 86.4 million acres, is unchanged from the previous forecast, but up 5 percent from the previous year.

NEXT ISSUE

Red Meat Production
Cattle on Feed
Chickens and Eggs

KENT LEONHARDT, COMMISSIONER
CHARMAINE WILSON, STATE STATISTICIAN

United States Department of Agriculture
National Agricultural Statistics Service
West Virginia Department of Agriculture
1900 Kanawha Boulevard East
Charleston, West Virginia 25305