



Telephone: 1-800-535-7088
 Email: nass-wv@nass.usda.gov



National Agricultural
 Statistics Service
 West Virginia Field Office
 in cooperation with
 West Virginia
 Department of Agriculture
 Kent Leonhardt, Commissioner
 David Knopf, EMR Director

Released: October 2022

Volume 35, Number 10

In This Issue

- RED MEAT PRODUCTION
- CHICKENS AND EGGS
- THIRD QUARTER MILK PRODUCTION
- OCTOBER CROP PRODUCTION
- COLD STORAGE

RED MEAT PRODUCTION

Charleston, West Virginia - Commercial red meat production during September 2022 totaled 1,100,000 pounds, this was up 12 percent from September 2021. Commercial red meat production is the carcass weight after slaughter including beef, veal, pork, lamb and mutton. Individual commodity production is total live weight of commercial slaughter.

Commercial cattle slaughter totaled 1,488,000 pounds live weight, up 9 percent from September 2021. Cattle slaughter totaled 1,500 head, up 100 head from the previous year. The average live weight was up 33 pounds from the previous year, at 1,018 pounds.

Commercial calf slaughter was not published to avoid disclosing individual operations.

Commercial hog slaughter totaled 254,000 pounds live weight, up 21 percent from last year. Hog slaughter totaled 800 head, up 100 head from the previous year. The average live weight was down 10 pounds from the previous year, at 300 pounds.

Commercial sheep and lamb slaughter was not published to avoid disclosing individual operations.

United States - Commercial red meat production for the United States totaled 4.67 billion pounds in September, up 2 percent from the 4.58 billion pounds produced in September 2021.

Beef production, at 2.39 billion pounds, was 4 percent above the previous year. Cattle slaughter totaled 2.90 million head, up 4 percent from September 2021. The average live weight was down 1 pound from the previous year, at 1,364 pounds.

Veal production totaled 4.2 million pounds, 5 percent below September a year ago. Calf slaughter totaled 30,800 head, down 10 percent from September 2021. The average live weight was up 14 pounds from last year, at 238 pounds.

Pork production totaled 2.26 billion pounds, down slightly from the previous year. Hog slaughter totaled 10.7 million head, down 1 percent from September 2021. The average live weight was up 2 pounds from the previous year, at 285 pounds.

Lamb and mutton production, at 10.7 million pounds, was down slightly from September 2021. Sheep slaughter totaled 168,800 head, 8 percent below last year. The average live weight was 125 pounds, up 9 pounds from September a year ago.

January to September 2022 commercial red meat production was 41.5 billion pounds, down slightly from 2021. Accumulated beef production was up 2 percent from last year, veal was up 4 percent, pork was down 2 percent from last year, and lamb and mutton production was down 4 percent.

September 2021 contained 22 weekdays (including 1 holiday) and 4 Saturdays. September 2022 contained 22 weekdays (including 1 holiday) and 4 Saturdays.

Note: Percent changes are based on unrounded data.

CHICKENS AND EGGS

United States - Egg production totaled 8.83 billion during September 2022, down 3 percent from last year. Production included 7.56 billion table eggs, and 1.27 billion hatching eggs, of which 1.18 billion were broiler-type and 89.6 million were egg-type. The

average number of layers during September 2022 totaled 373 million, down 3 percent from last year. September egg production per 100 layers was 2,365 eggs, up 1 percent from September 2021.

Total layers in the United States on October 1, 2022 totaled 373 million, down 4 percent from last year. The 373 million layers consisted of 307 million layers producing table or market type eggs, 62.6 million layers producing broiler-type hatching eggs, and 3.49 million layers producing egg-type hatching eggs. Rate of lay per day on October 1, 2022, averaged 78.6 eggs per 100 layers, up slightly from October 1, 2021.

Egg-type chicks hatched during September 2022 totaled 53.2 million, up 7 percent from September 2021. Eggs in incubators totaled 47.8 million on October 1, 2022, up 3 percent from a year ago.

Domestic placements of **egg-type pullet chicks** for future hatchery supply flocks by leading breeders totaled 263 thousand during September 2022, down 9 percent from September 2021.

Broiler-type chicks hatched during September 2022 totaled 839 million, up 5 percent from September 2021. Eggs in incubators totaled 720 million on October 1, 2022, up 4 percent from a year ago.

Leading breeders placed 8.24 million broiler-type **pullet chicks** for future domestic hatchery supply flocks during September 2022, down 14 percent from September 2021.

THIRD QUARTER MILK PRODUCTION

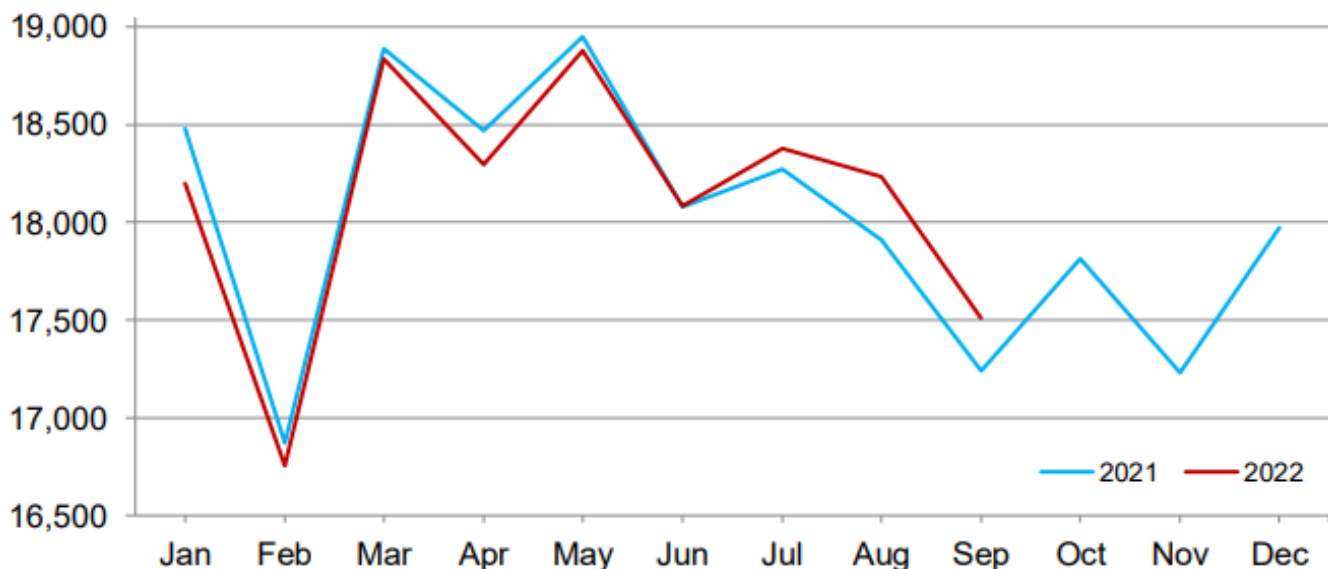
Charleston, West Virginia - Milk production in West Virginia totaled 18 million pounds or 2.1 million gallons during the July - September quarter of 2022. This is unchanged from the same period in 2021, but down 2 million pounds or 233,000 gallons from the April - June 2022 quarter. The number of dairy cows averaged 5,000 head, unchanged from the same period in 2021, and unchanged from the previous quarter.

United States - Milk production in the United States during the July - September quarter totaled 56.5 billion pounds, up 1.2 percent from the July - September quarter last year. The average number of milk cows in the United States during the quarter was 9.41 million head, unchanged from the April - June quarter, but 29,000 head less than the same period last year.

Note: A conversion of 8.6 pounds per gallon was used.

Monthly Milk Production - 24 Selected States

Million pounds



OCTOBER CROP PRODUCTION

Charleston, West Virginia - All other hay production is forecast at 990,000 tons, up 6 percent from the August 1 forecast of 935,000 tons, and up 16 percent from the 2021 crop. All other hay harvested acreage is expected to total 550,000 acres in 2022, this is unchanged from the August 1 forecast, but up 10 percent from 2021. Yield is expected to average 1.80 tons per acre, up 0.10 ton per acre from the August 1 forecast and up 0.10 ton per acre from 2021. The October 1 production forecast for alfalfa hay is not published for West Virginia. The next alfalfa hay estimate will be published in January 2023.

United States - Alfalfa and alfalfa mixtures dry hay production for 2022 is forecast at 48.8 million tons, down 1 percent from the August forecast and down 1 percent from 2021. Based on October 1 conditions, yields are expected to average 3.16 tons per acre, down 0.01 ton from the August forecast and down 0.07 ton from last year. Harvested area is forecast at 15.5 million acres, unchanged from the *Acreage* report, but up 1 percent from 2021. A record high yield is forecasted in Wyoming.

Other hay production is forecast at 63.2 million tons, down 7 percent from the August forecast and down 11 percent from 2021. Based on October 1 conditions, the United States yield is expected to average 1.75 tons per acre, down 0.13 ton from the August forecast and down 0.25 ton from last year. Harvested area is forecast at 36.0 million acres, unchanged from the *Acreage* report, but up 2 percent from 2021. A record high yield is expected in Idaho.

Corn production for grain is forecast at 13.9 billion bushels, down less than 1 percent from the previous forecast and down 8 percent from 2021. Based on conditions as of October 1, yields are expected to average 171.9 bushels per harvested acre, down 0.6 bushel from the previous forecast and down 4.8 bushels from last year. After a thorough review of all available data, acreage estimates are unchanged from last month. Total planted area, at 88.6 million acres, is unchanged from the previous estimate, but down 5 percent from the previous year. Area harvested for grain, forecast at 80.8 million acres, is unchanged from the previous forecast, but down 5 percent from the previous year.

Soybean production for beans is forecast at 4.31 billion bushels, down 1 percent from the previous forecast and down 3 percent from 2021. Based on conditions as of October 1, yields are expected to average 49.8 bushels per acre, down 0.7 bushel from the previous forecast and down 1.9 bushels from 2021. After a thorough review of all available data acreage estimates are unchanged from last month. Total planted area, at 87.5 million acres, is unchanged from the previous estimate, but up less than 1 percent from the previous year. Area harvested for beans in the United States is forecast at 86.6 million acres, unchanged from the previous forecast, but up less than 1 percent from 2021.

COLD STORAGE

United States - Total natural cheese stocks in refrigerated warehouses on September 30, 2022 were down 1 percent from the previous month, but up 1 percent from September 30, 2021.

Butter stocks were down 4 percent from last month and down 18 percent from a year ago.

Total frozen poultry supplies on September 30, 2022 were up slightly from the previous month and up 10 percent from a year ago. Total stocks of chicken were up 5 percent from the previous month and up 18 percent from last year. Total pounds of turkey in freezers were down 9 percent from last month and down 5 percent from September 30, 2021.

Total frozen fruit stocks were up 6 percent from last month and up 8 percent from a year ago.

Total frozen vegetable stocks were up 21 percent from last month and up 1 percent from a year ago.

Total red meat supplies in freezers were up 1 percent from the previous month and up 17 percent from last year. Total pounds of beef in freezers were up 2 percent from the previous month and up 19 percent from last year. Frozen pork supplies were down slightly from the previous month, but up 14 percent from last year. Stocks of pork bellies were up 3 percent from last month and up 183 percent from last year.

United States Department of Agriculture
National Agricultural Statistics Service
West Virginia Department of Agriculture
1900 Kanawha Boulevard East
Charleston, West Virginia 25305

2022 CENSUS OF AGRICULTURE

YOUR VOICE. YOUR FUTURE. YOUR OPPORTUNITY.

Census of Agriculture

The Census of Agriculture is a complete count of U.S. farms and ranches and the people who operate them. Even small plots of land - whether rural or urban - growing fruit, vegetables or some food animals count if \$1,000 or more of such products were raised and sold, or normally would have been sold, during the Census year. The Census of Agriculture, taken only once every five years, looks at land use and ownership, operator characteristics, production practices, income and expenditures. For America's farmers and ranchers, the Census of Agriculture is their voice, their future, and their opportunity.

Census Key Dates: November 2022 – census mails out
February 2023 – response deadline
Spring/summer 2024 – data release

NEXT ISSUE
Red Meat Production
Cattle on Feed
Chickens and Eggs