



Telephone: 1-304-357-5123  
Email: nass-wv@usda.gov



National Agricultural  
Statistics Service  
West Virginia Field Office  
in cooperation with  
West Virginia  
Department of Agriculture  
Kent Leonhardt, Commissioner  
Alissa Cowell-Mytar, State Statistician

Released: October 2023

Volume 36, Number 10

**In This Issue**

- RED MEAT PRODUCTION**
- CHICKENS AND EGGS**
- THIRD QUARTER MILK PRODUCTION**
- OCTOBER CROP PRODUCTION**
- COLD STORAGE**

**RED MEAT PRODUCTION**

**Charleston, West Virginia - Commercial red meat production** during September 2023 totaled 1,200,000 pounds, this was up 12 percent from September 2022. Commercial red meat production is the carcass weight after slaughter including beef, veal, pork, lamb and mutton. Individual commodity production is total live weight of commercial slaughter.

**Commercial cattle slaughter** totaled 1,721,000 pounds live weight, up 11 percent from September 2022. Cattle slaughter totaled 1,600 head, up 100 head from the previous year. The average live weight was up 40 pounds from the previous year, at 1,057 pounds.

**Commercial calf slaughter** was not published because data were less than level of precision shown or not applicable.

**Commercial hog slaughter** totaled 319,000 pounds live weight, up 25 percent from last year. Hog slaughter totaled 1,100 head, up 200 head from the previous year. The average live weight was down 3 pounds from the previous year, at 293 pounds.

**Commercial sheep and lamb slaughter** was not published to avoid disclosing data for individual operations.

**United States - Commercial red meat production** for the United States totaled 4.35 billion pounds in September, down 7 percent from the 4.66 billion pounds produced in September 2022.

**Beef production**, at 2.15 billion pounds, was 10 percent below the previous year. Cattle slaughter totaled 2.61 million head, down 10 percent from September 2022. The average live weight was down 2 pounds from the previous year, at 1,362 pounds.

**Veal production** totaled 3.6 million pounds, 15 percent below September a year ago. Calf slaughter totaled 21,700 head, down 31 percent from September 2022. The average live weight was up 50 pounds from last year, at 287 pounds.

**Pork production** totaled 2.19 billion pounds, down 3 percent from the previous year. Hog slaughter totaled 10.5 million head, down 2 percent from September 2022. The average live weight was down 4 pounds from the previous year, at 281 pounds.

**Lamb and mutton production**, at 10.2 million pounds, was down 6 percent from September 2022. Sheep slaughter totaled 173,800 head, 1 percent above last year. The average live weight was 116 pounds, down 9 pounds from September a year ago.

**January to September 2023 commercial red meat production** was 40.4 billion pounds, down 2 percent from 2022. Accumulated beef production was down 5 percent from last year, veal was down 12 percent, pork was up slightly from last year, and lamb and mutton production was down 3 percent.

September 2022 contained 22 weekdays (including 1 holiday) and 4 Saturdays. September 2023 contained 21 weekdays (including 1 holiday) and 5 Saturdays.

*Note: Percent changes are based on unrounded data.*

**CHICKENS AND EGGS**

**United States - Egg production** totaled 9.16 billion during September 2023, up 3 percent from last year. Production included 7.88 billion table eggs, and 1.28 billion hatching eggs, of which 1.19 billion were broiler-type and 94.5 million were egg-type. The average number of layers during September 2023

totaled 387 million, up 3 percent from last year. September egg production per 100 layers was 2,367 eggs, up slightly from September 2022.

**Total layers** in the United States on October 1, 2023 totaled 389 million, up 3 percent from last year. The 389 million layers consisted of 322 million layers producing table or market type eggs, 63.4 million layers producing broiler-type hatching eggs, and 3.73 million layers producing egg-type hatching eggs. Rate of lay per day on October 1, 2023, averaged 78.9 eggs per 100 layers, up slightly from October 1, 2022.

**Egg-type chicks** hatched during September 2023 totaled 51.1 million, down 4 percent from September 2022. Eggs in incubators totaled 50.3 million on October 1, 2023, up 5 percent from a year ago.

Domestic placements of **egg-type pullet chicks** for future hatchery supply flocks by leading breeders totaled 270 thousand during September 2023, up 3 percent from September 2022.

**Broiler-type chicks** hatched during September 2023 totaled 814 million, down 3 percent from September 2022. Eggs in incubators totaled 692 million on October 1, 2023, down 4 percent from a year ago.

Leading breeders placed 8.14 million broiler-type **pullet chicks** for future domestic hatchery supply flocks during September 2023, down slightly from September 2022.

### THIRD QUARTER MILK PRODUCTION

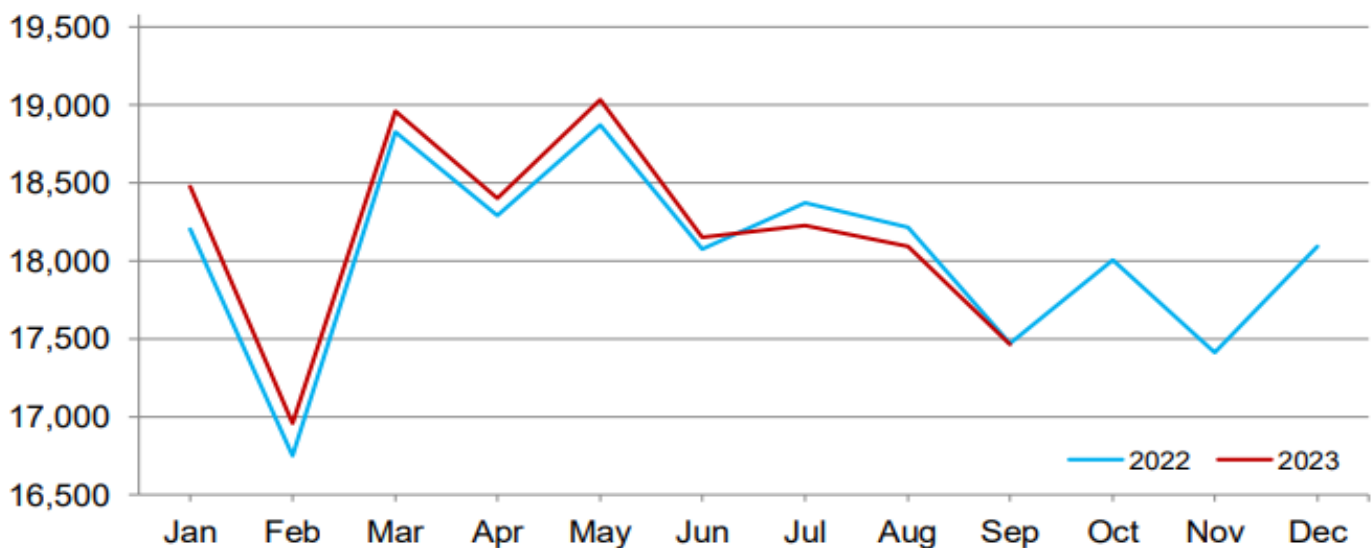
**Charleston, West Virginia - Milk production** in West Virginia totaled 16 million pounds or 1.9 million gallons during the July - September quarter of 2023. This is down 11 percent from the same period in 2022, and down 1 million pounds or 116,279 gallons from the April - June 2023 quarter. The number of dairy cows averaged 4,500 head, down 500 head from the same period in 2022, but unchanged from the previous quarter.

**United States - Milk production** in the United States during the July - September quarter totaled 56.1 billion pounds, down 0.7 percent from the July - September quarter last year. The average number of milk cows in the United States during the quarter was 9.38 million head, 43,000 head less than the April - June quarter, and 33,000 head less than the same period last year.

*Note: A conversion of 8.6 pounds per gallon was used.*

## Monthly Milk Production - 24 Selected States

Million pounds



## OCTOBER CROP PRODUCTION

**Charleston, West Virginia - All other hay** production is forecast at 1,020,000 tons, up 6 percent from the August 1 forecast of 960,000 tons, but down 2 percent from 2022. All other hay harvested acreage is expected to total 600,000 acres in 2023, unchanged from the August 1 forecast, but up 9 percent from 2022. Yield is expected to average 1.70 tons per acre, up 0.10 ton per acre from the August 1 forecast, but down 0.20 ton per acre from 2022. The October 1 production forecast for alfalfa hay is not published for West Virginia. The next alfalfa hay estimate will be published in January 2024.

**United States - Alfalfa and alfalfa mixtures dry hay** production for 2023 is forecast at 52.7 million tons, up 8 percent from the August forecast and up 10 percent from 2022. Based on October 1 conditions, yields are expected to average 3.37 tons per acre, up 0.24 ton from the August forecast and up 0.15 ton from last year. Harvested area is forecast at 15.7 million acres, unchanged from the *Acreage* report but up 5 percent from 2022. Record high yields are forecast for New Mexico and North Dakota.

**Other hay** production is forecast at 70.1 million tons, up less than 1 percent from the August forecast and up 8 percent from 2022. Based on October 1 conditions, the United States yield is expected to average 1.93 tons per acre, up 0.01 ton from the August forecast and up 0.06 ton from last year. Harvested area is forecast at 36.3 million acres, unchanged from the *Acreage* report but up 5 percent from 2022. Record high yields expected in Alabama, Georgia, Nebraska, North Dakota, and Wyoming.

**Corn** production for grain is forecast at 15.1 billion bushels, down less than 1 percent from the previous forecast, but up 10 percent from 2022. Based on conditions as of October 1, yields are expected to average 173.0 bushels per harvested acre, down 0.8 bushel from the previous forecast and down 0.4 bushel from last year. Area harvested for grain, forecast at 87.1 million acres, is unchanged from the previous forecast, but up 10 percent from the last year.

**Soybean** production for beans is forecast at 4.10 billion bushels, down 1 percent from the previous forecast and down 4 percent from 2022. Based on

conditions as of October 1, yields are expected to average 49.6 bushels per acre, down 0.5 bushel from the previous forecast, but equal to 2022. Area harvested for beans in the United States is forecast at 82.8 million acres, unchanged from the previous forecast, but down 4 percent from 2022.



## COLD STORAGE

**United States - Total natural cheese stocks** in refrigerated warehouses on September 30, 2023 were down 2 percent from the previous month, but up slightly from September 30, 2022.

**Butter stocks** were down 6 percent from last month, but up 3 percent from a year ago.

**Total frozen poultry supplies** on September 30, 2023 were down 1 percent from the previous month and down slightly from a year ago. Total stocks of chicken were up 2 percent from the previous month, but down 3 percent from last year. Total pounds of turkey in freezers were down 6 percent from last month, but up 7 percent from September 30, 2022.

**Total frozen fruit stocks** were up 9 percent from last month and up 1 percent from a year ago.

**Total frozen vegetable stocks** were up 12 percent from last month and up 1 percent from a year ago.

**Total red meat supplies** in freezers were up 2 percent from the previous month, but down 17 percent from last year. Total pounds of beef in freezers were up 6 percent from the previous month, but down 20 percent from last year. Frozen pork supplies were down 1 percent from the previous month and down 14 percent from last year. Stocks of pork bellies were down 19 percent from last month and down 19 percent from last year.

United States Department of Agriculture  
National Agricultural Statistics Service  
West Virginia Department of Agriculture  
1900 Kanawha Boulevard East  
Charleston, West Virginia 25305

Have your photo featured in the NASS Annual Bulletin. Show us your best West Virginia!  
Submit photos to be used in 2024 by September 1, 2024 to Alissa Cowell-Mytar at  
[Alissa.Cowell-Mytar@usda.gov](mailto:Alissa.Cowell-Mytar@usda.gov) or [nass-wv@usda.gov](mailto:nass-wv@usda.gov)

A release form must be completed to allow NASS to use your photo in future Annual Bulletins or NASS PowerPoints. You must have the permission of the person in the photo and the owner of the object (farm/barn/animal/farm equipment/farmer).

Photos must include the following:

1. County in WV where the photograph was taken
2. Name of photographer and relationship to objects in the photograph
3. Name of person or owner of the object of the photograph
4. Confirmation that the photographer's name can be included in the Annual Bulletin with the published photograph

Categories:

1. General (barns, hay fields, crops, farmer at work, farm equipment)
2. Cattle/Calves
3. Sheep/Goats
4. Pigs/Hogs
5. Chickens
6. Turkeys
7. Corn/Silage
8. Hay
9. Bees
10. Maple Syrup (trees, production, taps)

\*No photos will be used without a signed release form on hand.

You may submit multiple photos. Not all photos will be used or may be used in future publications or presentations.

