



# Wisconsin Crop Weather

Compiled by the Wisconsin Field Office of  
USDA's National Agricultural Statistics Service

August 7, 2006

Vol. 06, No. 18

## Rains Refuel the North

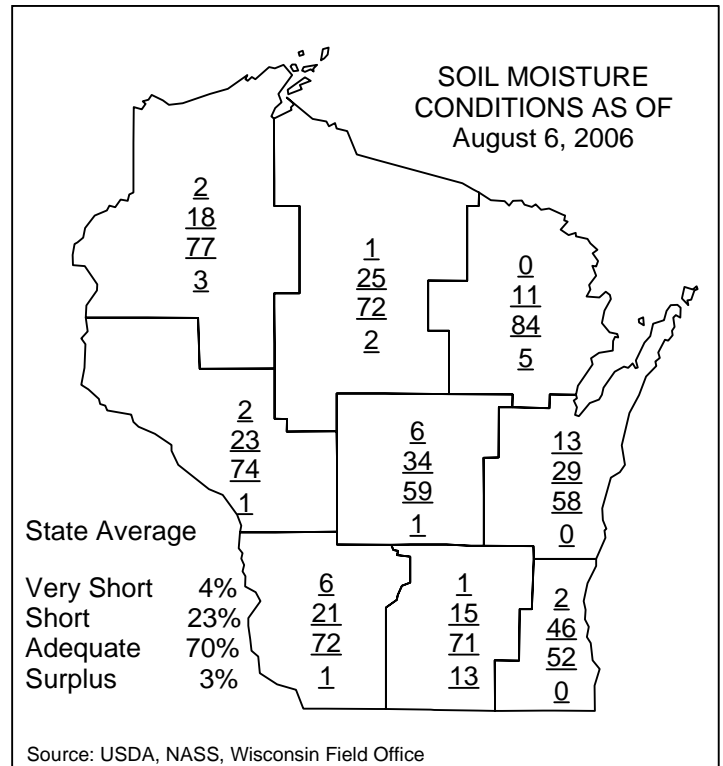
Rains were steady throughout the week in the north, giving most crops a critical boost. Soil moisture conditions improved, as they were at 4 percent very short, 23 percent short, 70 percent adequate, and 3 percent surplus. Temperatures were above normal for the week, ranging from 5 to 8 degrees above normal. Average high temperatures were in the high 80s to low 90s in most areas. Low temperatures averaged in the high 60s to low 70s during the week. Rainfall totals ranged from 0.18 inches in Madison to 3.42 inches in Eau Claire. Last week there was an average of 5.3 days suitable for fieldwork in Wisconsin.

**Corn** dough was at 18 percent, ahead of last year's 13 percent and the 5-year average of 8 percent. Corn silked was at 89 percent, behind last year's 92 percent, but ahead of the 5-year average of 74 percent, according to the Wisconsin Field Office of USDA's National Agricultural Statistics Service. Corn was rated as mostly fair to good, with rains greatly helping in the north. Late-planted corn and corn on non-sandy soils seemed to benefit the most from the rain.

**Soybeans** bloomed was at 90 percent, behind last year's 92 percent, but ahead of the 5-year average of 79 percent. Soybeans setting pods was reported at 65 percent complete, behind last year's progress of 69 percent, but ahead of the 5-year average of 43 percent. Soybeans looked good, although there were some reports of aphids in some southern Wisconsin soybean fields.

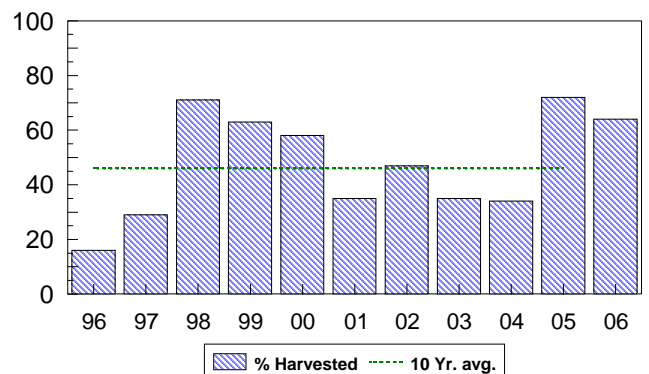
Second cutting **alfalfa** was reported at 95 percent complete, above last year's 94 percent and the 5-year average of 86 percent. Third cutting alfalfa was at 26 percent complete, ahead of last year's 19 percent and the 5-year average of 14 percent. Third cutting progress is second only to 1998's record pace, but widespread rains in the north should give most third crop a boost.

**Winter wheat** harvested was at 83 percent complete, behind last year's average of 90 percent, but ahead of the 5-year average of 72 percent. **Oats** harvested for grain was reported at 64 percent, behind last year's 72 percent, but ahead of the 5-year average of 45 percent. **Cucumbers**, **snapbeans**, and **sweet corn** were being harvested.



| Wisconsin Crop Conditions as of August 6, 2006 |         |      |      |      |           |
|--|---------|------|------|------|-----------|
| Item   | V.-poor | Poor | Fair | Good | Excellent |
| Percent  |         |      |      |      |           |
| Corn   | 7       | 12   | 23   | 38   | 20        |
| Soybeans                                       | 3       | 10   | 23   | 39   | 25        |
| Oat  | 4       | 8    | 33   | 43   | 12        |
| Pasture  | 17      | 20   | 31   | 28   | 4         |

**Progress of Oats Harvested for Grain**  
August 6, 1996 - 2006  
Wisconsin



| Crop and percent of acreage | District average |    |    |    |    |    |    |    |    |           | State average |                |    |
|-----------------------------|------------------|----|----|----|----|----|----|----|----|-----------|---------------|----------------|----|
|                             | NW               | NC | NE | WC | C  | EC | SW | SC | SE | This year | Last year     | 5-year average |    |
|                             | Corn silked      | 86 | 90 | 87 | 91 | 76 | 71 | 98 | 94 | 92        | 89            | 92             | 74 |
| Corn dough                  | 7                | 16 | 9  | 17 | 14 | 24 | 18 | 24 | 7  | 18        | 13            | 8              |    |
| Soybeans bloomed            | 94               | 86 | 81 | 92 | 79 | 75 | 94 | 97 | 92 | 90        | 92            | 79             |    |
| Soybeans setting pods       | 84               | 62 | 45 | 67 | 49 | 37 | 84 | 74 | 65 | 65        | 69            | 43             |    |
| Second cutting hay          | 99               | 90 | 96 | 96 | 94 | 90 | 97 | 99 | 96 | 95        | 94            | 86             |    |
| Third cutting hay           | 15               | 9  | 30 | 32 | 31 | 12 | 37 | 43 | 13 | 26        | 19            | 14             |    |
| Oats harvested for grain    | 55               | 69 | 36 | 87 | 68 | 34 | 77 | 74 | 75 | 64        | 72            | 45             |    |
| Winter wheat harvested      | 65               | 83 | 89 | 90 | 97 | 73 | 75 | 94 | 86 | 83        | 90            | 72             |    |

**Quotes from Farm Reporters and County Ag Agents**

**BARRON-A.B.:** Corn has either resumed a green color, or has shown it is completely dead after the rain on Tuesday. It is amazing that corn thought to be dead is able to unroll, shoot a tassel, and push silks, when the areas within the same field that silked earlier are nearly at the roasting ear stage. Third cutting hay that was completely dormant has now greened-up and should make another cutting. Weed pressure is big with the reduced canopy of most crops. Soybeans are short, but look to be setting pods. Winter wheat crop was average, but straw was short. Spring wheat was well below average in most fields, with little straw, compared to normal. Grain quality was excellent.

**BAYFIELD-S.S.:** We went from drought to 5.0-10.0 inches of rain. Things are starting to green-up again, but it might be too late for most crops.

**TAYLOR-M.B.:** After the rains, most crops are looking a lot better. Some corn that has already pollinated will be very low in quality.

**VILAS-L.K.:** First crop hay is still being made. Quantity and quality are about fair. Much-needed rain fell in abundance this week.

**LANGLADE-A.K.:** Replenished 3.0 inches of uniform rain on Tuesday and Wednesday. Last week's amounts were very uneven between 2.0-5.0 inches. Third crop hay went from brown to nice regrowth very quickly. Soybeans look good. Early corn for grain suffered; uneven pollination and late maturity. Silage corn looks very good now. Corn loss in our area ranges from very little to 50 percent, depending on soil type and weed control.

**OCONTO-K.H.:** Generally, corn and soybeans both look good. It appears drought and heat broke before serious damage was done. Local winter wheat yields and quality reported to be very good. Some wheat was standing yet when rains came. Third crop hay harvest well underway for those on calendar cutting schedule with custom harvesters.

**BUFFALO-R.S.:** We must have enough rain now. The tree frogs have been seen every night. Soybeans seem taller than usual. Third crop hay is being made. Corn has good color. Pastures are slow to recover.

**DUNN-J.F.:** About 3.5 inches of rain was received this past week. It certainly bought us some time. A lot of corn on the sandy soil is going to be marginal in terms of both grain and corn silage yield. The rains sure greened-up the grass. The alfalfa has started new growth as well.

**WAUPACA-L.B.:** We received 2.0 inches of rain last week, which brought the soil moisture pretty much back to normal. Weeds are becoming a problem here.

**DOOR-R.S.:** Corn and soybeans look good.

**LAFAYETTE-M.R.:** Very little of this years original crop potential production is lost due to weather so far.

**DANE-D.F.:** Third crop hay has been excellent - producers are looking to sell some hay. Rainfall continues to provide for excellent moisture conditions for all crops.

**DODGE-G.R.:** All crops survived triple digit temperatures and heat indexes of 110 or more this week. Localized intermittent storms brought some relief during the warm spell. Little, if any, harvest activity during the extreme heat. Cool front at week's end will bring relief.

**KENOSHA-J.H.:** Getting dry. Only 0.01 of an inch of rain for last week. Along with the extreme heat, crops are beginning to show stress.

**WASHINGTON-R.B.:** Third cutting hay is like first cutting; very good. Soybeans are growing very well-looks like a good year, but we do have aphids. With all the rain-2.60 inches, corn is doing very well. Wheat is yielding 70 -110 bushels per acre.



USDA, NASS, Wisconsin Field Office  
P.O. Box 8934  
Madison, WI 53708-8934  
(608) 224-4848  
<http://www.nass.usda.gov/wi/rlsetoc.htm>

**Robert J. Battaglia**  
Director

**Ryan King**  
Statistician

This report has been made possible through the cooperative efforts of the U.S. Department of Agriculture, and the Wisconsin Department of Agriculture, Trade and Consumer Protection, and the National Weather Service.

**Wisconsin Weekly Weather, Selected Cities, Ending as of 7:00 a.m. on August 6, 2006**

| City       | Temperature |           |           |          |      |                       | Growing degree days (modified base 50) 1/ |                           | Precipitation |              |                          |              |
|------------|-------------|-----------|-----------|----------|------|-----------------------|---|---------------------------|---------------|--------------|--------------------------|--------------|
|            | Avg. max.   | Avg. min. | High max. | Low min. | Avg. | Avg dep. from normal* | Mar. 1 to Aug. 5                          | Mar. 1 to Aug. 5 normal * | Last week     | Since June 1 | June 1 dep. from normal* | Year to date |
| Eau Claire | 90          | 67        | 103       | 59       | 78   | 6                     | 2092                                      | 1635                      | 3.42          | 7.07         | -1.76                    | 16.31        |
| Green Bay  | 86          | 65        | 94        | 59       | 75   | 5                     | 1802                                      | 1509                      | 2.68          | 7.74         | 0.30                     | 19.75        |
| La Crosse  | 90          | 70        | 102       | 63       | 80   | 6                     | 2170                                      | 1829                      | 0.47          | 5.36         | -3.57                    | 18.05        |
| Madison    | 88          | 69        | 95        | 59       | 79   | 8                     | 1947                                      | 1780                      | 0.18          | 6.91         | -1.72                    | 21.67        |
| Milwaukee  | 90          | 70        | 98        | 64       | 80   | 8                     | 1848                                      | n.a.                      | 0.58          | 8.15         | 0.39                     | 23.64        |

1/Formula used: GDD = (daily maximum (86°) + daily minimum (50°))/2-50°; where 86° is used if the maximum exceeds 86° and 50° is used if the minimum falls below 50°. \*Normal based on 1971-2000 data. Source: NCEP/NOAA Climate Prediction Center <<http://www.cpc.ncep.noaa.gov>>. N.a. = not available. T = trace.