



United States Department of Agriculture
National Agricultural Statistics Service

Sheep & Lamb Losses



Wyoming Field Office
PO Box 1148 · Cheyenne, WY 82003
307-432-5600 • FAX 307-432-5598 • www.nass.usda.gov/wy

February 18, 2009

Dear Data Users,

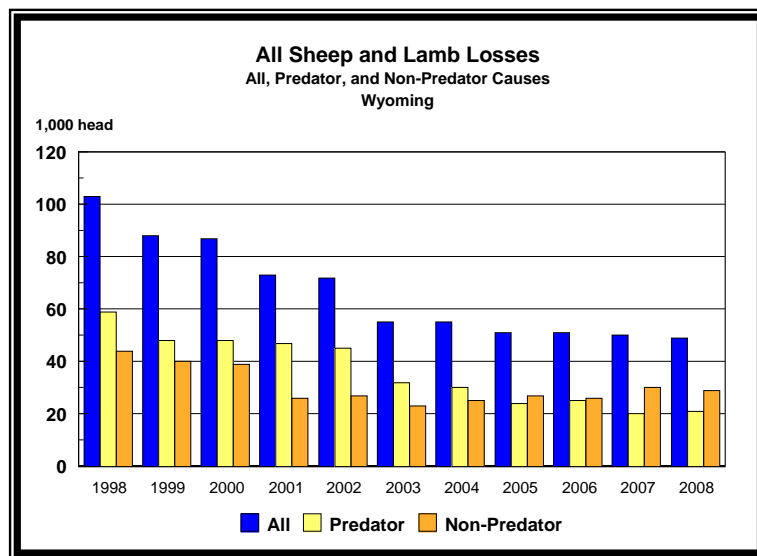
Wyoming sheep and lamb producers lost an estimated 49,000 head of sheep and lambs to predators, weather, lambing problems, disease and other causes in 2008 according to our annual survey. Total losses were down 1,000 head from the previous year. Predators accounted for almost 42 percent of the losses. The 2008 lamb crop totaled 260,000 lambs marked, docked, or branded which was down 4 percent from 2007. Adding in the lambs lost before docking results in a potential lamb supply of 283,000 head. Of these, 15,500 or 53 percent were lost to various non-predator causes, unchanged from 2007.

These data are based on reports from producers on our annual January Sheep and Goat Survey. We thank all Wyoming ranchers and farmers for their help with this survey. We also thank the Wyoming Business Council, Agribusiness Division who funds this report as part of the annual agreement with our agency to provide statistics for Wyoming agriculture.

If you have any question about this report please call us toll-free at 1-800-892-1660.

Sincerely,

Glenda Shepler
Director



HIGHLIGHTS

PREDATOR LOSSES HIGHER: Wyoming sheep producers lost 20,500 sheep and lambs to predators in 2008, up 4 percent from 2007. Coyotes were again the biggest predator taking 70 percent of the total predator losses and 29 percent of all losses. Losses to weather, disease and other non-predator causes decreased by 1,900 head to 28,500.

NON-PREDATOR LAMB LOSSES UP SLIGHTLY: Sheep producers lost 39,000 lambs before or after docking in 2008, up 2,000 head from 2007. Losses to predators accounted for 47 percent of the total, up 1,100 from 2007. Losses of lambs to weather, disease, and other non-predator causes were up 900 head to 20,600.

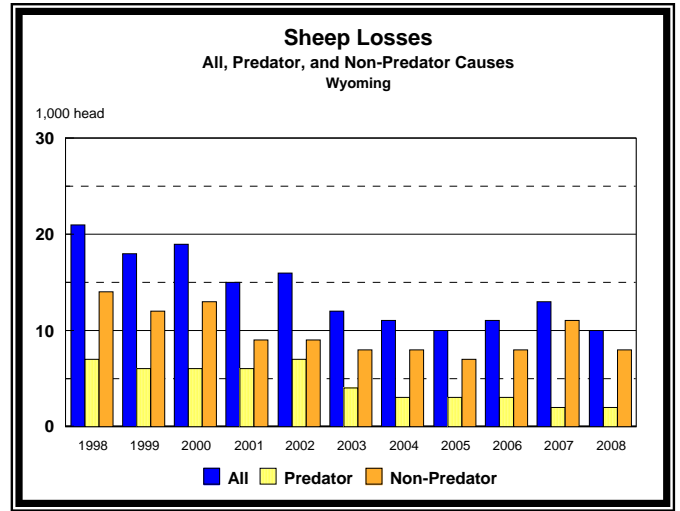
SHEEP LOSSES LOWER: Sheep losses in Wyoming during 2008 totaled 10,000 head, down 3,000 head from 2007. Predator losses were down 200 head to 2,100 and non-predator losses were down 2,800 head to 7,900.

VALUE OF LOSSES DOWN: Sheep producers lost an estimated \$3.8 million due to sheep and lamb deaths in 2008, down from the previous year. Predation accounted for \$1.4 million or 38 percent of the total.

Losses of Sheep by Cause: Wyoming, 2007 and 2008

Cause of Loss	2007		2008	
	Head	% of Total 1/	Head	% of Total 1/
Bears	300	2.3	300	3.0
Bobcats	100	0.8	—	—
Coyotes	1,300	10.0	1,200	12.0
Dogs	200	1.5	100	1.0
Eagles	—	—	100	1.0
Wolves	100	0.8	—	—
Foxes	—	—	200	2.0
Mountain Lion	200	1.5	200	2.0
Other Predators	100	0.8	—	—
Total Predators	2,300	17.7	2,100	21.0
Disease	600	4.6	700	7.0
Over-eating	100	0.8	100	1.0
Weather	5,500	42.3	1,800	18.0
Lambing Complications	1,200	9.2	1,100	11.0
Old Age	1,500	11.5	2,700	27.0
On Back	400	3.1	500	5.0
Poisoning	800	6.2	700	7.0
Theft	300	2.3	100	1.0
Other Non-Predators	300	2.3	200	2.0
Total Non-Predators	10,700	82.3	7,900	79.0
Total Loss All Causes	13,000	100.0	10,000	100.0

1/ May not add due to rounding.



Losses of Lambs by Cause: Wyoming, 2007 and 2008

Cause of Loss	2007				2008			
	Before Docking	After Docking	Total Head	% of Total 1/	Before Docking	After Docking	Total Head	% of Total 1/
Bears	—	600	600	1.6	100	600	700	1.8
Bobcats	200	300	500	1.4	100	200	300	0.8
Coyotes	4,100	7,500	11,600	31.4	4,600	8,600	13,200	33.9
Dogs	200	500	700	1.9	100	200	300	0.8
Eagles	800	600	1,400	3.8	1,200	300	1,500	3.9
Wolves	—	400	400	1.1	—	100	100	0.3
Foxes	700	500	1,200	3.2	1,100	400	1,500	3.9
Mountain Lions	—	600	600	1.6	100	500	600	1.5
Other Predator	200	100	300	0.8	200	—	200	0.5
Total Predators	6,200	11,100	17,300	46.8	7,500	10,900	18,400	47.2
Disease	1,100	2,000	3,100	8.4	1,000	1,900	2,900	7.4
Over-eating	200	400	600	1.6	200	900	1,100	2.8
Weather	7,000	2,500	9,500	25.7	11,100	1,300	12,400	31.8
Lambing	3,200	—	3,200	8.6	2,500	—	2,500	6.4
On Back	—	300	300	0.8	—	—	—	—
Poisoning	100	800	900	2.4	300	500	800	2.0
Theft	—	300	300	0.8	100	200	300	0.8
Other Non-Predators	200	1,600	1,800	4.9	300	300	600	1.5
Total Non-Predators	11,800	7,900	19,700	53.2	15,500	5,100	20,600	52.8
Total Loss All Causes	18,000	19,000	37,000	100.0	23,000	16,000	39,000	100.0

1/ May not add due to rounding.

Losses of Sheep and Lambs by Cause: Wyoming, 2004-2008 1/

Cause of Loss	2004		2005		2006		2007		2008	
	Total Head	% of Total 2/	Total Head	% of Total 2/	Total Head	% of Total 2/	Total Head	% of Total 2/	Total Head	% of Total 2/
Bears	1,000	1.8	1,300	2.5	1,300	2.5	900	1.8	1,000	2.0
Bobcats	300	0.5	600	1.2	600	1.2	600	1.2	300	0.6
Coyotes	19,700	35.8	15,600	30.6	17,200	33.7	12,900	25.8	14,400	29.4
Dogs	500	0.9	300	0.6	500	1.0	900	1.8	400	0.8
Eagles	3,500	6.4	1,700	3.3	1,800	3.5	1,400	2.8	1,600	3.3
Wolves	200	0.4	1,000	2.0	300	0.6	500	1.0	100	.2
Fox	2,700	4.9	1,800	3.5	1,400	2.7	1,200	2.4	1,700	3.5
Mountain Lions	1,400	2.5	1,200	2.4	1,100	2.2	800	1.6	800	1.6
Ravens 3/	400	0.7	—	—	—	—	—	—	—	—
Other Predators	300	0.5	500	1.0	400	0.8	400	0.8	200	0.4
Total Predators	30,000	54.5	24,000	47.1	24,600	48.2	19,600	39.2	20,500	41.9
Disease	4,300	7.8	3,000	5.9	2,900	5.7	3,700	7.4	3,700	7.6
Over-eating	1,400	2.5	1,200	2.4	1,300	2.5	700	1.4	1,100	2.2
Weather	6,600	12.0	9,100	17.8	7,200	14.1	15,000	30.0	14,200	29.0
Lambing Complications	6,700	12.2	7,100	13.9	6,900	13.5	4,400	8.8	3,600	7.4
Old Age	1,900	3.5	1,500	2.9	2,200	4.3	1,500	3.0	2,700	5.5
On Back	700	1.3	500	1.0	900	1.8	700	1.4	500	1.0
Poison	2,000	3.6	2,800	5.5	2,300	4.5	1,700	3.4	1,500	3.1
Theft	300	0.5	200	0.4	300	0.6	600	1.2	400	0.8
Other Causes	1,100	2.0	1,600	3.1	2,400	4.7	2,100	4.2	800	1.6
Total Non-Predators	25,000	45.5	27,000	52.9	26,400	51.8	30,400	60.8	28,500	58.2
Total Loss All Causes	55,000	100.0	51,000	100.0	51,000	100.0	50,000	100.0	49,000	100.0

1/ Includes all lamb losses both before and after docking.

2/ May not add due to rounding.

3/ Included in "Other Predators" except in 2004.

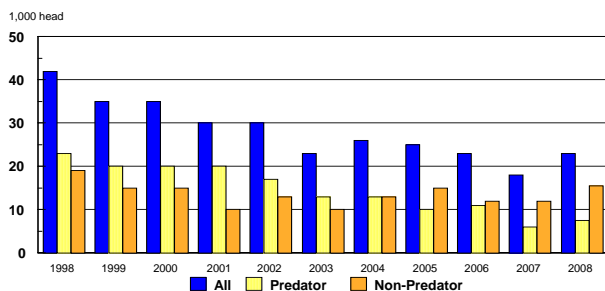
Value of Losses of Sheep and Lambs: Wyoming, 2007 and 2008 1/ 2/

Cause of Loss	Sheep		Lambs		Sheep & Lambs	
	2007	2008	2007	2008	2007	2008
	Dollars		Dollars		Dollars	
Bears	44,550	41,550	36,360	43,680	80,910	85,230
Bobcats	14,850	—	30,300	18,720	45,150	18,720
Coyotes	193,050	166,200	702,960	823,680	896,010	989,880
Dogs	29,700	13,850	42,420	18,720	72,120	32,570
Eagles	—	13,850	85,840	93,600	84,840	107,450
Wolves	14,850	—	24,240	6,240	39,090	6,240
Foxes	—	27,700	72,720	93,600	72,720	121,300
Mountain Lions	29,700	27,700	36,360	37,440	66,060	65,140
Other Predators	14,850	—	18,180	12,480	33,030	12,480
Total Predators	341,550	290,850	1,048,380	1,148,160	1,389,930	1,439,010
Disease	89,100	96,950	187,860	180,960	276,960	277,910
Over-eating	14,850	13,850	36,360	68,640	51,210	82,490
Weather	816,750	249,300	575,700	773,760	1,392,450	1,023,060
Lambing Complications	178,200	152,350	193,920	156,000	372,120	308,350
Old Age	222,750	373,950	—	—	222,750	373,950
On Back	59,400	69,250	18,180	—	77,580	69,250
Poison	118,800	96,950	54,540	49,920	173,340	146,870
Theft	44,550	13,850	18,180	18,720	62,730	32,570
Other Causes	44,550	27,700	109,080	37,440	153,630	65,140
Total Non-Predators	1,588,950	1,094,150	1,193,820	1,285,440	2,782,770	2,379,590
Total Loss All Causes	1,930,500	1,385,000	2,242,200	2,433,600	4,172,700	3,818,600

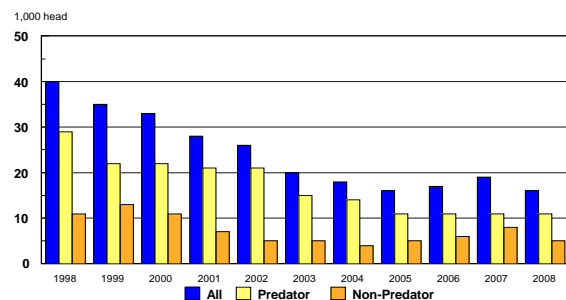
1/ Includes all lamb losses both before and after docking.

2/ Sheep value is based on a two-year average value per head of ewes 1+ years. Two-year average ewe value 2007-\$140.00, 2008-\$137.00. Lamb value per head is based on the annual average price received by farmers and ranchers for a 60 lb. lamb. Lamb value 2007-\$61.20, preliminary 2008-\$62.40

Lamb Losses Before Docking
All, Predator, and Non-Predator Causes
Wyoming



Lamb Losses After Docking
All, Predator, and Non-Predator Causes
Wyoming



OFFICIAL BUSINESS

Presorted Standard
Postage and Feed Paid
USDA
Permit No. G-38

Losses of Sheep and Lambs: Total by Cause within each Agricultural Statistics District, Wyoming 2008 1/

Cause of Loss	Agricultural Statistics District					State
	North West	North East	West	South Central	South East	
	Head					
Bears	300	200	400	100	—	1,000
Bobcats	—	100	—	—	200	300
Coyotes	1,300	3,800	4,300	1,400	3,600	14,400
Dogs	300	—	100	—	—	400
Eagles	100	500	100	100	800	1,600
Wolves	—	—	100	—	—	100
Foxes	200	200	600	100	600	1,700
Mountain Lions	300	500	—	—	—	800
Other Predators	—	—	100	100	—	200
Total Predators	2,500	5,300	5,700	1,800	5,200	20,500
Disease	1,500	500	600	400	600	3,600
Over-eating	300	400	100	300	100	1,200
Weather	1,200	4,200	3,200	1,100	4,500	14,200
Lambing Complications	700	1,000	1,000	400	500	3,600
Old Age	600	800	800	200	300	2,700
On Back	100	200	100	100	—	500
Poison	100	300	700	200	200	1,500
Theft	—	400	—	—	—	400
Other Non-Predators	300	100	100	—	300	800
Total Non-Predators	4,800	7,900	6,600	2,700	6,500	28,500
Total Loss All Causes	7,300	13,200	12,300	4,500	11,700	49,000

1/ Includes all lambs losses both before and after docking.

Losses of Sheep and Lambs: Percent by Cause within each Agricultural Statistics District, Wyoming 2008 1/

Cause of Loss	Agricultural Statistics District					State
	North West	North East	West	South Central	South East	
	Percent 2/					
Bears	4.1	1.5	3.3	2.2	—	2.0
Bobcats	—	0.8	—	—	1.7	0.6
Coyotes	17.8	28.8	35.0	31.1	30.8	29.4
Dogs	4.1	—	0.8	—	—	0.8
Eagles	1.4	3.8	0.8	2.2	6.8	3.3
Wolves	—	—	0.8	—	—	0.2
Fox	2.7	1.5	4.9	2.2	5.1	3.5
Mountain Lions	4.1	3.8	—	—	—	1.6
Other Predators	—	—	0.8	2.2	—	0.4
Total Predators	34.3	40.2	46.3	40.0	44.4	41.8
Disease	20.6	3.8	4.9	8.9	5.1	7.4
Over-eating	4.1	3.0	0.8	6.7	0.9	2.5
Weather	16.4	31.8	26.0	24.4	38.5	29.0
Lambing Complications	9.6	7.6	8.1	8.9	4.3	7.4
Old Age	8.2	6.1	6.5	4.4	2.6	5.5
On Back	1.4	1.5	0.8	2.2	—	1.0
Poison	1.4	2.3	5.7	4.4	1.7	3.1
Theft	—	3.0	—	—	—	0.8
All Other Causes	4.1	0.8	0.8	—	2.6	1.6
Total Non-Predators	65.8	59.9	53.7	60.0	55.6	58.2
Total Loss All Causes	100.0	100.0	100.0	100.0	100.0	100.0

1/ Includes all lambs losses both before and after docking.

2/ May not add due to rounding.