



New England Agricultural Statistics

a field office of the National Agricultural Statistics Service
United States Department of Agriculture

22 Bridge St, Third Floor
PO Box 1444
Concord, NH 03302

Aubrey R. Davis, Director
www.usda.gov/nass

603-224-9639
Fax: 603-225-1434
nass-nh@nass.usda.gov



Ag Review April 2005

Volume 25, Number 4

April 29, 2005

A special "THANK YOU" goes to New England producers and agri-businesses who have helped us by completing surveys via mail, telephone or personal interviews. This issue contains the results of monthly and quarterly surveys including Milk Production, Layer and Egg Production, Potato Stocks and Prices, and the March 2004 Agricultural Survey of Field Crop Acreage Intentions.

IN THIS ISSUE

Chickens: Layers and Eggs

Dairy Products

Field Crops: Corn, Barley, Oats, Hay, and Tobacco

Milk: Monthly Production and Price, Annual Production, Disposition, and Price

Potatoes: Stocks and Prices

POTATO STOCKS: Maine potato stocks on hand April 1, 2005, totaled 7.5 million hundredweight (cwt), 15 percent above 2004's April 1 holdings. Disappearance to April 1 in Maine totaled 11.7 million cwt, compared with 10.5 million cwt a year earlier. Storage accounted for 39 percent of Maine's total production, compared with 38 percent last year and the previous 5-year average of 37 percent. The price received for the 2004 potato crop for all sales from fresh market, processed, and seed averaged \$6.55 per cwt during February 2005, above the previous year's \$5.70 per cwt, but below the 5-year average of \$6.67 per cwt.

The **15 major potato States** held 130 million cwt of potatoes in storage April 1, 2005, up three percent from both last year and April 1, 2003. Potatoes in storage account for 32 percent of the 2004 fall storage States' production, one percentage point above last year. Disappearance of 274 million cwt of potatoes is down one percent from last year and three percent below two years ago. Shrink and loss, at 26.8 million cwt so far this season, is up six percent from last year and 11 percent above the same date in 2003. Processors in the nine major States have used 136 million cwt of potatoes this season, down one percent from a year ago and six percent below two years ago. Dehydrating usage accounts for 27.8 million cwt of the total processing, down eight percent from last year and 13 percent below the same date in 2003.

NEW ENGLAND FIELD CROP ACREAGE INTENTIONS FOR 2005: New England intentions for March 1, 2005 indicated farmers plan to reduce plantings of field corn in the region and increase acreage harvested for dry hay. The intentions survey conducted in March represents the acreage farmers intend to plant and/or harvest as of March 1. New England farmers expect to plant 186,000 acres of **field corn** in 2005, 5,000 acres less than previous year's plantings.

New England farm operators intend to harvest 616,000 acres of **dry hay** in 2005, compared with 605,000 acres harvested the previous year. **Oat** growers in Maine plan to seed 32,000 acres in 2005, a reduction of 2,000 acres from a year earlier. Maine's **barley** producers intend to seed 22,000 acres in 2005, compared with 23,000 acres planted in 2004. **Broadleaf tobacco** for harvest in Connecticut and Massachusetts in 2005 is forecast at 2,300 acres, down 70 acres from last year. Grower intentions placed 2005 **shade tobacco** acreage for harvest in the two States at 1,250 acres, 60 acres more than the previous year's harvested acreage.

UNITED STATES FIELD CROP ACREAGE INTENTIONS FOR 2005: **Corn** planted area for all purposes is estimated at 81.4 million acres, up one percent from 2004 and four percent above 2003. If realized, this would be largest corn acreage since 1985. Expected acreage is up from last year throughout much of the Corn Belt and southern Great Plains. However, growers in most States in the Delta, Southeast, and northern Great Plains intend to decrease their corn acreage as producers are switching to other more profitable crops due to low corn prices and high fuel and fertilizer costs. **Soybean** producers intend to plant 73.9 million acres in 2005, down two percent from last year's record high acreage. The largest acreage declines are in the Dakotas, where low soybean prices have some farmers shifting to other crops. Large declines in soybean acreage are also expected in the Delta and Southeast States. Acres seeded and to be seeded to **oats** for the 2005 crop year are expected to total 4.27 million acres, up four percent from last year's planted area. Acreage planted to oats is expected to increase or remain at the same level as 2004 in most states across the Great Plains. Iowa, New York, Texas, and Wyoming are each expecting an increase of 20,000 acres from last year. Growers intend to plant 3.97 million acres to **barley** in 2005, down 12 percent from last year and, if realized, the lowest since barley planted acreage estimates began in 1926. Expected acreage declined from last year in the four largest barley-producing States. Of the top 10 barley States, Minnesota is the only State with increased planting

intentions. North Dakota growers expect to plant 1.20 million acres, 400,000 acres below 2004 and, if realized, the fewest planted acres on record. Drought conditions and an expected decrease in malting barley contracts are the main reasons for the decrease in planting intentions. U.S. producers expect to harvest 62.9 million acres of **all hay** in 2005, up two percent from last year. The two States with the largest expected increases are New York, which is up 470,000 acres from last year, and South Dakota, which is up 300,000 acres. U.S. **all tobacco** area for harvest in 2005 is expected to be 319,860 acres, down 22 percent from both 2004 and 2003. If realized, this will be the lowest harvested acreage on record. The previous low of 369,000 acres occurred in 1868. Large decreases in flue-cured and light air-cured harvested acreage are expected as well as decreases in dark-air cured and all cigar types. However, a slight increase in acres to be harvested is expected for fire-cured. Acreage this year will be heavily impacted by the elimination of the tobacco quota program and price supports as farmers adjust to the tobacco buyout.

MILK PRODUCTION: Milk production in **Vermont** totaled 228 million pounds in March 2005, an increase of nearly three percent from March 2004. There were an estimated 143 thousand milk cows on Vermont farms during March 2005, unchanged from the previous month, and a decrease by 2,000 milk cows from the same month the previous year. Milk production per cow for the month averaged 1,595 pounds, an increase of 65 pounds from March 2004.

Milk production during the first quarter (January - March) of 2005 totaled 1.1 billion pounds in **New England**. There were an estimated 229 thousand milk cows on New England farms, a decrease of 2,000 head from the previous quarter and a decrease of 5,000 head from the same period a year

ago. Milk production per cow averaged 4,605 pounds for the first quarter of 2004.

Milk production in the **United States** during the first quarter of this year totaled 43 billion pounds. There were an estimated 9.0 million milk cows in the United States during the first quarter of the year, unchanged from the same period a year ago. The United States average quarterly rate was 4,807 pounds per cow for the first quarter of 2005.

ANNUAL MILK PRODUCTION AND VALUE: Milk production in **New England** during 2004 totaled 4.2 billion pounds, a decrease of three percent from 2003. The annual average number of milk cows in 2004 was 233,200 head, down four percent from the previous year. Annual production per cow averaged 18,034 pounds, which set a record high milk rate per cow in New England. Cash receipts from all milk sales in 2004 totaled \$717.8 million, an increase of 25 percent from 2003. New England dairy producers received an average of \$17.20 per hundredweight for all milk sold in 2004, an increase of \$3.88 per hundredweight above the previous year's average price.

Milk Production in the **United States** totaled 170 billion pounds in 2004, unchanged from the 2003 total. The annual average number of milk cows on the Nation's farms in 2004 was 9.01 million head, a decrease of less than one percent from the previous year's total. The annual average production rate per cow in 2004 was 18,957 pounds, an increase of 197 pounds per cow from the 2003 rate. Cash receipts from all milk sales during 2004 was \$27.4 billion, a 29 percent increase from the previous year's sales. The Nation's dairy farmers received an average return of \$16.13 per hundredweight, an increase of \$3.58 per hundredweight above the 2003 average price.

FALL POTATOES: Production and April 1 Stocks ^{1/}, 2004 - 2005

State	2003 Crop			2004 Crop		
	Production	Stocks April 1, 2004	Stocks as Percentage of Production	Production	Stocks April 1, 2005	Stocks as Percentage of Production
	1,000 Cwt		Percent	1,000 Cwt		Percent
California	3,528	1,000	28	3,876	900	23
Colorado	23,652	7,500	32	23,148	8,500	37
Idaho	123,180	46,000	37	131,970	52,000	39
Maine	17,030	6,500	38	19,220	7,500	39
Michigan	15,015	3,200	21	13,650	2,700	20
Minnesota	22,330	7,600	34	18,920	6,500	34
Montana	3,339	2,300	69	3,551	2,000	56
Nebraska	9,744	2/		9,288	2/	
New York	6,510	300	5	5,184	320	6
North Dakota	27,440	11,200	41	26,765	10,300	38
Ohio	1,097	2/		1,080	2/	
Oregon	20,991	8,400	40	19,775	6,200	31
Pennsylvania	3,375	400	12	2,640	600	23
Washington	93,150	21,500	23	93,810	22,000	23
Wisconsin	32,800	7,600	23	30,450	7,700	25
Other States		2,610			2,400	
15 STATES	403,181	126,110	31	403,327	129,620	32

^{1/} Stocks include processor holdings and seed to plant the 2005 crop; 2004 crop seed usage for all seasons totaled 26.4 million cwt.

^{2/} Combined into "Other States."

SOURCE: **Potato Stocks**, 3:00 p.m., April 14, 2005, National Agricultural Statistics Service, USDA.

MAINE POTATOES: Prices Received, 2000 - 2004 Crop Years

Crop Year	Prices Received ^{1/} by Farmers for All Potatoes, Monthly and Marketing Year Average											
	Aug	Sept	Oct	Nov	Dec	Jan	Feb	Mar	April	May	June	Market Year Average
	Dollars per Cwt											
2000	5.80	5.45	5.50	5.55	5.60	5.50	5.90	6.20	6.80	7.30	7.00	6.15
2001	6.20	5.70	6.05	6.65	7.50	7.75	8.30	8.65	9.45	8.05	7.80	7.65
2002	5.75	5.45	5.60	6.65	6.95	7.10	7.10	7.45	8.10	8.15	7.40	7.05
2003	6.15	5.25	5.45	5.90	5.75	5.85	5.70	6.10	6.30	6.70	6.90	6.05
2004 ^{2/}	5.95	5.15	5.70	6.15	6.35	5.95	6.55	6.85				

^{1/} Average price of potatoes sold for fresh market, processing, seed, and feed.

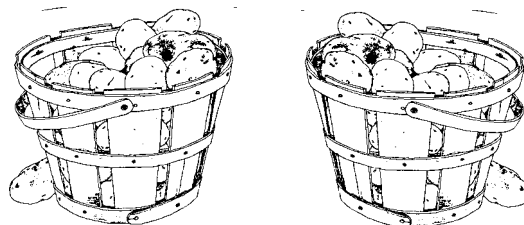
^{2/} Most recent monthly price is a preliminary mid-month forecast.

SOURCE: **Agricultural Prices**, 3:00 p.m., March 30, 2005, National Agricultural Statistics Service, USDA.

POTATOES: Shrinkage and Loss, 15 Fall Storage States, 2001 - 2004

Crop Year	To Dec 1	To Jan 1	To Feb 1	To Mar 1	To Apr 1	To May 1	Total Jun 1	Season
	Million Cwt							
2001	14.8	17.4	19.8	21.8	23.6	25.1	26.7	29.3
2002	15.5	18.2	20.5	22.4	24.2	25.8	27.2	29.0
2003	15.0	17.4	20.5	22.6	25.4	27.5	29.9	33.0
2004	16.6	20.0	22.5	24.6	26.8			

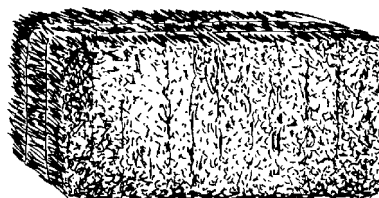
SOURCE: **Potato Stocks**, 3:00 p.m., April 14, 2005, National Agricultural Statistics Service, USDA.



FIELD CORN and DRY HAY: Acreage, 2004 - 2005

State	Corn Planted for All Purposes			All Dry Hay Harvested		
	2004	2005 Intentions as of Mar 1	2005 as Percentage of 2004	2004	2005 Intentions as of Mar 1	2005 as Percentage of 2004
	1,000 Acres		Percent	1,000 Acres		Percent
Connecticut	31	32	103	66	70	106
Maine	28	28	100	155	160	103
Massachusetts	20	20	100	88	90	102
New Hampshire	15	14	93	57	57	100
Rhode Island	2	2	100	9	9	100
Vermont	95	90	95	230	230	100
NEW ENGLAND	191	186	97	605	616	102
UNITED STATES	80,930	81,413	101	61,916	62,940	102

SOURCE: *Prospective Plantings*, 8:30 a.m., March 31, 2005, National Agricultural Statistics Service, USDA.



OATS and BARLEY: Area Planted, 2003 - 2005

State	Oats Planted for All Purposes				Barley Planted for All Purposes			
	2003	2004	2005 Intentions as of Mar 1	2005 as Percentage of 2004	2003	2004	2005 Intentions as of Mar 1	2005 as Percentage of 2004
	1,000 Acres			Percent	1,000 Acres			Percent
Maine	27	34	32	94	28	23	22	96
UNITED STATES	4,597	4,085	4,267	104	5,348	4,527	3,974	88

SOURCE: *Prospective Plantings*, 8:30 a.m., March 31, 2005 National Agricultural Statistics Service, USDA.

TOBACCO: Area Harvested by Type, 2003 - 2005

State and Type	Area Harvested			2005 as Percentage of 2004
	2003	2004	2005 ^{1/} Intentions as of Mar 1	
	Acres			Percent
Broadleaf (Type 51)				
Connecticut	1,400	1,450	1,350	93
Massachusetts	970	920	950	103
CT and MA Total	2,370	2,370	2,300	97
Shade (Type 61)				
Connecticut	780	890	950	107
Massachusetts	280	300	300	100
CT and MA Total	1,060	1,190	1,250	105
UNITED STATES (All Types)	411,150	409,060	319,860	78

^{1/} Area intended for harvest in 2005 as indicated by reports from farmers.

SOURCE: *Prospective Plantings*, 8:30 a.m., March 31, 2005, National Agricultural Statistics Service, USDA.

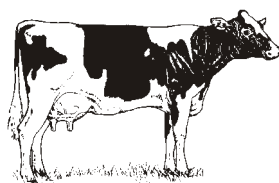
VERMONT MILK: Prices Received, 2000 - 2005

Year	Prices Received ^{1/} by Farmers for Milk Sold												Annual Average
	Jan	Feb	Mar	Apr	May	Jun	Jul	Aug	Sept	Oct	Nov	Dec	
	Price per Cwt.												
2000	13.40	13.40	13.50	13.40	13.50	13.80	13.50	13.80	14.00	14.00	14.30	14.60	13.80
2001	13.70	14.30	15.00	15.40	16.20	16.80	17.00	17.30	17.90	16.40	15.80	14.10	15.80
2002	14.20	13.80	13.30	13.10	12.70	12.10	11.60	11.70	12.00	12.50	12.50	12.40	12.70
2003	12.30	11.90	11.50	11.40	11.50	11.50	12.10	13.40	15.00	15.80	15.50	14.80	13.00
2004	14.00	14.40	16.20	17.80	20.10	19.80	17.60	15.50	16.30	16.60	17.00	17.20	16.90
2005 ^{2/}	16.70	15.80	16.00										

^{1/} Before deductions for hauling. Includes quality, quantity, and other premiums. Excludes hauling subsidies.

^{2/} Most recent monthly price is a preliminary mid-month forecast.

SOURCE: **Agricultural Prices**, 3:00 p.m., March 30, 2005 National Agricultural Statistics Service, USDA.



MONTHLY MILK: Number of Cows and Production, March 2005 with Comparisons

State	Milk Cows ^{1/}			Production per Cow			Production		
	Mar 2004	Feb 2005	Mar 2005	Mar 2004	Feb 2005	Mar 2005	Mar 2004	Feb 2005	Mar 2005
	1,000 Head			Pounds			Million Pounds		
Vermont	145	143	143	1,530	1,430	1,595	222	204	228
New York	660	650	651	1,510	1,415	1,595	997	920	1,038
Pennsylvania	564	560	560	1,570	1,420	1,600	885	795	896
UNITED STATES ^{2/}	8,059	8,076	8,097	1,661	1,519	1,704	13,387	12,270	13,799

^{1/} Average number for month, including dry cows.

^{2/} United States includes 23 major States: AZ, CA, CO, FL, ID, IL, IN, IA, KS, KY, MI, MN, MO, NM, NY, OH, OR, PA, TX, VT, VA, WA, and WI.

SOURCE: **Milk Production**, 3:00 p.m., April 15, 2005, National Agricultural Statistics Service, USDA.

QUARTERLY MILK: Number of Cows and Production, January - March 2005 with Comparisons

State	Milk Cows ^{1/}			Production per Cow			Production		
	Jan - Mar 2004	Oct - Dec 2004	Jan - Mar 2005	Jan - Mar 2004	Oct - Dec 2004	Jan - Mar 2005	Jan - Mar 2004	Oct - Dec 2004	Jan - Mar 2005
	1,000 Head			Pounds			Million Pounds		
Connecticut	21.0	20.0	20.0	4,850	4,770	4,930	102.0	95.0	99.0
Maine	34.0	33.0	32.0	4,450	4,490	4,580	151.0	148.0	147.0
Massachusetts	17.0	17.0	17.0	4,380	4,270	4,320	74.0	73.0	73.0
New Hampshire	16.0	16.0	16.0	4,780	4,620	4,720	76.0	74.0	76.0
Rhode Island	1.2	1.1	1.0	4,300	4,130	4,450	5.2	4.5	4.5
Vermont	145.0	144.0	143.0	4,490	4,389	4,580	651.0	632.0	655.0
NEW ENGLAND	234.2	231.1	229.0	4,523	4,442	4,605	1,059.2	1,026.5	1,054.5
UNITED STATES	8,993.0	9,019.0	8,995.0	4,755	4,655	4,807	42,759.0	41,983.0	43,238.0

^{1/} Average number for quarter, including dry cows.

SOURCE: **Milk Production**, 3:00 p.m., April 15, 2005, National Agricultural Statistics Service, USDA.

ANNUAL MILK: Production and Value, 2004

State	Average Number of Milk Cows	Production of Milk and Milkfat					Value of Milk Produced ^{1/}
		Per Milk Cow		Percentage of Fat in All Milk Produced	Total		
		Milk	Milkfat		Milk	Milkfat	
	1,000 Head	Pounds	Pounds	Percent	Million Pounds	Million Pounds	1,000 Dollars
Connecticut	20.0	19,600	717	3.66	392	14.3	67,816
Maine	34.0	18,000	666	3.7	612	22.6	110,160
Massachusetts	17.0	17,412	648	3.72	296	11.0	51,800
New Hampshire	16.0	18,875	706	3.74	302	11.3	53,454
Rhode Island	1.2	16,333	622	3.81	19.6	0.7	3,469
Vermont	145.0	17,821	665	3.73	2,584	96.4	436,696
NEW ENGLAND	233.2	18,034	670	3.72	4,205.6	156.3	723,395
UNITED STATES	9,010.0	18,957	696	3.67	170,805	6,265.8	27,549,413

^{1/} Value at average returns per 100 pounds of milk in combined marketings of milk and cream. Value equals cash receipts from marketings of milk and cream plus value of milk used for home consumption plus value of milk fed to calves.

SOURCE: *Milk Production, Disposition, and Income*, 3:00 p.m., April 28, 2005, National Agricultural Statistics Service, USDA.

ANNUAL MILK: Milk and Cream Marketings, Price and Income, 2004

State	Milk Utilized ^{1/}	Percent Fluid Grade ^{2/}	Average Returns ^{3/}		Cash Receipts from Marketings
			Per Cwt Milk	Per Lb Milkfat	
			Dollars	Dollars	
	Million Pounds	Percent	Dollars	Dollars	1,000 Dollars
Connecticut	388.0	100	17.30	4.73	67,124
Maine	607.0	100	18.00	4.86	109,260
Massachusetts	293.0	100	17.50	4.70	51,275
New Hampshire	299.0	100	17.70	4.73	52,923
Rhode Island	19.4	100	17.70	4.65	3,434
Vermont	2,567.0	100	16.90	4.53	433,823
NEW ENGLAND	4,173.4	100	17.20	4.62	717,839
UNITED STATES	169,699.0	98	16.13	4.40	27,367,858

^{1/} Milk sold to plants and dealers as whole milk and equivalent amounts of milk for cream. Includes milk produced by dealers' own herds and small amounts sold directly to consumers. Also includes milk produced by institutional herds.

^{2/} Percentage of milk sold that is eligible for fluid use (grade A in most States). Includes fluid-grade milk used in manufacturing dairy products.

^{3/} Cash receipts divided by milk or milkfat in combined marketings.

SOURCE: *Milk Production, Disposition, and Income*, 3:00 p.m., April 28, 2005, National Agricultural Statistics Service, USDA.

ANNUAL MILK: Milk Used Where Produced and Gross Producer Income, 2004

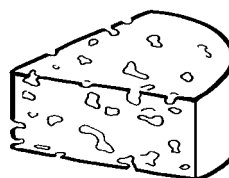
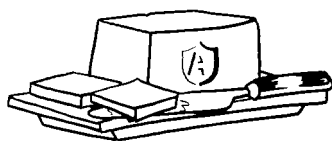
State	Milk Used Where Produced				Gross Producer Income ^{3/}
	Total	Fed to Calves ^{1/}	Used for Milk, Cream and Butter (Home Consumption)		
			Milk Utilized	Value ^{2/}	
	Million Pounds	Million Pounds	Million Pounds	1,000 Dollars	1,000 Dollars
Connecticut	4.0	3.5	0.5	87	67,211
Maine	5.0	4.5	0.5	90	109,350
Massachusetts	3.0	2.5	0.5	88	51,363
New Hampshire	3.0	2.5	0.5	89	53,012
Rhode Island	0.2	0.2	--	--	3,434
Vermont	17.0	15.0	2.0	338	434,161
NEW ENGLAND	32.2	28.2	4.0	692	718,531
UNITED STATES	1,105.0	956.0	149.0	24,414	27,392,272

^{1/} Excludes milk sucked by calves.

^{2/} Value at average returns per 100 pounds of milk in combined marketings of milk and cream.

^{3/} Cash receipts from marketings of milk and cream plus value of milk used for home consumption.

SOURCE: *Milk Production, Disposition, and Income*, 3:00 p.m., April 28, 2005, National Agricultural Statistics Service, USDA.



MONTHLY DAIRY PRODUCTS: New England Production, February 2005 with Comparisons

Product	February 2004	January 2005	February 2005	February 2005 as percent of:	
				February 2004	January 2005
	1,000 Pounds			Percent	
Butter	2,915	4,525	3,652	125	81
American Type Cheese ^{1/}	5,780	6,155	4,883	84	79
Mozzarella Cheese	5,771	5,971	4,694	81	79
Other Italian Cheese ^{2/}	752	1,061	803	107	76
Cottage Cheese ^{3/}	610	532	581	95	109
	1,000 Gallons			Percent	
Ice Cream, Hard	6,833	7,919	6,860	100	87
Low Fat Ice Cream, Hard	683	1,053	659	96	63
Milk Sherbet, Hard	179	206	183	102	89

^{1/} American Type Cheese includes Cheddars, Colby, Monterey and Jack.

^{2/} Includes all Italian cheese except Mozzarella.

^{3/} Creamed and lowfat.

SOURCE of NATIONAL PRODUCTION: *Dairy Products*, 3:00 p.m., April 4, 2005, National Agricultural Statistics Service, USDA.



MONTHLY CHICKENS: Layers and Egg Production, March, 2004 - 2005

State	Table Egg Layers in Flocks 30,000 and Above		All Layers ^{1/}		Eggs per 100 for All Layers ^{1/}		Egg Production from All Layers ^{1/}	
	March 2004	March 2005	March 2004	March 2005	March 2004	March 2005	March 2004	March 2005
	1,000 Birds		1,000 Birds		Number		Million Eggs	
Connecticut	2,775	3,033	2,827	3,091	2,441	2,329	69	72
Maine	3,959	2,915	4,002	2,975	2,299	1,076	92	32
UNITED STATES	276,016	281,626	341,700	347,255	2,209	2,225	7,547	7,726

^{1/} Includes all layers and eggs produced in both table egg and hatching egg flocks regardless of size.

SOURCE: *Chickens and Eggs*, 3:00 p.m., April 22, 2005, National Agricultural Statistics Service, USDA.

This is a monthly summary of New England agricultural statistics taken from nationwide reports issued by USDA's National Agricultural Statistics Service.

All National reports and State newsletters are available on the Internet at: <http://www.usda.gov/nass/>.

National Reports can be ordered by calling 1-800-999-6779.

How can you get these reports electronically?

* For free National e-mail reports, send a message to: **usda-reports@usda.mannlib.cornell.edu**
and in the body, type: **lists**

* For free State newsletters, such as this, send a message to: **listserv@newsbox.usda.gov**
and in the body, type: **subscribe new-eng-all-reports** OR **lists** for other States.

AUBREY R. DAVIS, Director

GERALD D. TILLMAN, Deputy Director

STATISTICIANS: Robin Helrich, Dianne Johnson, Angela Considine, Sherry Deane, Dave Mikelson, John Miyares, Travis Averill

ADDRESS SERVICE REQUESTED

PERMIT NO. G-38
USDA
POSTAGE & FEES PAID
FIRST CLASS
PRESORTED

UNITED STATES DEPARTMENT OF AGRICULTURE
NATIONAL AGRICULTURAL STATISTICS SERVICE
POST OFFICE BOX 1444
CONCORD NH 03302-1444