



United States Department of Agriculture
National Agricultural Statistics Service



JUNE CROP PRODUCTION

Executive Summary

JUNE 12, 2013

12:00 PM



Contents



Field Crops	Fruit	Specialty Crops
Winter Wheat	Citrus	Hops
Sugarcane*		Maple Syrup
Sugarbeets*		
Sweet Potatoes*		

***2012 Crop Year Revisions**



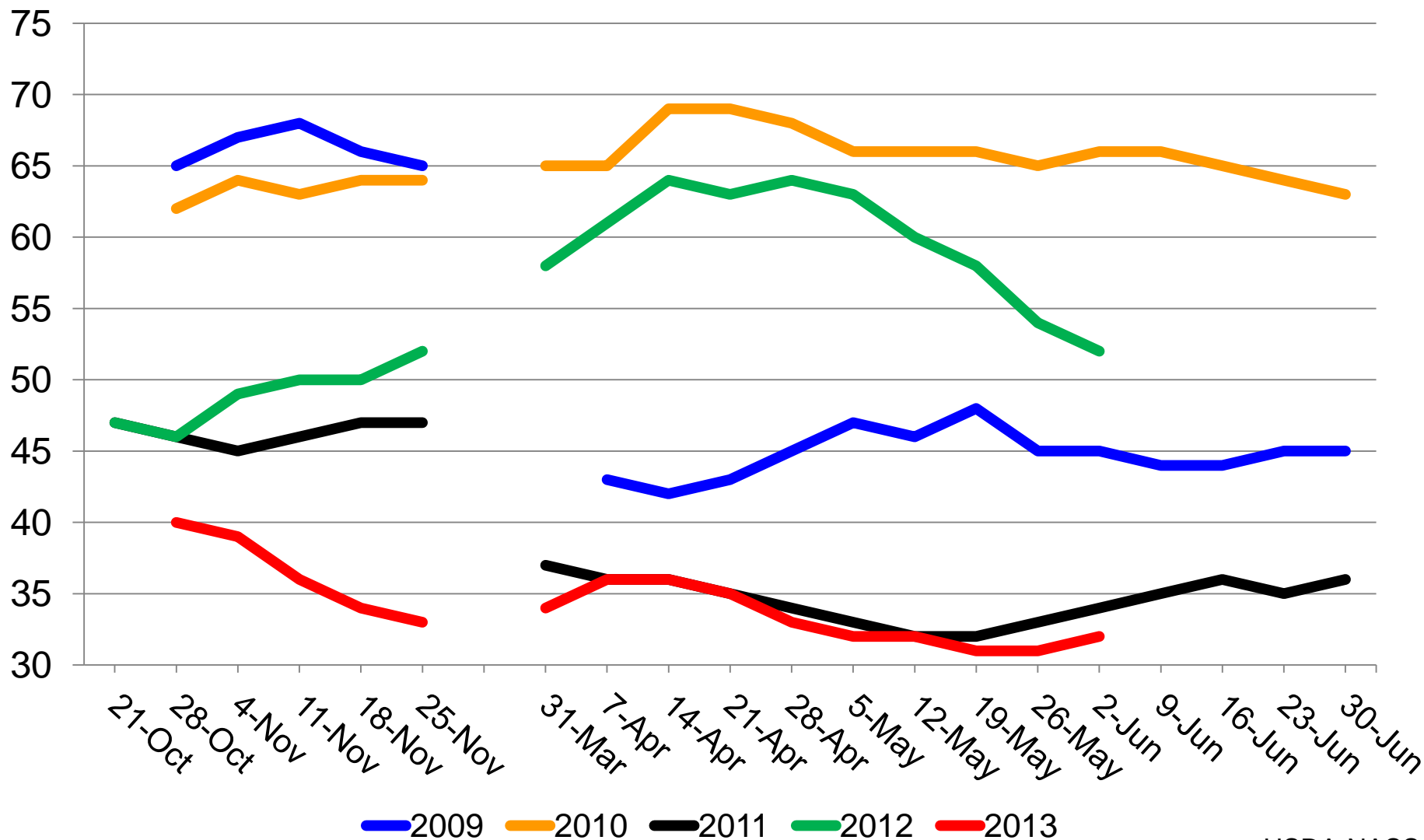
Survey Overview

	Ag Yield	Objective Yield
Survey Type	Farmer Reported	Field Measurement
Crops Included	Winter & Durum Wheat	Winter Wheat
States	30	10
Sample Size	~5,300	1,040
Collection Period	May 28 – June 6	May 25 – June 1

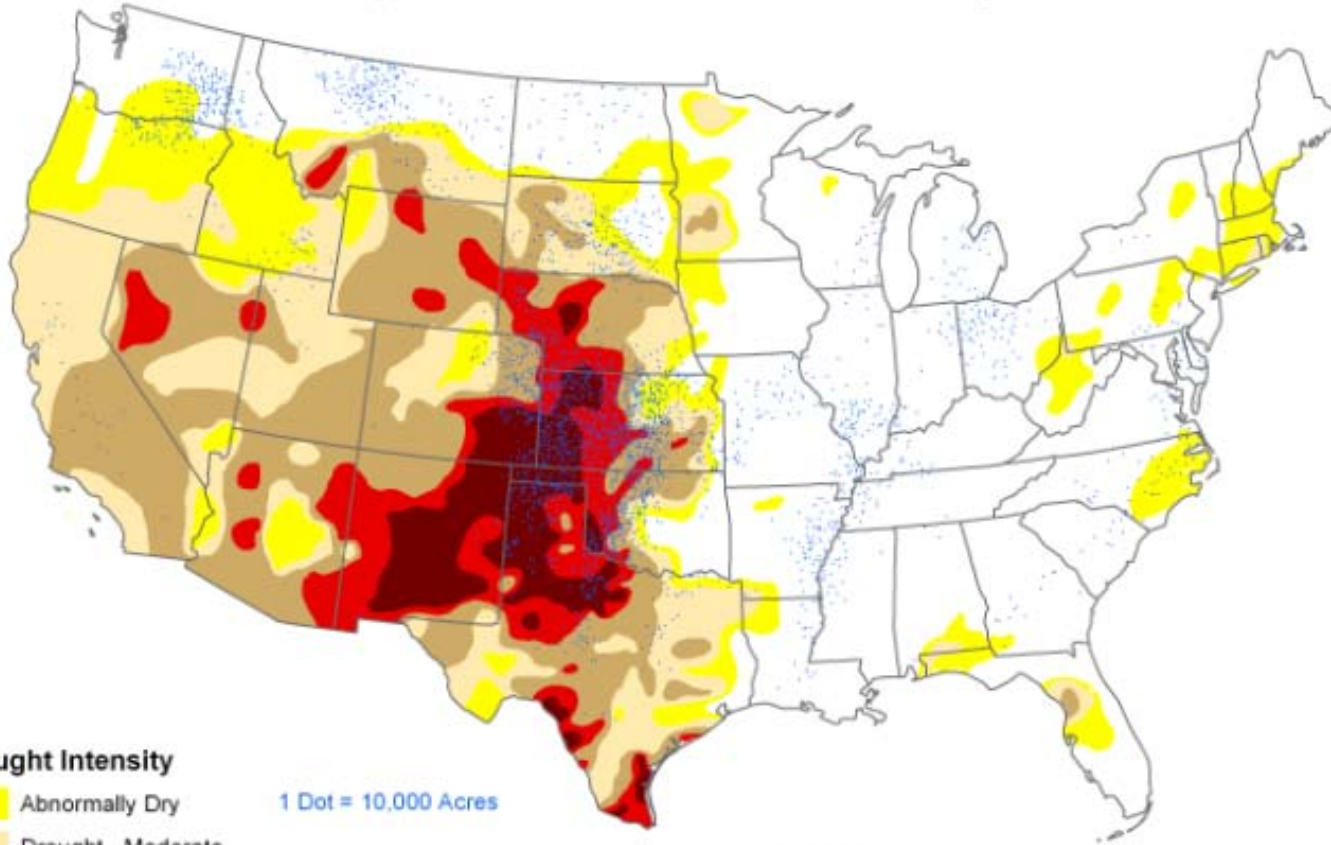


Winter Wheat Condition

Percent Rated Good to Excellent



U.S. Drought Intensity For May 28, 2013 Compared With Winter Wheat Acreage



Drought Intensity

- Abnormally Dry
- Drought - Moderate
- Drought - Severe
- Drought - Extreme
- Drought - Exceptional

1 Dot = 10,000 Acres

Sources:

2007 Census of Agriculture, USDA-NASS
 U.S. Drought Monitor (<http://drought.unl.edu/dm/monitor.html>)
 National Drought Mitigation Center
 U.S. Department of Agriculture
 National Oceanic and Atmospheric Administration



June 2013 Crop Production

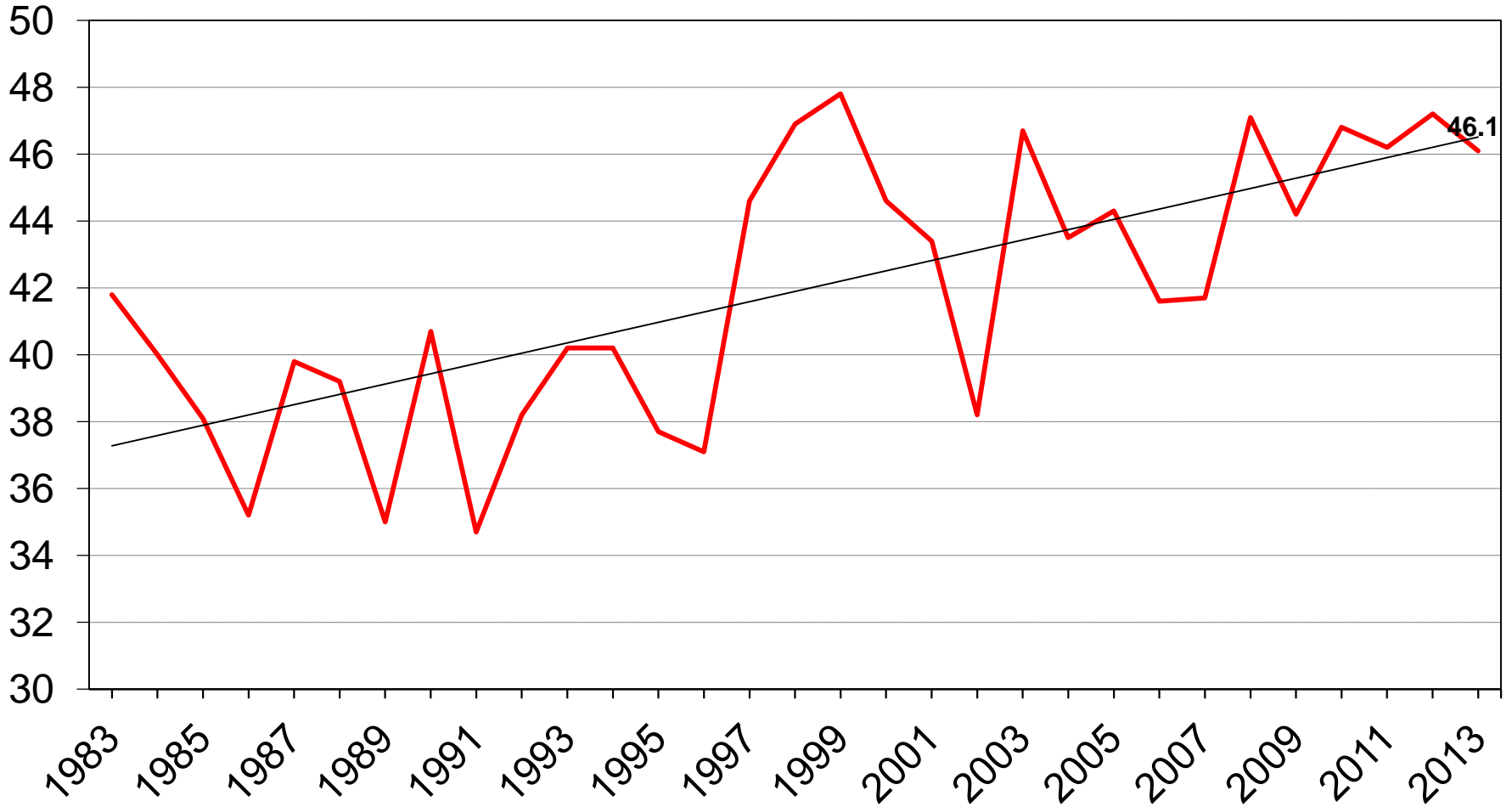
Crop	Unit	June 2013	% Chg from Prev Forecast	% Chg from Prev Season
Winter Wheat:				
Harvested	Mil Ac	32.7	NC	- 6.1
Yield	Bu/Ac	46.1	+ 1.5	- 2.3
Production	Bil Bu	1.51	+ 1.6	- 8.3
Prod By Class:				
Hard Red	Mil Bu	781	+ 1.7	- 22.2
Soft Red	Mil Bu	509	+ 1.6	+ 21.2
White	Mil Bu	219	+ 1.0	-1.2



U.S. Winter Wheat Yield



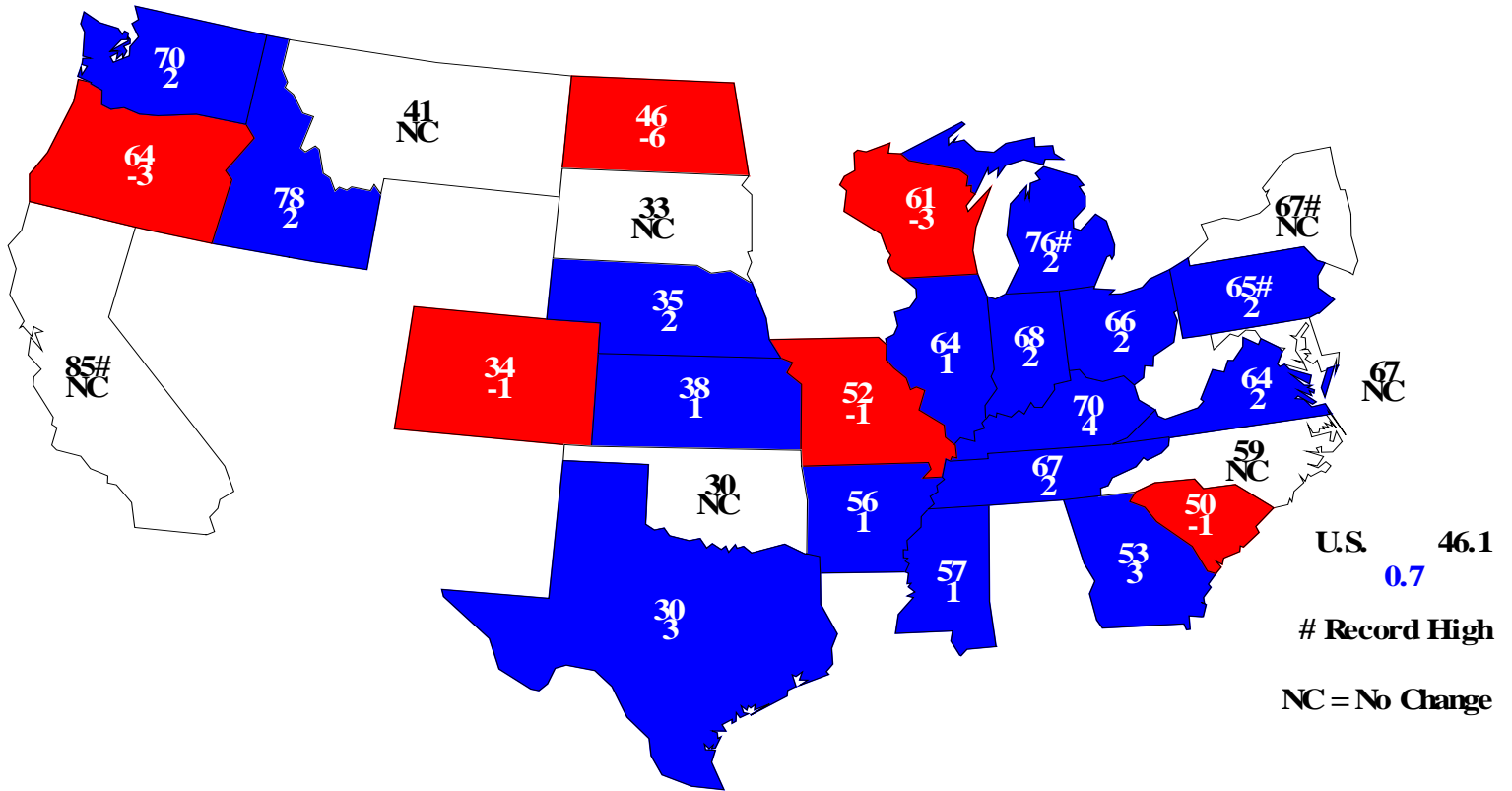
Bushels/acre





Winter Wheat Yield - June 1, 2013

Bushels and Change From Previous Month



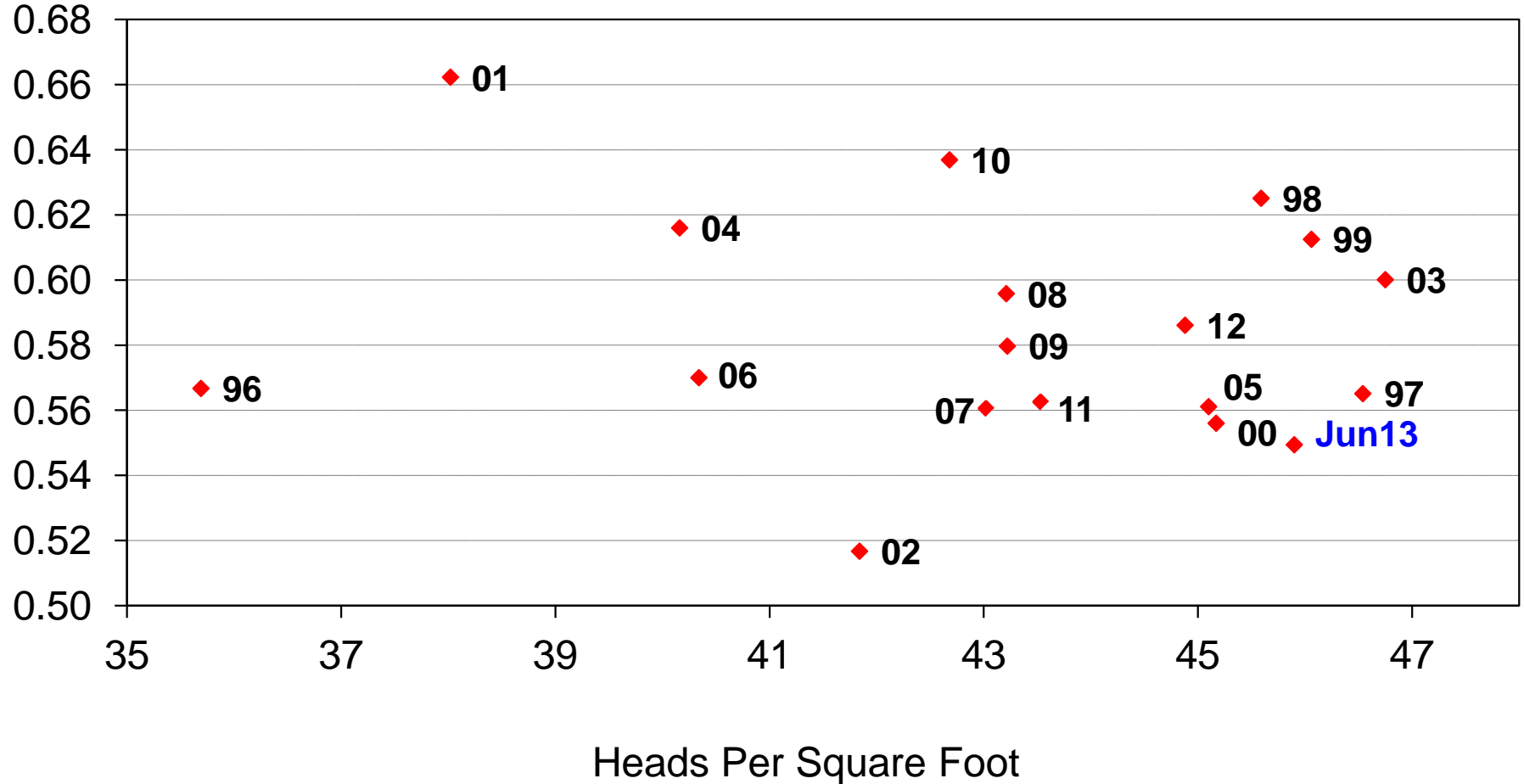


10-State Winter Wheat Region

Derived Head Weight vs Heads Per Square Foot



Grams/head





June 2013 Crop Production

Crop	Unit	June 2013	% Change from Prev Forecast	% Change from Prev Season
Oranges	Mil Tons	8.42	- 2.1	- 6.5
Grapefruit	Mil Tons	1.17	+ 0.3	+ 1.0
Tangerines and Mandarins	Thou Tons	707	- 0.4	+ 9.1
Tangelos	Thou Tons	45.0	NC	- 13.5



June 2013 Crop Production



Crop	Unit	June 2013	% Change from Prev Season
Maple Syrup	Mil Gal	3.25	+ 70.5
Hops	Thou Ac	35.0	+ 9.7



2012 Revisions – Sugar Crops

Crop	Unit	June 2013	% Chg from Prev Estimate	% Chg from Prev Season
All Sugarcane:				
Harvested	Thou Ac	902	+ 0.7	+ 3.4
Yield	Tons/Ac	35.7	- 0.6	+ 6.6
Production	Mil Tons	32.2	+ 0.1	+ 10.3
Sugarbeets:				
Harvested	Mil Ac	1.20	NC	- 0.7
Yield	Tons/Ac	29.3	NC	+ 23.1
Production	Mil Tons	35.2	NC	+ 21.9



2012 Revisions – Sweet Potatoes

Crop	Unit	June 2013	% Chg from Prev Estimate	% Chg from Prev Season
Sweet Potatoes:				
Harvested	Thou Ac	127	NC	- 2.4
Yield	Cwt/Ac	209	NC	+ 0.5
Production	Mil Cwt	26.5	NC	- 1.8



United States Department of Agriculture
National Agricultural Statistics Service

Upcoming Reports

- | | |
|---------|--|
| June 27 | Agricultural Prices |
| June 28 | Acreage
Grain Stocks
Quarterly Hogs and Pigs |
| July 11 | Crop Production |



United States Department of Agriculture
National Agricultural Statistics Service



All Reports Available At

www.nass.usda.gov

For Questions

202-720-2127

800-727-9540

nass@nass.usda.gov