

United States Department of Agriculture
National Agricultural Statistics Service



**CROP PRODUCTION – ANNUAL
GRAIN STOCKS
RICE STOCKS
WINTER WHEAT SEEDINGS
COTTON GINNINGS
JANUARY CROP PRODUCTION**

Executive Summary

January 10, 2014

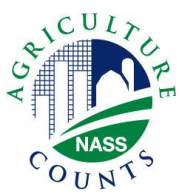
12:00 PM



Contents

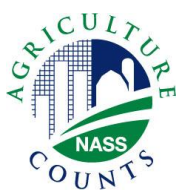


Field Crops	Stocks	Fruits/Nuts
Planted Acres	Corn	Citrus
Harvested Acres	Soybeans	
Yield	Cotton	
Production	Sorghum	
Winter Wheat Seedings	Rice	
	Hay	
	All Wheat	



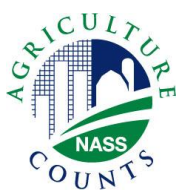
Survey Overview

	December Ag Survey
Survey Type	Farmer Reported
Collection Method	Mail, Phone, Internet, Personal Interview
Crops Included	Field Crops
States	All except HI
Sample Size	82,403
Collection Period	Nov. 29 – Dec. 17



U.S. Principal Crops Planted

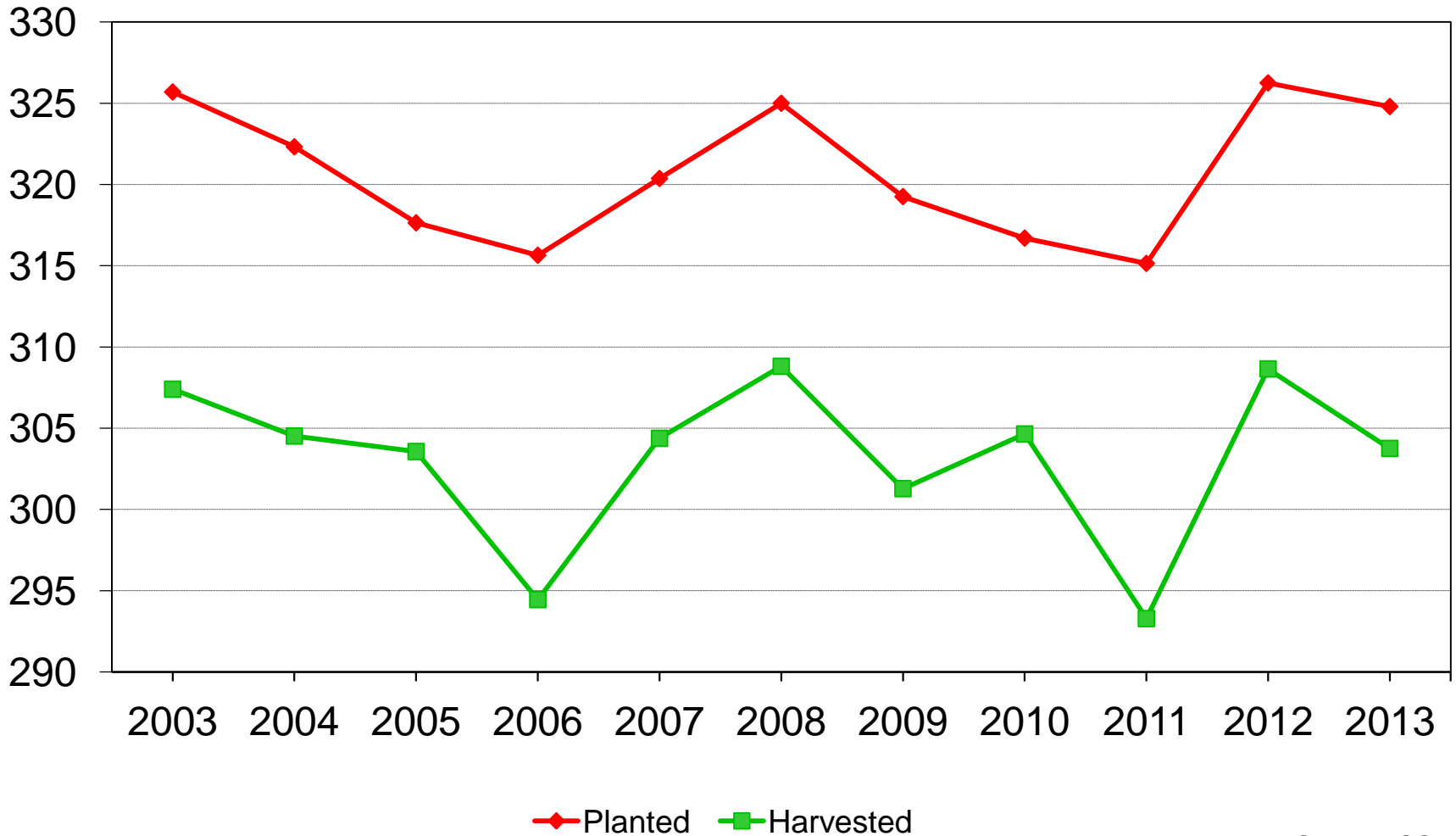
Year	Principal Crops	Change from Previous Year
<i>---Million acres---</i>		
2004	322.3	- 3.4
2005	317.6	- 4.7
2006	315.6	- 2.0
2007	320.4	+4.7
2008	325.0	+4.6
2009	319.3	- 5.7
2010	316.7	- 2.6
2011	315.1	- 1.6
2012	326.3	+11.2
2013	324.8	- 1.5



U.S. Principal Crop Acres



Million acres



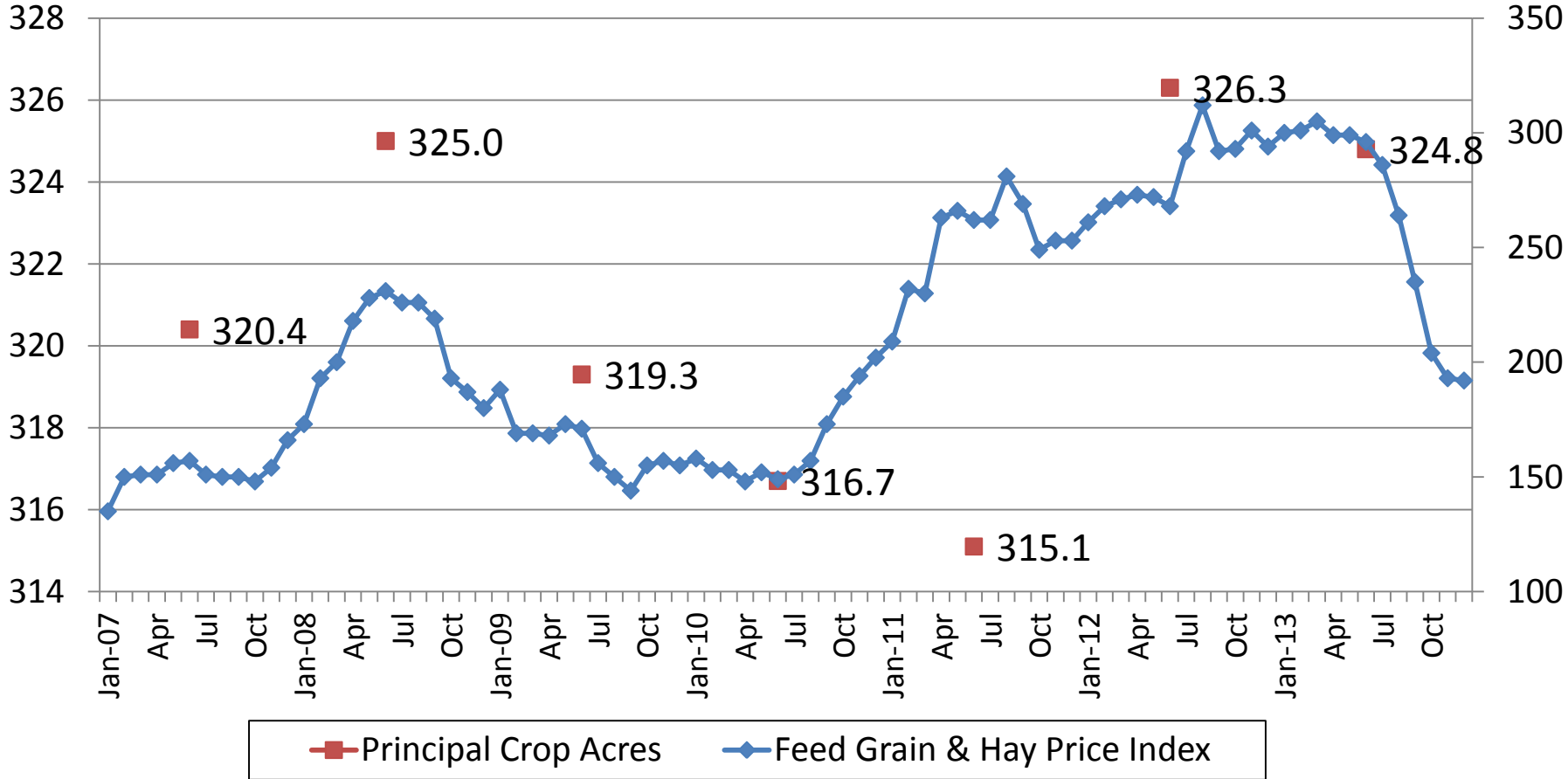


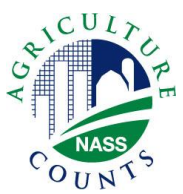
Feed Grain & Hay Price Index and Principal Crop Acres (2007-2013)



Percent
(1990-92=100)

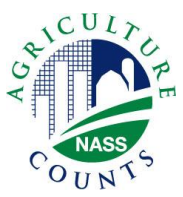
Million Acres





Crop Production 2013 Annual

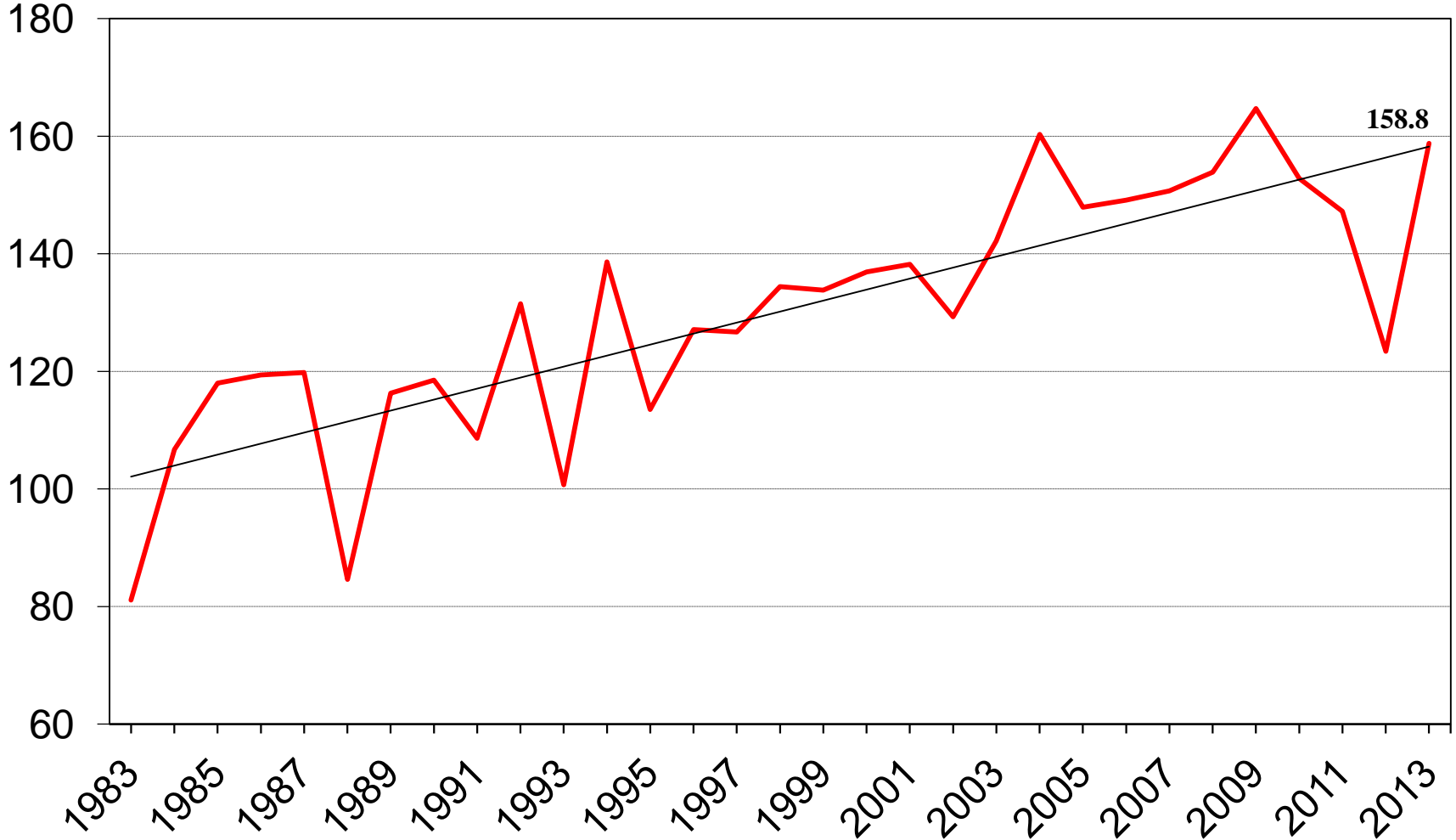
Crop	Unit	2013	% Change from Previous Forecast	% Change from Previous Season
Corn				
Planted	Mil Ac	95.4	+<0.1	-1.8
Harvested	Mil Ac	87.7	+0.5	+0.3
Yield	Bu/Ac	158.8	-1.0	+28.7
Production	Bil Bu	13.9	-0.5	+29.2
Dec Stocks	Bil Bu	10.4	---	+29.8



U.S. Corn Yield



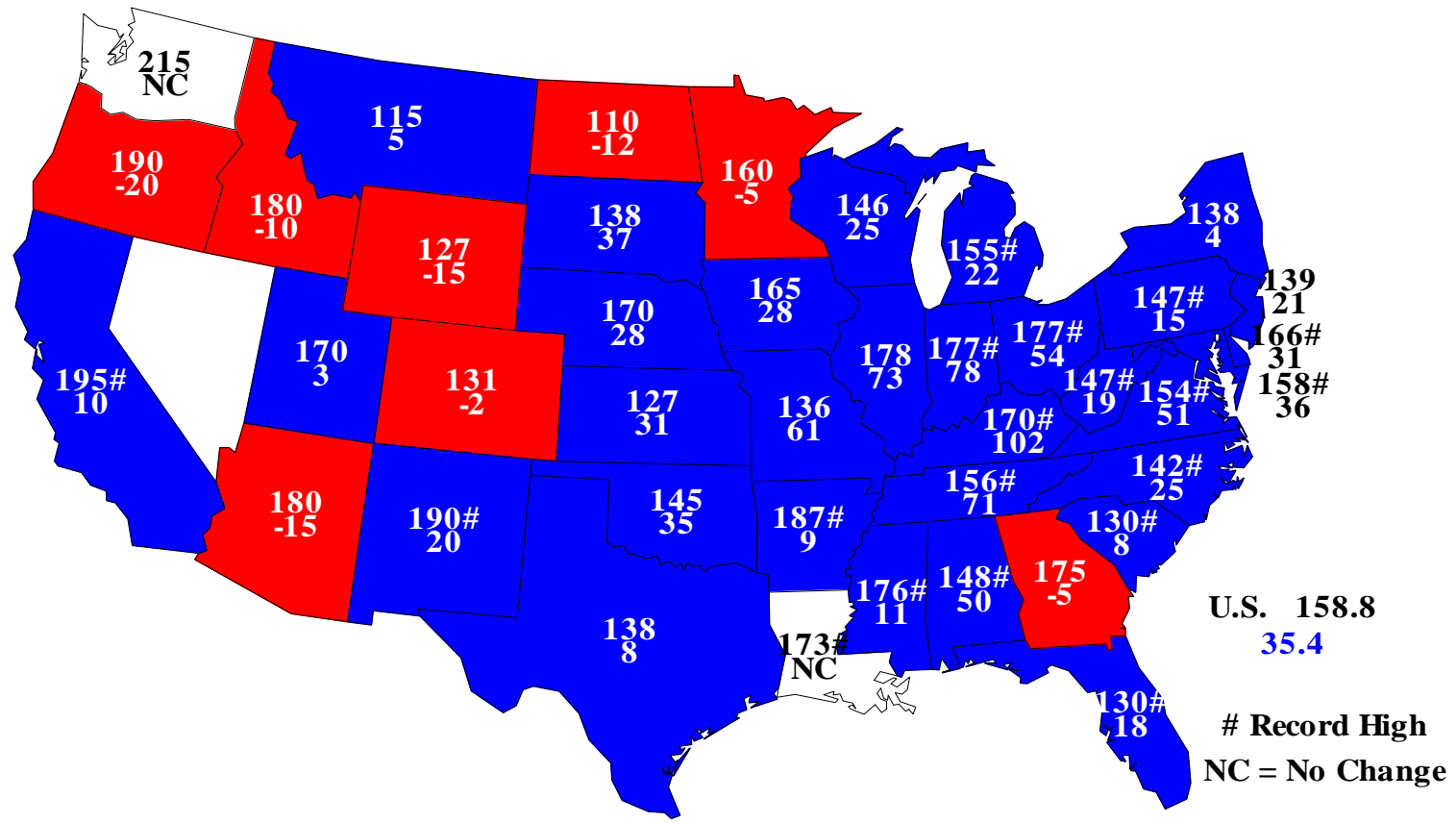
Bushels/acre





Corn for Grain Yields, 2013

Bushels and Change From Previous Year



U.S. 158.8
35.4

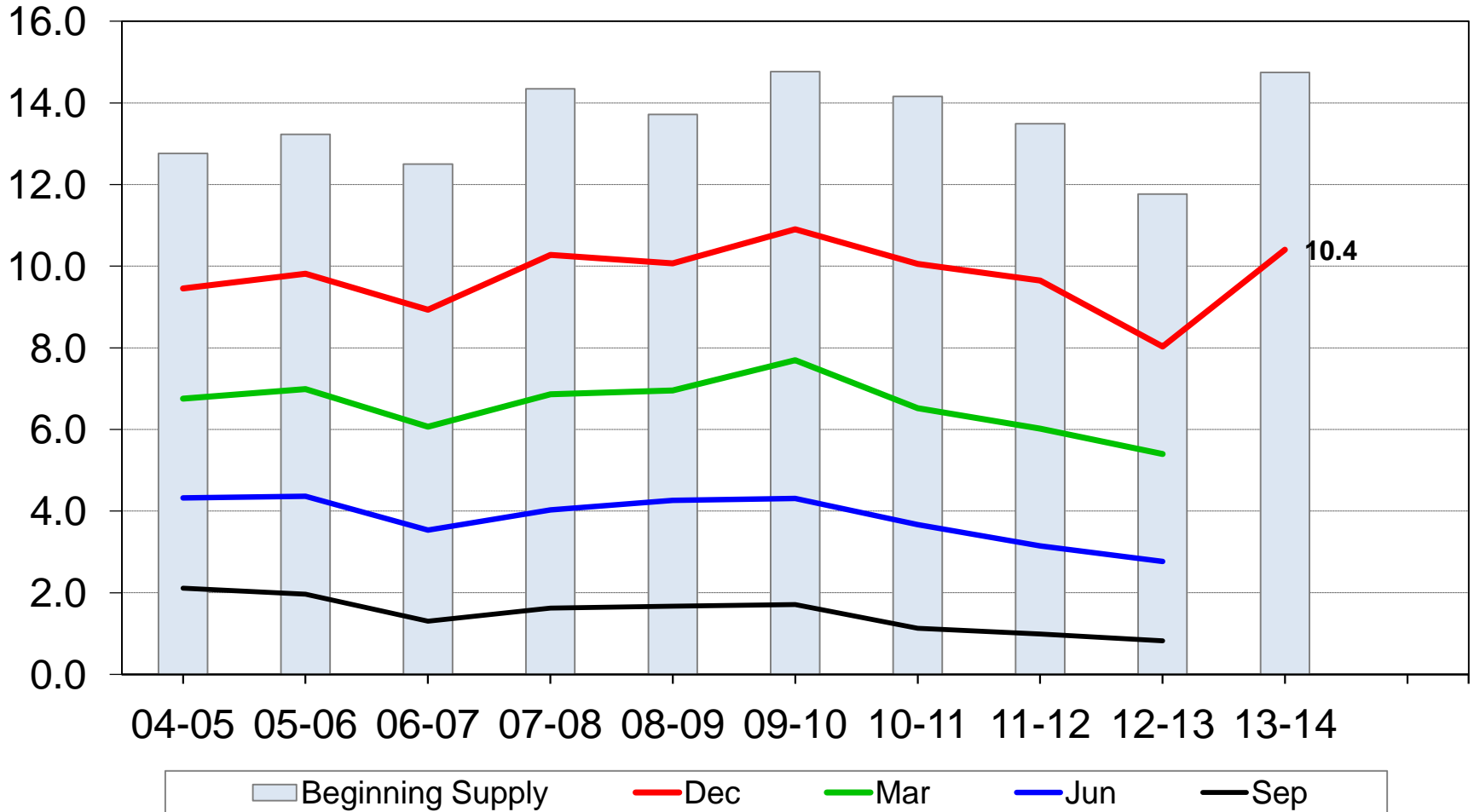
Record High
NC = No Change

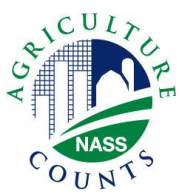


U.S. Corn Stocks



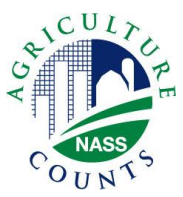
Billion bushels





Crop Production 2013 Annual

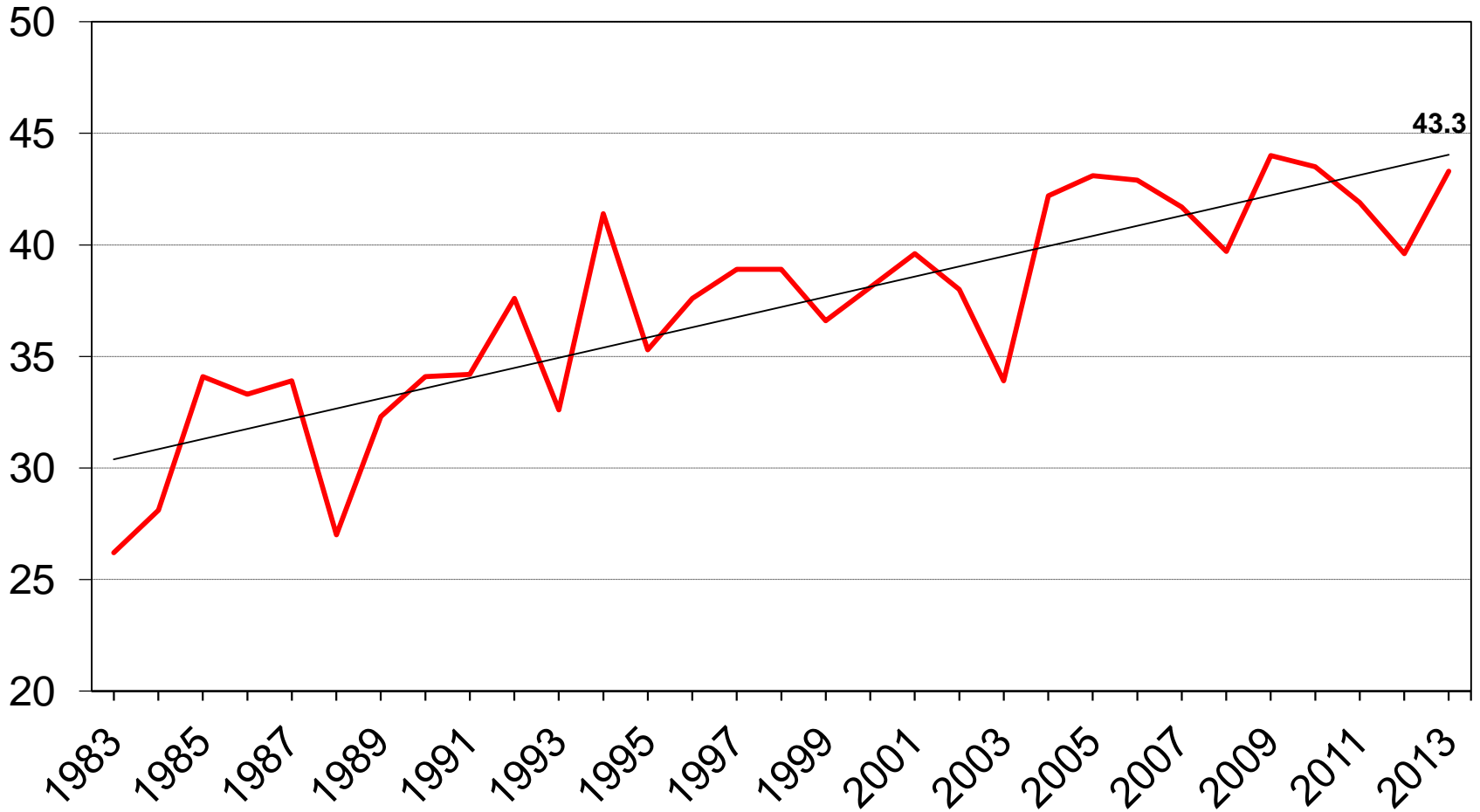
Crop	Unit	2013	% Change from Previous Forecast	% Change from Previous Season
Soybeans				
Planted	Mil Ac	76.5	+0.1	-0.9
Harvested	Mil Ac	75.9	+0.2	-0.4
Yield	Bu/Ac	43.3	+0.7	+8.8
Production	Bil Bu	3.29	+1.0	+8.4
Dec Stocks	Bil Bu	2.15	---	+9.2



U.S. Soybean Yield



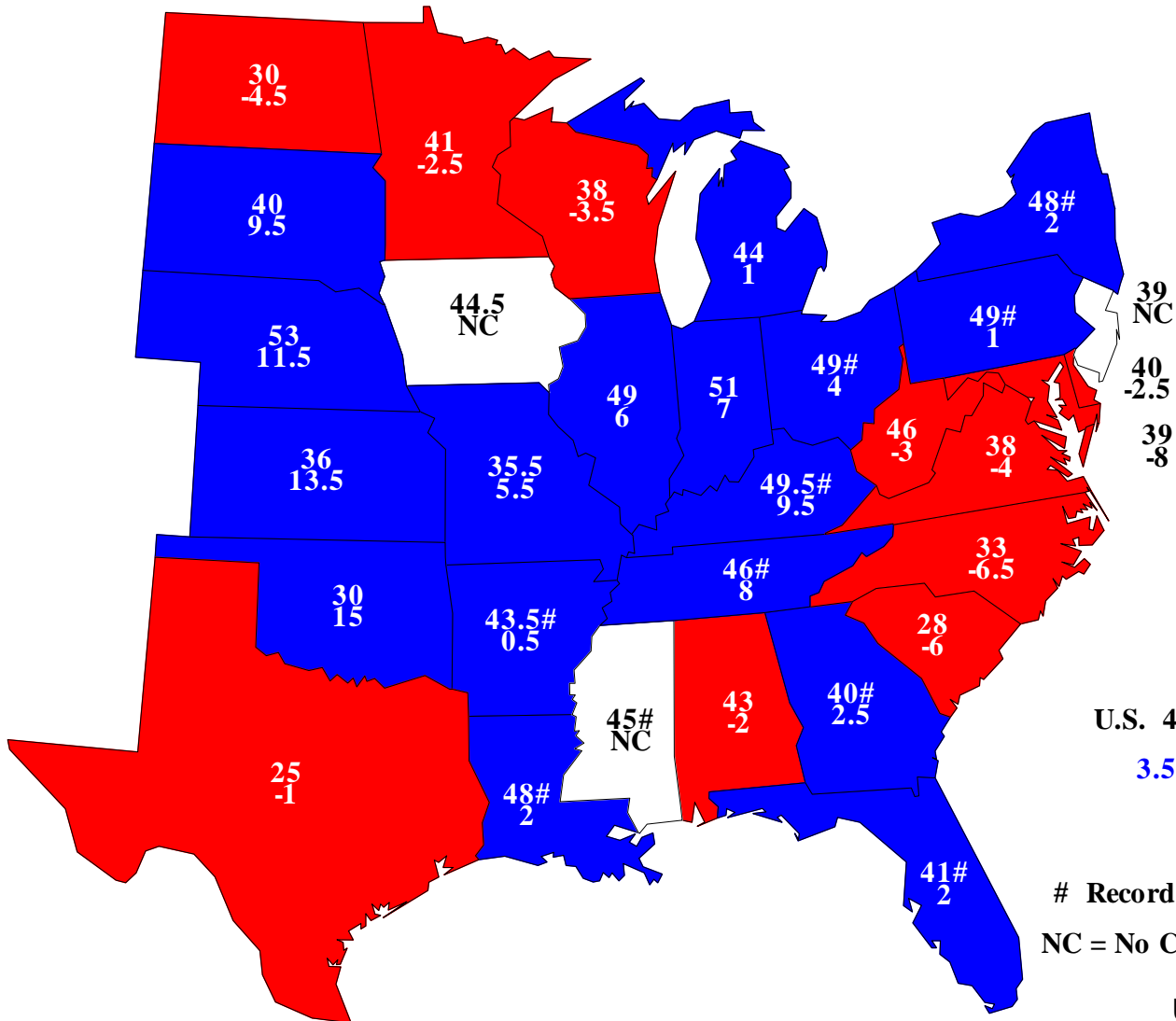
Bushels/acre





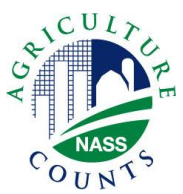
Soybean Yields 2013

Bushels and Change From Previous Year



U.S. 43.3
3.5

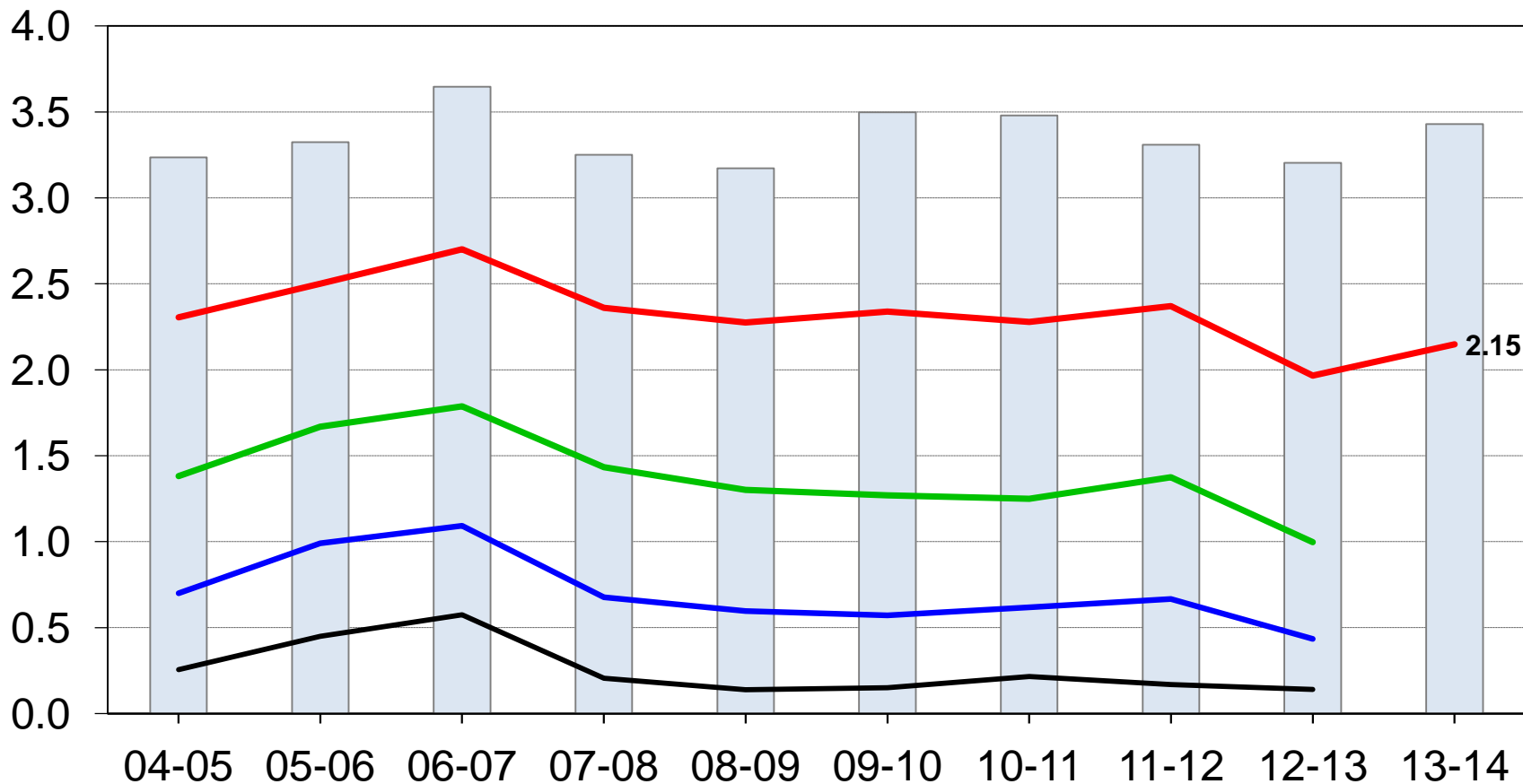
Record High
NC = No Change

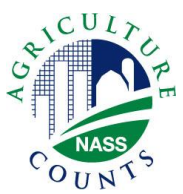


U.S. Soybean Stocks



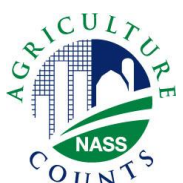
Billion bushels





Crop Production 2013 Annual

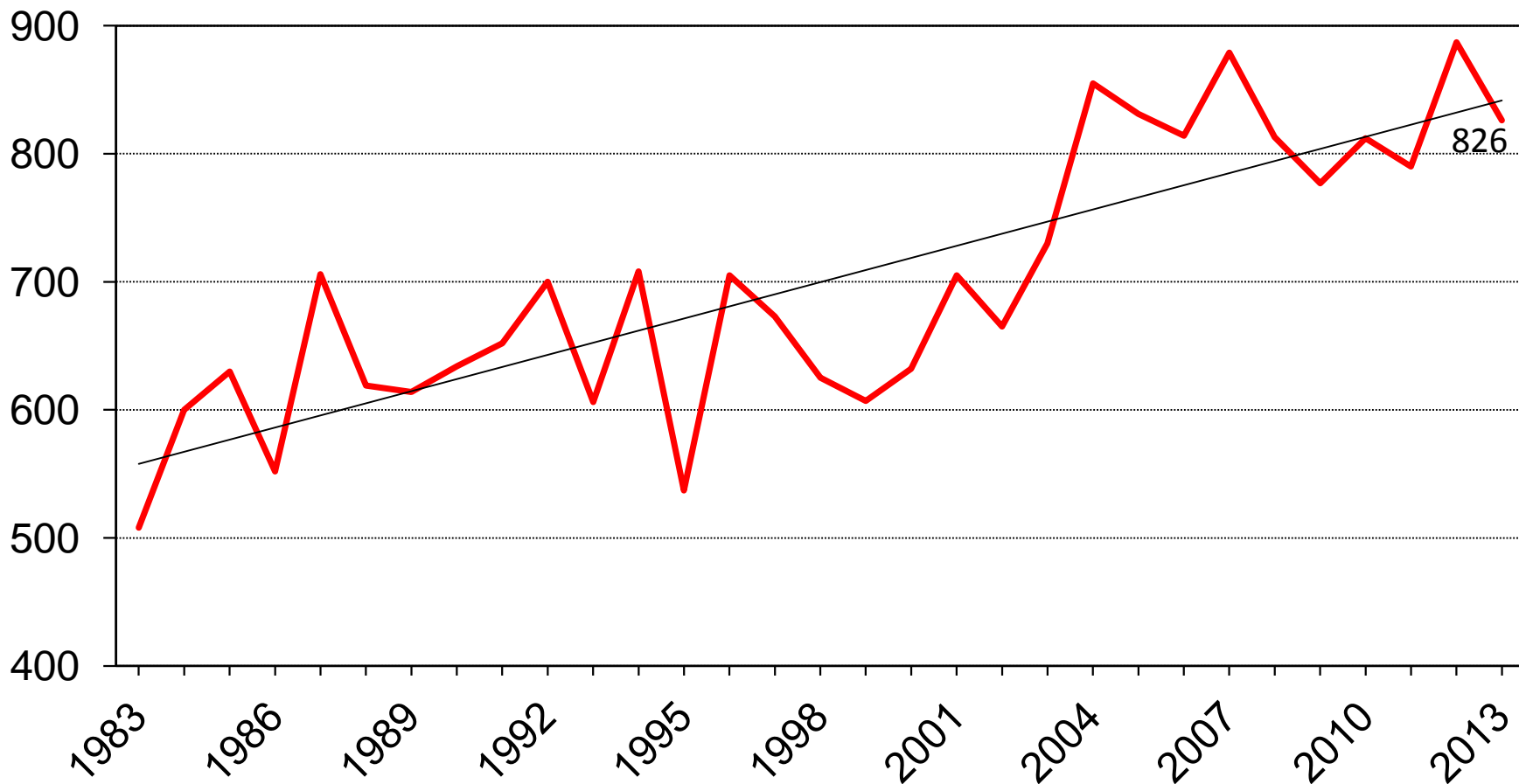
Crop	Unit	2013	% Change from Previous Forecast	% Change from Previous Season
All Cotton				
Planted	Mil Ac	10.4	+0.7	-15.5
Harvested	Mil Ac	7.66	-1.5	-18.2
Yield	Lbs/Ac	826	+2.5	-6.9
Production	Mil Bales	13.2	+0.9	-23.8

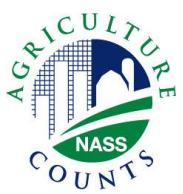


U.S. All Cotton Yield



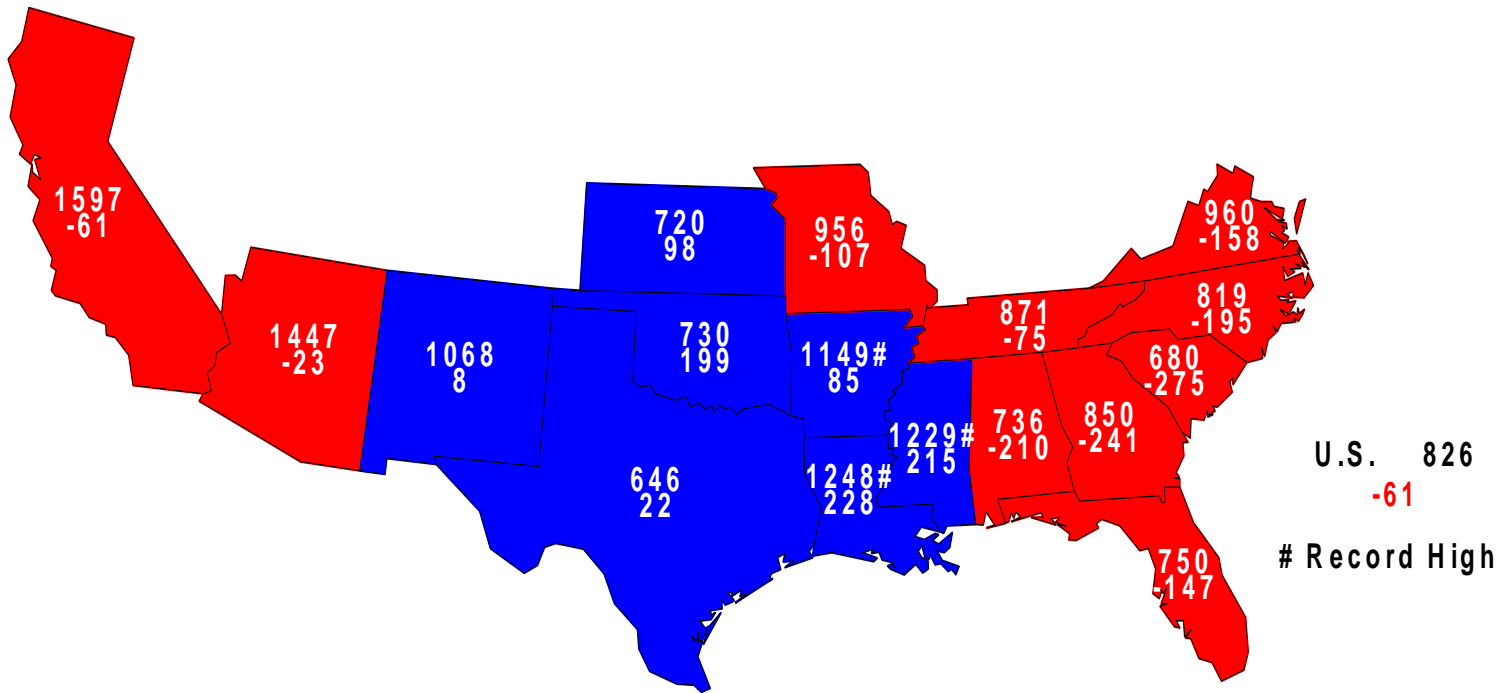
Pounds/acre





All Cotton Yield, 2013

Pounds and Change From Previous Year



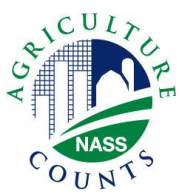
U.S. 826
-61

Record High



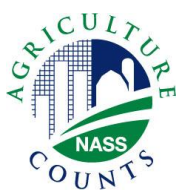
Crop Production 2013 Annual

Crop	Unit	2013	% Change from Previous Forecast	% Change from Previous Season
Sorghum, Grain				
Planted, All	Mil Ac	8.06	-0.1	+29.1
Harvested	Mil Ac	6.53	-2.2	+31.8
Yield	Bu/Ac	59.6	-4.2	+19.7
Production	Mil Bu	389	-6.4	+57.6
Dec Stocks	Mil Bu	229	---	+63.5



Crop Production 2013 Annual

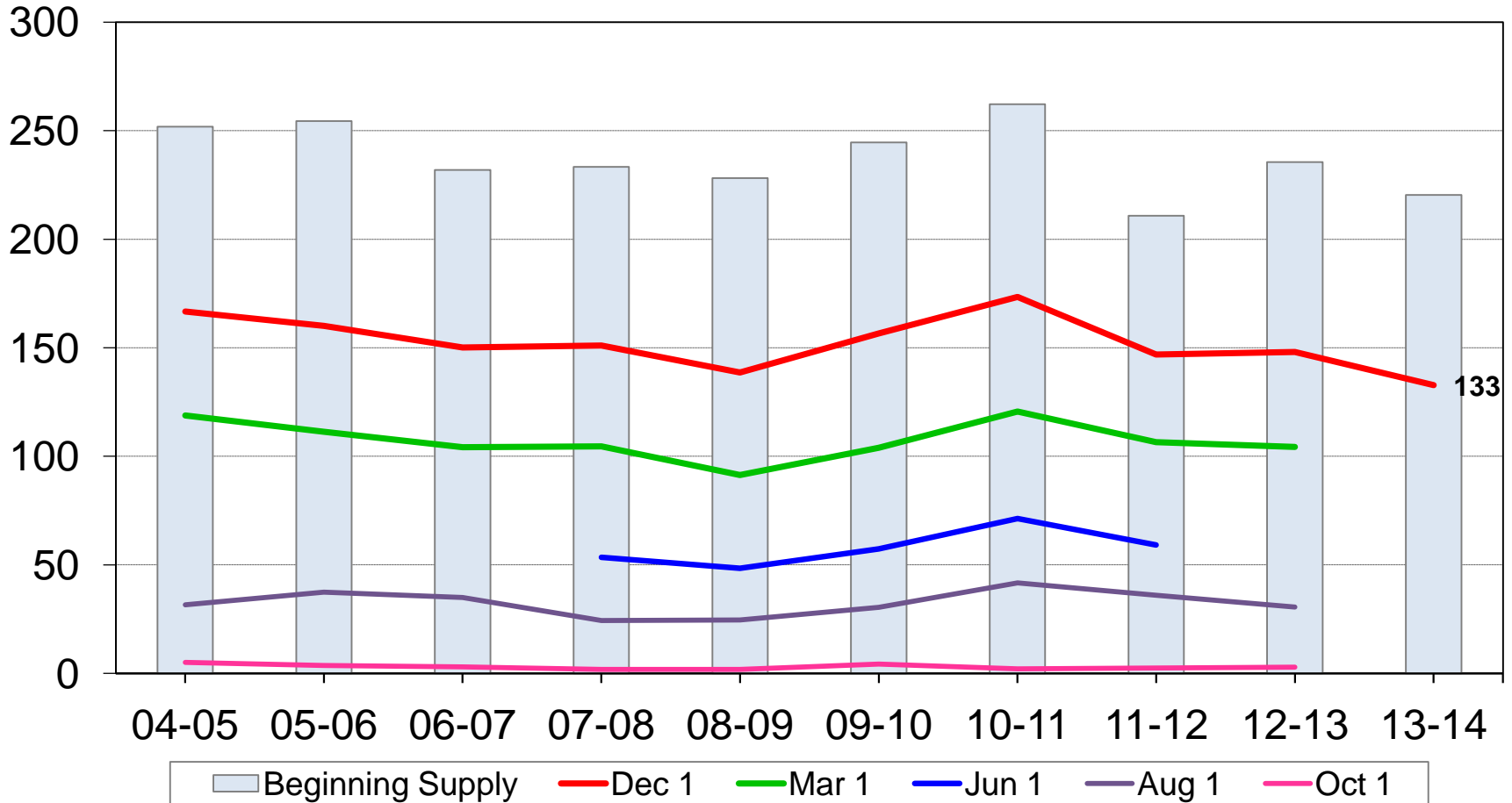
Crop	Unit	2013	% Change from Previous Forecast	% Change from Previous Season
Rice				
Planted	Mil Ac	2.49	+0.2	-7.8
Harvested	Mil Ac	2.47	+0.2	-7.9
Yield	Lbs/Ac	7,694	+0.4	+3.3
Production	Mil Cwt	190	+0.6	-4.8
Dec Stocks	Mil Cwt	133	---	-10.3

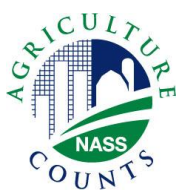


U.S. Rough Rice Stocks



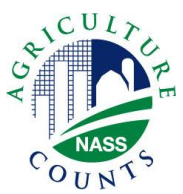
Million cwt





All Wheat Stocks

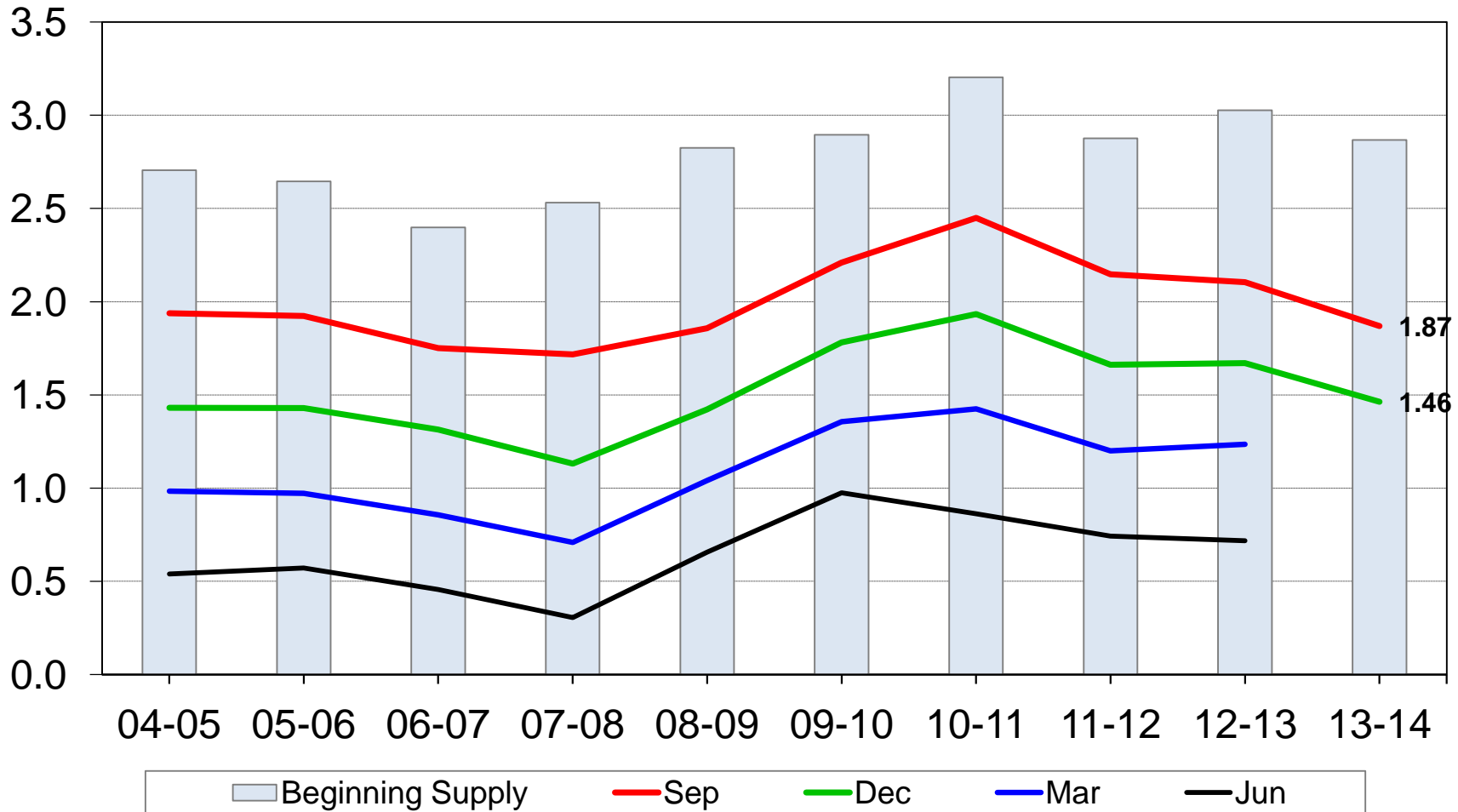
Crop	Unit	2013	% Change from Previous Forecast	% Change from Previous Season
All Wheat				
Dec Stocks	Bil Bu	1.46	---	-12.4

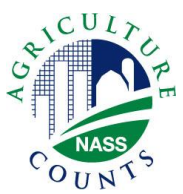


U.S. All Wheat Stocks



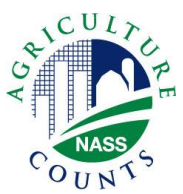
Billion bushels





Winter Wheat Seedings

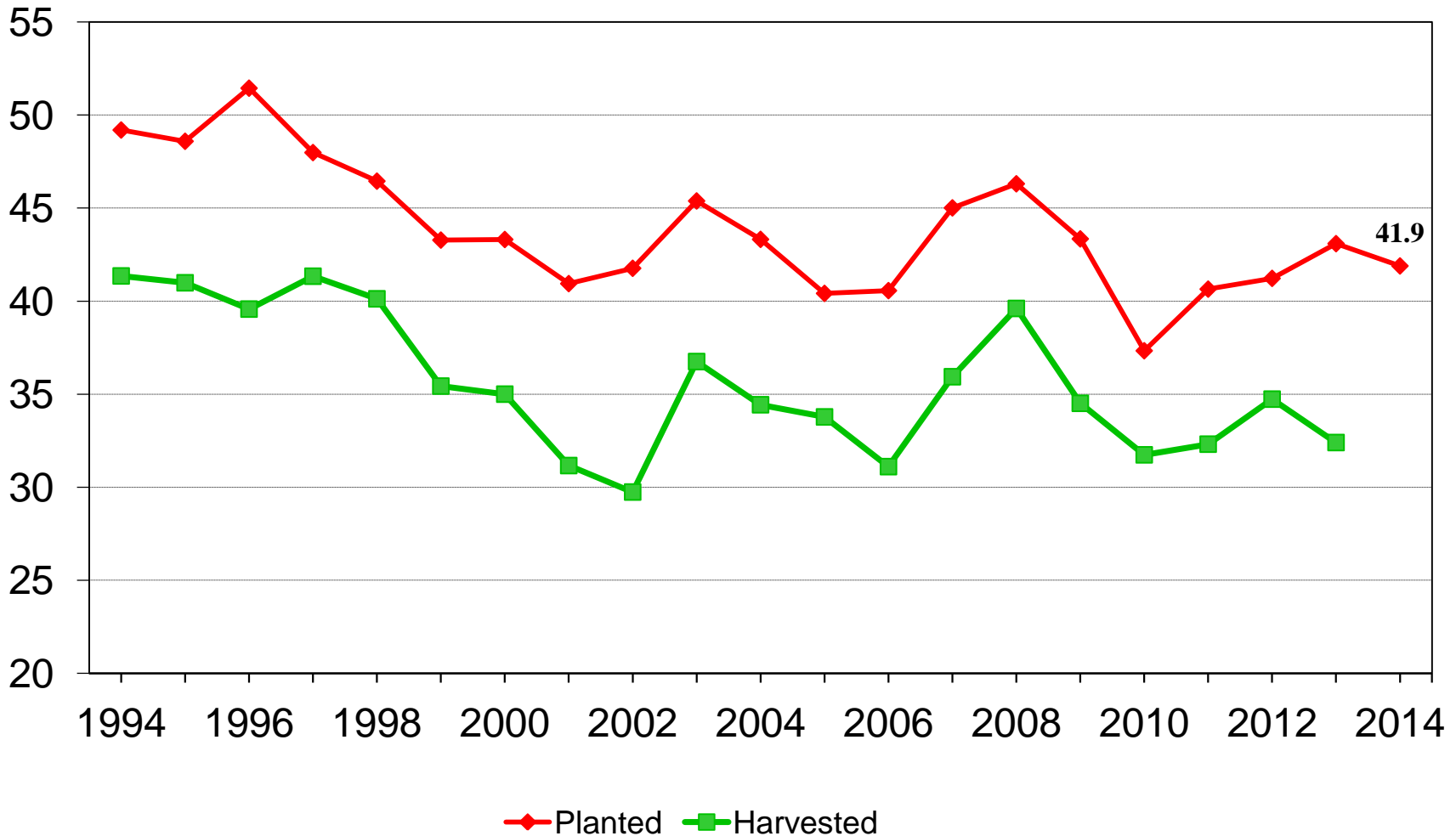
Crop	Unit	2014	% Change from Previous Forecast	% Change from Previous Season
Winter Wheat Seedings	Mil Ac	41.9	---	-2.8

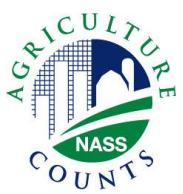


U.S. Winter Wheat Acres



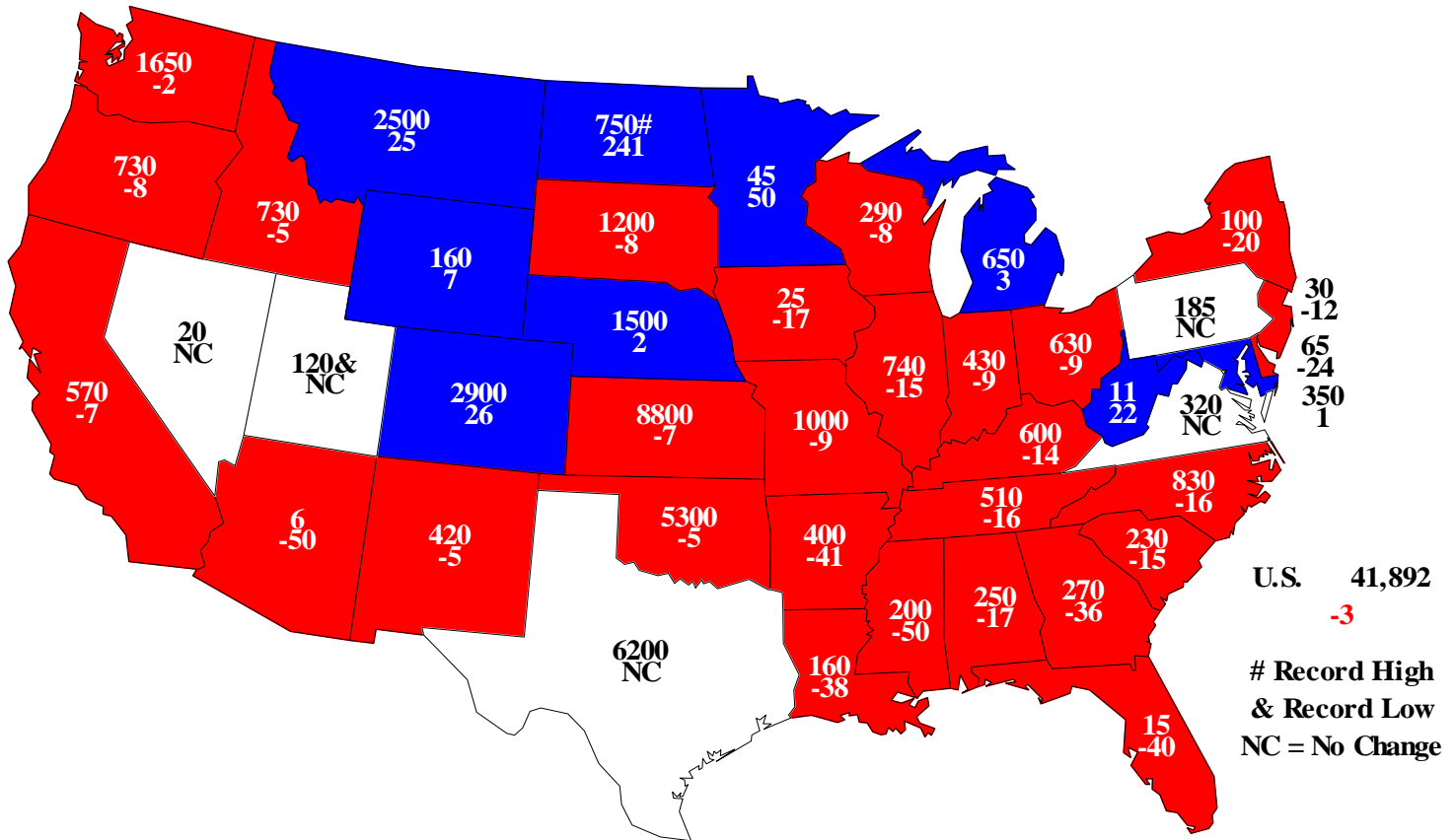
Million acres





Winter Wheat Planted, 2014

Acres(000) and Percent Change From Previous Year





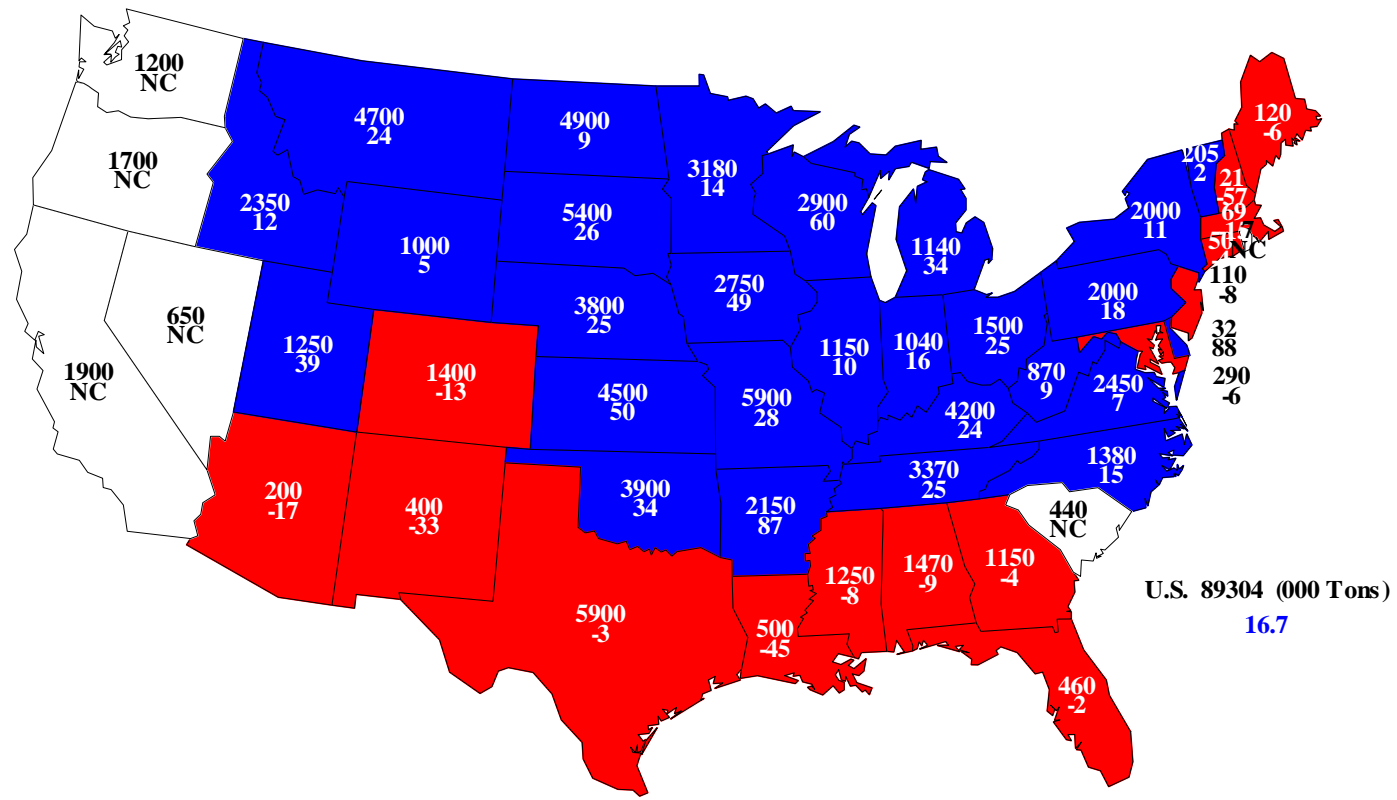
Crop Production 2013 Annual

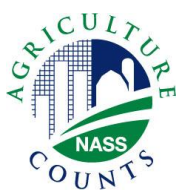
Crop	Unit	2013	% Change from Previous Forecast	% Change from Previous Season
All Hay				
Harvested	Mil Ac	58.3	+2.9	+3.5
Yield	Tons/Ac	2.33	-5.7	+9.4
Production	Mil Tons	136	-2.8	+13.4
Dec Stocks	Mil Tons	89.3	---	+16.7



2013 All Hay Stocks

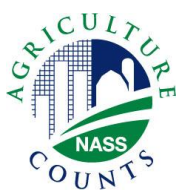
Stocks (000) and Percent Change From Previous Year





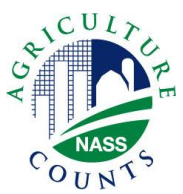
Crop Production 2013 Annual

Crop	Unit	2013	% Change from Previous Forecast	% Change from Previous Season
Sugarcane	Mil Tons	32.2	NC	-0.1
Sugarbeets	Mil Tons	32.8	+<0.1	-6.8
Peanuts	Bil Lbs	4.17	+7.0	-38.3
Sunflowers	Bil Lbs	2.03	---	-27.0
Canola	Bil Lbs	2.21	---	-9.7



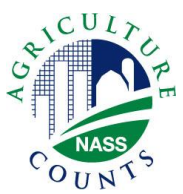
Crop Production 2013 Annual

Crop	Unit	2013	% Change from Previous Forecast	% Change from Previous Season
Mustard Seed	Mil Lbs	36.7	---	+22.7
Safflower	Mil Lbs	209	---	+16.7
Flaxseed	Mil Bu	3.36	---	-41.2
Rapeseed	Mil Lbs	1.94	---	-60.2
Proso Millet	Mil Bu	18.4	---	+497



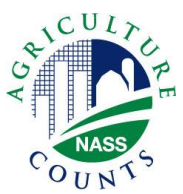
Crop Production 2013 Annual

Crop	Unit	2013	% Change from Previous Forecast	% Change from Previous Season
Dry Edible Beans	Mil Cwt	24.5	+1.8	-23.3
Lentils	Mil Cwt	5.02	+14.7	-5.3
Peas				
Austrian Winter	Thou Cwt	228	+37.3	+36.5
Dry Edible	Mil Cwt	15.6	+0.1	+43.7
All Potatoes	Mil Cwt	437	-0.5	-5.5
Sweet Potatoes	Mil Cwt	24.8	---	-6.4
Tobacco	Mil Lbs	724	-0.9	-5.1



January 2014 Crop Production

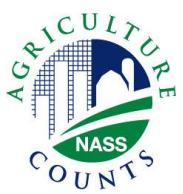
Crop	Unit	January 2014	% Change from Previous Forecast	% Change from Previous Season
Oranges	Mil Tons	7.39	-5.0	-11.5
Grapefruit	Mil Tons	1.08	-0.2	-9.1
Lemons	Thou Tons	871	-6.4	-4.5
Tangelos	Thou Tons	45.0	NC	NC
Tangerines and Mandarins	Thou Tons	698	-2.9	+2.0



United States Department of Agriculture
National Agricultural Statistics Service

Upcoming Reports

Jan 24	Cotton Ginnings, Cattle on Feed
Jan 29	Peanut Stocks and Processing
Jan 31	Agricultural Prices, Cattle, and Sheep and Goats
Feb 10	Crop Production
Feb 14	Crop Values
Feb 20	Census of Agriculture - Preliminary



United States Department of Agriculture
National Agricultural Statistics Service



All Reports Available At

www.nass.usda.gov

For Questions

202-720-2127

800-727-9540

nass@nass.usda.gov