



United States Department of Agriculture
National Agricultural Statistics Service



JUNE CROP PRODUCTION

Executive Summary

JUNE 11, 2014

12:00 PM



Contents



Field Crops	Fruit	Specialty Crops
Winter Wheat	Citrus	Hops
Sugarcane*	Prunes	Maple Syrup
Sugarbeets*		
Sweet Potatoes*		

***2013 Crop Year Revisions**



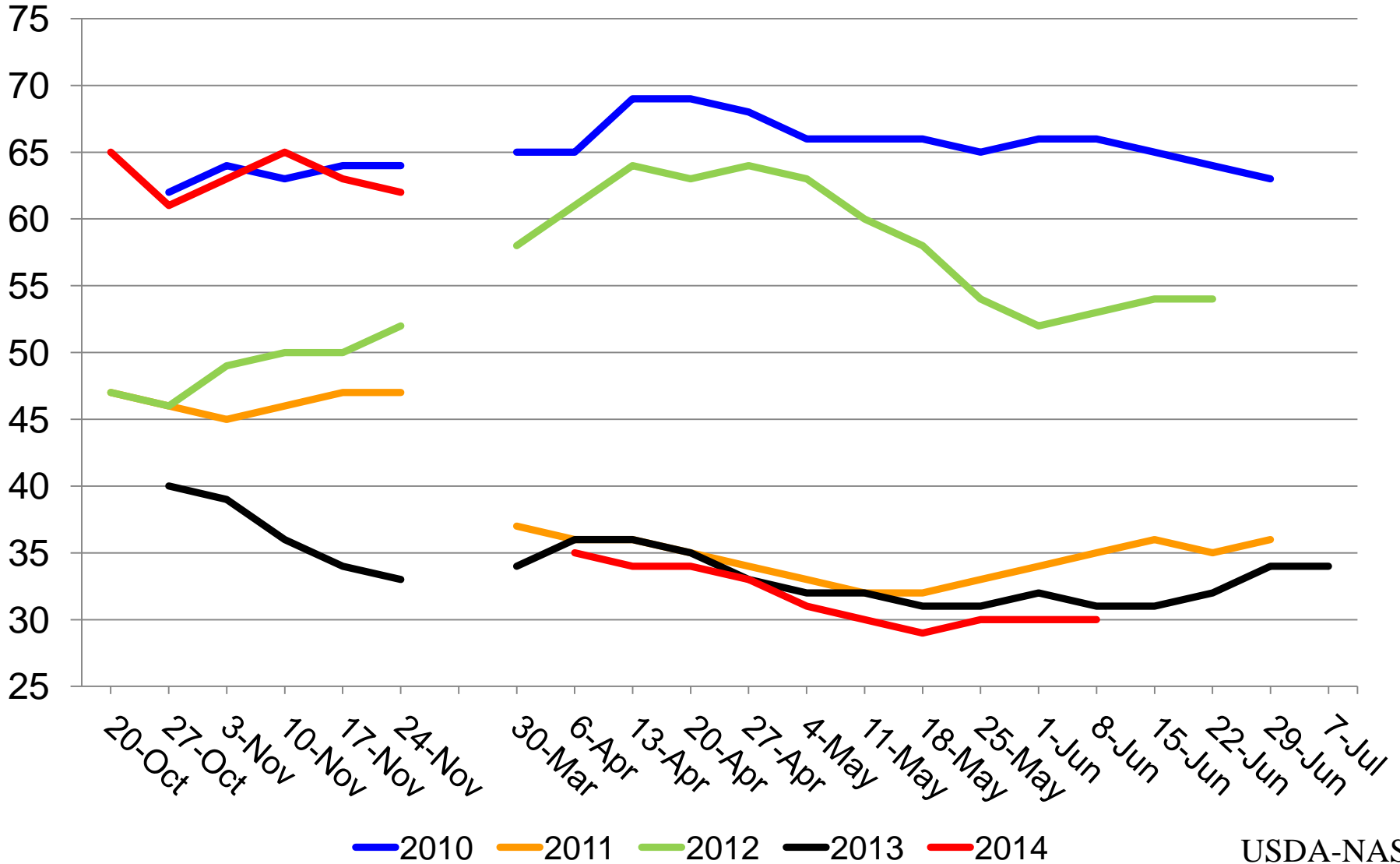
Survey Overview

	Ag Yield	Objective Yield
Survey Type	Farmer Reported	Field Measurement
Crops Included	Winter & Durum Wheat	Winter Wheat
States	30	10
Sample Size	~5,300	1,040
Collection Period	May 28 – June 5	May 24 – June 1



Winter Wheat Condition

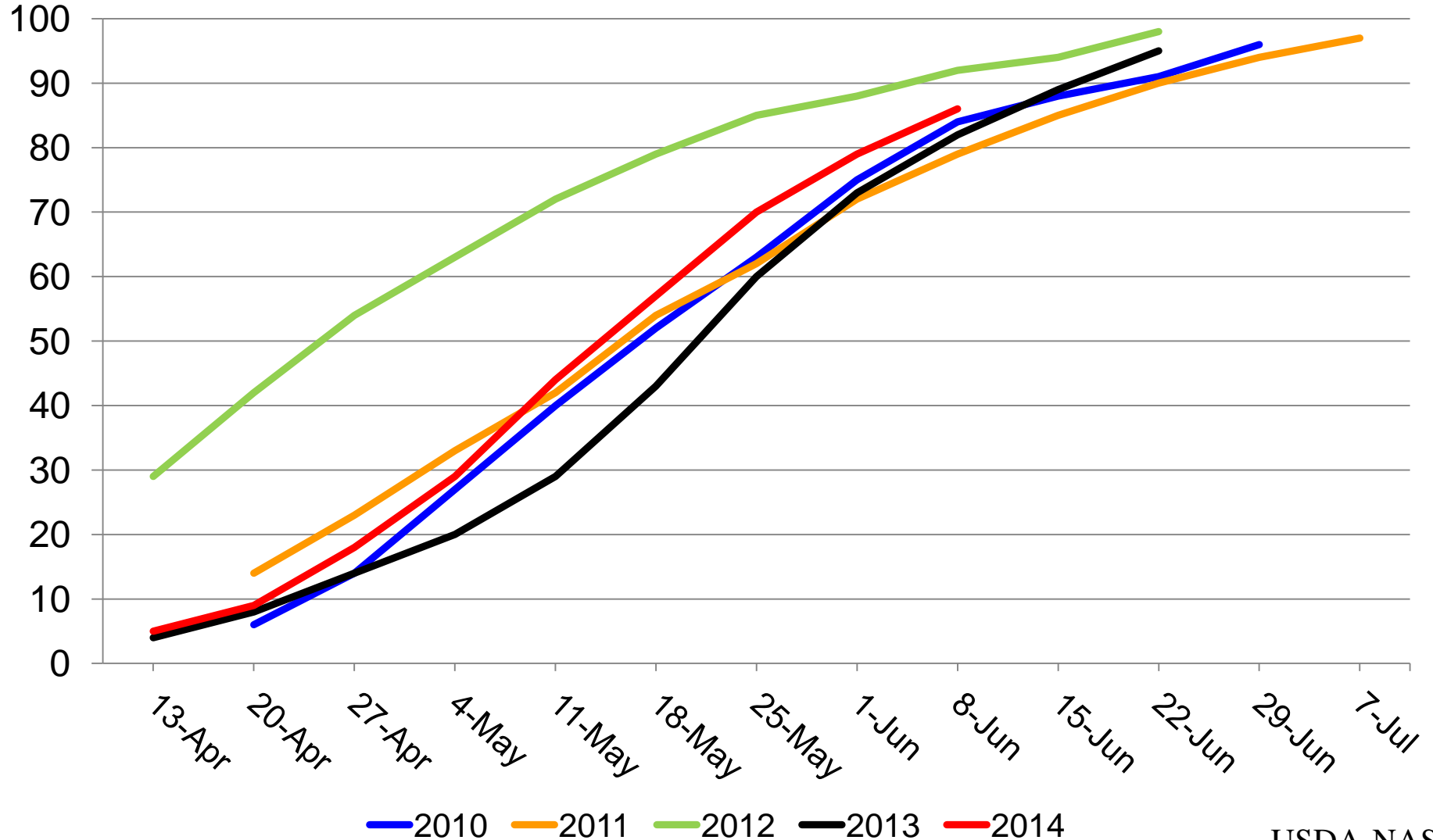
Percent Rated Good to Excellent



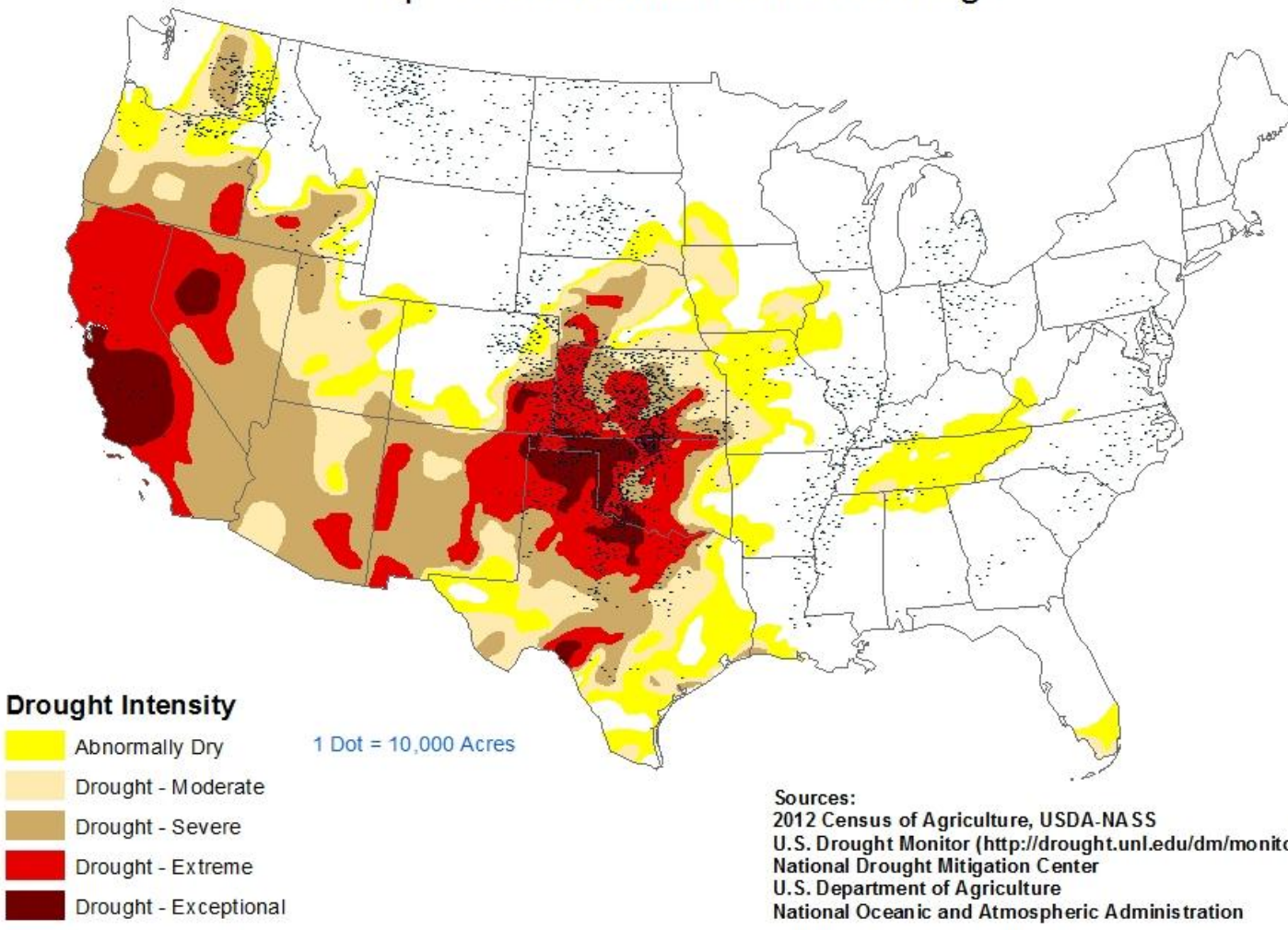


Winter Wheat Progress

Percent Headed



U.S. Drought Intensity For June 3, 2014 Compared With Winter Wheat Acreage





June 2014 Crop Production

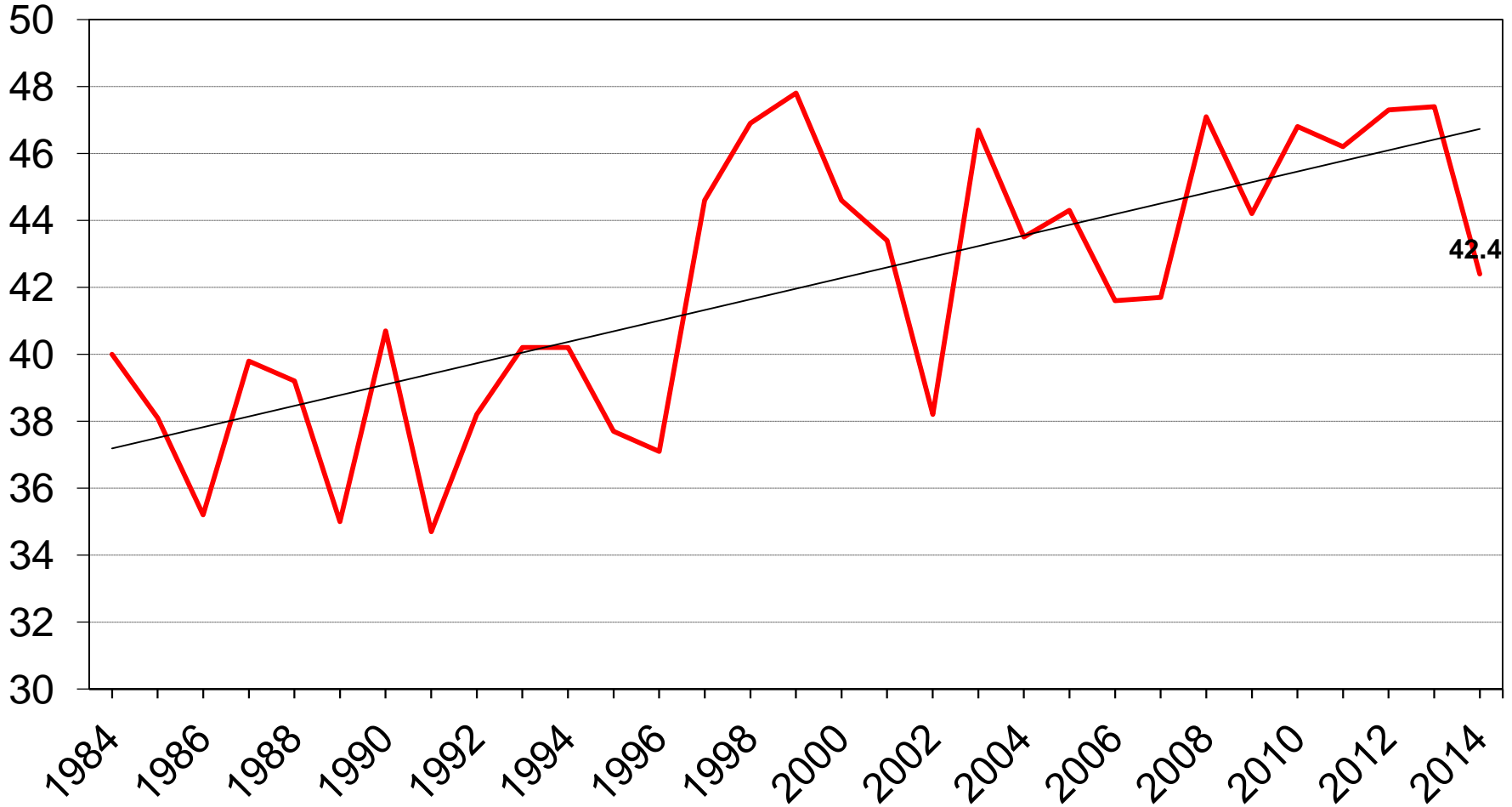
Crop	Unit	June 2014	% Chg from Prev Forecast	% Chg from Prev Season
Winter Wheat:				
Harvested	Mil Ac	32.6	NC	+0.5
Yield	Bu/Ac	42.4	-1.6	-10.5
Production	Bil Bu	1.38	-1.5	-10.0
Prod By Class:				
Hard Red	Mil Bu	720	-3.4	-3.2
Soft Red	Mil Bu	454	+1.6	-19.6
White	Mil Bu	206	-1.4	-8.4



U.S. Winter Wheat Yield

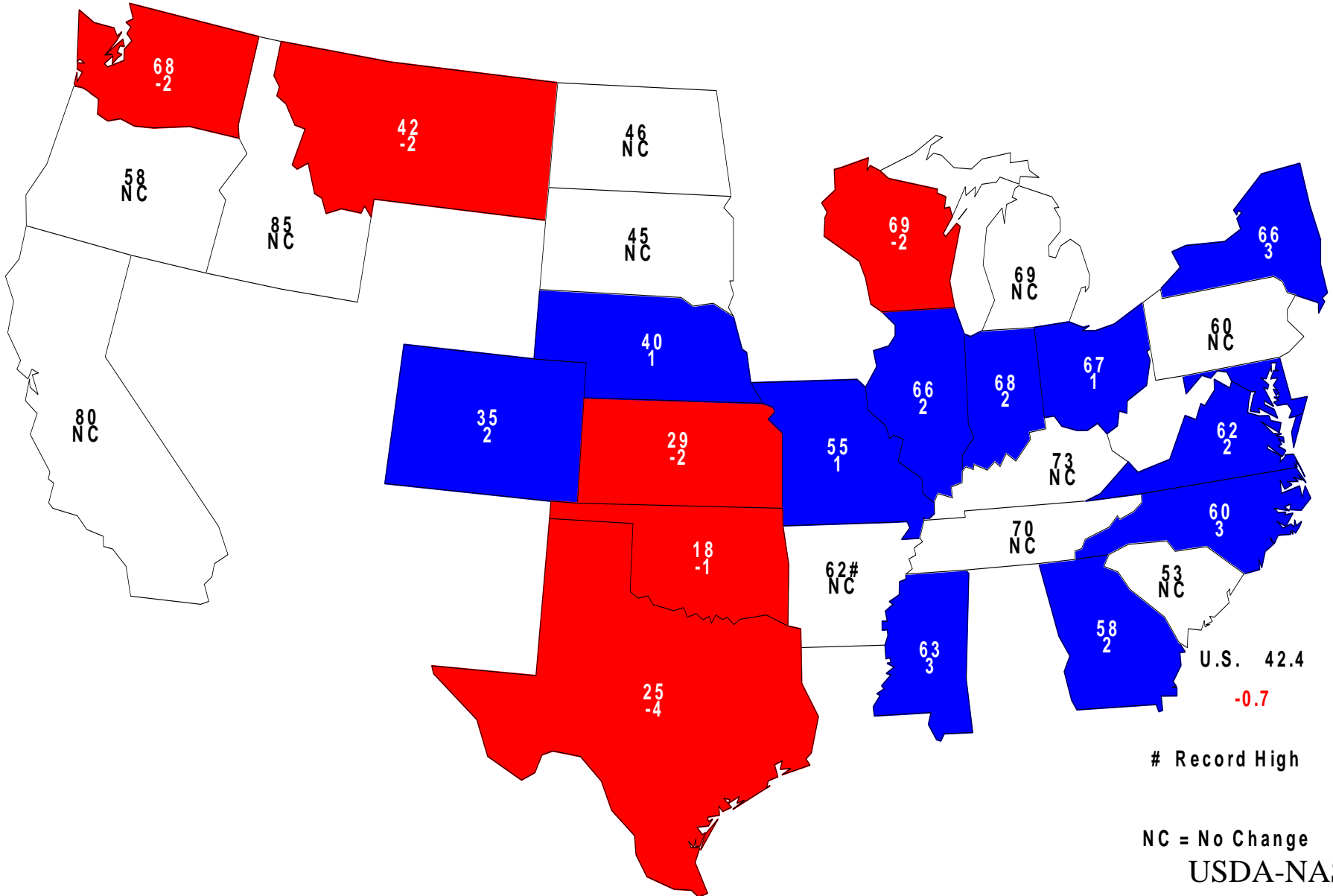


Bushels/acre





June 1, 2014 Winter Wheat Yield Bushels and Change From Previous Month



Record High

NC = No Change
USDA-NASS
6-11-14

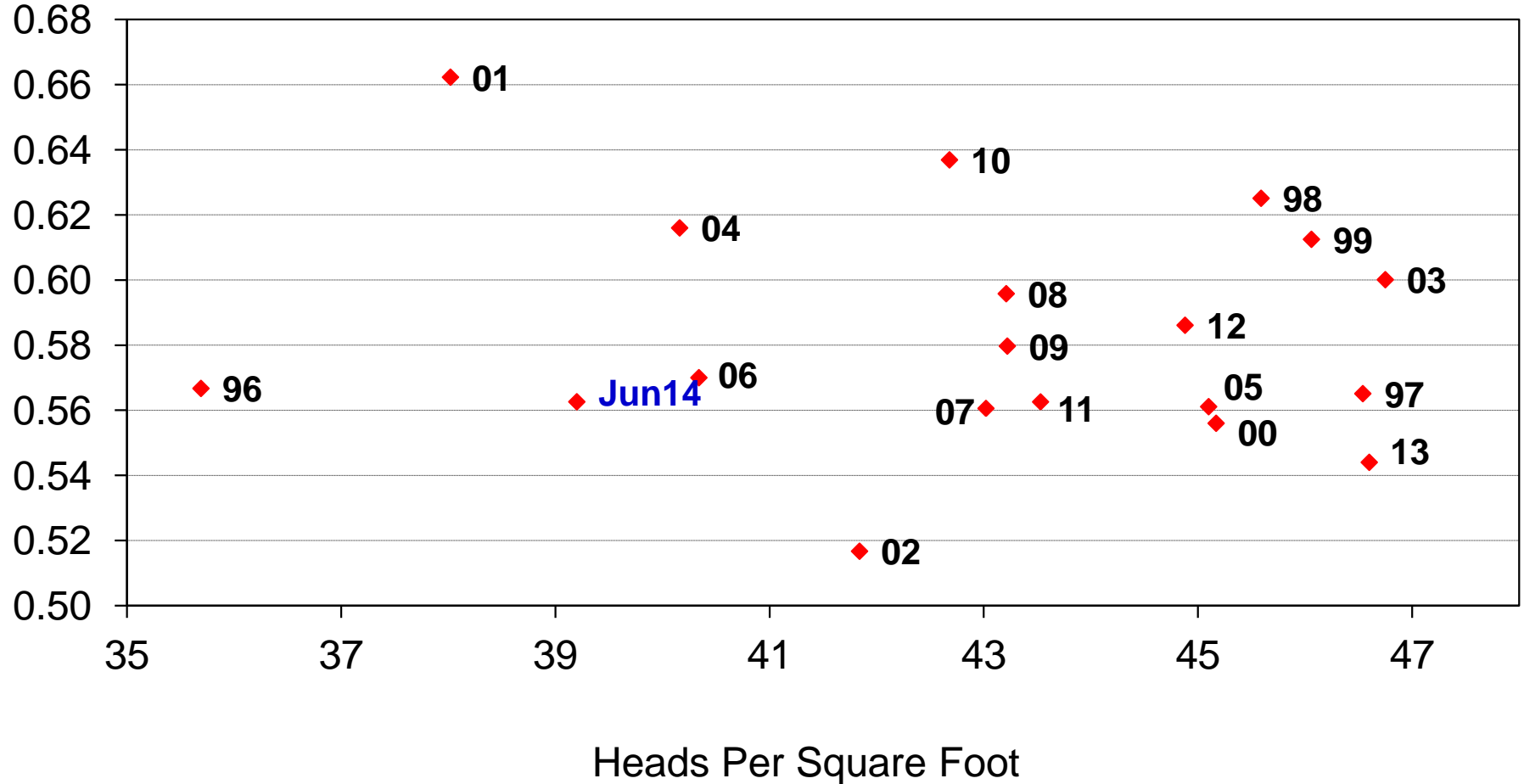


10-State Winter Wheat Region

Derived Head Weight vs Heads Per Square Foot



Grams/head





Florida Citrus Survey Overview

	Row Count	Fruit Maturity
Survey Type	Field Staff Observations	Laboratory Tests
Crops Included	Oranges, Grapefruit, Tangerines, Tangelos	Valencia Oranges
Sample Size	1,081 groves not harvested during previous survey (1,043 are Valencia oranges)	58 samples not harvested during previous survey, <10 collected--insufficient for testing
Collection Period	June 2-3	June 2-3



June 2014 Crop Production

Crop	Unit	June 2014	% Change from Prev Forecast	% Change from Prev Season
Oranges	Mil Tons	6.94	-3.7	-16.1
Grapefruit	Mil Tons	1.07	NC	-11.5
Tangerines and Mandarins	Thou Tons	676	NC	-1.2
Tangelos	Thou Tons	40.0	NC	-11.1



June 2014 Crop Production

Crop	Unit	June 2014	% Change from Prev Season
Maple Syrup	Mil Gal	3.17	-10.1
Hops	Thou Ac	38.4	+9.0
Prunes (California)	Thou Tons	95.0	+11.8



2013 Revisions – Sugar Crops



Crop	Unit	June 2014	% Chg from Prev Estimate	% Chg from Prev Season
All Sugarcane:				
Harvested	Thou Ac	911	+0.5	+0.9
Yield	Tons/Ac	33.8	-2.6	-5.3
Production	Mil Tons	30.8	-2.2	-4.5
Sugarbeets:				
Harvested	Mil Ac	1.15	- <0.1	-4.2
Yield	Tons/Ac	28.4	-0.4	-3.1
Production	Mil Tons	32.8	-0.1	-6.8



2013 Revisions – Sweet Potatoes



Crop	Unit	June 2014	% Chg from Prev Estimate	% Chg from Prev Season
Sweet Potatoes:				
Harvested	Thou Ac	113	NC	-10.6
Yield	Cwt/Ac	219	NC	+4.8
Production	Mil Cwt	24.8	NC	-6.4



United States Department of Agriculture
National Agricultural Statistics Service



Upcoming Reports

June 20	Cattle on Feed
June 27	Agricultural Prices Quarterly Hogs and Pigs
June 30	Acreage Grain Stocks
July 11	Crop Production



United States Department of Agriculture
National Agricultural Statistics Service



All Reports Available At

www.nass.usda.gov

For Questions

202-720-2127

800-727-9540

nass@nass.usda.gov