



United States Department of Agriculture  
**National Agricultural Statistics Service**

---

---



**JULY CROP PRODUCTION**  
Executive Summary

JULY 11, 2014

12:00 PM



# Contents



Field Crops	Fruit and Nuts	Specialty Crops
Winter Wheat	Citrus	Tobacco
Other Spring Wheat	Apricots	
Durum Wheat	Almonds	
Barley		
Oats		



# Survey Overview

	Ag Yield	Objective Yield
Survey Type	Farmer Reported	Field Measurement
Crops Included	Winter, Spring & Durum Wheat, Oats, Barley, Tobacco	Winter Wheat
States	35	10
Sample Size	~8,100	1,410
Collection Period	June 26 – July 7	June 24 – July 1



# July 2014 Crop Production

Crop	Unit	July 2014	% Change from Previous Forecast	% Change from Previous Season
<b>Winter Wheat</b>				
Harvested	Mil Ac	32.4	* NC	+ <0.1
Yield	Bu/Ac	42.2	-0.5	-11.0
Production	Bil Bu	1.37	-1.0	-10.9

\* No change from June Acreage



# July 2014 Crop Production

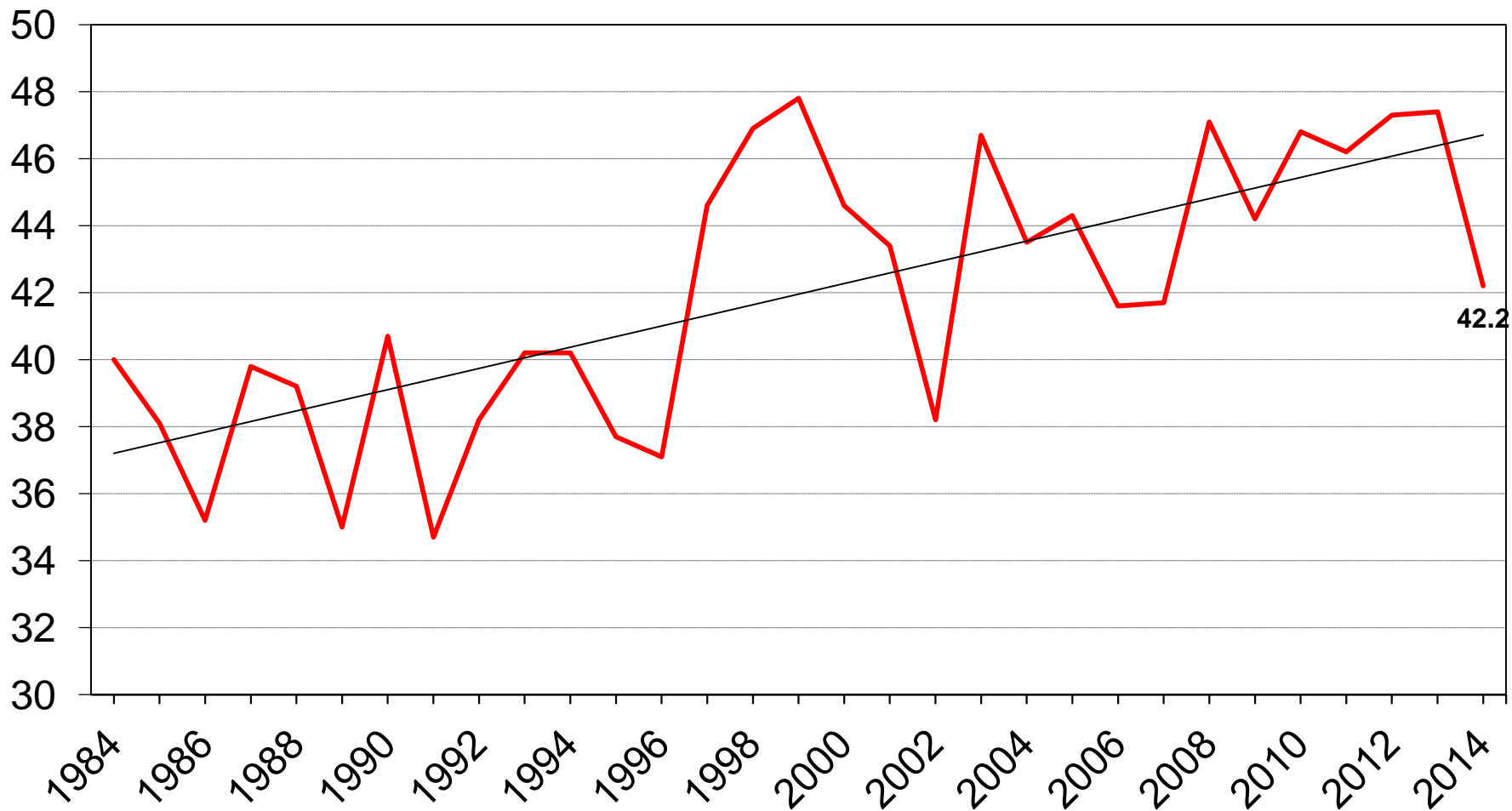
Crop	Unit	July 2014	% Change from Previous Forecast	% Change from Previous Season
<b>Winter Wheat Production by Class</b>				
Hard Red	Mil Bu	703	-2.4	-5.5
Soft Red	Mil Bu	458	+0.9	-18.9
White	Mil Bu	206	+ <0.1	-8.4



# U.S. Winter Wheat Yield



Bushels/acre







# Winter Wheat Objective Yield - July

## Percent of Samples Processed in the Lab

<b>Year</b>	<b>Mature</b>
	<b><i>---Percent---</i></b>
<b>2010</b>	<b>58</b>
<b>2011</b>	<b>60</b>
<b>2012</b>	<b>77</b>
<b>2013</b>	<b>55</b>
<b>2014</b>	<b>58</b>



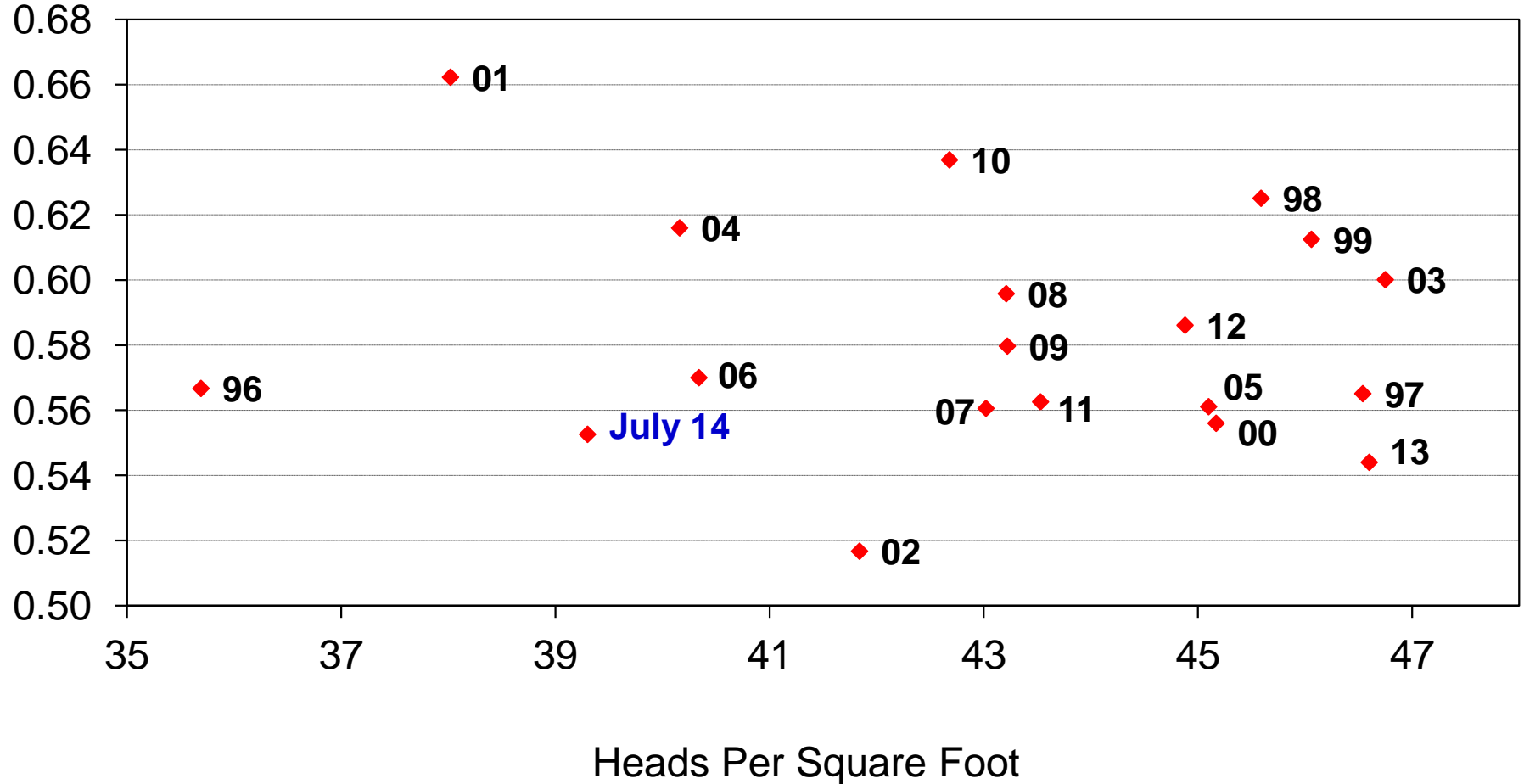


# 10-State Winter Wheat Region

## Derived Head Weight vs Heads Per Square Foot



Grams/head





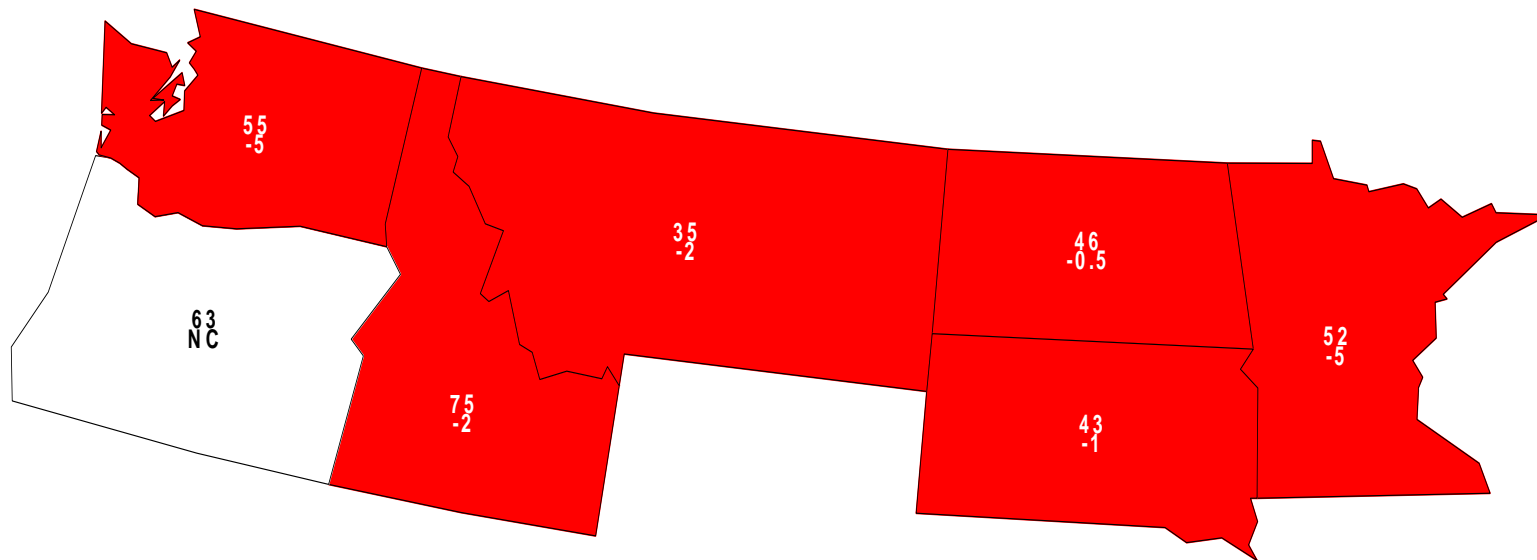
# July 2014 Crop Production

Crop	Unit	July 2014	% Change from Previous Forecast	% Change from Previous Season
<b>Other Spring Wheat</b>				
Harvested	Mil Ac	12.4	NC	+9.4
Yield	Bu/Ac	45.5	---	-3.4
Production	Mil Bu	565	---	+5.8



# July 1, 2014 Other Spring Wheat Yield

## Bushels and Change From Previous Year



U.S. 45.5  
-1.6

NC = No Change



# July 2014 Crop Production

Crop	Unit	July 2014	% Change from Previous Forecast	% Change from Previous Season
<b>Durum Wheat</b>				
Harvested	Mil Ac	1.42	NC	-0.2
Yield	Bu/Ac	42.1	---	-3.4
Production	Mil Bu	59.6	---	-3.7



# July 2014 Crop Production

<b>Crop</b>	<b>Unit</b>	<b>July 2014</b>	<b>% Change from Previous Forecast</b>	<b>% Change from Previous Season</b>
<b>All Wheat</b>				
Harvested	Mil Ac	46.2	NC	+2.4
Yield	Bu/Ac	43.1	---	-8.7
Production	Bil Bu	1.99	---	-6.5



# July 2014 Crop Production

Crop	Unit	July 2014	% Change from Previous Forecast	% Change from Previous Season
<b>Oats</b>				
Harvested	Mil Ac	1.15	NC	<b>+11.9</b>
Yield	Bu/Ac	65.5	---	<b>+2.3</b>
Production	Mil Bu	75.5	---	<b>+14.6</b>
<b>Barley</b>				
Harvested	Mil Ac	2.63	NC	<b>-12.2</b>
Yield	Bu/Ac	71.2	---	<b>-0.7</b>
Production	Mil Bu	187	---	<b>-12.9</b>



# July 2014 Crop Production

Crop	Unit	July 2014	% Change from Previous Forecast	% Change from Previous Season
Oranges	Mil Tons	6.94	-0.1	-16.1
Grapefruit	Mil Tons	1.05	-1.2	- 2.5
Lemons	Thou Tons	871	NC	-4.5
Tangerines and Mandarins	Thou Tons	668	-1.2	-2.3



# July 2014 Crop Production

Crop	Unit	July 2014	% Change from Previous Forecast	% Change from Previous Season
<b>Tobacco</b>				
<b>Flue-Cured</b>	<b>Mil Lbs</b>	<b>536</b>	<b>---</b>	<b>+18.1</b>
<b>Almonds</b>	<b>Bil Lbs</b>	<b>2.10</b>	<b>+7.7</b>	<b>+4.5</b>
<b>Apricots</b>	<b>Thou Tons</b>	<b>61.5</b>	<b>---</b>	<b>---</b>





United States Department of Agriculture  
**National Agricultural Statistics Service**



---

---

## Upcoming Reports

July 17	Non-Citrus Fruits and Nuts Annual
July 25	Cattle Cattle on Feed
July 31	Agricultural Prices
August 12	Crop Production



United States Department of Agriculture  
**National Agricultural Statistics Service**



---

---

All Reports Available At

[www.nass.usda.gov](http://www.nass.usda.gov)

For Questions

202-720-2127

800-727-9540

[nass@nass.usda.gov](mailto:nass@nass.usda.gov)