



United States Department of Agriculture
National Agricultural Statistics Service



HOGS & PIGS INVENTORY

Executive Briefing

March 1, 2015

March Hogs and Pigs

Data Collection Period:

- February 28 – March 18

Sample Size:

- 8,114

Collection Methods:

- Mail, telephone, internet, face-to-face interview

Primary Data Items:

- Total inventory: by class, weight group, and quarter
- Sows farrowing, pig crop, and pigs per litter

U.S. Hogs & Pigs Revisions

Initial Estimate Previous Revision Current Revision Net Revision Current Estimate

Sep 2014	All Hogs and Pigs	65.4 million	-230,000 -0.4%	+848,000 +1.3%	+618,000 +0.9%	66.0 million
	Pig Crop	29.5 million	-5,000 -0.02%	+868,000 +2.94%	+863,000 +2.92%	30.4 million
Dec 2014	All Hogs and Pigs	66.1 million		+95,000 +0.1%		66.1 million

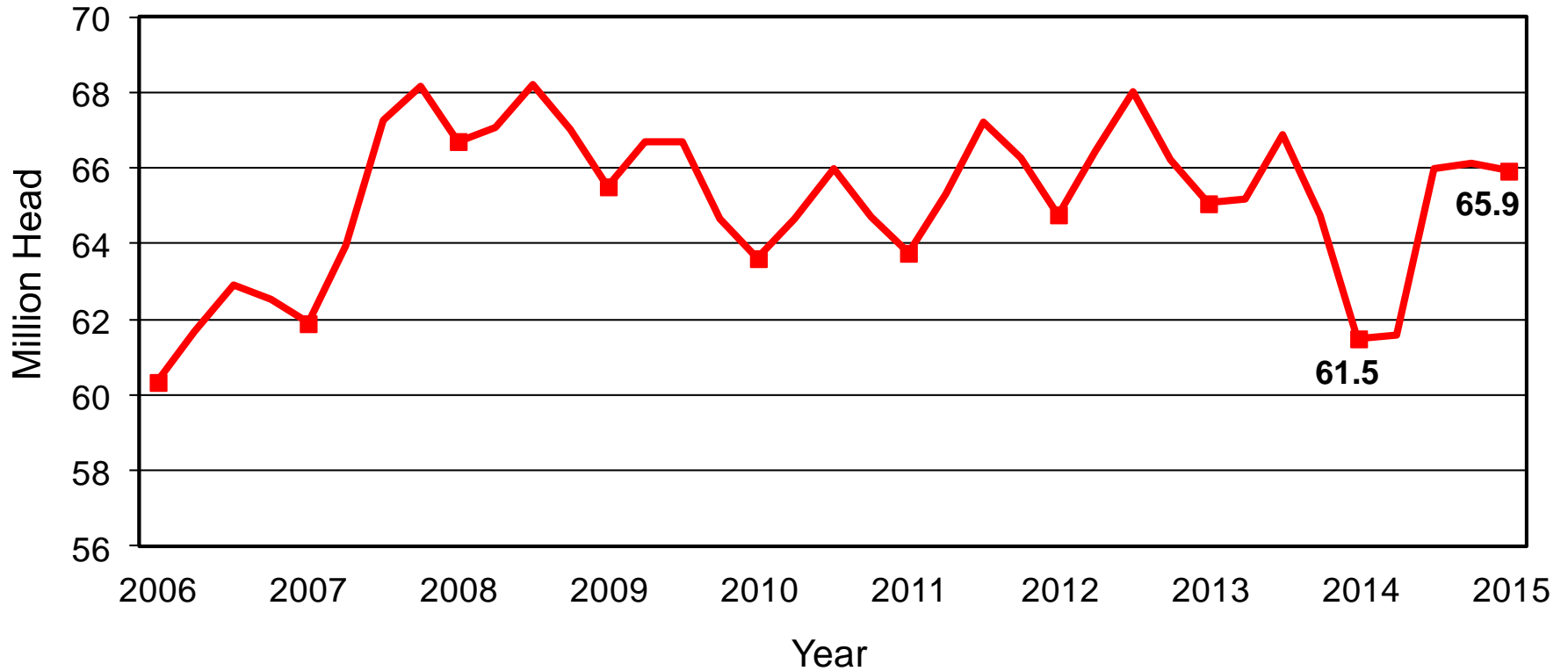
U.S. Hogs & Pigs Inventory

March 1, 2015

Inventory Items	(000) Hd	% PY
All Hogs & Pigs	65,934	107%
Breeding Hogs	5,982	102%
Market Hogs	59,953	108%
Dec – Feb Pig Crop	28,758	109%
Sows Farrowing	2,829	102%
Litter Rate	Number	% PY
Dec 2014 – Feb 2015	10.17	107%
Farrowing Intentions	(000) Hd	% PY
Mar – May 2015	2,870	102%
Jun – Aug 2015	2,927	98%

U.S. Quarterly Hogs and Pigs Inventory

March 1, 2015





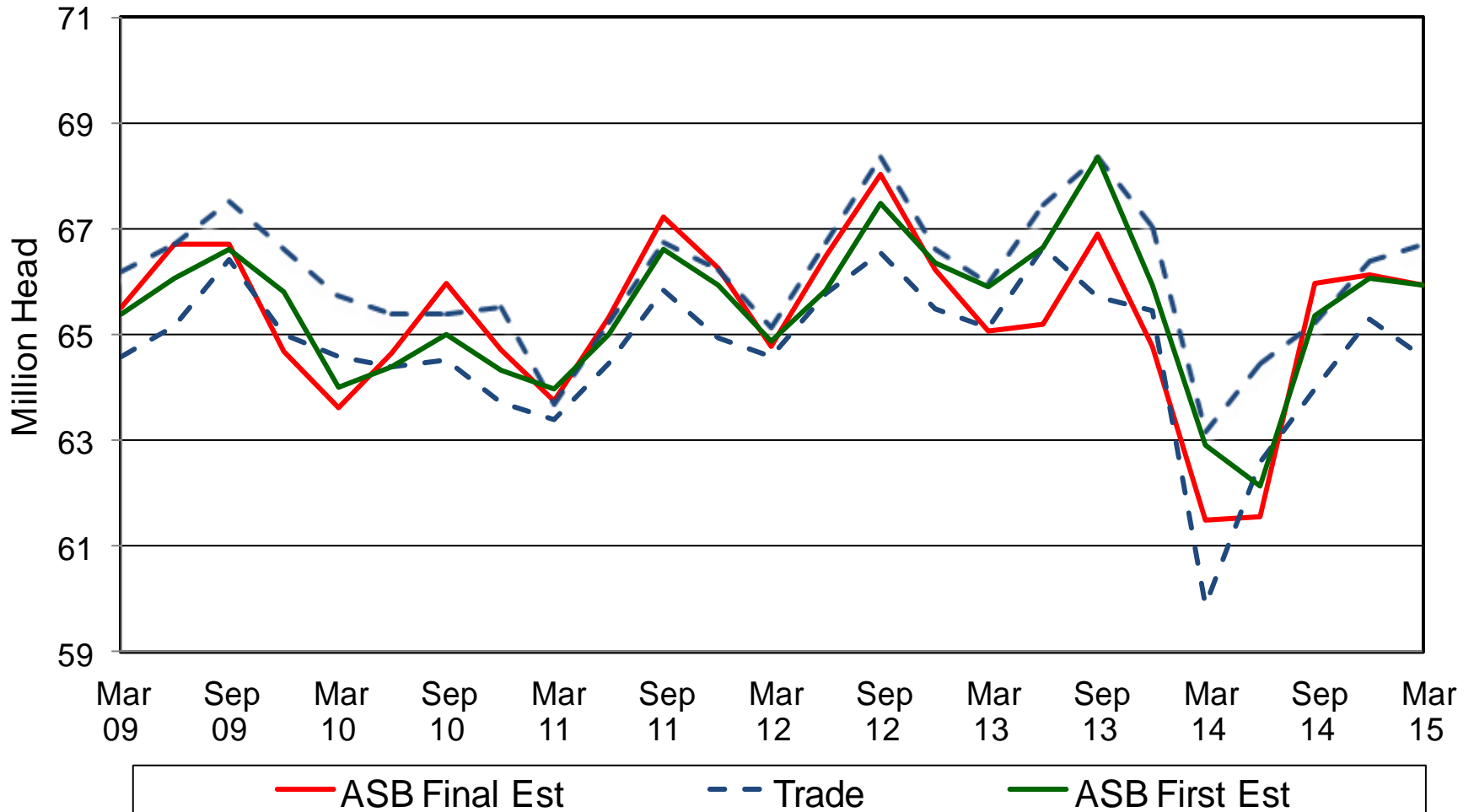
NASS Estimates Compared to Trade Expectations



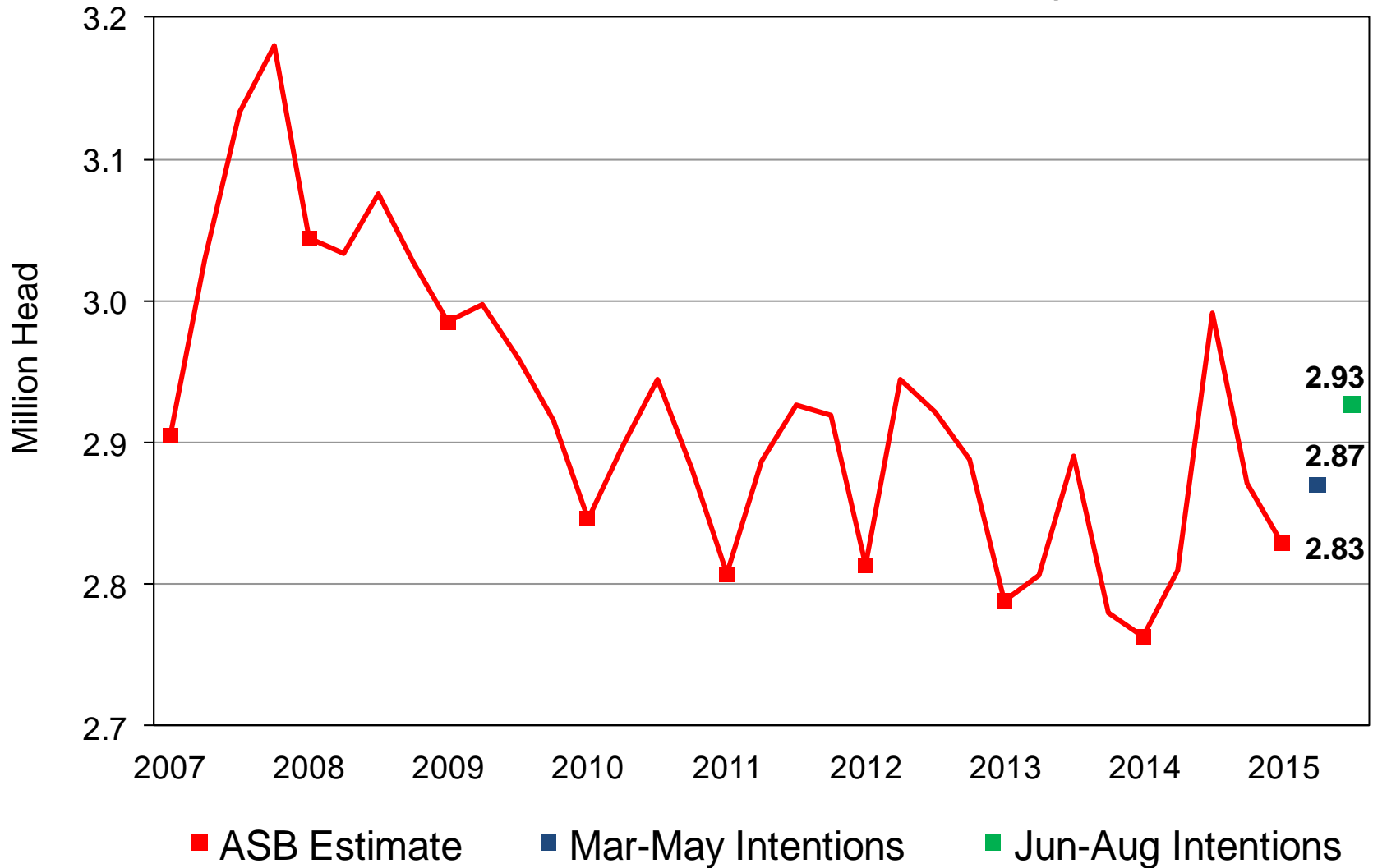
Percent of Previous Year

Inventory Items	NASS Estimate	Trade Average	Trade Range
All Hogs & Pigs	107.2%	106.8%	105.0% – 108.5%
Breeding Hogs	102.2%	103.5%	102.4% – 104.6%
Market Hogs	107.7%	107.2%	105.0% – 109.0%
Dec – Feb Pig Crop	109.2%	109.2%	104.7% – 111.2%
Farrowing Intentions			
Mar – May 2015	102.1%	103.1%	102.1% – 103.8%
Jun – Aug 2015	97.9%	102.7%	101.7% – 103.8%

All Hogs and Pigs Board vs Trade Expectations



U.S. Quarterly Sows Farrowed December - February



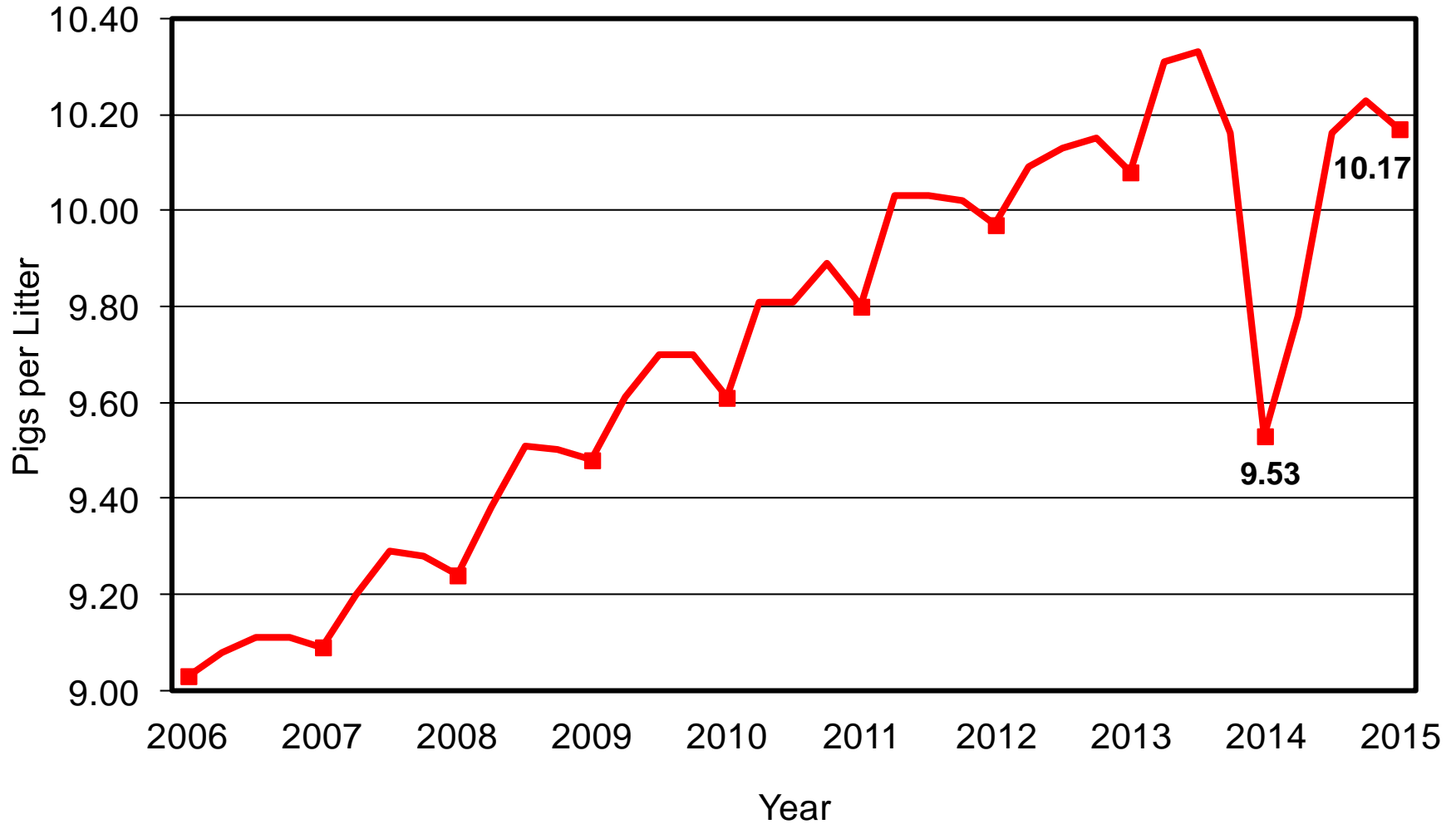


Breeding Herd Inventory Disposition & Utilization



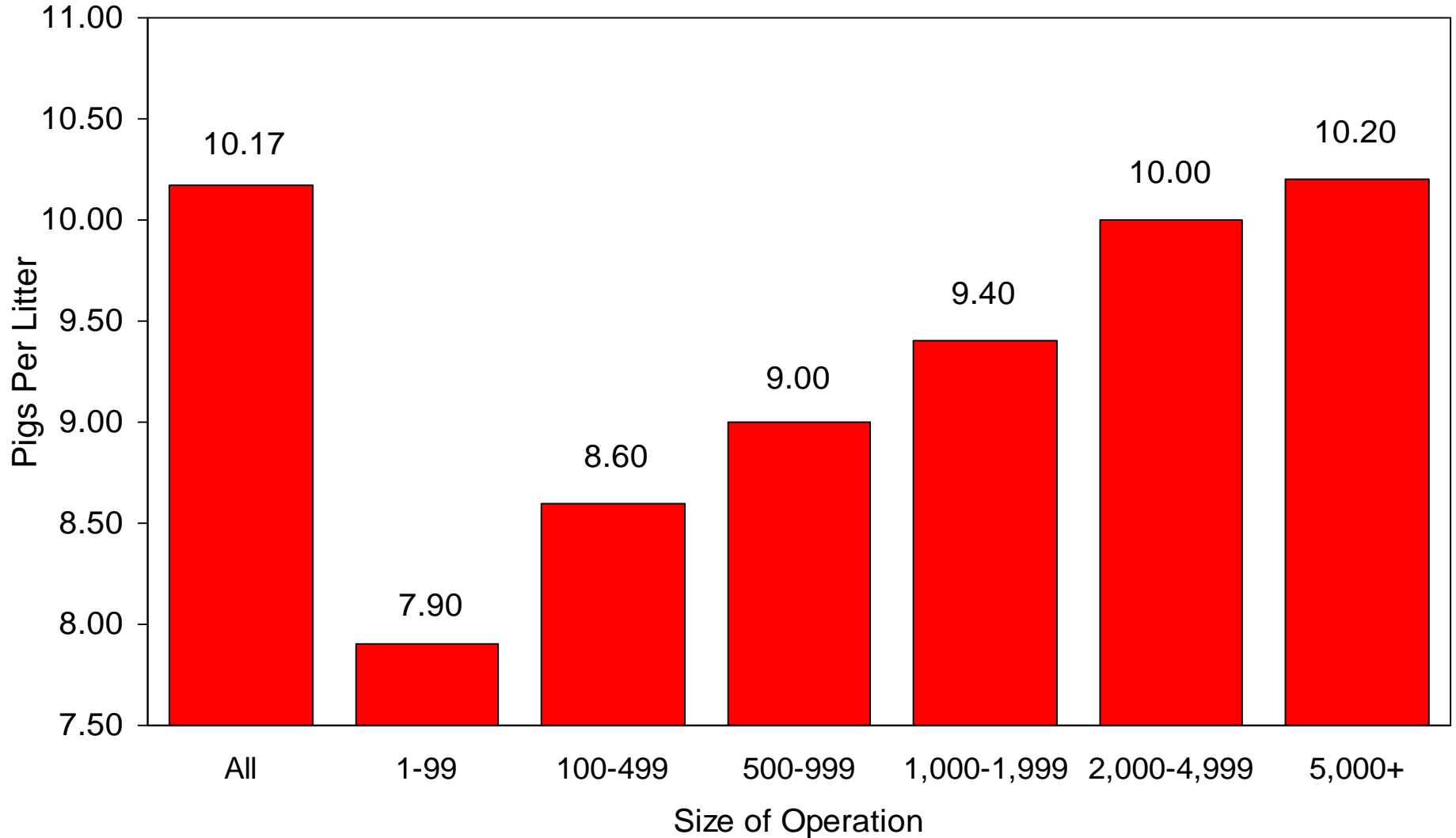
Year	Dec 1 Estimate	Slaughter	Additions	Mar 1 Estimate	Sow Utilization
	(000) Hd	(000) Hd	(000) Hd	(000) Hd	Percent
2006	6,031	830	844	6,045	47%
2007	6,116	913	946	6,149	47%
2008	6,233	953	920	6,200	49%
2009	6,062	877	807	5,992	49%
2010	5,850	846	756	5,760	49%
2011	5,778	792	802	5,788	49%
2012	5,803	823	840	5,820	48%
2013	5,819	805	819	5,834	48%
2014	5,757	779	873	5,851	48%
2015	5,939	791	834	5,982	48%

U.S. Quarterly Pigs per Litter December - February

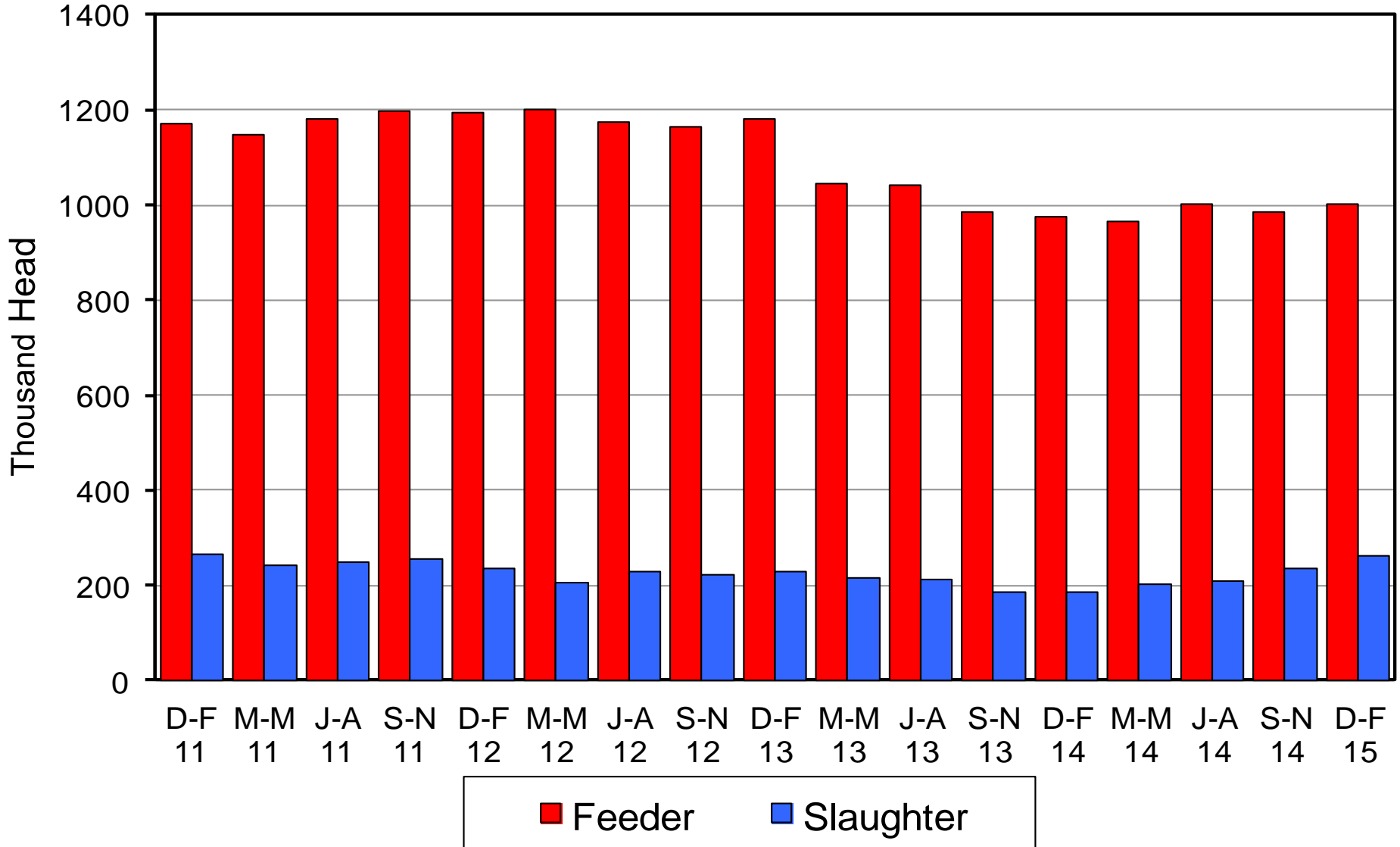




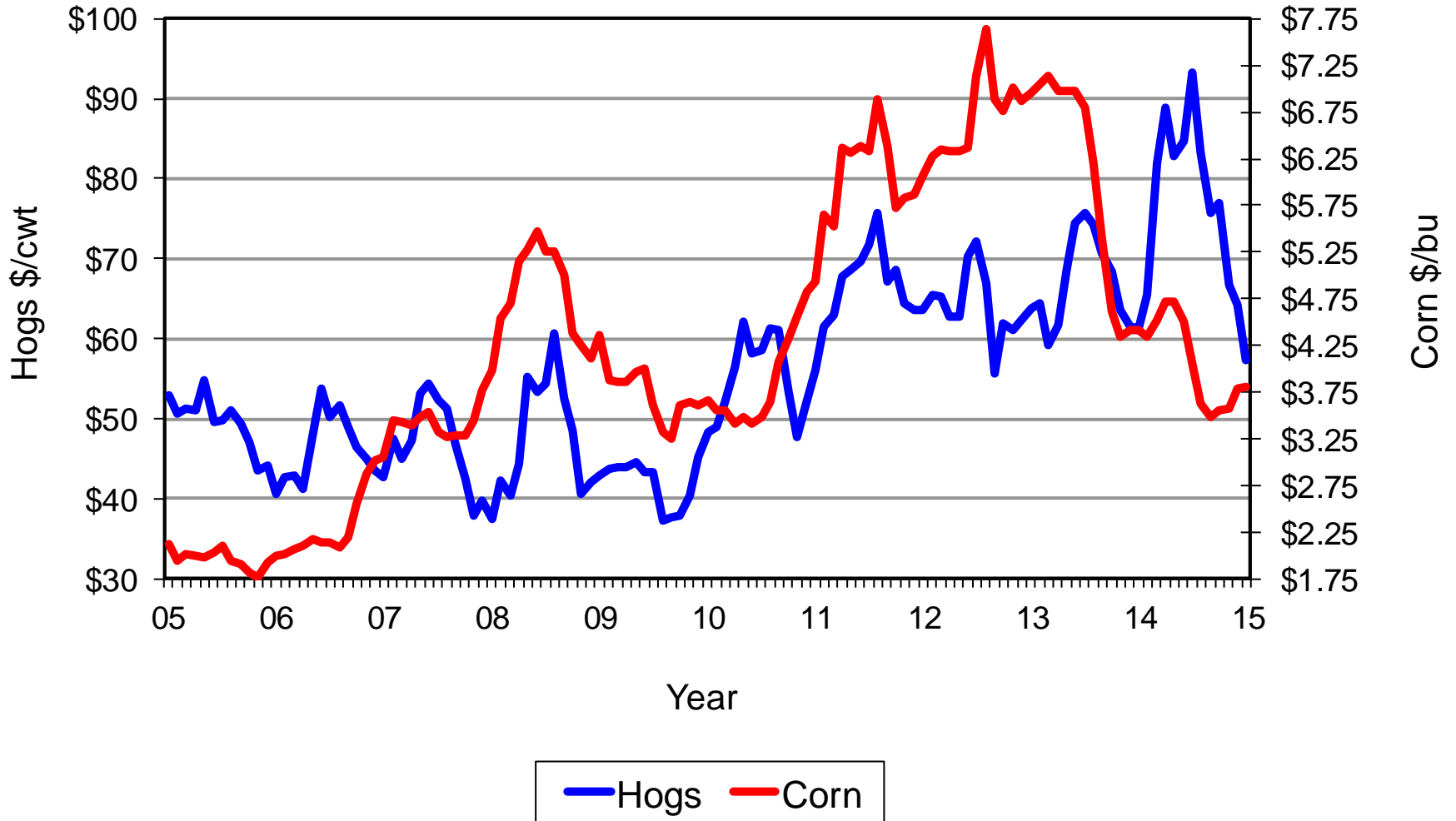
U.S. Pigs per Litter by Size of Operation December 2014 – February 2015



Canadian Imports by Quarter Feeder Pigs and Slaughter Hogs



U.S. Prices Received by Farmers for Hogs & Corn





United States Department of Agriculture
National Agricultural Statistics Service



Upcoming Reports

March 30	Agricultural Prices
March 31	Grain Stocks, Rice Stocks Prospective Plantings
April 1	CAIR: Grain Crushings
April 9	Crop Production
April 21	Milk Production
April 24	Cattle on Feed
April 30	Poultry – Production and Value Production, Disposition, & Income: Meat Animals, Milk



United States Department of Agriculture
National Agricultural Statistics Service



All Reports Available At
www.nass.usda.gov

For Questions Call or Email

202-720-3570

800-727-9540

nass@nass.usda.gov