



United States Department of Agriculture  
**National Agricultural Statistics Service**

---

---

**Acreage**  
**Grain Stocks**  
**Rice Stocks**

Executive Summary

Lance Honig, Chief  
Crops Branch

June 30, 2015

12:00 P.M.



# Contents

Field Crops	Stocks
Planted Acres	Corn
Harvested Acres	Soybeans
	Sorghum
	Rice
	All Wheat
	Barley
	Oats



# Survey Overview

	June Ag Survey	June Area Survey
Survey Type	Farmer Reported	Farmer Reported
Collection Method	Mail, Phone, Internet, Personal Interview	Personal Interview
Crops Included	Field Crops	Field Crops
States	All except HI	All except AK and HI
Sample Size	70,625 farms	10,964 segments
Collection Period	May 24– June 17	May 30– June 16



# Principal Crops Planted Acreage

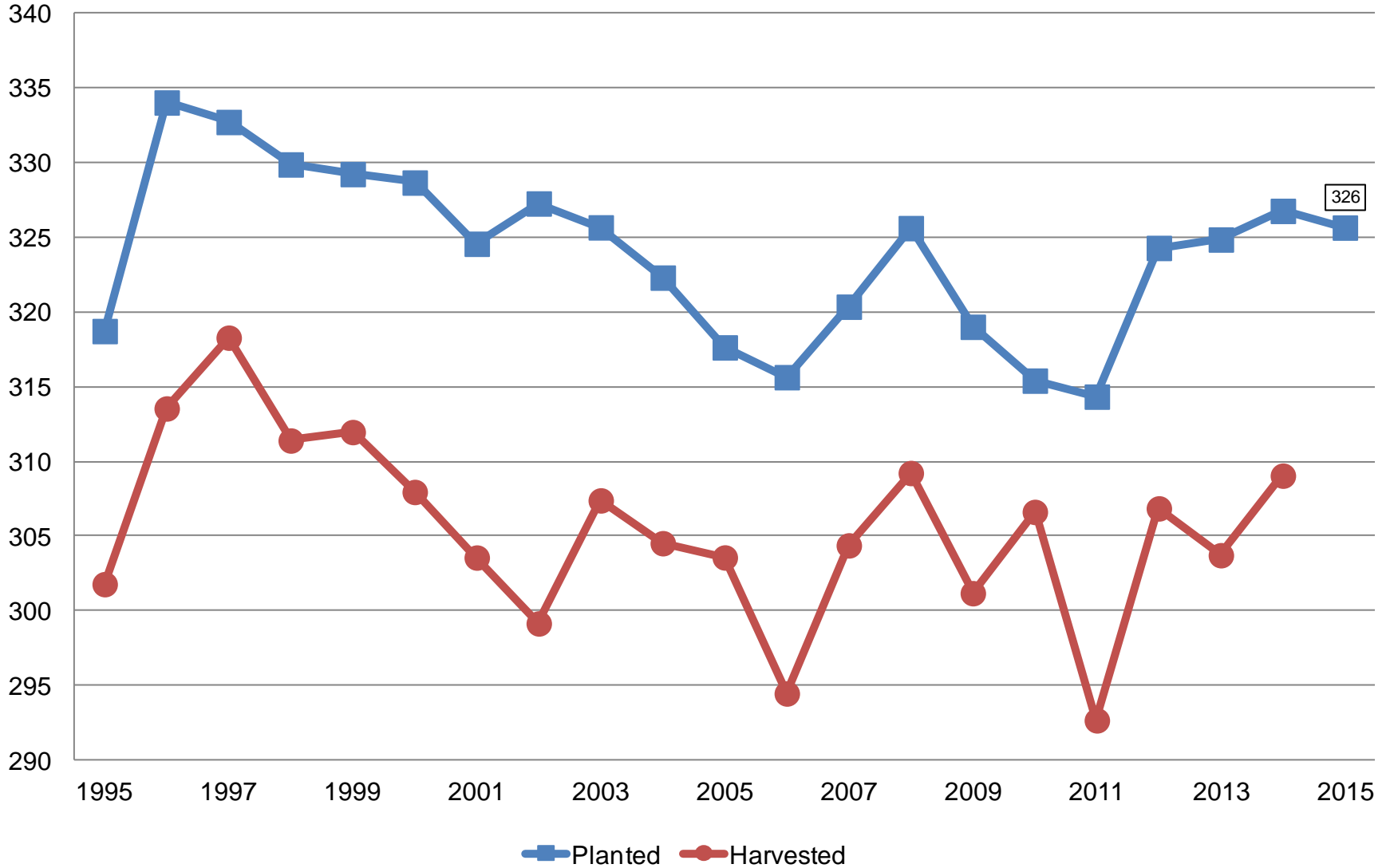
## United States

Year	Principal Crops	Change From Previous Year
	<i>Million Acres</i>	
2006	315.6	-2.0
2007	320.4	+4.7
2008	325.6	+5.3
2009	319.0	-6.6
2010	315.4	-3.6
2011	314.3	-1.1
2012	324.3	+10.0
2013	324.9	+0.6
2014	326.8	+1.9
2015	325.7	-1.1



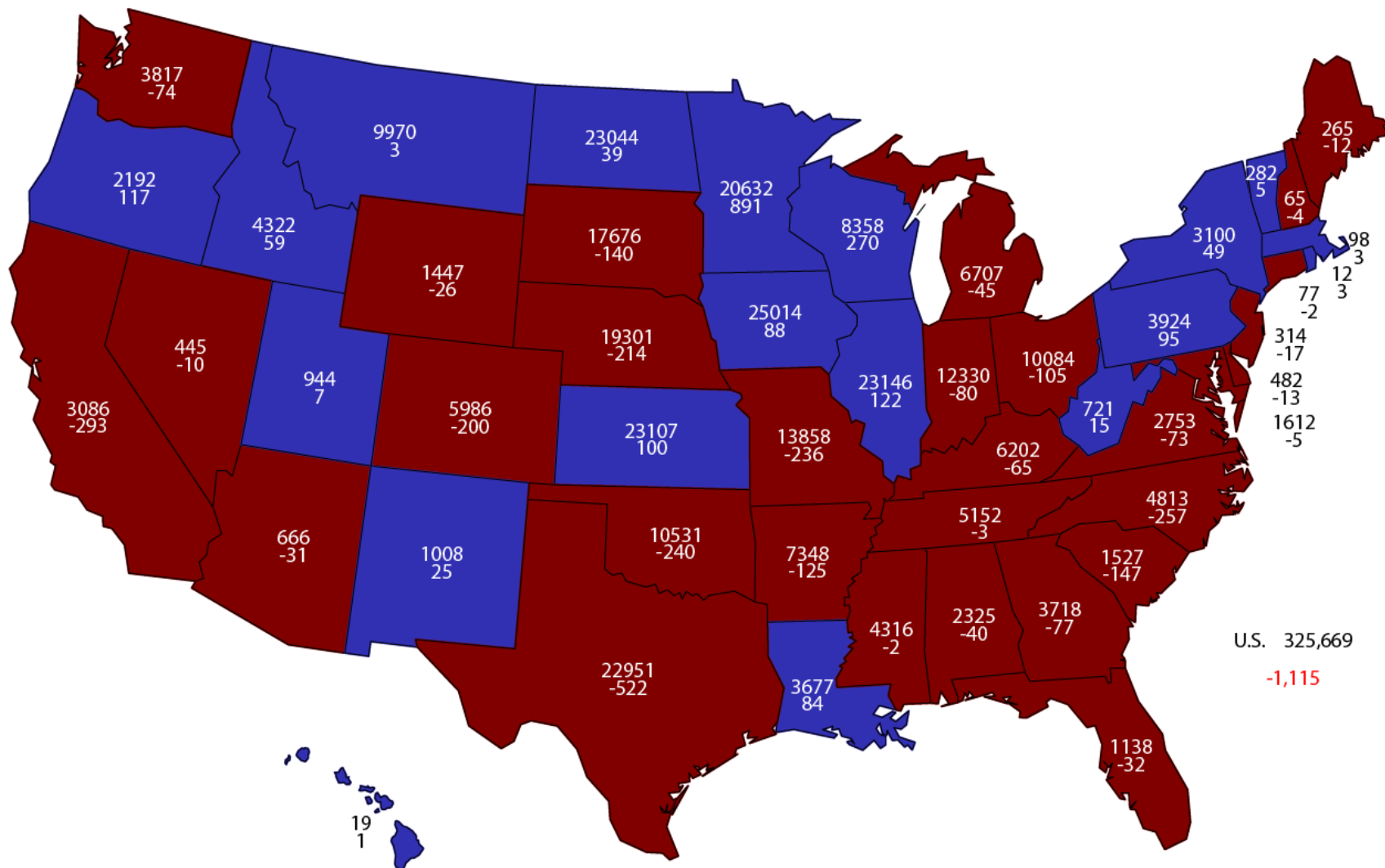
# Principal Crops United States

Million Acres



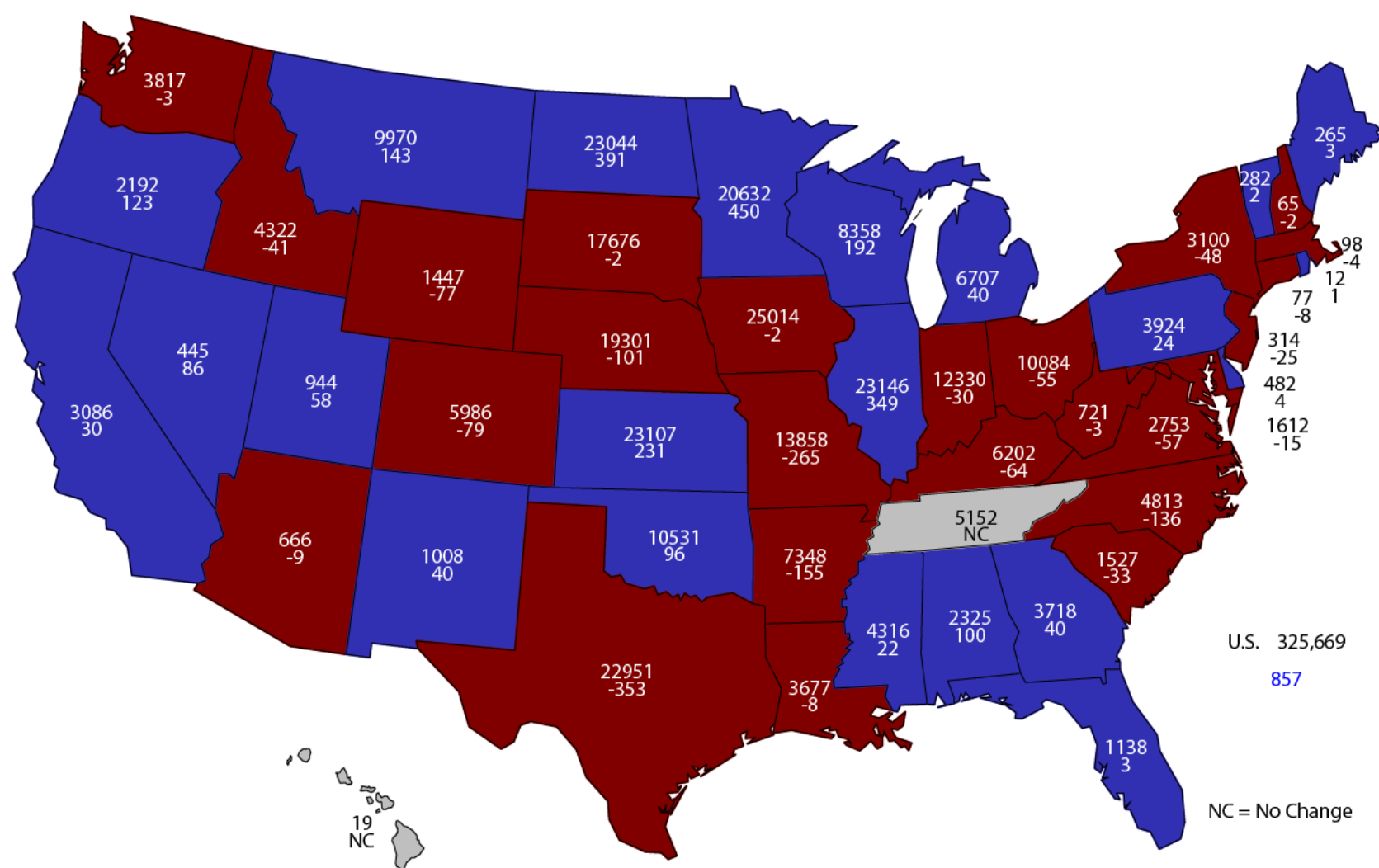
# 2015 Principal Crops Planted Area

(000) Acres and Change From Previous Year



# 2015 Principal Crops Planted Area

(000) Acres and Change From Previous Estimate



U.S. 325,669  
857

NC = No Change



# June 2015 Acreage

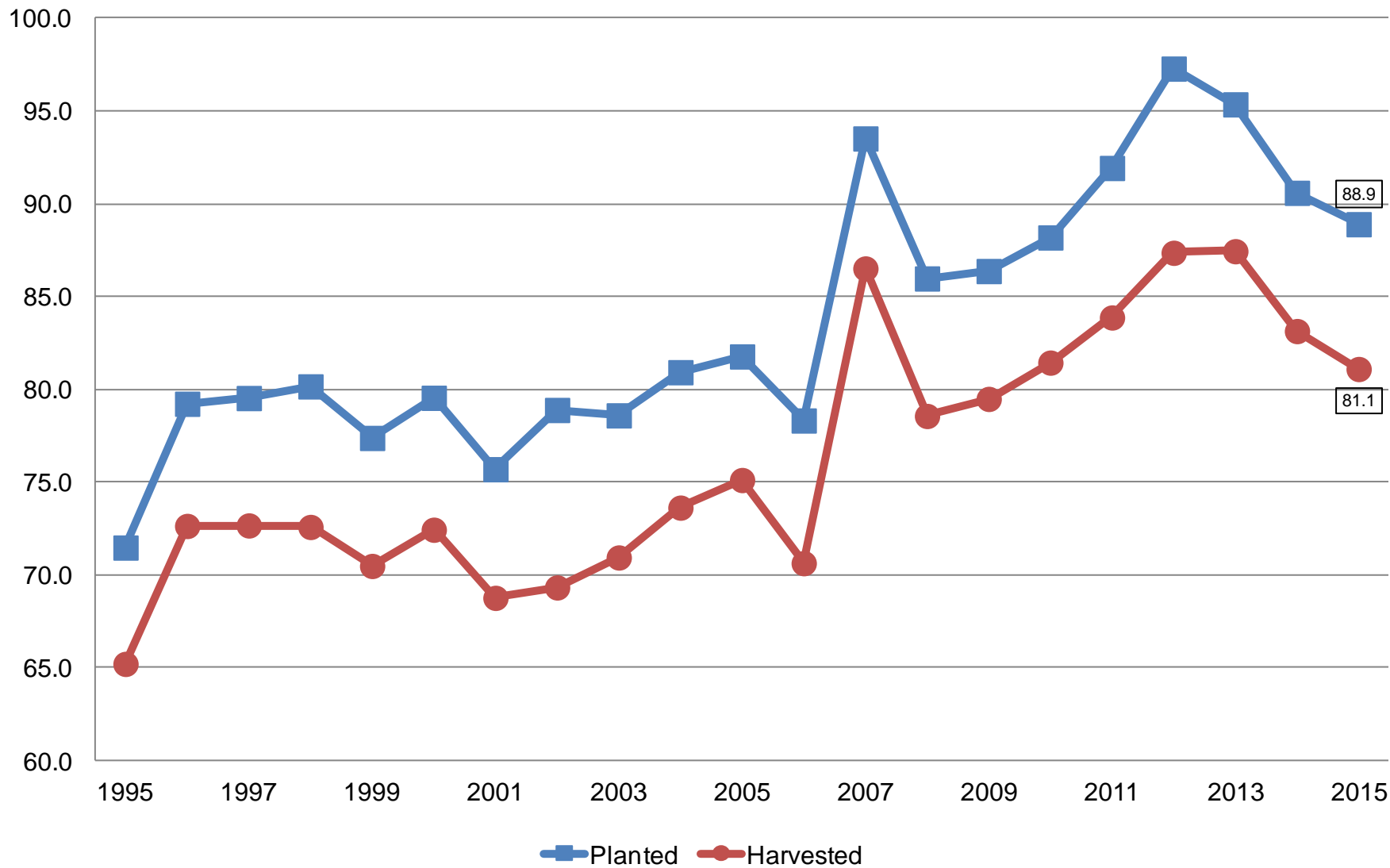
Crop	Unit	June 2015	% Change From Previous Estimate	% Change From Previous Season
Corn				
Planted	Mil Ac	88.9	-0.3	-1.9
Harvested	Mil Ac	81.1	NA	-2.4





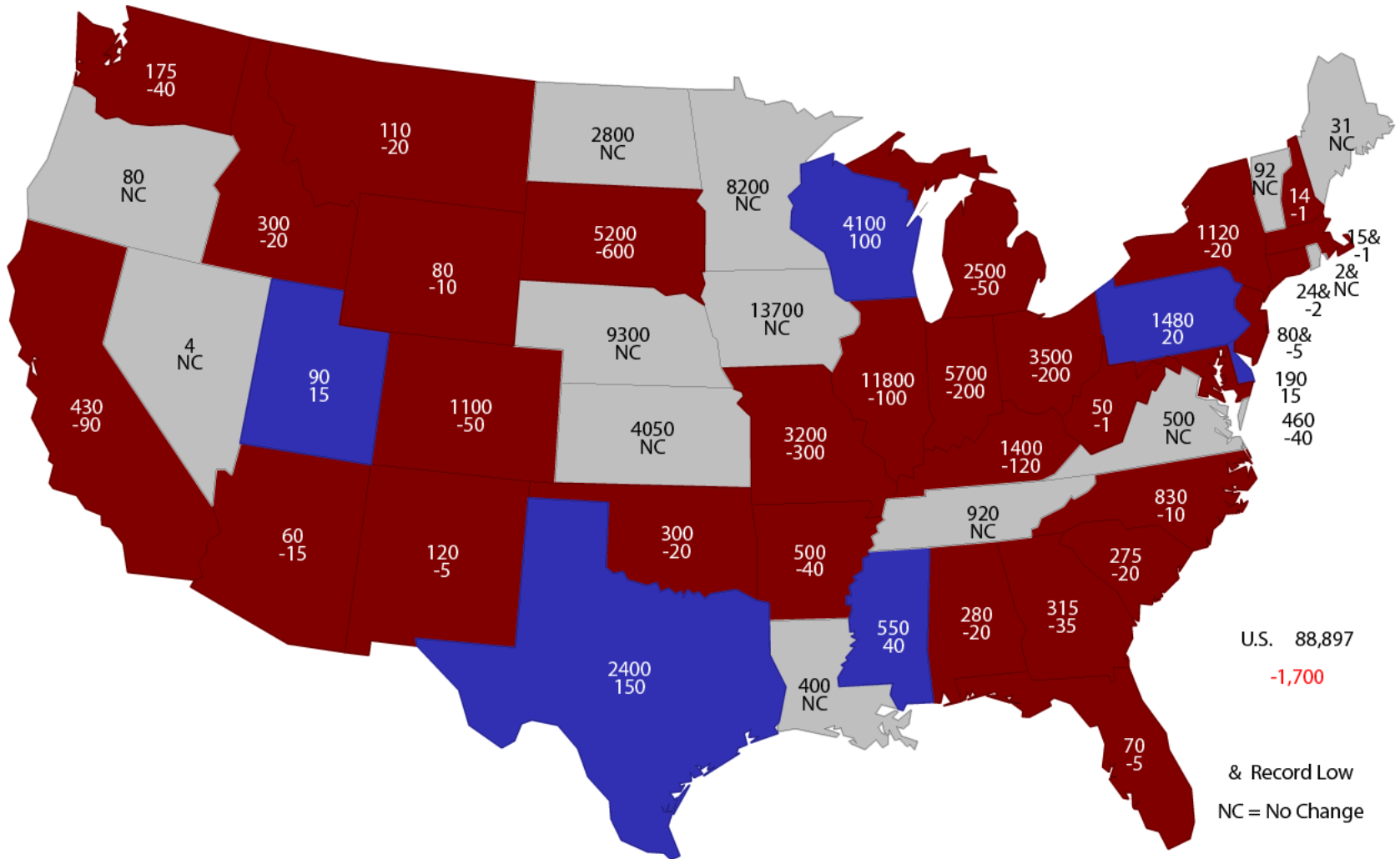
# Corn Acres United States

Million Acres



# 2015 Corn Planted Area

(000) Acres and Change From Previous Year



U.S. 88,897  
-1,700

& Record Low  
NC = No Change



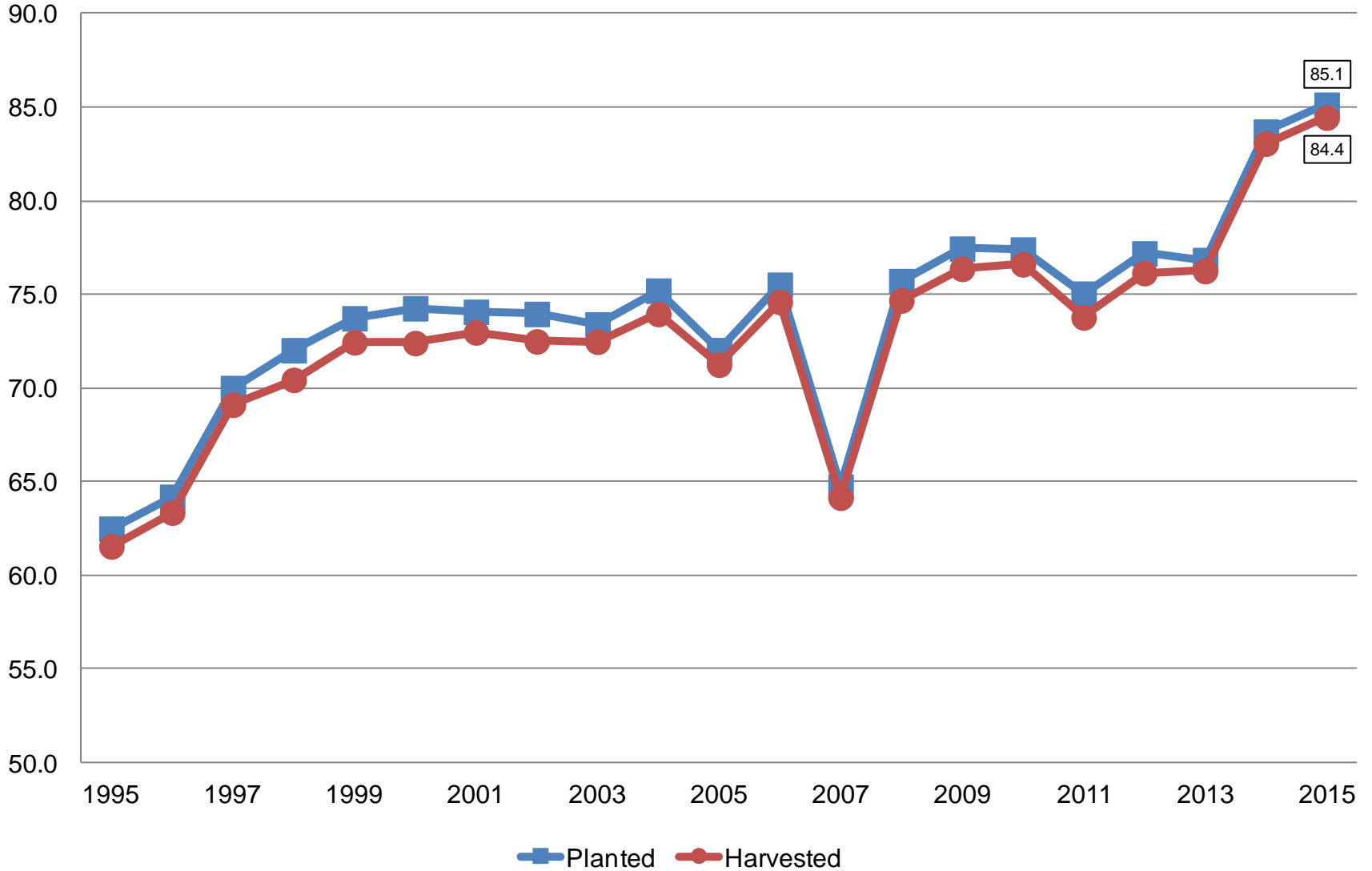
# June 2015 Acreage

Crop	Unit	June 2015	% Change From Previous Estimate	% Change From Previous Season
Soybeans				
Planted	Mil Ac	85.1	+0.6	+1.7
Harvested	Mil Ac	84.4	NA	+1.7



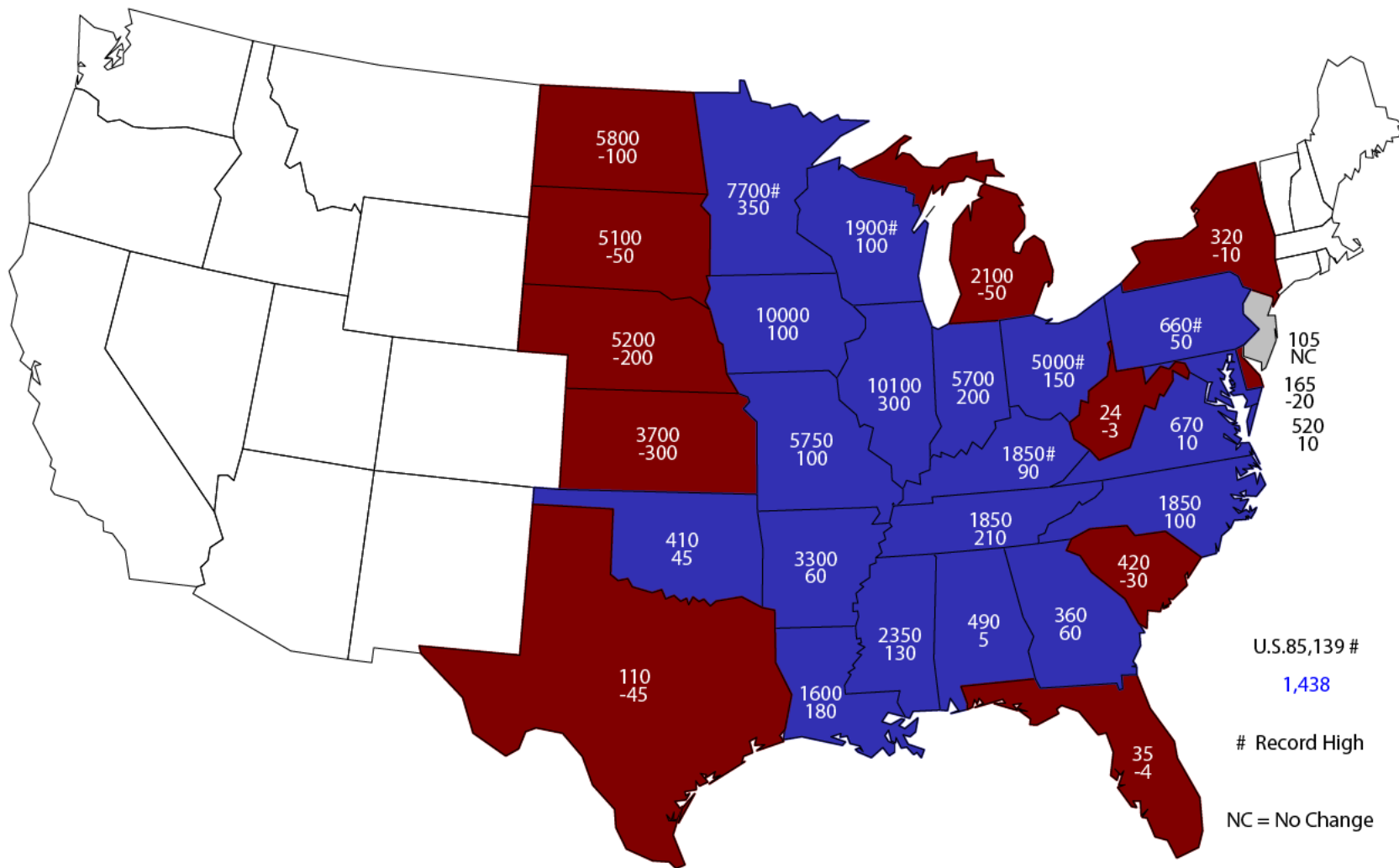
# Soybean Acres United States

Million Acres



# 2015 Soybean Planted Area

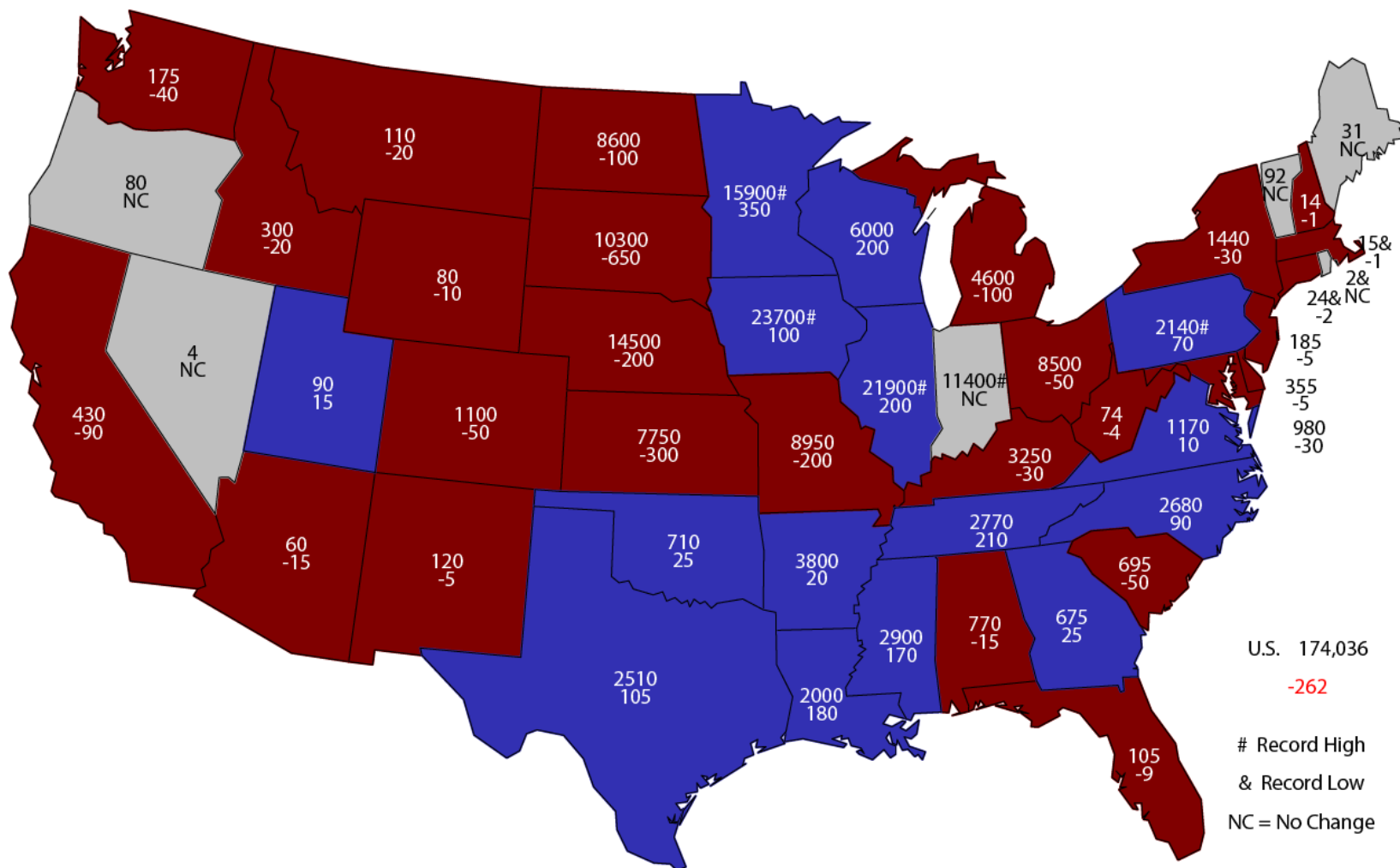
(000) Acres and Change From Previous Year



U.S. 85,139 #  
 1,438  
 # Record High  
 NC = No Change

# 2015 Combined Corn & Soybean Planted Area

(000) Acres and Change From Previous Year



U.S. 174,036  
 -262  
 # Record High  
 & Record Low  
 NC = No Change



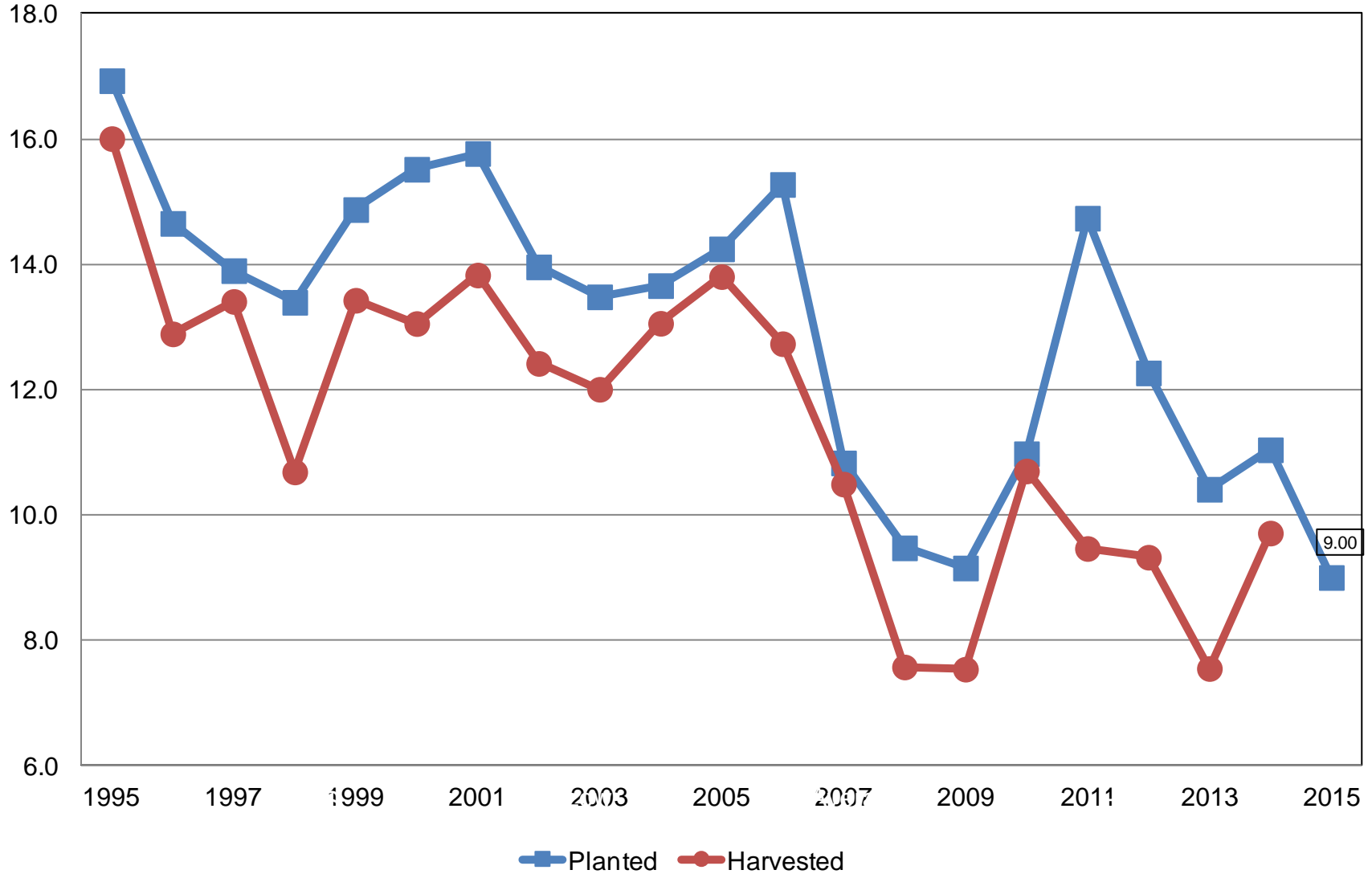
# June 2015 Acreage

Crop	Unit	June 2015	% Change From Previous Estimate	% Change From Previous Season
All Cotton				
Planted	Mil Ac	9.00	-5.8	-18.5
American Pima				
Planted	Thou Ac	148	-1.3	-23.1
Upland Cotton				
Planted	Mil Ac	8.85	-5.8	-18.4



# All Cotton Acres United States

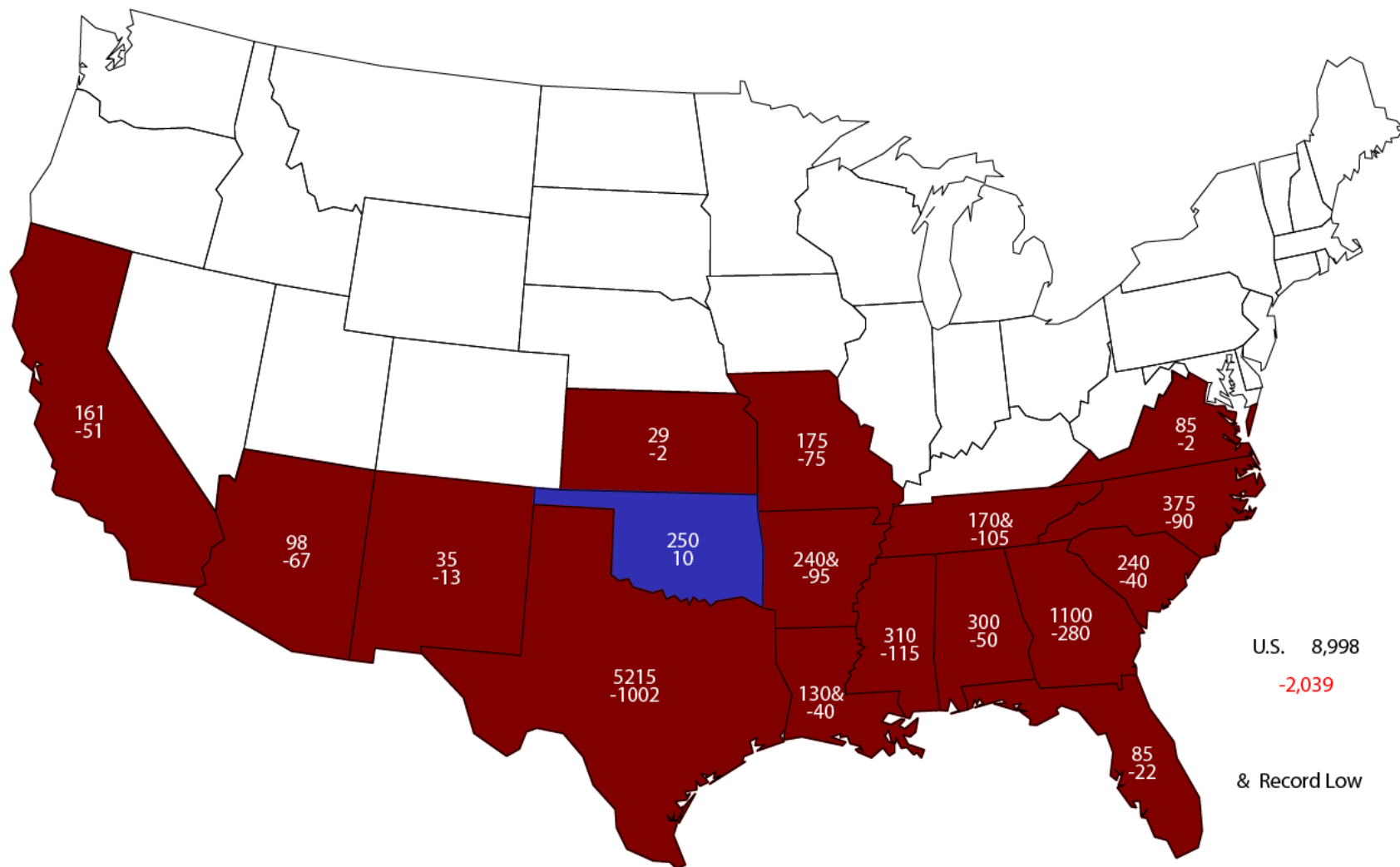
Million Acres





# 2015 All Cotton Planted Area

## Acres (000) and Change From Previous Year



U.S. 8,998  
 -2,039  
 & Record Low



# June 2015 Acreage

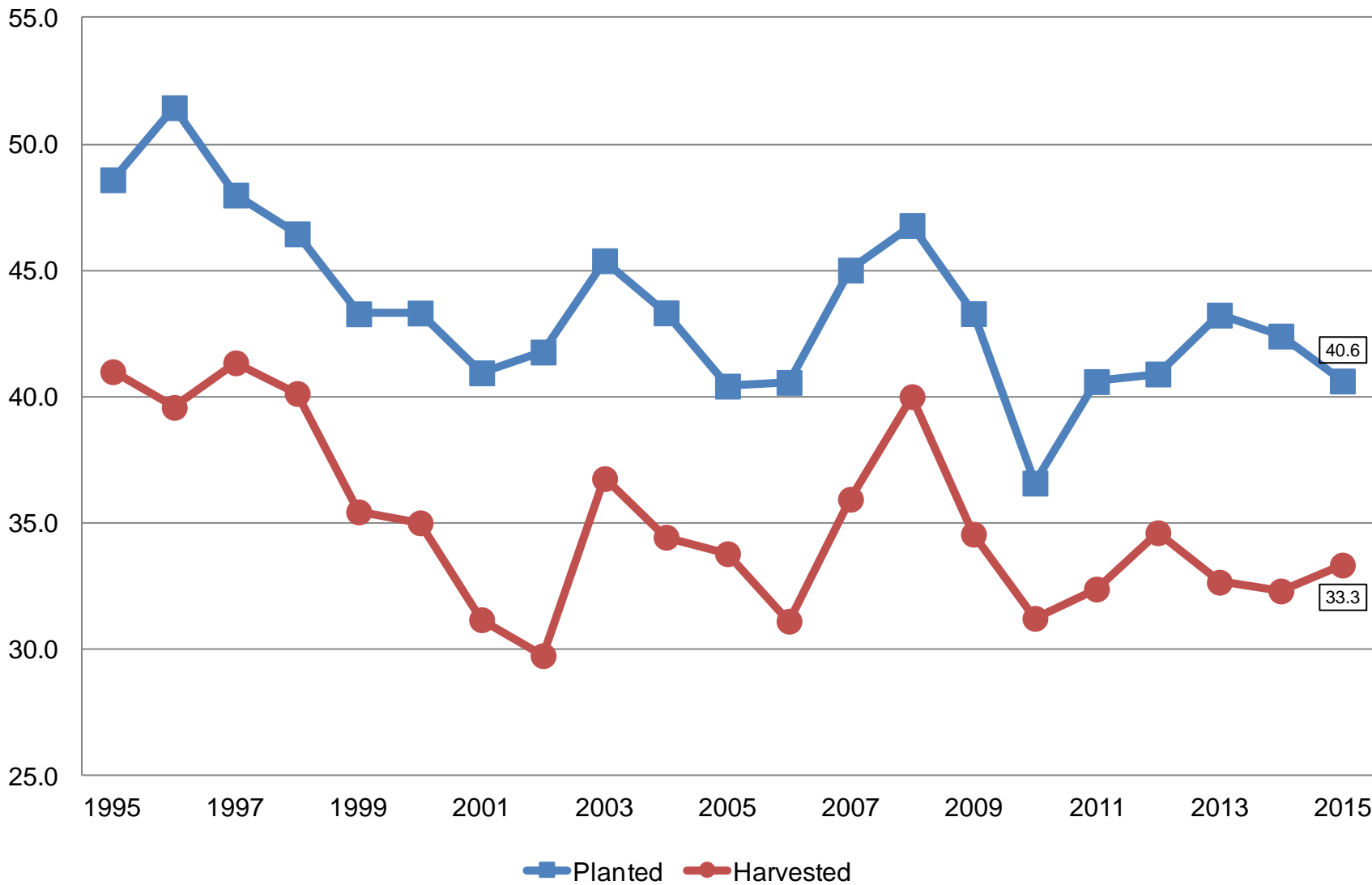
Crop	Unit	June 2015	% Change From Previous Estimate	% Change From Previous Season
Winter Wheat				
Planted	Mil Ac	40.6	-0.3	-4.2
Harvested	Mil Ac	33.3	-1.5	+3.2
Spring Wheat				
Planted	Mil Ac	13.5	+4.1	+3.7
Harvested	Mil Ac	13.2	NA	+3.7
Durum Wheat				
Planted	Mil Ac	1.95	+18.6	+39.8
Harvested	Mil Ac	1.91	NA	+42.7
All Wheat				
Planted	Mil Ac	56.1	+1.3	-1.3
Harvested	Mil Ac	48.5	NA	+4.5



# Winter Wheat Acres

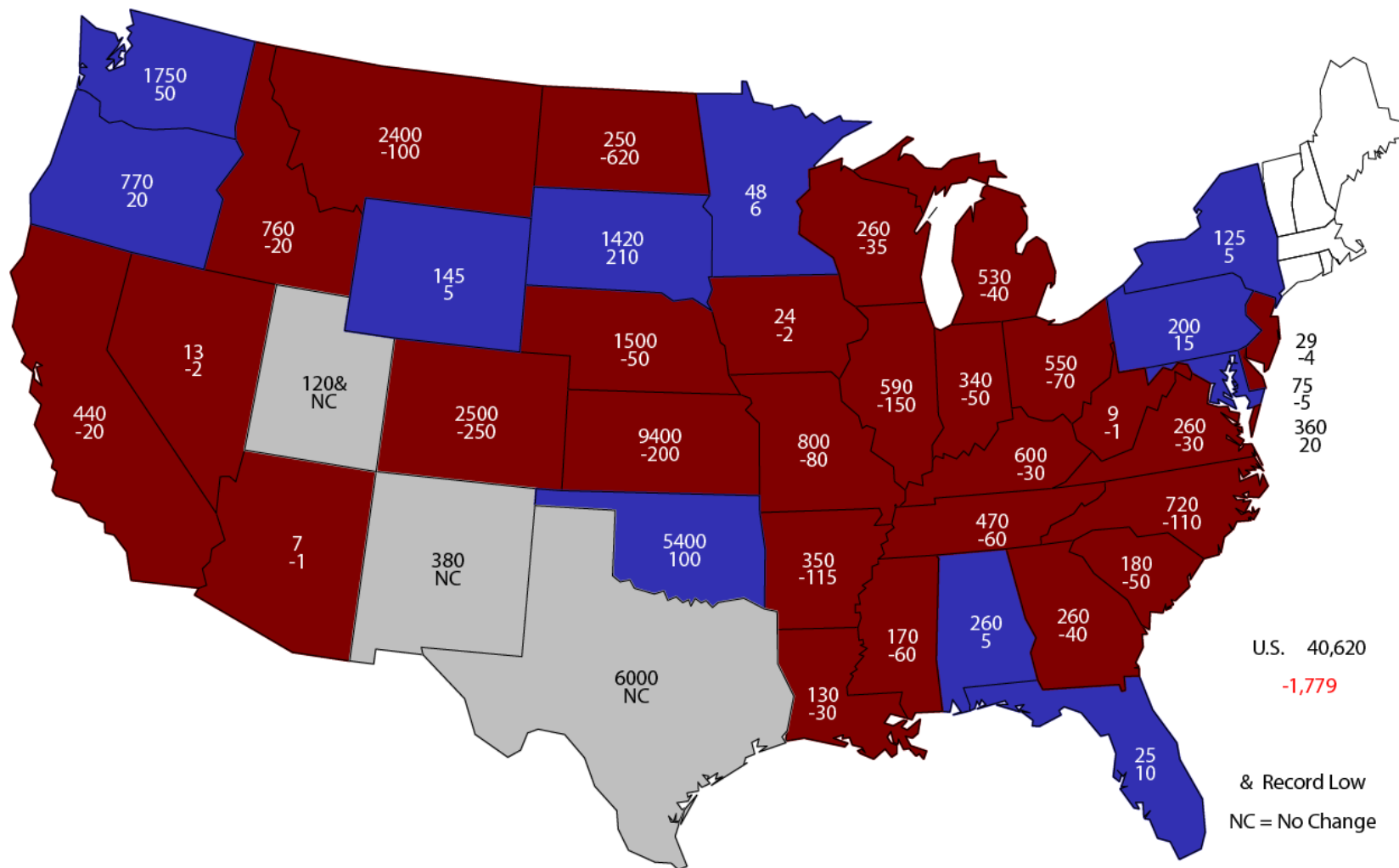
## United States

Million Acres



# 2015 Winter Wheat Planted Area

(000) Acres and Change From Previous Year

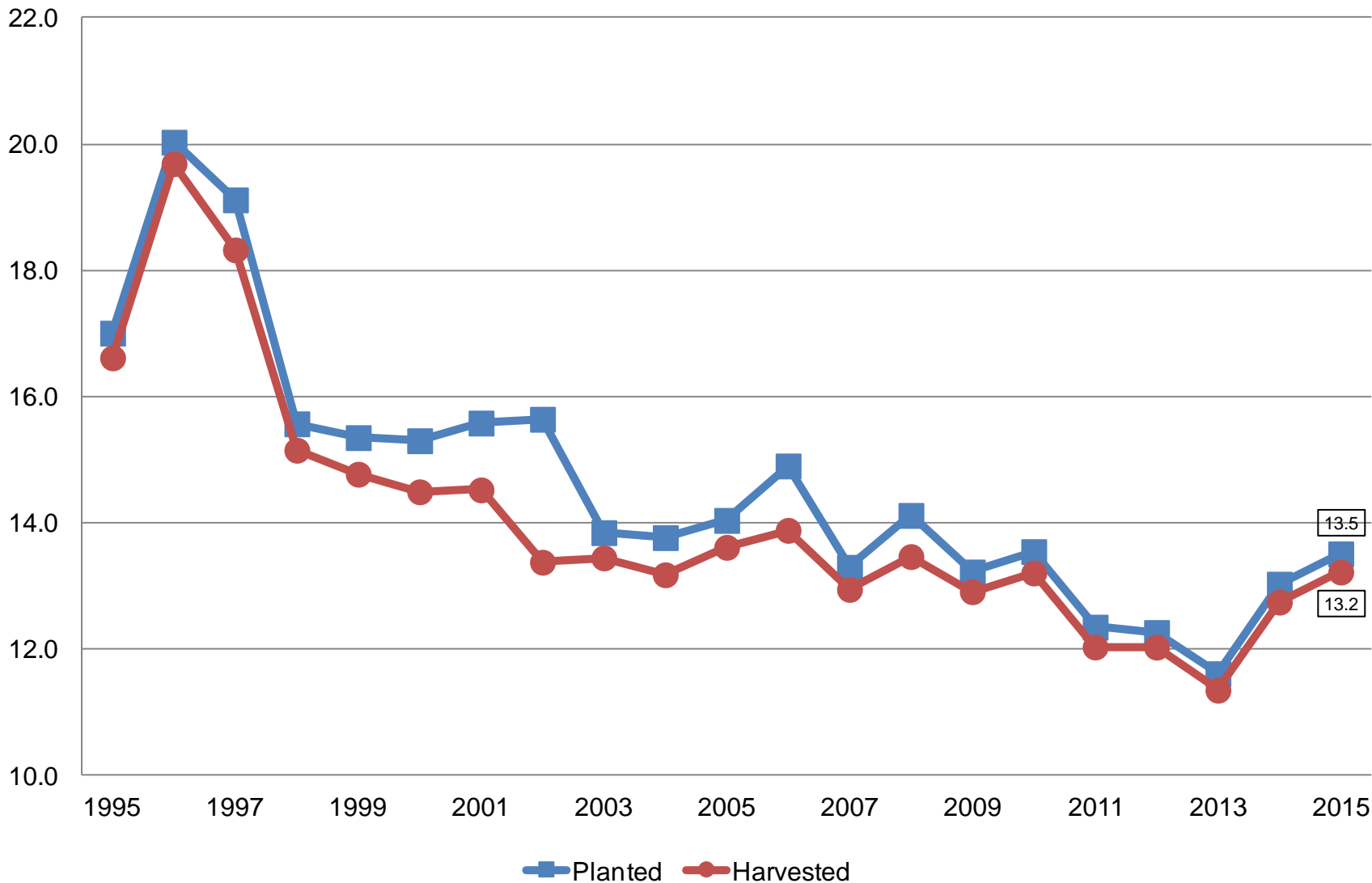




# Other Spring Wheat Acres

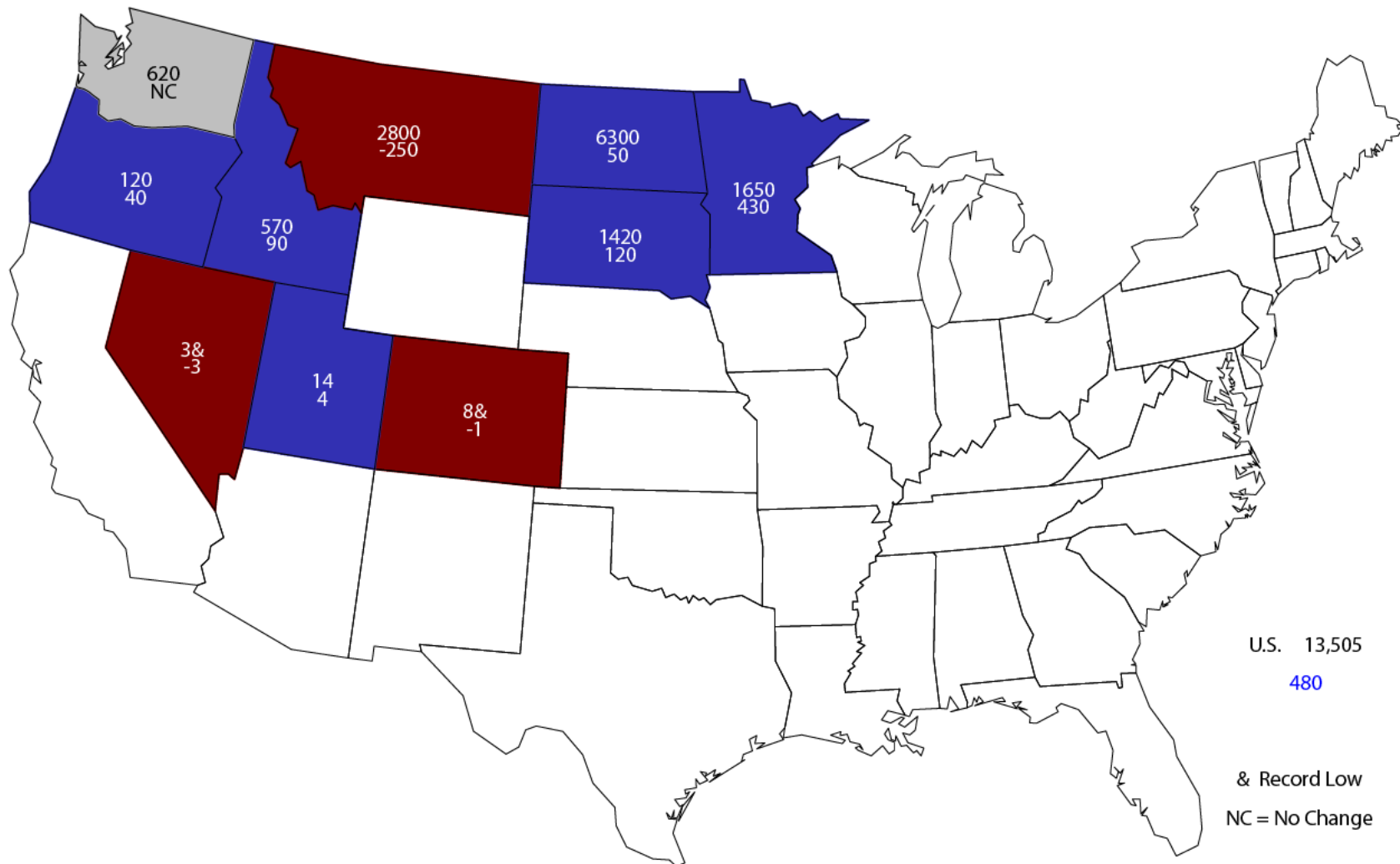
## United States

Million Acres



# 2015 Other Spring Wheat Planted Area

(000) Acres and Change From Previous Year



U.S. 13,505  
480

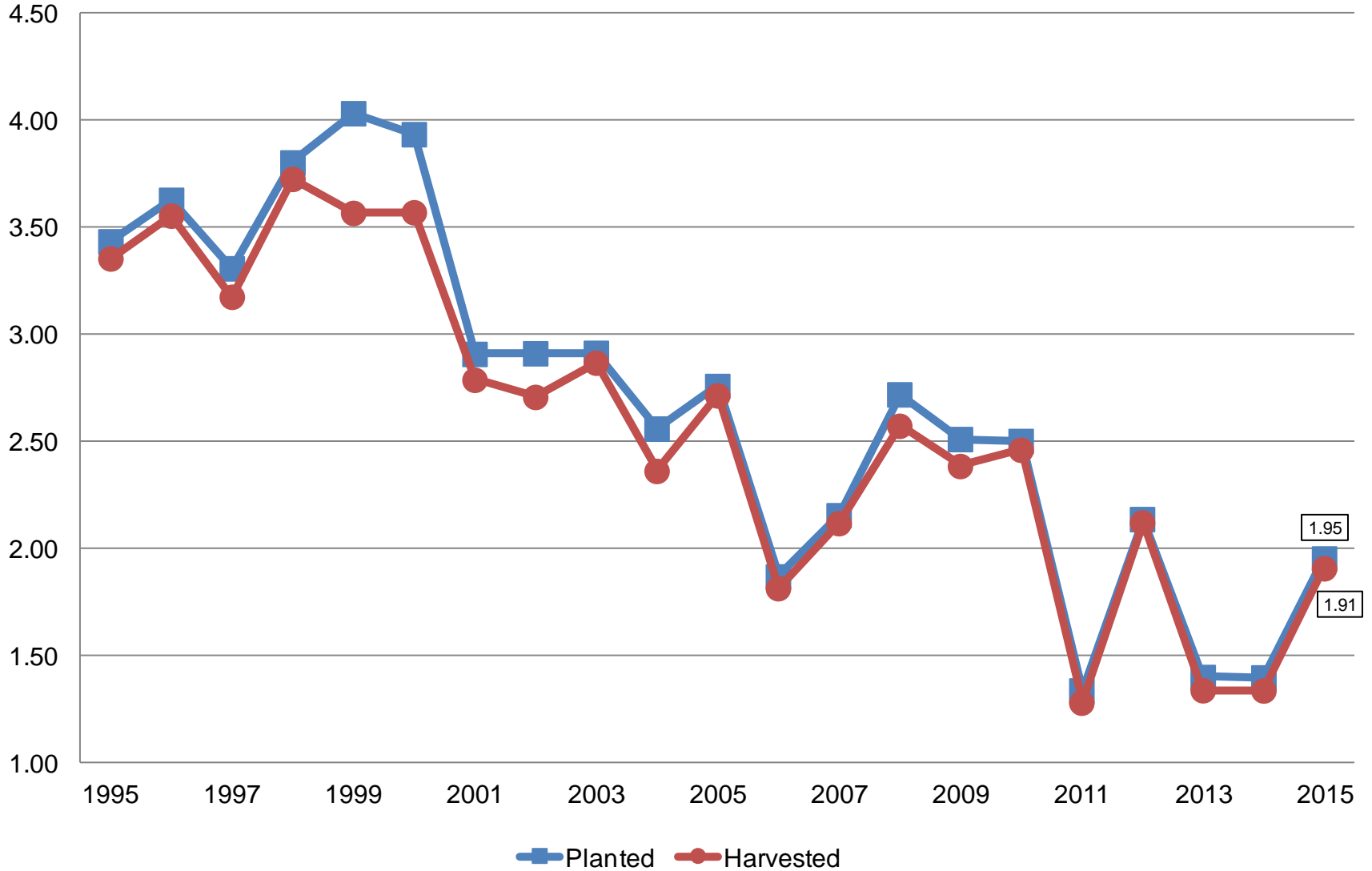
& Record Low  
NC = No Change



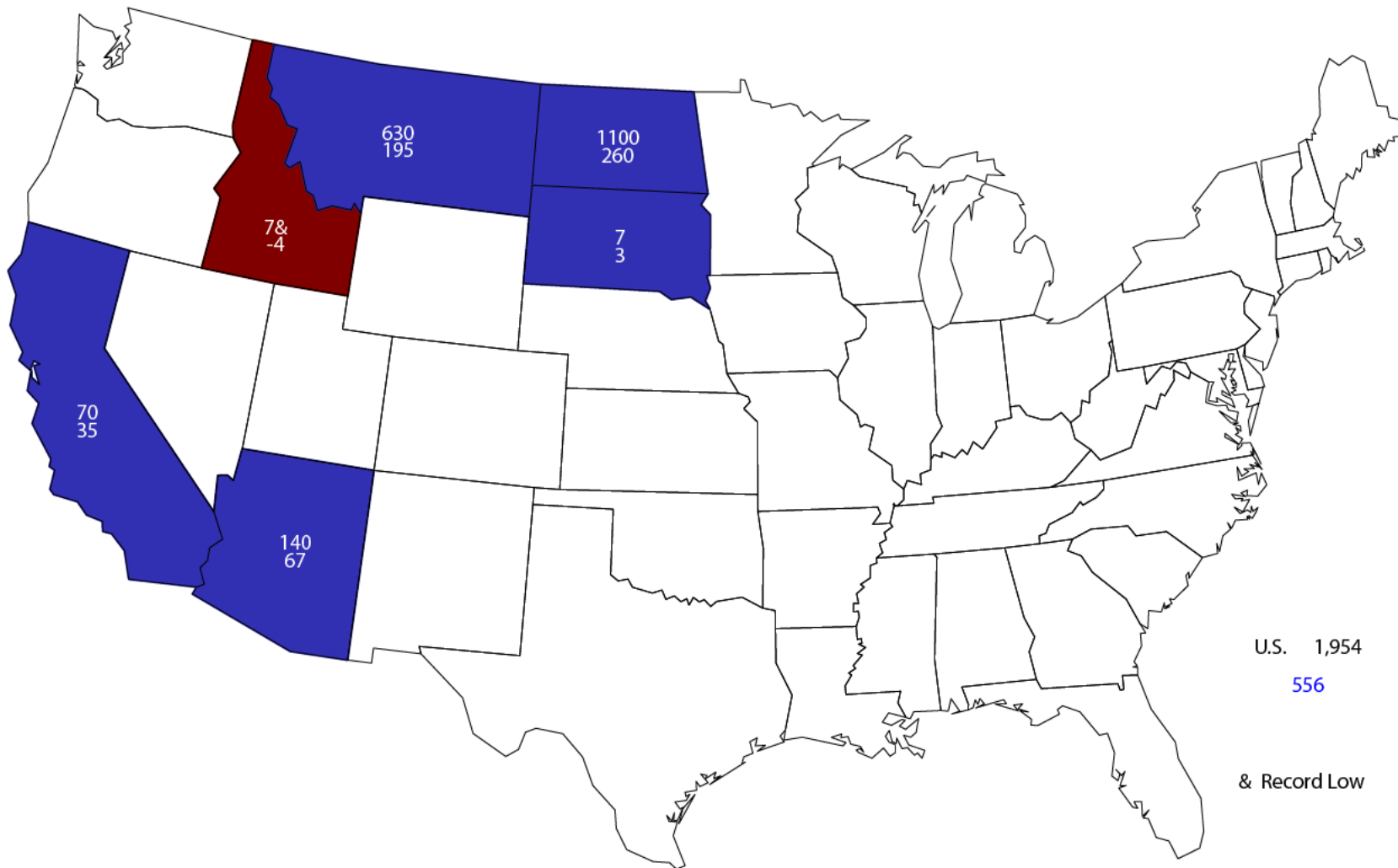
# Durum Wheat Acres

## United States

Million Acres



# 2015 Durum Wheat Planted Area (000) Acres and Change From Previous Year







# June 2015 Acreage

Crop	Unit	June 2015	% Change From Previous Estimate	% Change From Previous Season
Planted Area				
Sorghum	Mil Ac	8.84	+11.9	+23.8
Oats	Mil Ac	3.06	+4.5	+12.5
Barley	Mil Ac	3.41	+4.8	+14.7
Harvested Area				
All Hay	Mil Ac	56.5	-1.0	-1.0
Alfalfa	Mil Ac	18.3	NA	-0.6
Other Hay	Mil Ac	38.2	NA	-1.2



# June 2015 Acreage

Crop	Unit	June 2015	% Change From Previous Estimate	% Change From Previous Season
Planted Area				
Rice	Mil Ac	2.77	-5.1	-5.9
Peanuts	Mil Ac	1.60	+8.0	+18.2
Sugarbeets	Mil Ac	1.16	-1.5	+0.1
Dry Beans	Mil Ac	1.71	-2.0	-0.6
Potatoes, Fall	Thou Ac	955	NA	+2.0
Potatoes, Summer	Thou Ac	49.3	NA	-2.2
Sweet Potatoes	Thou Ac	139	+0.7	+1.0
Harvested Area				
Sugarcane	Thou Ac	893	NA	+2.6
Tobacco	Thou Ac	321	-7.0	-15.2



# June 2015 Acreage

Crop	Unit	June 2015	% Change From Previous Estimate	% Change From Previous Season
Planted				
Sunflower	Mil Ac	1.68	-5.8	+7.8
Canola	Mil Ac	1.57	+1.2	-8.3
Flaxseed	Thou Ac	420	+4.7	+35.0
Safflower	Thou Ac	147	NA	-19.0
Mustard Seed	Thou Ac	50.5	NA	+50.3
Rye	Mil Ac	1.47	NA	+2.2
Proso Millet	Thou Ac	455	NA	-9.9
Rapeseed	Thou Ac	1.80	NA	-18.2

# Biotech Varieties

## % of All Planted Acres

Crop	Herbicide Resistant Only		Insect Resistant (Bt) Only	
	2014	2015	2014	2015
Corn	13	12	4	4
Soybeans	94	94	-	-
Upland Cotton	12	10	5	5
Crop	Stacked Gene		All Biotech Varieties	
	2014	2015	2014	2015
Corn	76	77	93	92
Soybeans	-	-	94	94
Upland Cotton	79	79	96	94



## Percent of Acres Remaining To Be Planted

Crop	2013	2014	2015
Corn	3.4	2.3	1.7
Soybeans	26.9	13.2	15.5
Other Spring Wheat	6.3	7.0	0.6
Durum Wheat	14.2	14.8	3.6



# June Grain Stocks

Crop	Unit	June 2015	% Change From Previous Estimate	% Change From Previous Year
Stocks				
Corn	Bil Bu	4.45	NA	+15.4
Soybeans	Mil Bu	625	NA	+54.4
Sorghum	Mil Bu	33.2	NA	-64.1
Rice	Mil Cwt	71.3	NA	-19.8

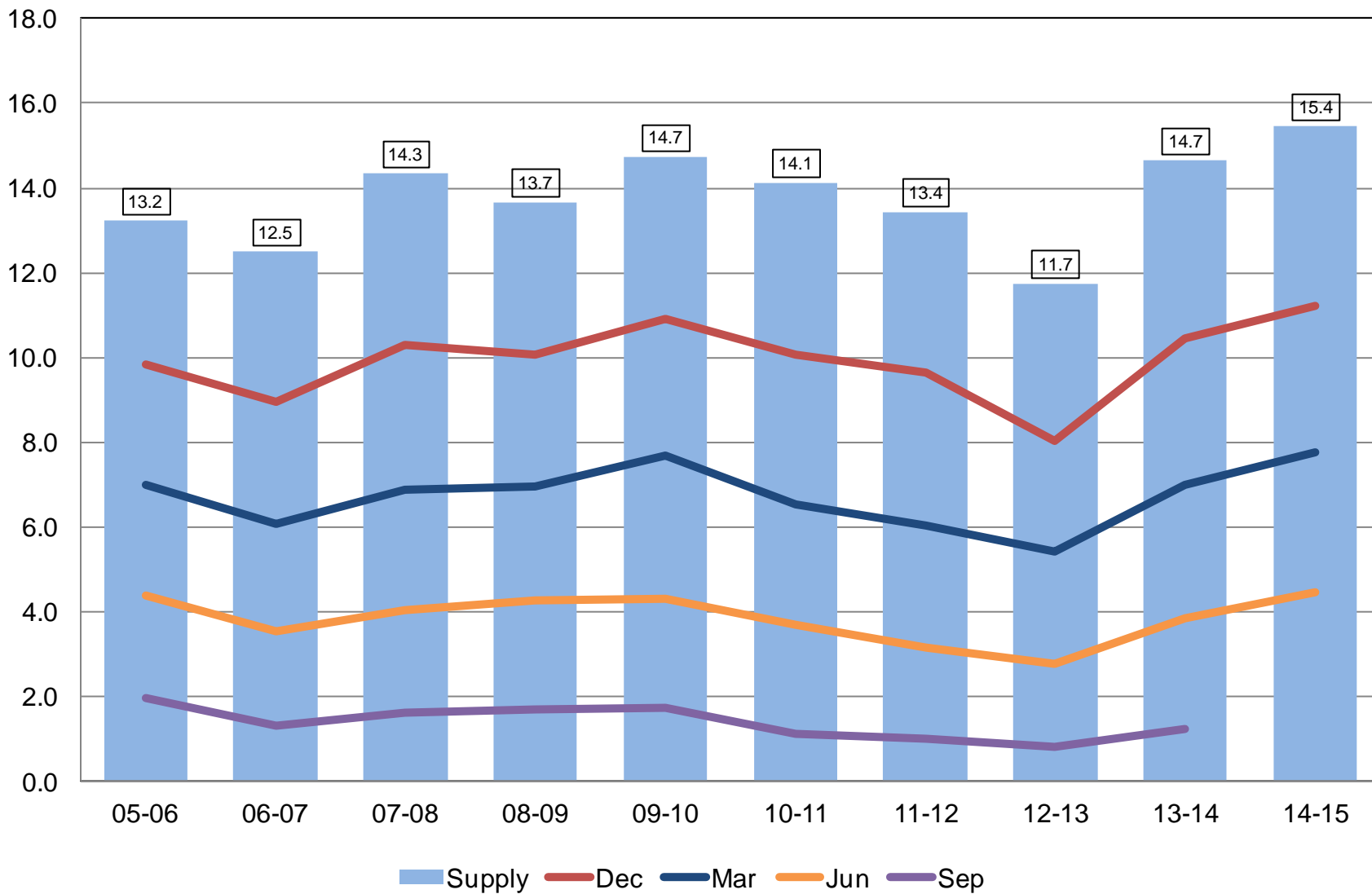


# June Grain Stocks

Crop	Unit	June 2015	% Change From Previous Estimate	% Change From Previous Year
Stocks				
Wheat, All	Mil Bu	753	NA	+27.5
Barley	Mil Bu	78.7	NA	-4.4
Oats	Mil Bu	53.7	NA	+117.1

# Corn Stocks United States

Billion Bushels

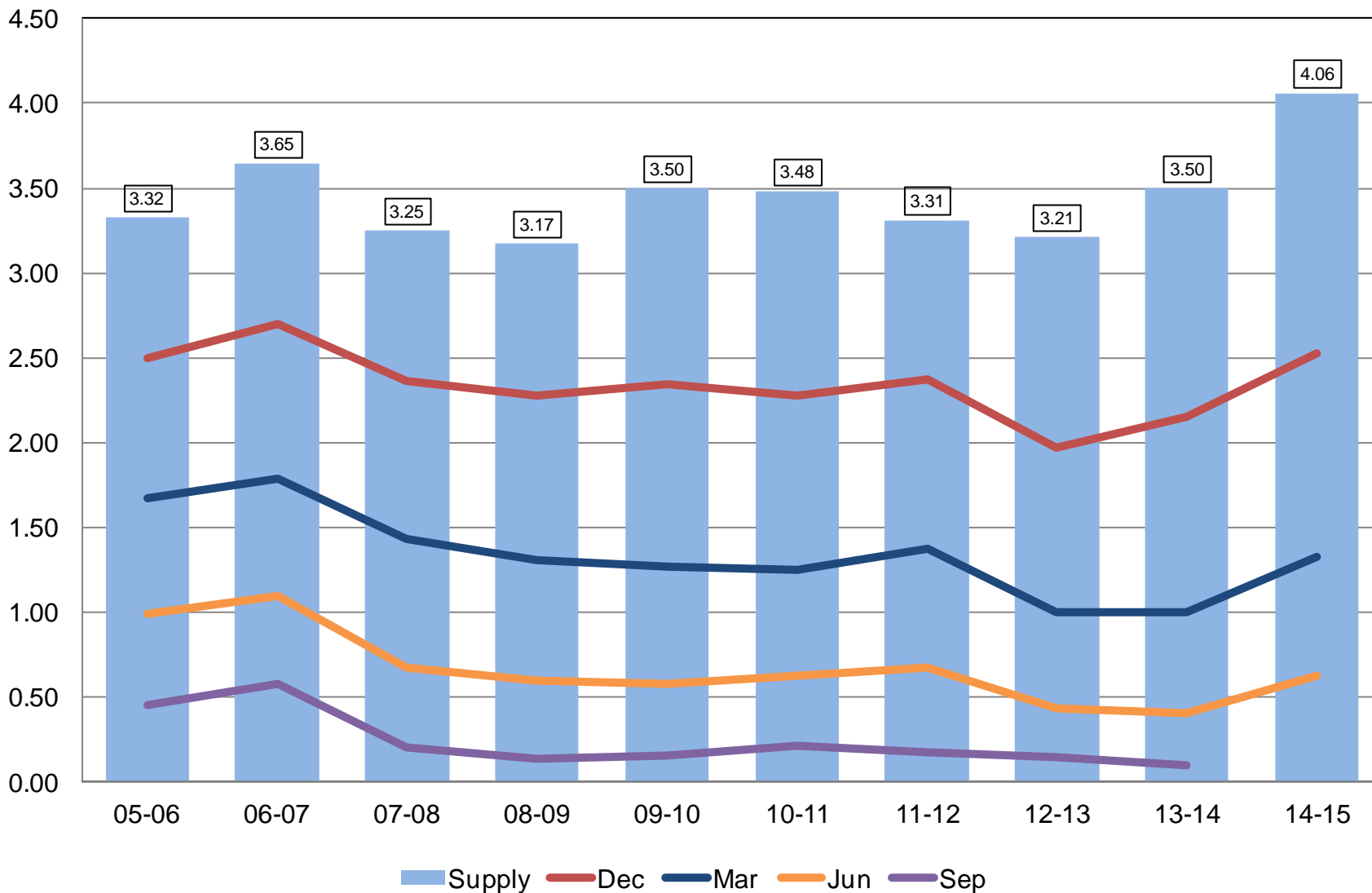






# Soybean Stocks United States

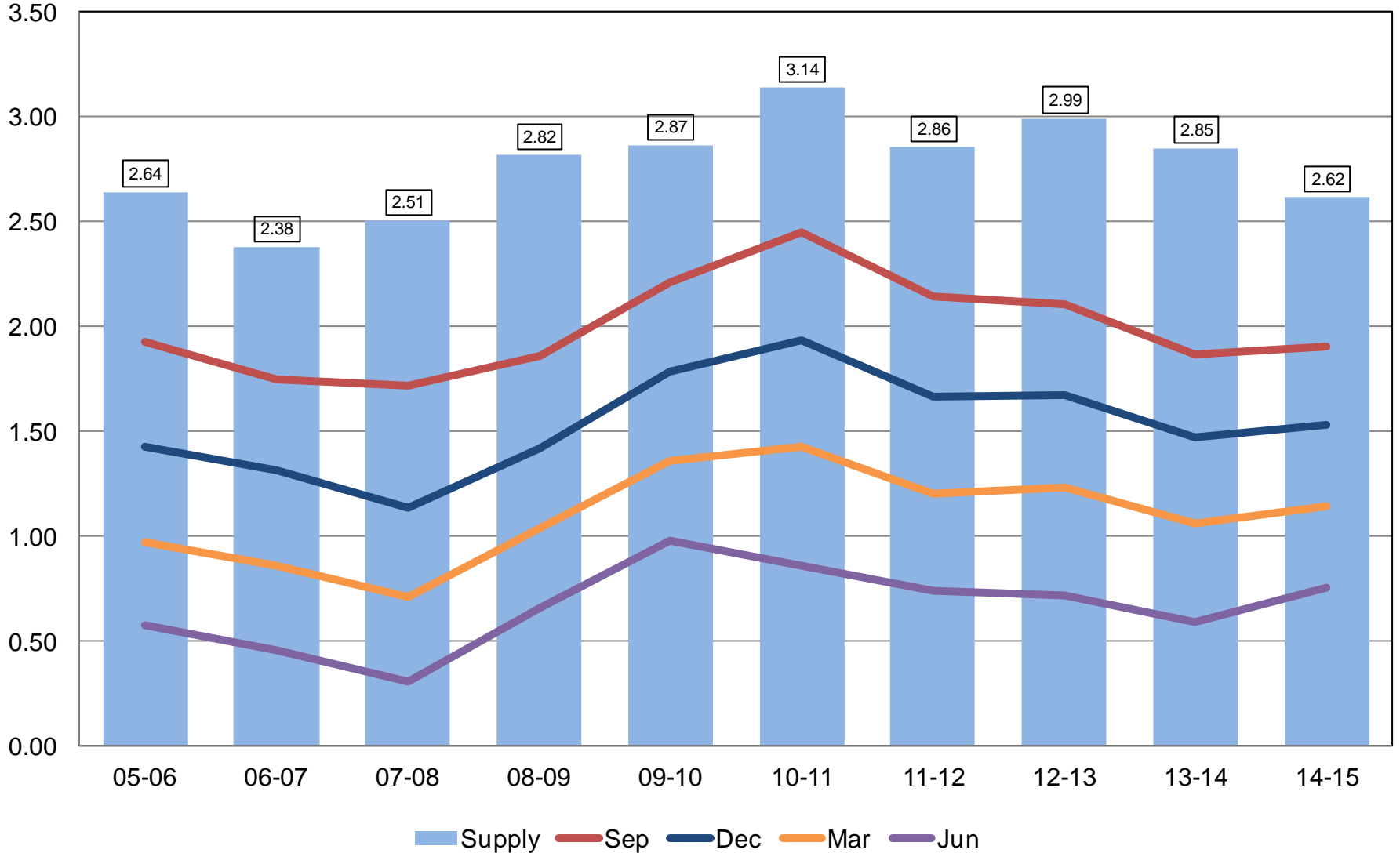
Billion Bushels





# All Wheat Stocks United States

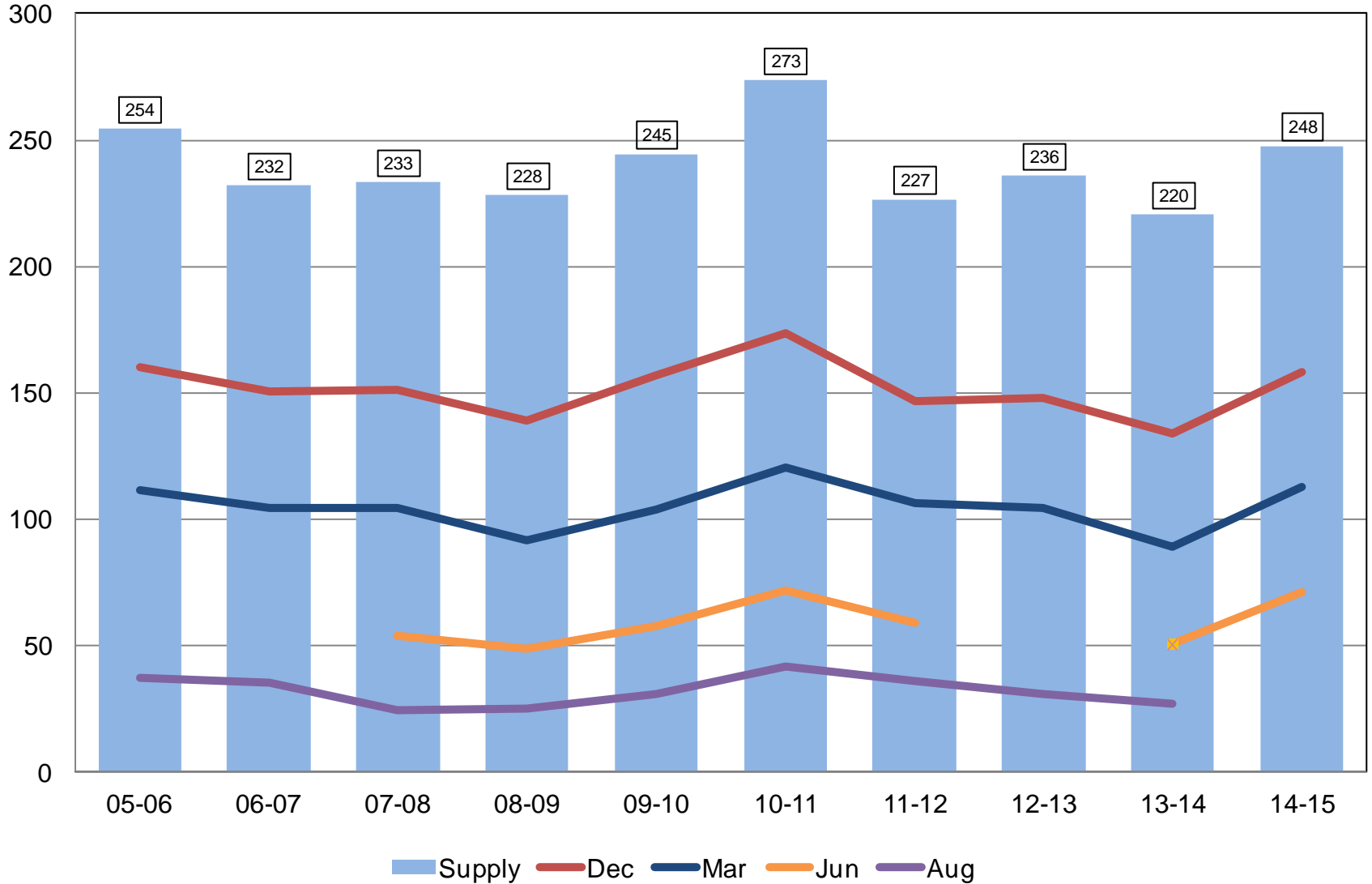
Billion Bushels





# Rough Rice Stocks United States

Million Hundredweight





# Upcoming Reports

Release Date	Report Title
July 1	CAIR: Cotton CAIR: Grain Crushings
July 10	Crop Production
July 24	Cattle Cattle on Feed
July 30	Agricultural Prices
August 3	CAIR: Cotton CAIR: Flour Millings CAIR: Grain Crushings CAIR: Oilseed Crushings CAIR: Fats & Oils
August 12	Crop Production Cotton Ginnings



United States Department of Agriculture  
**National Agricultural Statistics Service**

---

---

**All Reports Available At**  
[www.nass.usda.gov](http://www.nass.usda.gov)

**For Questions**  
202-720-2127  
800-727-9540  
[nass@nass.usda.gov](mailto:nass@nass.usda.gov)