



United States Department of Agriculture  
**National Agricultural Statistics Service**

---



Cattle Inventory  
Sheep & Goat Inventory  
January 1, 2016

Executive Briefing

# Survey Overview

	January Cattle	January Sheep & Goats
Data Collection Period	December 31 – January 15	
Sample Size	37,900	26,500
Collection Methods	Mail, Telephone, Internet, Face-to-Face Interview	
Primary Data Items	Total Inventory, Inventory by Class, Calf Crop	Total Inventory, Inventory by Class, Lamb/Kid Crop



# U.S. Cattle and Calves Revisions



Survey	Item	Initial Estimate (1,000 head)	Current Revision	Net Revision	Current Estimate (1,000 head)
July 1, 2014	All cattle and calves	95,000	-600,000 -0.6%	+700,000 +0.7%	95,700
	All cows	39,000	-	-	39,000
	Calf crop	33,600	-378,000 1.1%	-78,000 -0.2%	33,522
January 1, 2015	All cattle and calves	89,800		-657,000 -0.7%	89,143
	All cows	39,000		-391,000 -1.0%	38,609
	Calf crop	33,900		-378,000 -1.1%	33,522
July 1, 2015	All cattle and calves	98,400		-200,000 -0.2%	98,200
	All cows	39,800		-	39,800
	Calf crop	34,300		+1,700 +0.0%	34,302



# U.S. Cattle Inventory January 1

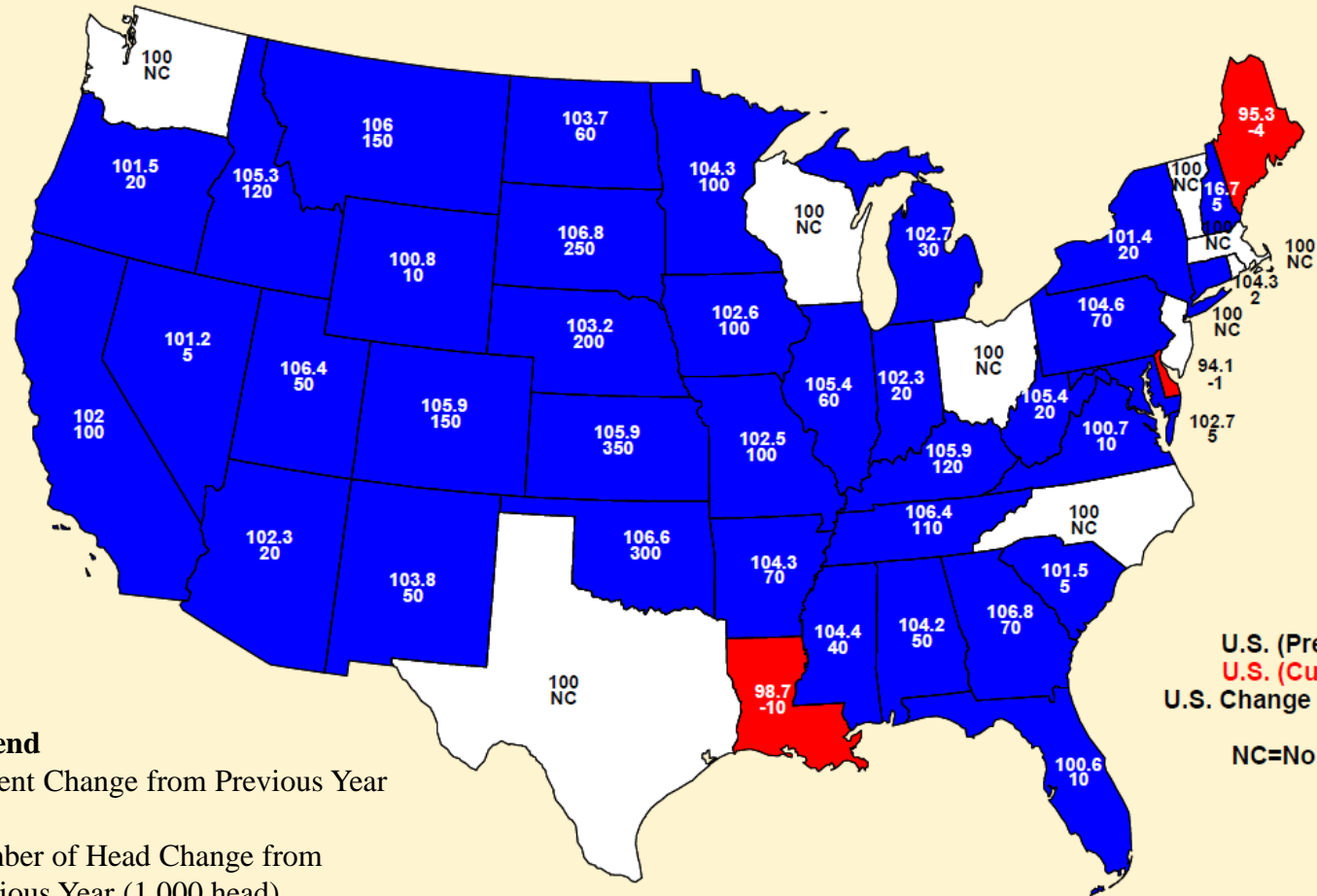


Items	2015 (1,000 head)	2016 (1,000 head)	% PY
All Cattle & Calves	89,143	91,988	103
Cows & Heifers that have Calved	38,609	39,646	103
Beef Cows	29,302	30,331	104
Milk Cows	9,307	9,315	100
All Heifers 500 lbs & over	19,261	19,822	103
For Beef Replacements	6,086	6,285	103
Beef Repl. Expected to Calve	3,712	3,925	106
For Milk Replacements	4,710	4,824	102
Milk Repl. Expected to Calve	3,051	3,117	102
Other Heifers	8,464	8,713	103
Steers 500 lbs & over	15,630	16,320	104
Bulls 500 lb & over	2,109	2,142	102
Calves under 500 lbs	13,534	14,057	104
Cattle on Feed	13,025	13,177	101
Previous Year Calf Crop	33,522	34,302	102

Totals may not add due to rounding

# January 2016 Cattle Inventory - Percent of PY & Change

## All Cattle and Calves



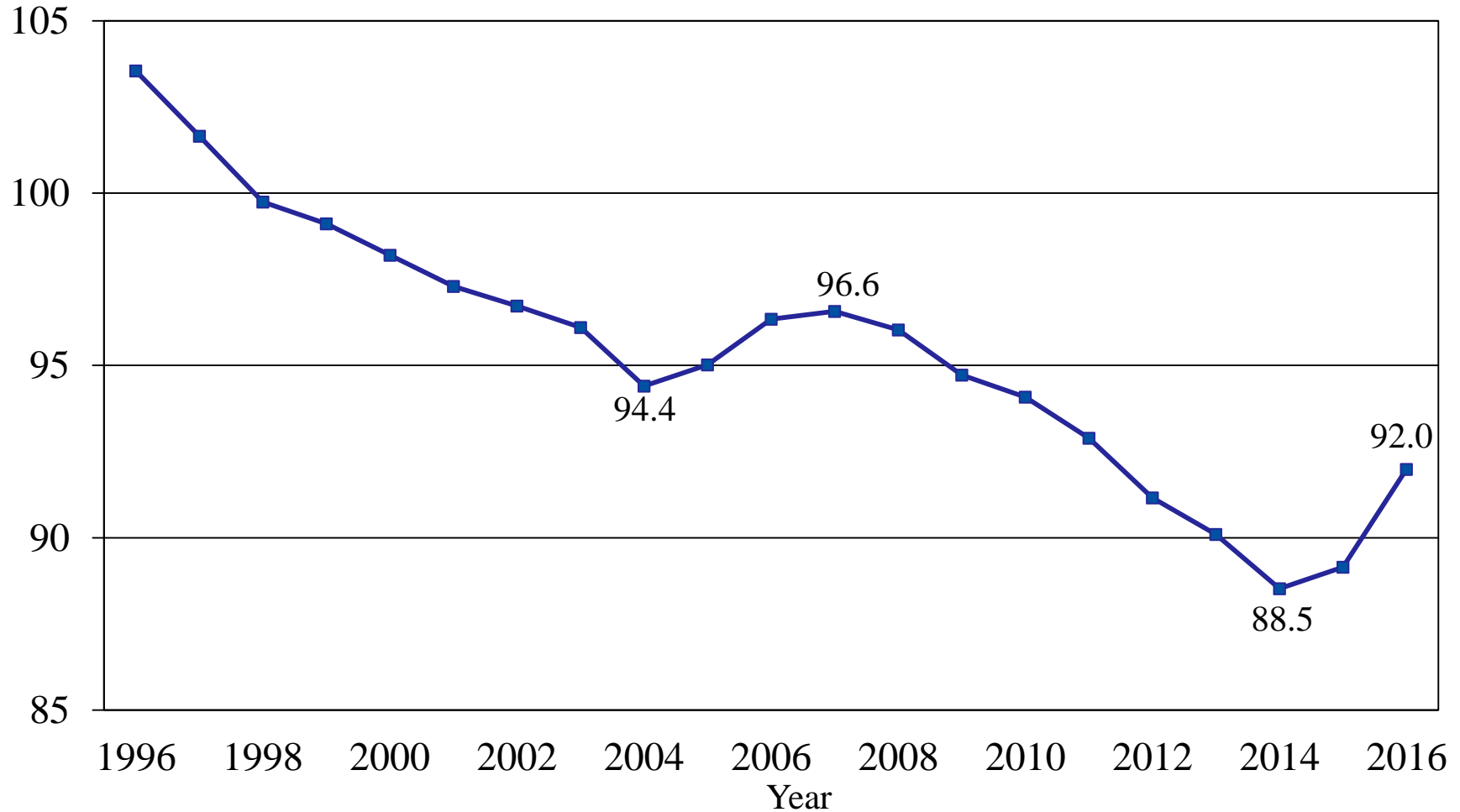
U.S. (Prev) 89143  
**U.S. (Curr) 91988**  
 U.S. Change 103.20  
 NC=No Change

**Legend**  
 Percent Change from Previous Year  
  
 Number of Head Change from  
 Previous Year (1,000 head)

# U.S. All Cattle & Calves

## January 1, 1996 - 2016

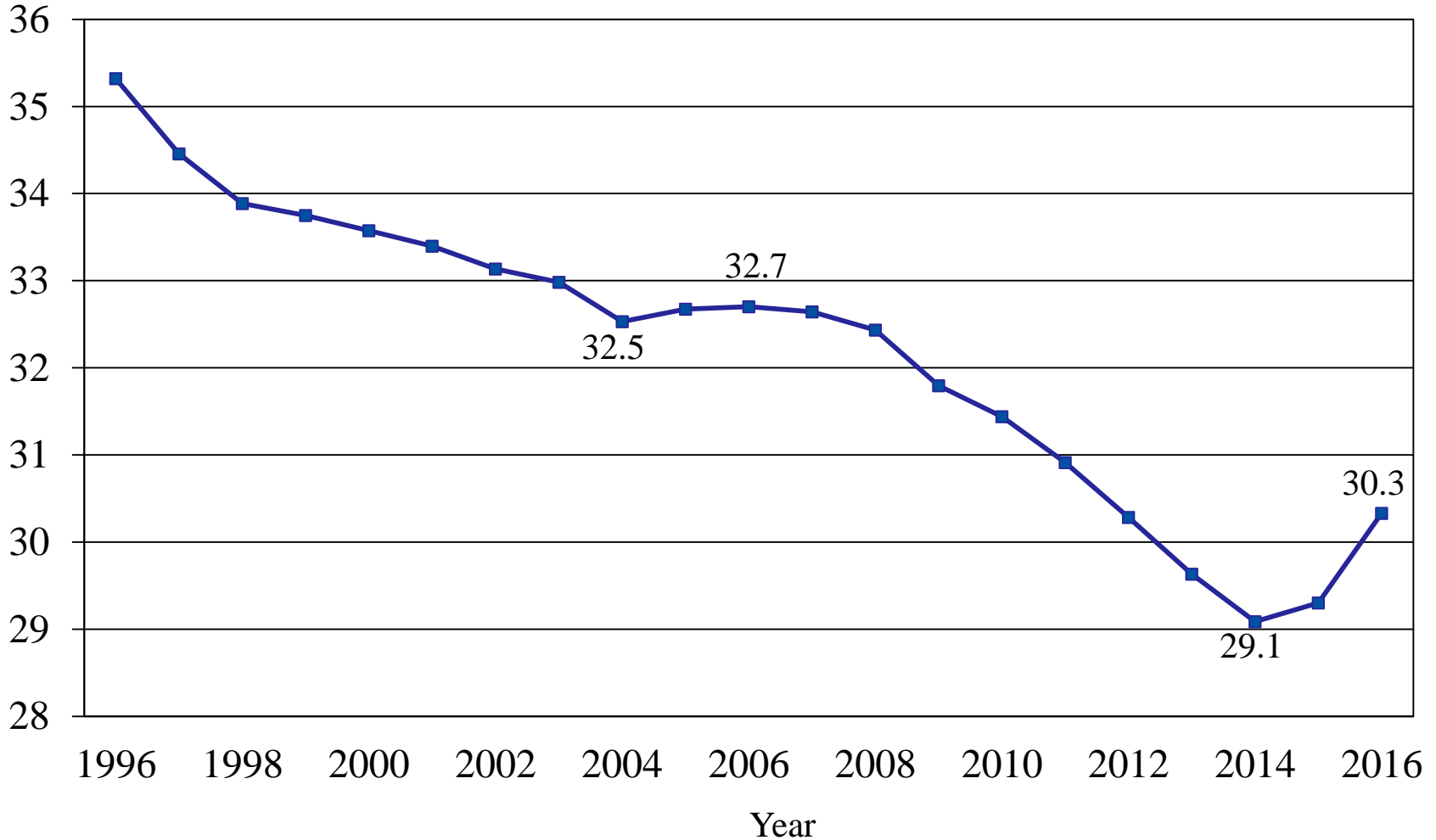
Million head



# U.S. Beef Cows

## January 1, 1996 - 2016

Million head





# NASS Estimates Compared to Trade Expectations Percent of Previous Year



Inventory Items	NASS Estimate	Trade Average	Trade Range
All Cattle & Calves	103.2%	101.8%	101.1 – 102.3%
All Cows	102.7%	102.3%	101.3 – 103.8%
Beef Cows	103.5%	103.0%	101.7 – 105.1%
Milk Cows	100.1%	100.2%	99.9 – 100.5%
Calf Crop	102.3%	102.1%	101.0 – 104.1%
All Cattle on Feed	101.2%	98.8%	98.6 – 99.0%

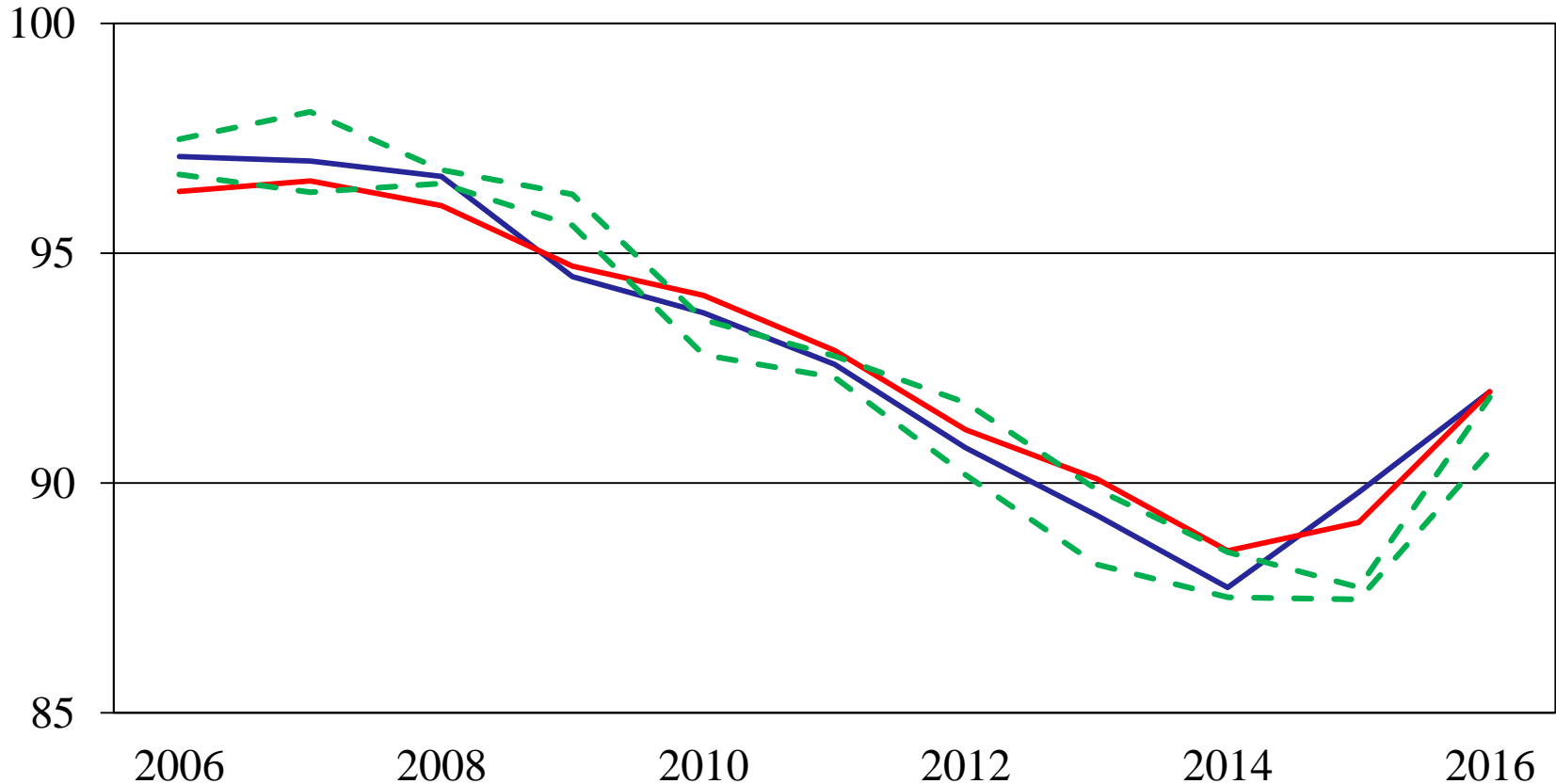


# All Cattle Inventory

## First Estimate Versus Final Estimate

January 1, 2006 - 2016

Million head

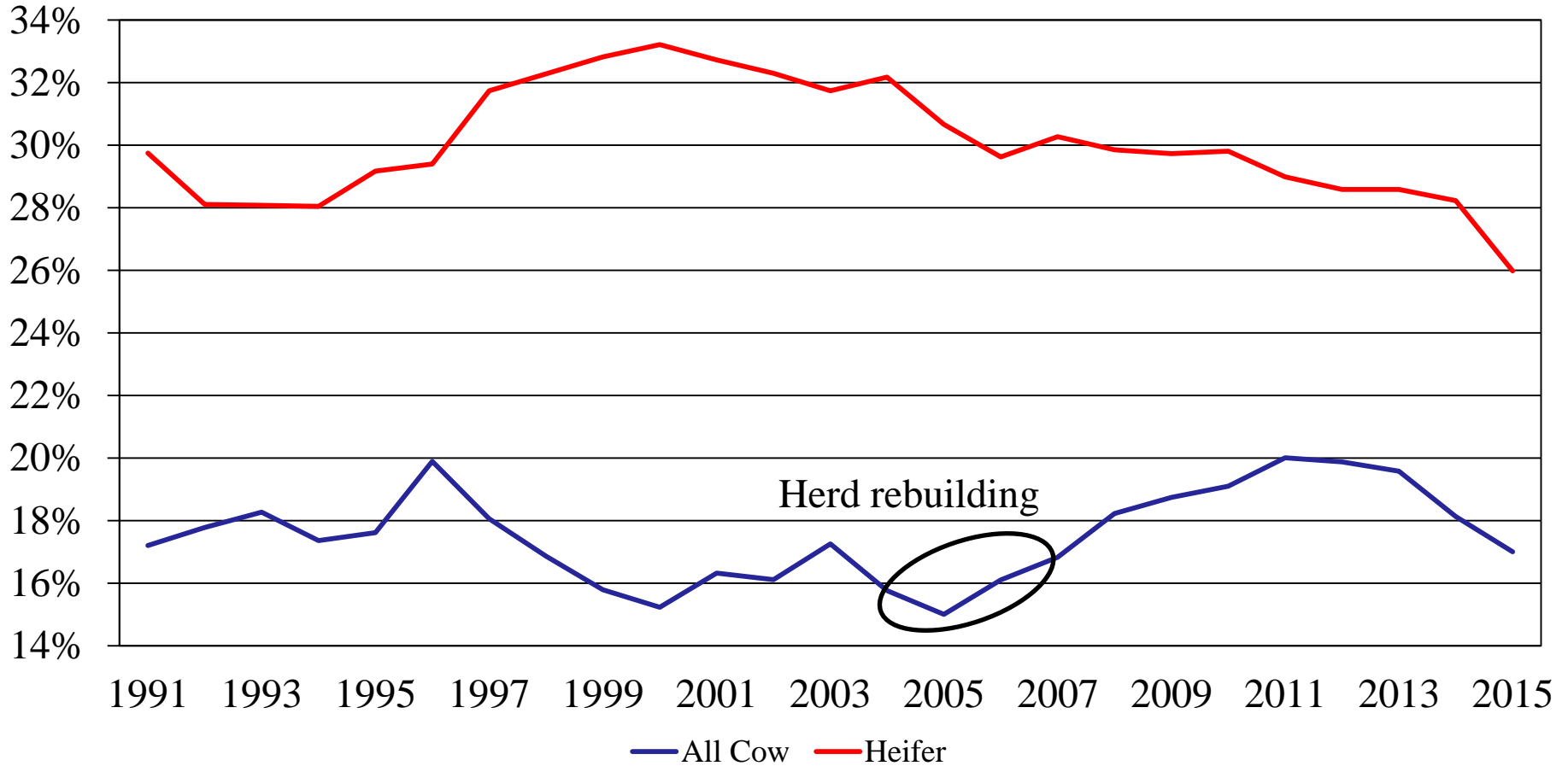


ASB First Estimate ASB Final Estimate Trade Lower Range Trade Upper Range

Year

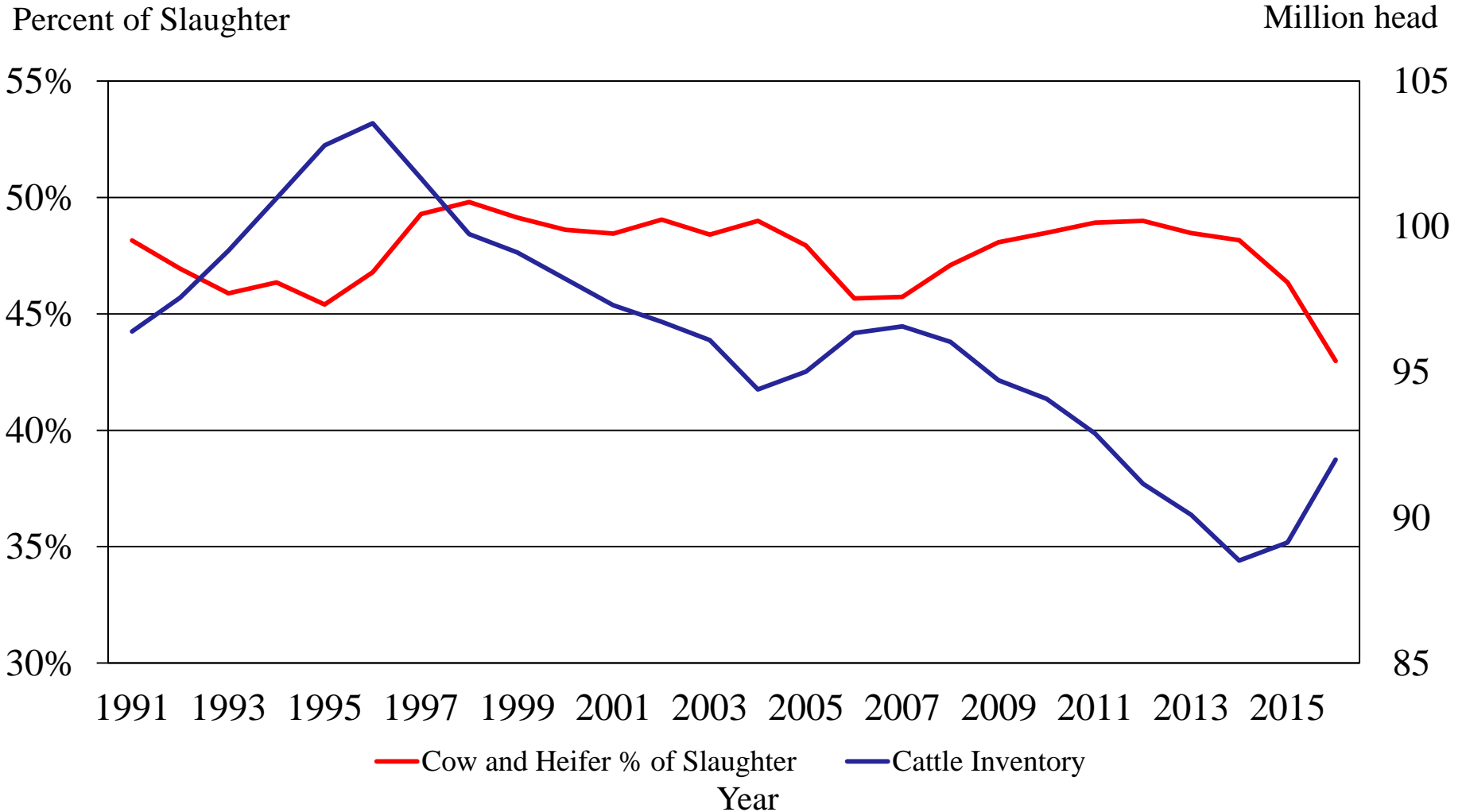
# All Cow & Heifer Slaughter as a Percent of Total Slaughter

Percent of Slaughter



Year

# Cattle Inventory VS Cow and Heifer Slaughter as a Percent of Slaughter





# U.S. Feeder Cattle Supply on January 1



Item	2015 (1,000 head)	2016 (1,000 head)	% PY
Calves < 500 lbs	13,534	14,057	104
Steers & Other Heifers > 500 lbs	24,094	25,034	104
Total Supply	37,628	39,090	104
Cattle on Feed	13,025	13,177	101
Feeder Cattle Supply	24,603	25,913	105
Number Grazing on Small Grain Pasture, 3 States	1,930	1,900	98
Kansas, Oklahoma, Texas			

Totals may not add due to rounding

January 29, 2016

# U.S. Sheep Revisions

Survey	Item	Initial Estimate (1,000 head)	Current Revision	Current Estimate (1,000 head)
January 1, 2015	All sheep and lambs	5,280	-	5,280
	Lamb crop	3,440	-	3,440



# U.S. Sheep and Lamb Inventory

## January 1



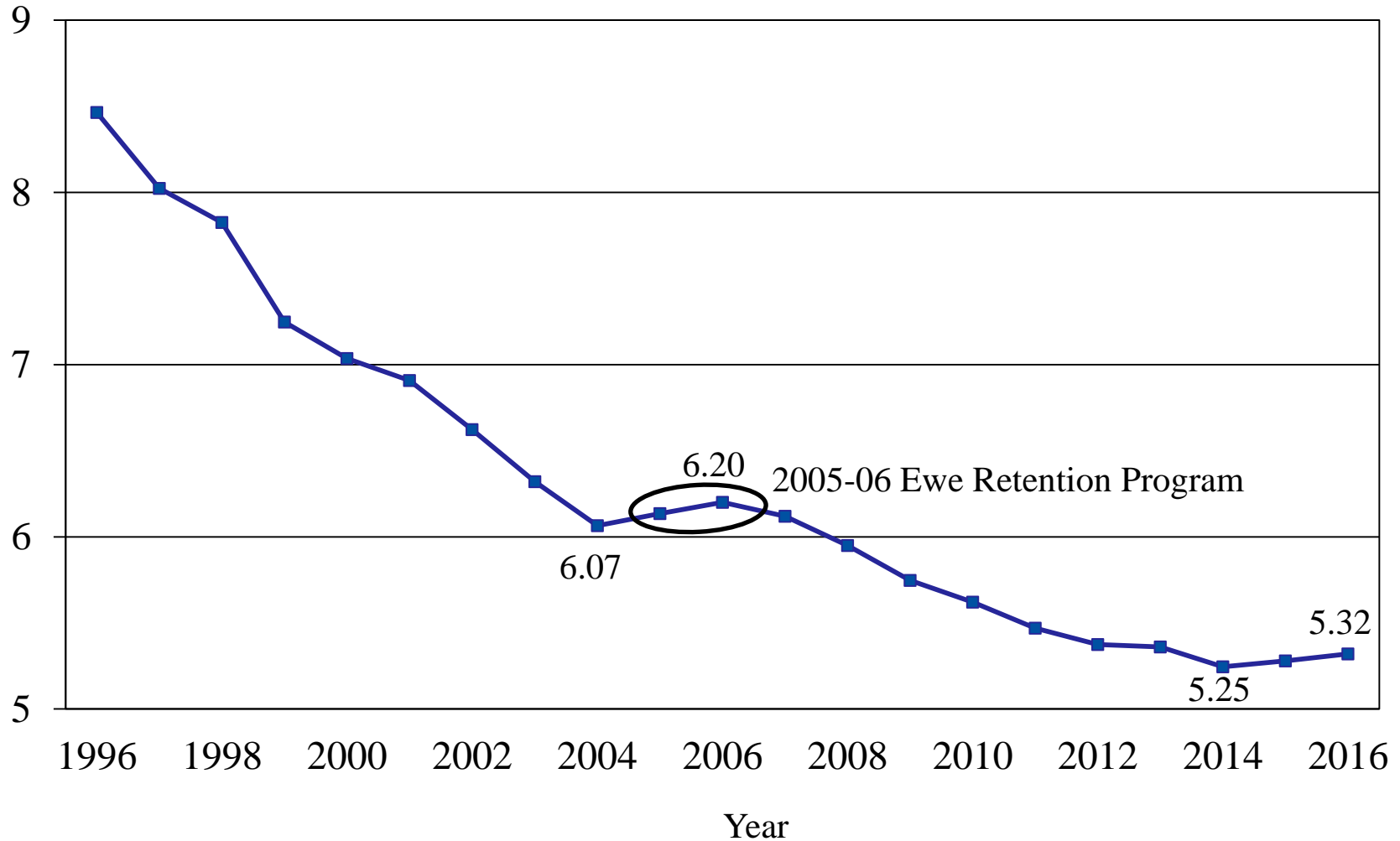
Items	2015 (1,000 head)	2016 (1,000 head)	% PY
All Sheep & Lambs	5,280	5,320	101
Market	1,345	1,355	101
Breeding	3,935	3,965	101
Replacement Lambs Under One Year Old	650	665	102
Ewes One Year Old and Older	3,110	3,125	100
Rams One Year Old and Older	175	175	100
Previous Year Lamb Crop	3,440	3,440	100

Totals may not add due to rounding

# U.S. Sheep and Lambs

## January 1, 1996 - 2016

Million head



# U.S. Goats Revisions

Survey	Item	Initial Estimate (1,000 head)	Current Revision	Current Estimate (1,000 head)
January 1, 2015	All goats and kids	2,675	-25,000 -0.9%	2,650
	Kid crop	1,714	-	1,714





# U.S. Goat and Kid Inventory

## January 1



Items	2015 (1,000 head)	2016 (1,000 head)	% PY
All Goats & Kids	2,650	2,620	99
Market	462	459	99
Breeding	2,188	2,161	99
Replacement Kids Under One Year Old	390	391	100
Does One Year Old and Older	1,635	1,608	98
Bucks One Year Old and Older	164	163	99
Previous Year Kid Crop	1,714	1,677	98

Totals may not add due to rounding



# U.S. Goat Inventory by Type

## January 1



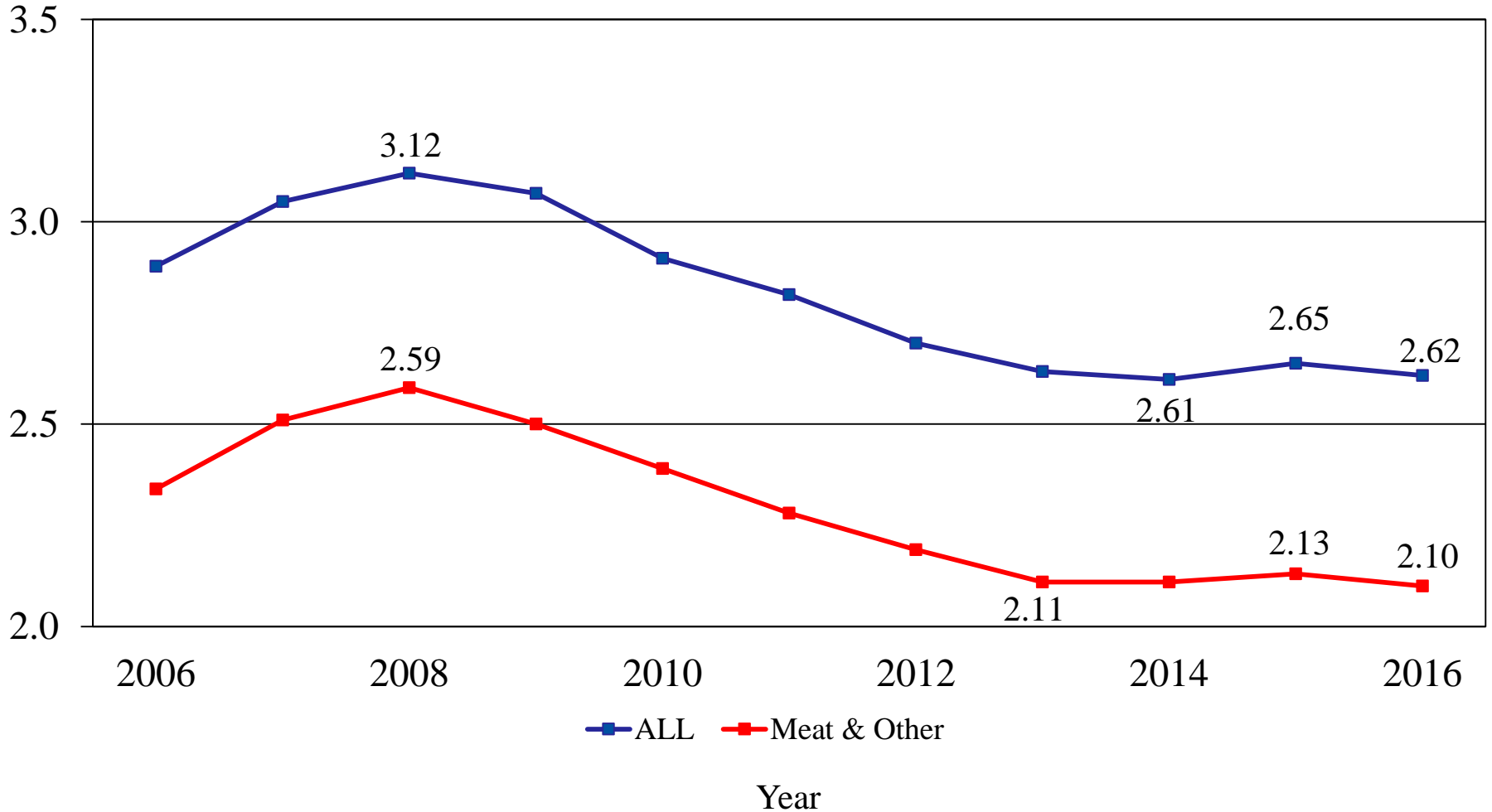
Items	2015 (1,000 head)	2016 (1,000 head)	% PY
Total Goats	2,650	2,620	99
Meat & Other	2,125	2,095	99
Milk	365	375	103
Angora	160	150	94

Totals may not add due to rounding

# U.S. All Goats Inventory versus Meat and Other Goats Inventory

Million head

January 1, 2006 - 2016





# Upcoming NASS Reports



Release Date	Report Title
February 1	Cotton System Fats & Oils Flour Milling Grain Crashings
February 5	Catfish Production
February 9	Crop Production
February 18	Farm & Land in Farms
February 19	Cattle on Feed Milk Production
February 23	Cold Storage Cold Storage - Annual
February 26	Trout Production
February 29	Agricultural Prices



United States Department of Agriculture  
**National Agricultural Statistics Service**

---



All Reports Available At  
[www.nass.usda.gov](http://www.nass.usda.gov)

For Questions  
(202) 720-3570  
(800) 727-9540  
[nass@nass.usda.gov](mailto:nass@nass.usda.gov)