



United States Department of Agriculture  
**National Agricultural Statistics Service**

---

---

**June Crop Production**  
Executive Summary

Lance Honig, Chief  
Crops Branch



# Contents

Field Crops	Fruit & Nuts	Specialty Crops
Winter Wheat	Citrus	Maple Syrup
Sugarcane*	Prunes	
Sugarbeets*		
Sweet Potatoes*		

\* 2015 Crop Year Revisions



# Survey Overview

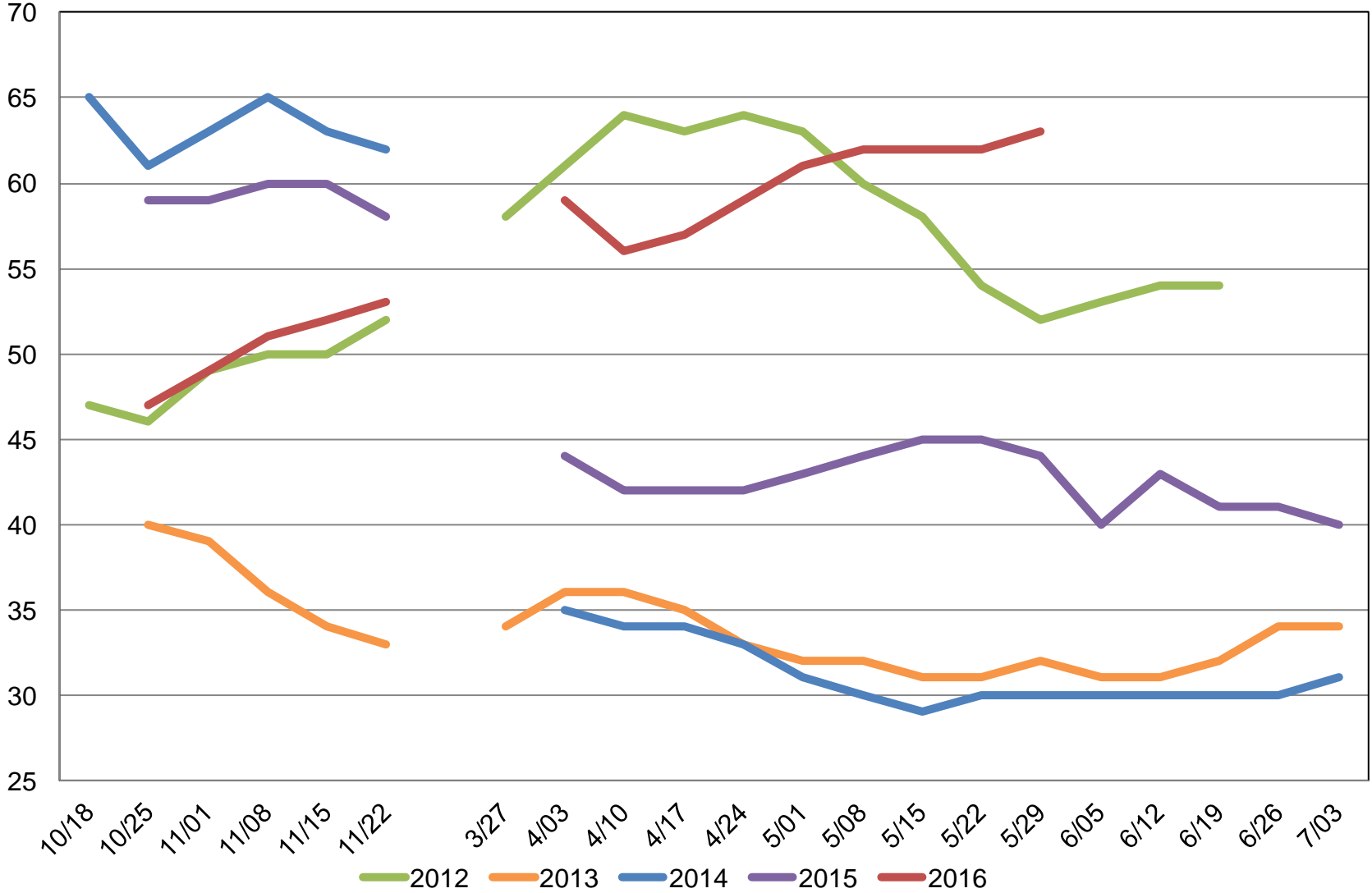
	<b>Ag Yield</b>	<b>Objective Yield</b>
Survey Type	Farmer Reported	Field Measurement
Crops Included	Winter and Durum Wheat	Winter Wheat
States	30	10
Sample Size	4,489	1,090
Collection Period	May 28-June 7	May 25-June 1



# U.S. Winter Wheat Condition

## Percent Rated Good to Excellent

Percent

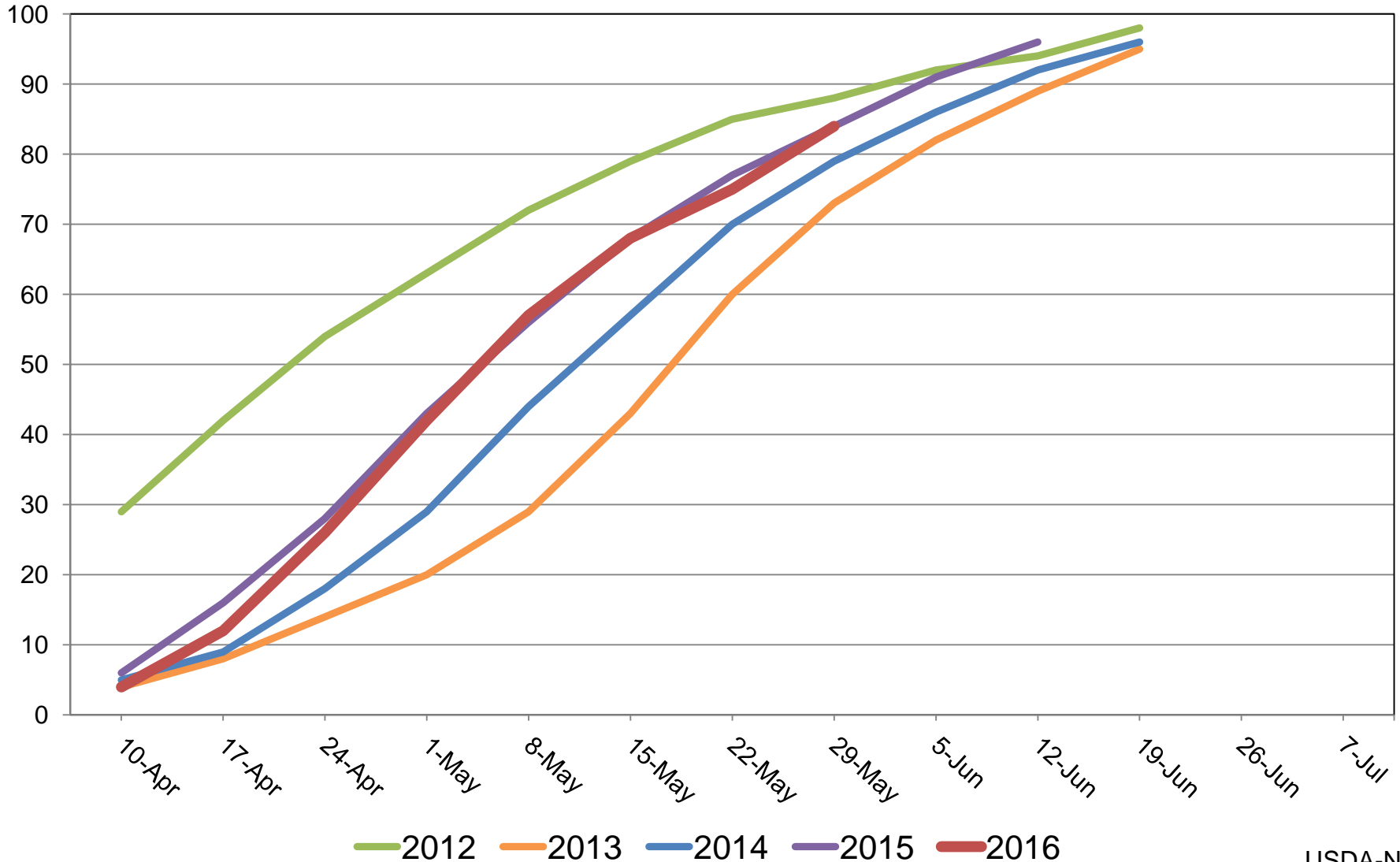




# U.S. Winter Wheat Progress

Percent

Percent Headed





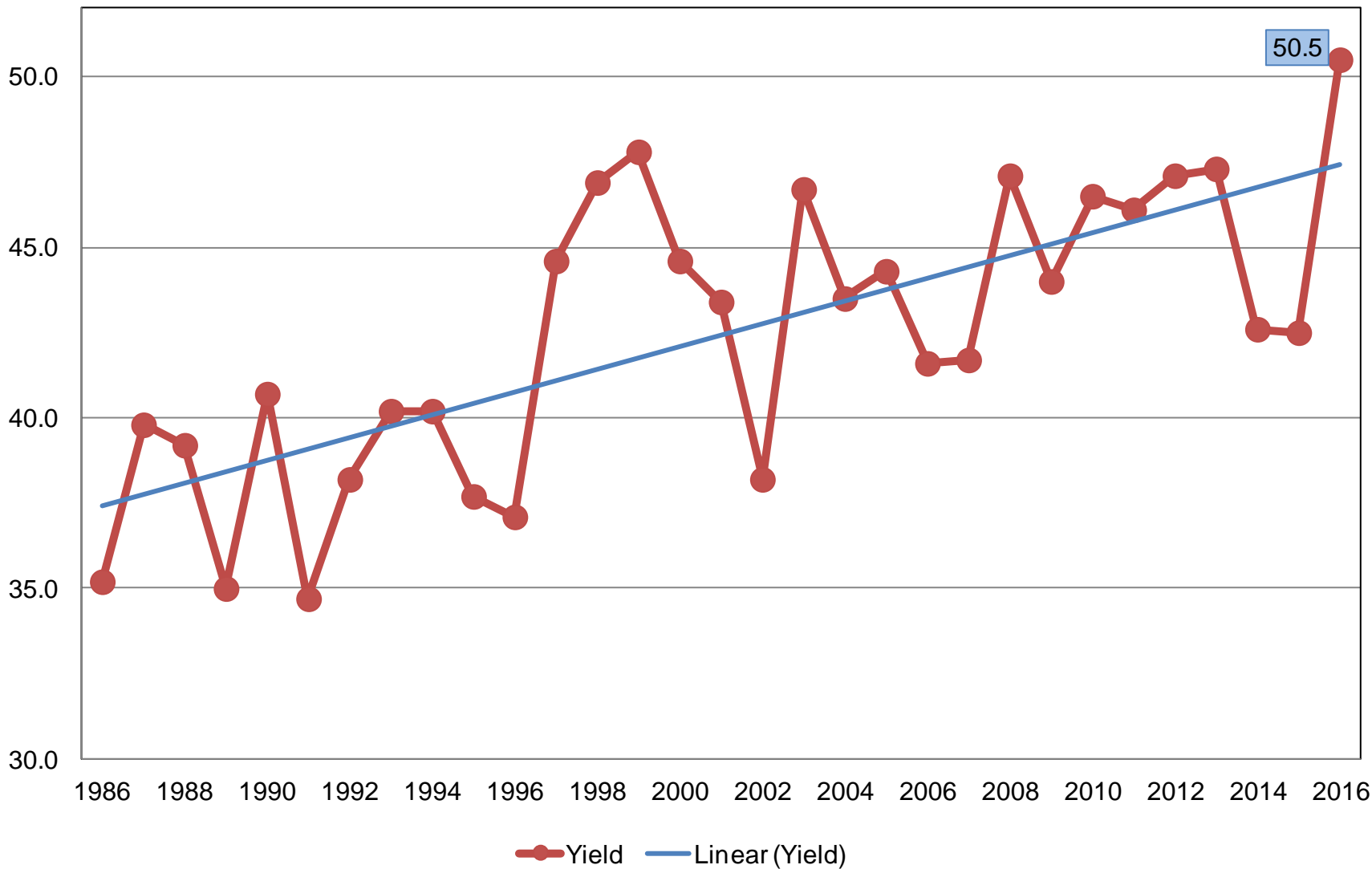
# June 2016 Crop Production

Crop	Unit	June 2016	% Change From Previous Forecast	% Change From Previous Season
Wheat, Winter				
Harvested	Mil Ac	29.8	NC	-7.5
Yield	Bu/Ac	50.5	+5.6	+18.8
Production	Bil Bu	1.51	+5.6	+10.0
Production by Class				
Hard Red	Mil Bu	938	+8.7	+13.4
Soft Red	Mil Bu	355	-0.6	-1.2
White	Mil Bu	214	+3.1	+16.4



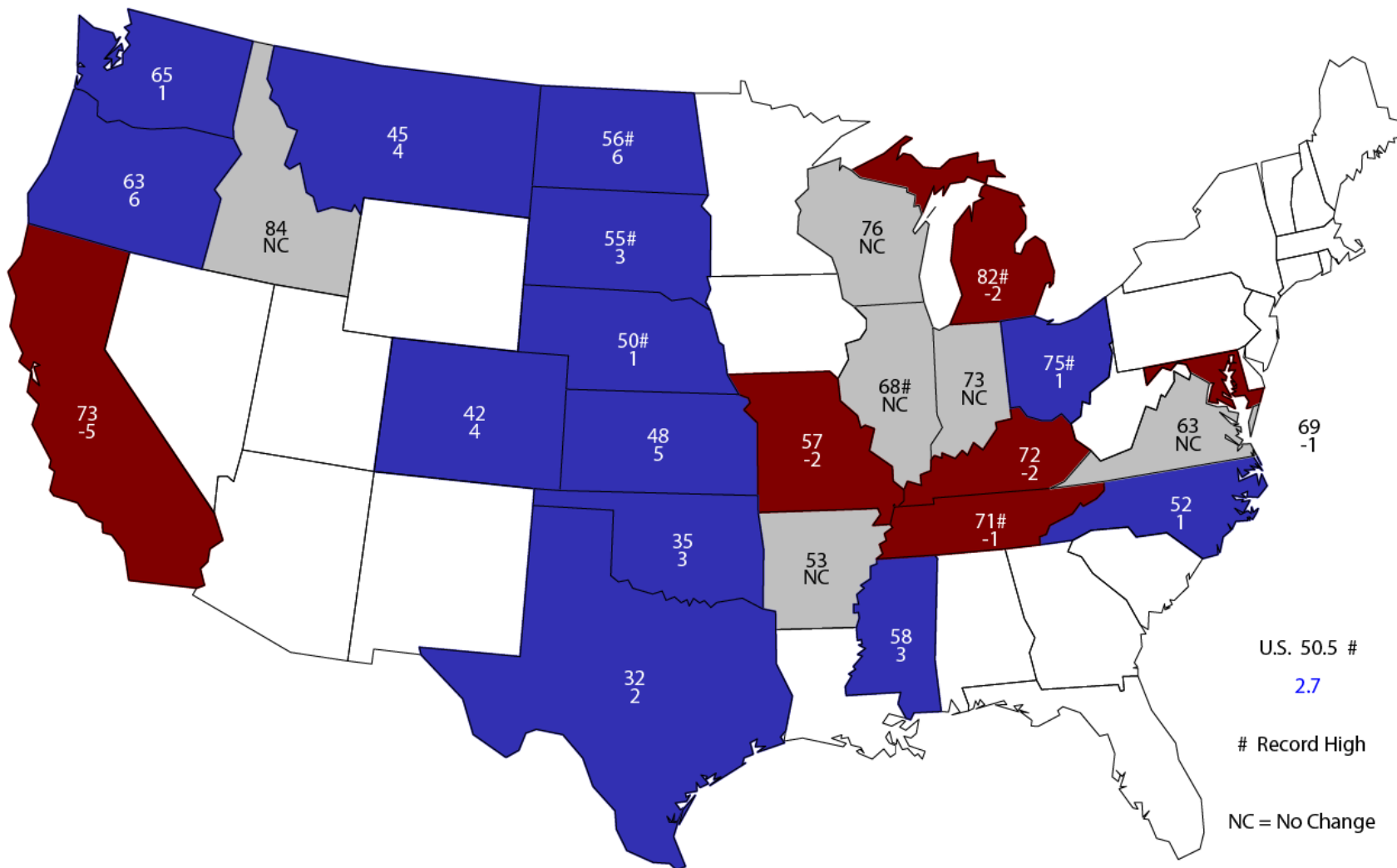
# Winter Wheat Yield United States

Bushels per Acre



# June 1, 2016 Winter Wheat Yield

## Bushels and Change From Previous Month



U.S. 50.5 #  
2.7

# Record High

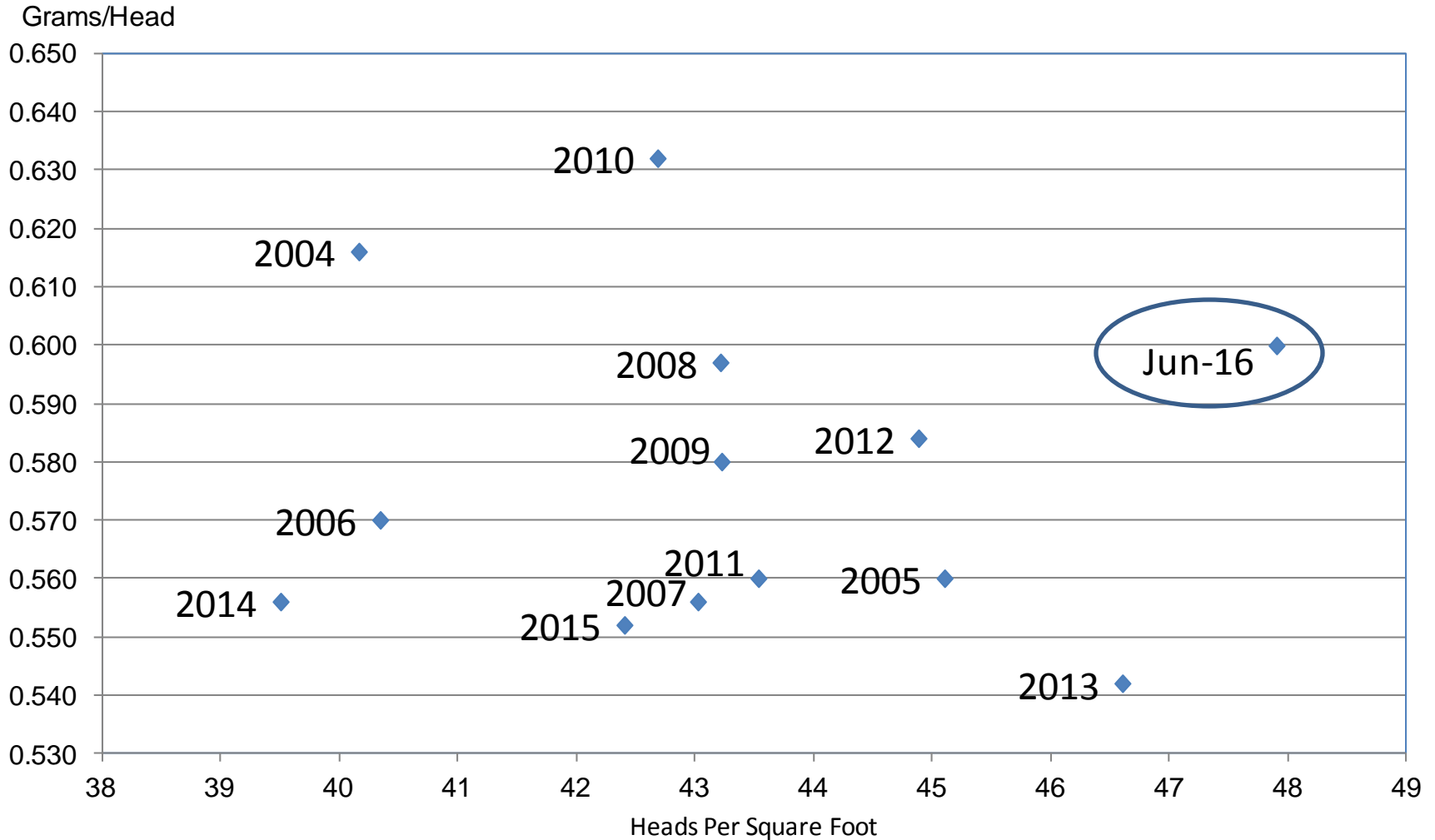
NC = No Change





# Wheat Objective Yield Region

## Heads Per Square Foot vs. Implied Head Weight



Implied Head Weight=  $\text{Published Yield} / (\text{Heads} * 1.6006)$



# June 2016 Crop Production

Crop	Unit	June 2016	% Change From Previous Forecast	% Change From Previous Season
Production				
Oranges	Mil Tons	5.83	+0.2	-8.5
Grapefruit	Thou Tons	825	NC	-7.3
Tangelos	Thou Tons	17.6	NC	-41.3
Tangerines & Mandarins	Thou Tons	948	+0.1	+10.9



# June 2016 Crop Production

Crop	Unit	June 2016	% Change From Previous Forecast	% Change From Previous Season
Production				
Maple Syrup	Mil Gal	4.21	NA	+22.5
Prunes, dried (CA)	Thou Tons	45.0	NA	-55.0
Acreage				
Hops	Thou Ac	51.1	NA	+17.1



# June 2016 Crop Production

Crop	Unit	2015	% Change From Previous Estimate	% Change From Previous Season
Sugarcane				
Harvested	Thou Ac	887	-0.5	+2.2
Yield	Tons/Ac	36.4	-2.4	+4.0
Production	Mil Tons	32.3	-2.9	+6.1



# June 2016 Crop Production

Crop	Unit	2015	% Change From Previous Forecast	% Change From Previous Season
Sugarbeets				
Planted	Mil Ac	1.16	+0.1	-0.2
Harvested	Mil Ac	1.15	+0.1	-0.1
Yield	Tons/Ac	30.9	+0.3	+13.2
Production	Mil Tons	35.4	+0.2	+13.0



# June 2016 Crop Production

Crop	Unit	2015	% Change From Previous Estimate	% Change From Previous Season
Sweet Potatoes				
Harvested	Thou Ac	153	NC	+13.2
Yield	Cwt/Ac	203	NC	-7.3
Production	Mil Cwt	31.0	NC	+4.8



# Upcoming Reports

Release Date	Report Title
June 17	Potato Stocks
June 22	Cherry Production
June 24	Cattle on Feed Quarterly Hogs and Pigs
June 29	Agricultural Prices
June 30	Acreage Grain Stocks Rice Stocks
July 1	CAIR: Cotton System CAIR: Fats & Oils CAIR: Grain Crushings
July 6	Noncitrus Fruits and Nuts - Annual
July 12	Crop Production



United States Department of Agriculture  
**National Agricultural Statistics Service**

---

---

**All Reports Available At**  
[www.nass.usda.gov](http://www.nass.usda.gov)

**For Questions**  
202-720-2127  
800-727-9540  
[nass@nass.usda.gov](mailto:nass@nass.usda.gov)