



United States Department of Agriculture
National Agricultural Statistics Service

July Crop Production
Executive Summary

Lance Honig, Chief
Crops Branch



Contents

Field Crops	Fruit and Nuts	Specialty Crops
Winter Wheat	Citrus	Tobacco
Other Spring Wheat	Apricots	
Durum Wheat	Almonds	
Barley		
Oats		



Survey Overview

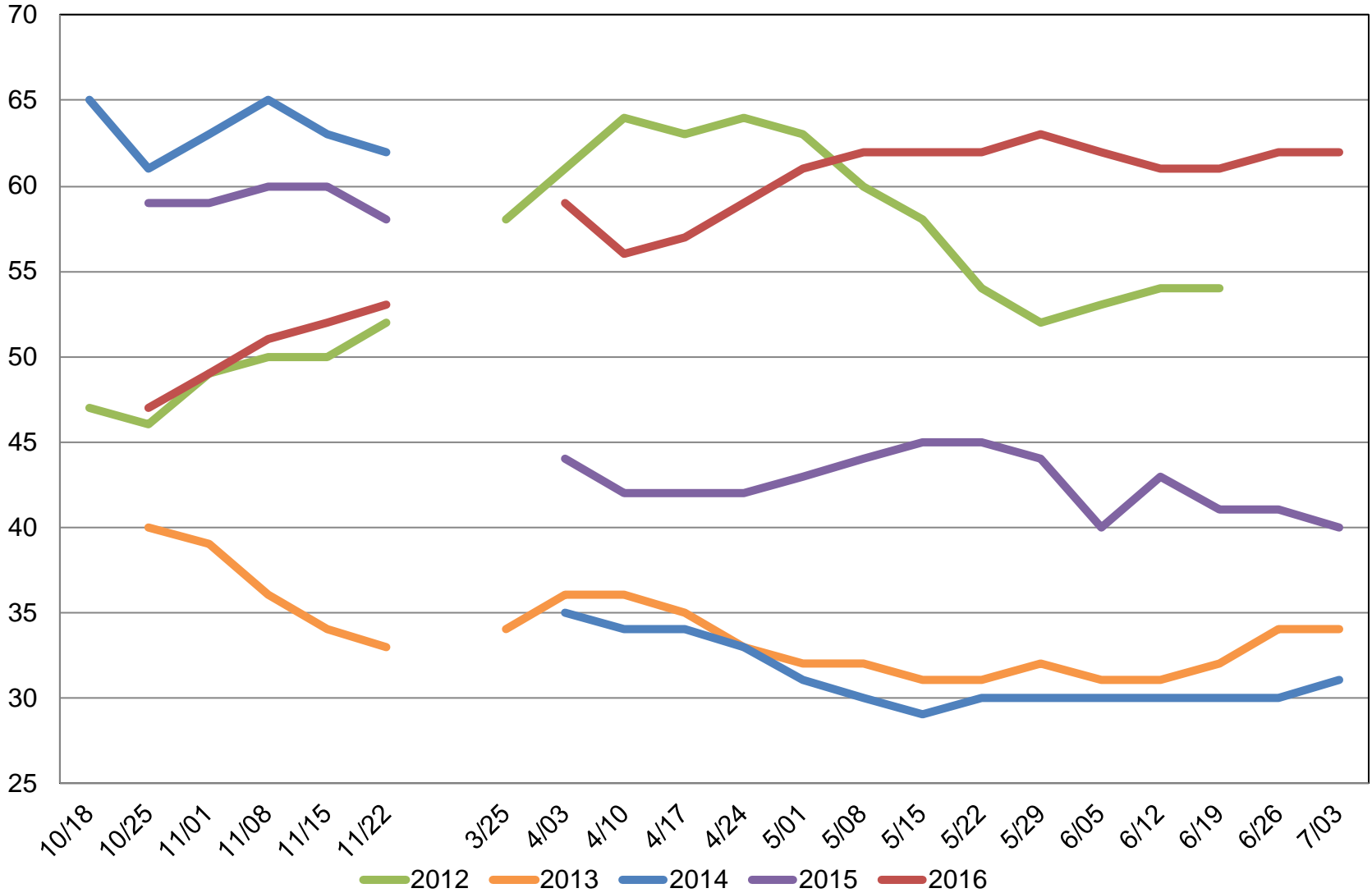
	Ag Yield	Objective Yield
Survey Type	Farmer Reported	Field Measurement
Crops Included	Winter, Spring & Durum Wheat, Oats, Barley, Tobacco	Winter Wheat
States	36	10
Sample Size	7,403	1,470
Collection Period	June 29 – July 7	June 25 – July 1



U.S. Winter Wheat Condition

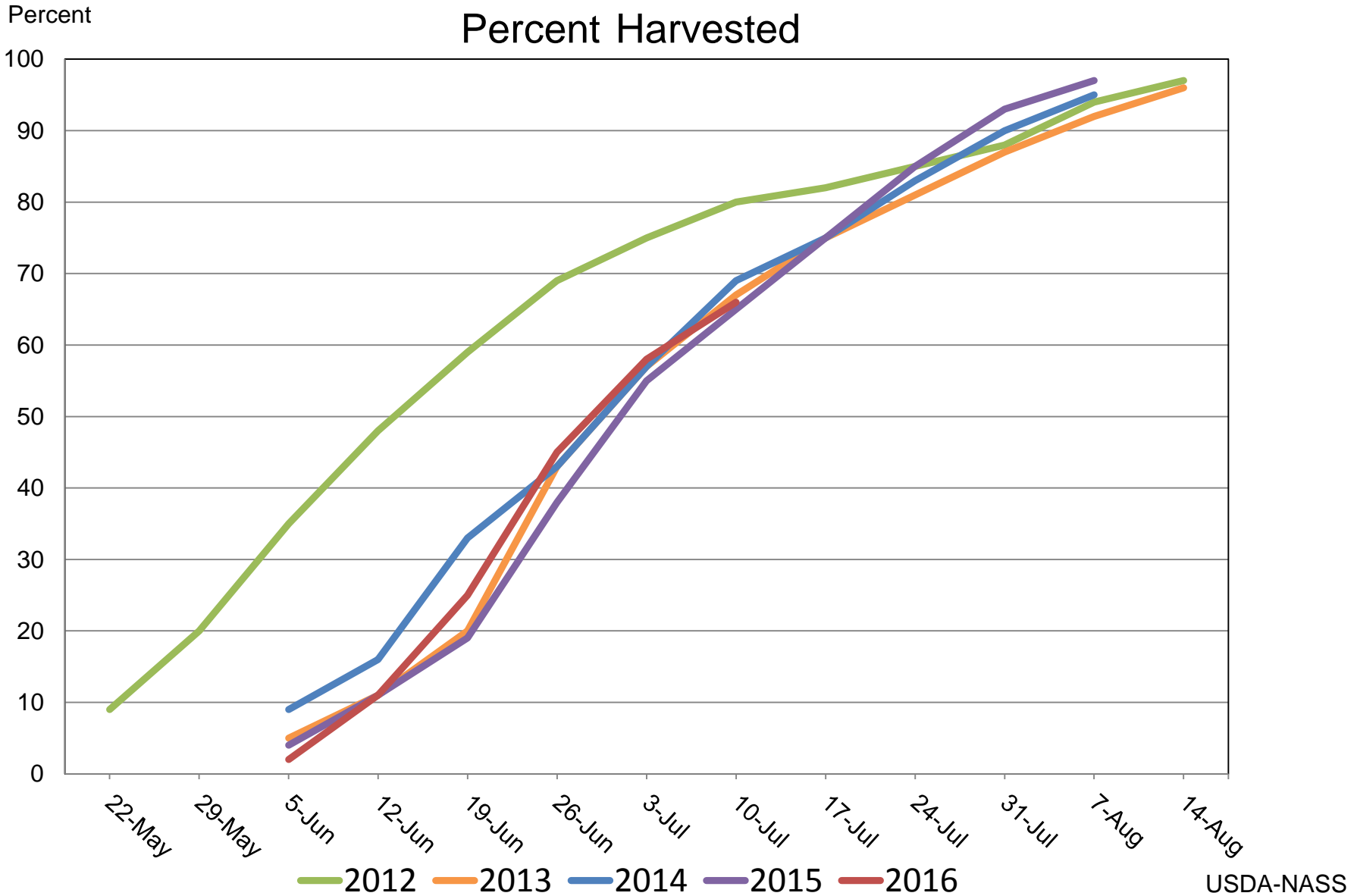
Percent Rated Good to Excellent

Percent





U.S. Winter Wheat Progress



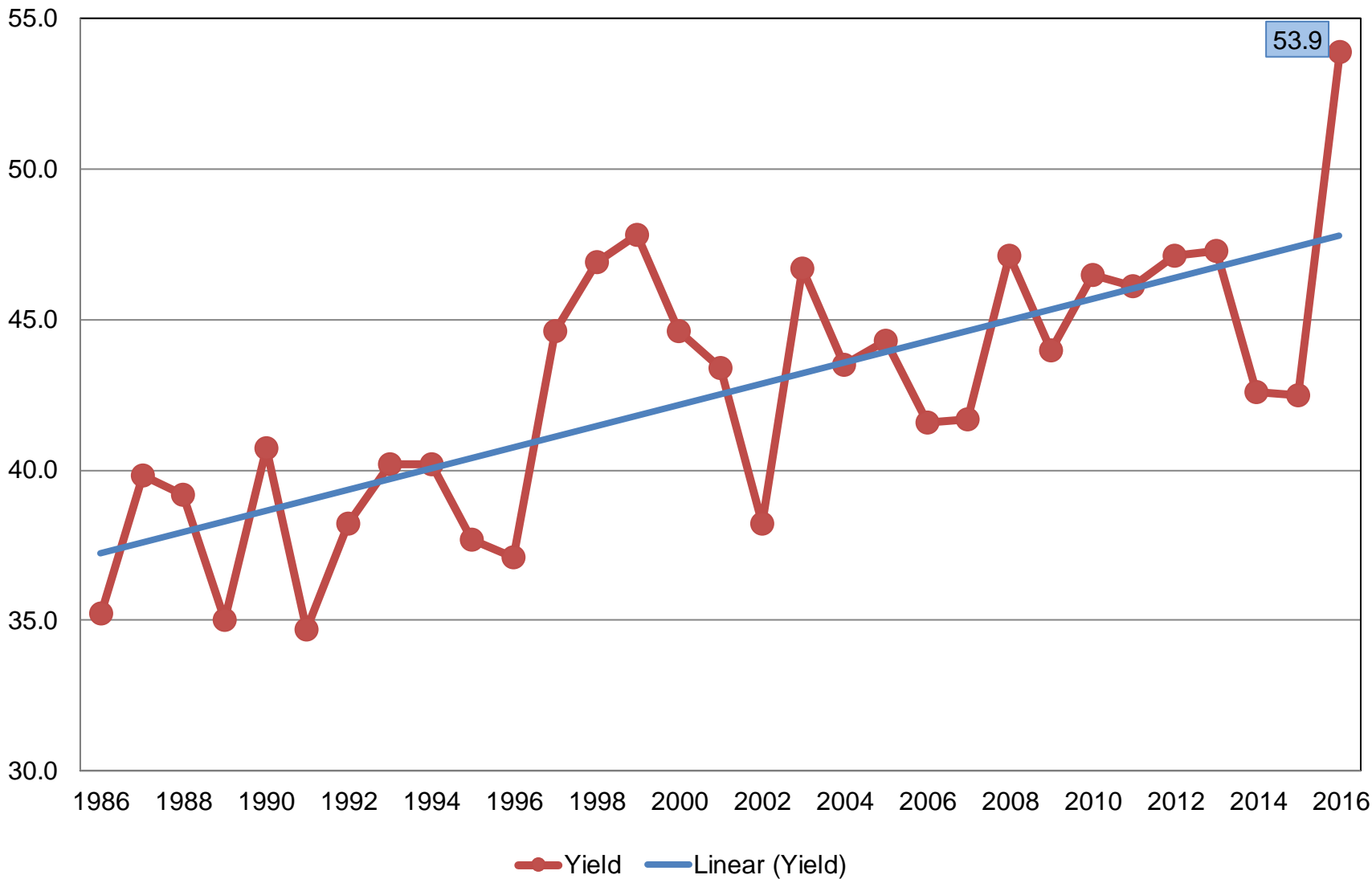


July 2016 Crop Production

Crop	Unit	July 2016	% Change From Previous Forecast	% Change From Previous Season
Wheat, Winter				
Harvested	Mil Ac	30.2	+1.2	-6.5
Yield	Bu/Ac	53.9	+6.7	+26.8
Production	Bil Bu	1.63	+8.0	+18.8
Production by Class				
Hard Red	Mil Bu	1,034	+10.3	+25.1
Soft Red	Mil Bu	370	+4.4	+3.1
White	Mil Bu	224	+4.3	+21.3

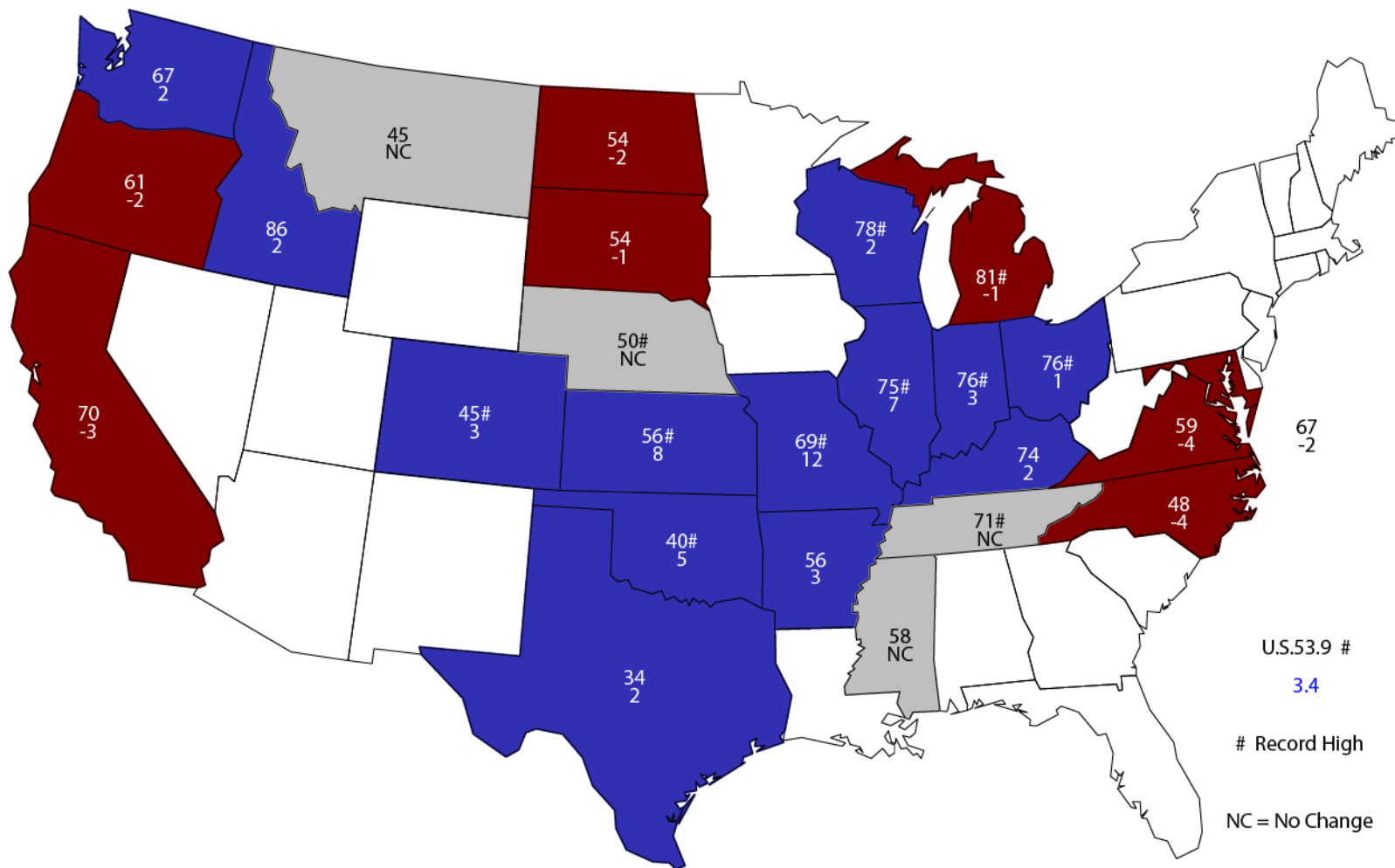
Winter Wheat Yield United States

Bushels per Acre



July 1, 2016 Winter Wheat Yield

Bushels and Change From Previous Month



U.S. 53.9 #

3.4

Record High

NC = No Change



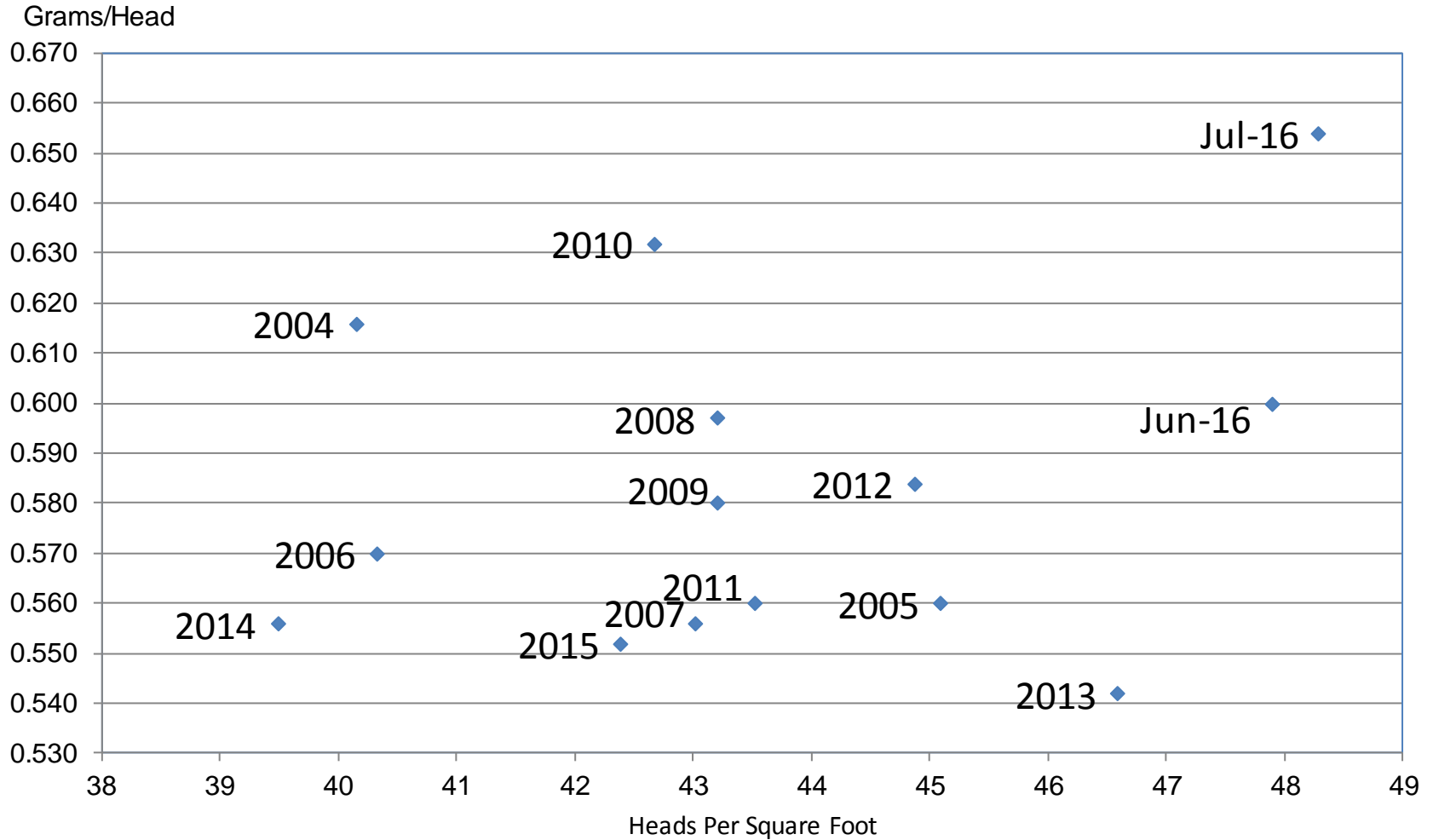
Winter Wheat Objective Yield - July

Percent of Samples Processed in the Lab

Year	Mature ---Percent---
2011	60
2012	77
2013	55
2014	58
2015	64
2016	68

Wheat Objective Yield Region

Heads Per Square Foot vs. Implied Head Weight



Implied Head Weight = Published Yield / (Heads*1.6006)

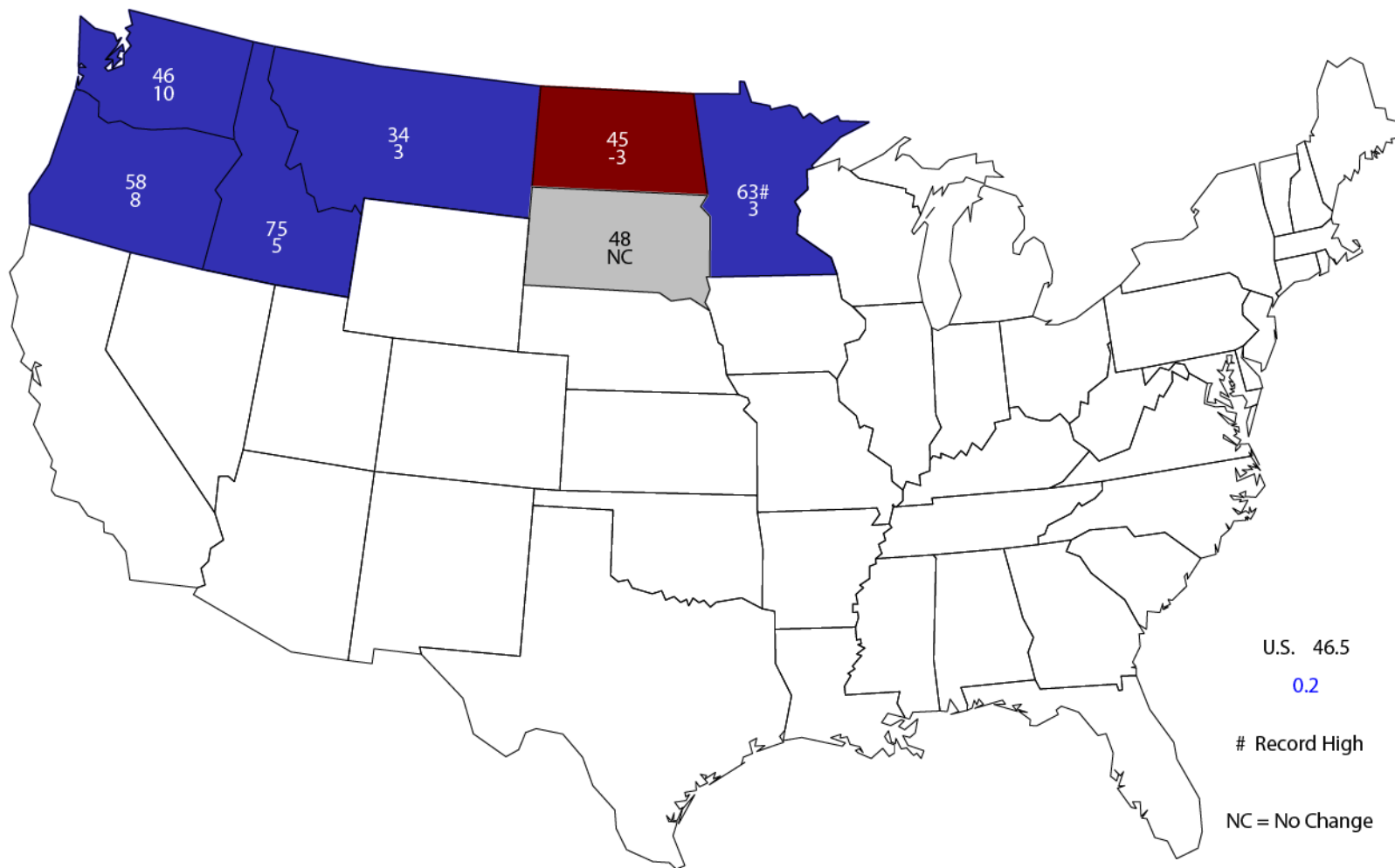


July 2016 Crop Production

Crop	Unit	July 2016	% Change From Previous Forecast	% Change From Previous Season
Wheat, Spring				
Harvested	Mil Ac	11.8	NC	-8.5
Yield	Bu/Ac	46.5	NA	+0.4
Production	Mil Bu	550	NA	-8.1

July 1, 2016 Other Spring Wheat Yield

Bushels and Change From Previous Year



U.S. 46.5

0.2

Record High

NC = No Change



July 2016 Crop Production

Crop	Unit	July 2016	% Change From Previous Forecast	% Change From Previous Season
Wheat, Durum				
Harvested	Mil Ac	2.08	NC	+9.8
Yield	Bu/Ac	39.8	NA	-8.5
Production	Mil Bu	82.8	NA	+0.3



July 2016 Crop Production

Crop	Unit	July 2016	% Change From Previous Forecast	% Change From Previous Season
Wheat, All				
Harvested	Mil Ac	44.1	NC	-6.4
Yield	Bu/Ac	51.3	NA	+17.7
Production	Bil Bu	2.26	NA	+10.2



July 2016 Crop Production

Crop	Unit	July 2016	% Change From Previous Forecast	% Change From Previous Season
Oats				
Harvested	Mil Ac	1.17	NC	-8.7
Yield	Bu/Ac	65.8	NA	-6.3
Production	Mil Bu	76.6	NA	-14.4
Barley				
Harvested	Mil Ac	2.58	NC	-17.1
Yield	Bu/Ac	70.9	NA	+2.9
Production	Mil Bu	183	NA	-14.7



July 2016 Crop Production

Crop	Unit	July 2016	% Change From Previous Forecast	% Change From Previous Season
Production				
Oranges	Mil Tons	5.92	+1.5	-7.0
Grapefruit	Thou Tons	810	-1.8	-9.0
Lemons	Thou Tons	934	+3.8	+3.3
Tangelos	Thou Tons	17.6	NC	-41.3
Tangerines & Mandarins	Thou Tons	948	NC	+10.9



July 2016 Crop Production

Crop	Unit	July 2016	% Change From Previous Estimate	% Change From Previous Season
Tobacco, Flue-Cured				
Harvested	Thou Ac	209	NC	-5.0
Yield	Lbs/Ac	2,324	NA	+5.2
Production	Mil Lbs	486	NA	-0.1



July 2016 Crop Production

Crop	Unit	July 2016	% Change From Previous Forecast	% Change From Previous Season
Production				
Almonds (CA)	Bil Lbs	2.05	+2.5	+7.9
Apricots	Thou Tons	61.4	NA	+47.4



Upcoming Reports

Release Date	Report Title
July 22	Cattle on Feed
July 29	Agricultural Prices
August 1	CAIR: Cotton CAIR: Flour Millings CAIR: Grain Crushings CAIR: Fats & Oils
August 4	Farm Production Expenditures
August 12	Crop Production



United States Department of Agriculture
National Agricultural Statistics Service

All Reports Available At
www.nass.usda.gov

For Questions
202-720-2127
800-727-9540
nass@nass.usda.gov