



United States Department of Agriculture  
**National Agricultural Statistics Service**

---



Cattle Inventory  
Sheep & Goat Inventory  
January 1, 2017

Executive Briefing

# Survey Overview

	January Cattle	January Sheep and Goats
Data collection period	December 31 – January 18	
Sample size	38,000	22,300
Collection methods	Mail, telephone, internet, face-to-face interview	
Primary data items	Total inventory, inventory by class, calf crop	Total inventory, inventory by class, lamb/kid crop

# U.S. Cattle and Calves Revisions

Survey	Item	Initial Estimate (1,000 head)	Current Revision	Current Estimate (1,000 head)
January 1, 2016	All cattle and calves	91,988.0	-70,000 -0.1%	91,918.0
	All cows and heifers that have calved	39,646.2	-170,000 -0.4%	39,476.2
	Calf crop	34,301.7	-215,000 -0.6%	34,086.7



# U.S. Cattle Inventory January 1



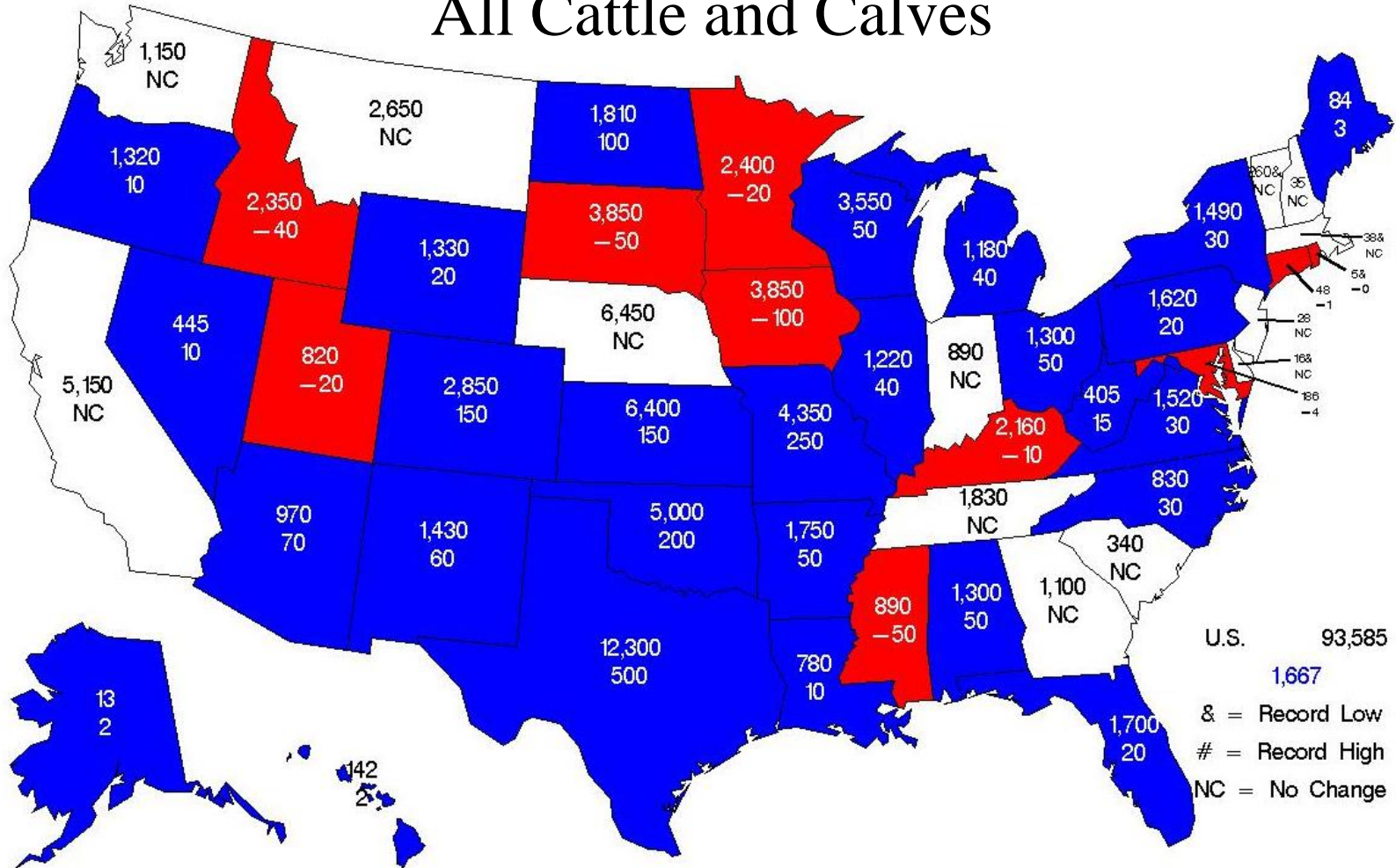
Items	2016 (1,000 head)	2017 (1,000 head)	% PY
All cattle and calves	91,918	93,585	102
All cows and heifers that have calved	39,476	40,559	103
Beef cows	30,166	31,210	103
Milk cows	9,310	9,349	100
All heifers 500 pounds and over	19,907	20,052	101
For beef cow replacement	6,340	6,419	101
Beef replacements expected to calve	3,937	4,000	102
For milk cow replacement	4,814	4,754	99
Milk replacements expected to calve	3,112	3,072	99
Other heifers	8,753	8,879	101
Steers 500 pounds and over	16,315	16,354	100
Bulls 500 pounds and over	2,142	2,234	104
Calves under 500 pounds	14,077	14,386	102
All cattle on feed	13,157	13,067	99
Previous year calf crop	34,087	35,083	103

Totals may not add due to rounding

January 31, 2017

# January 1, 2017 Inventory

## All Cattle and Calves



### Legend

(1,000 head)

- January 1, 2017 Inventory
- Number of Head Change from Previous Year

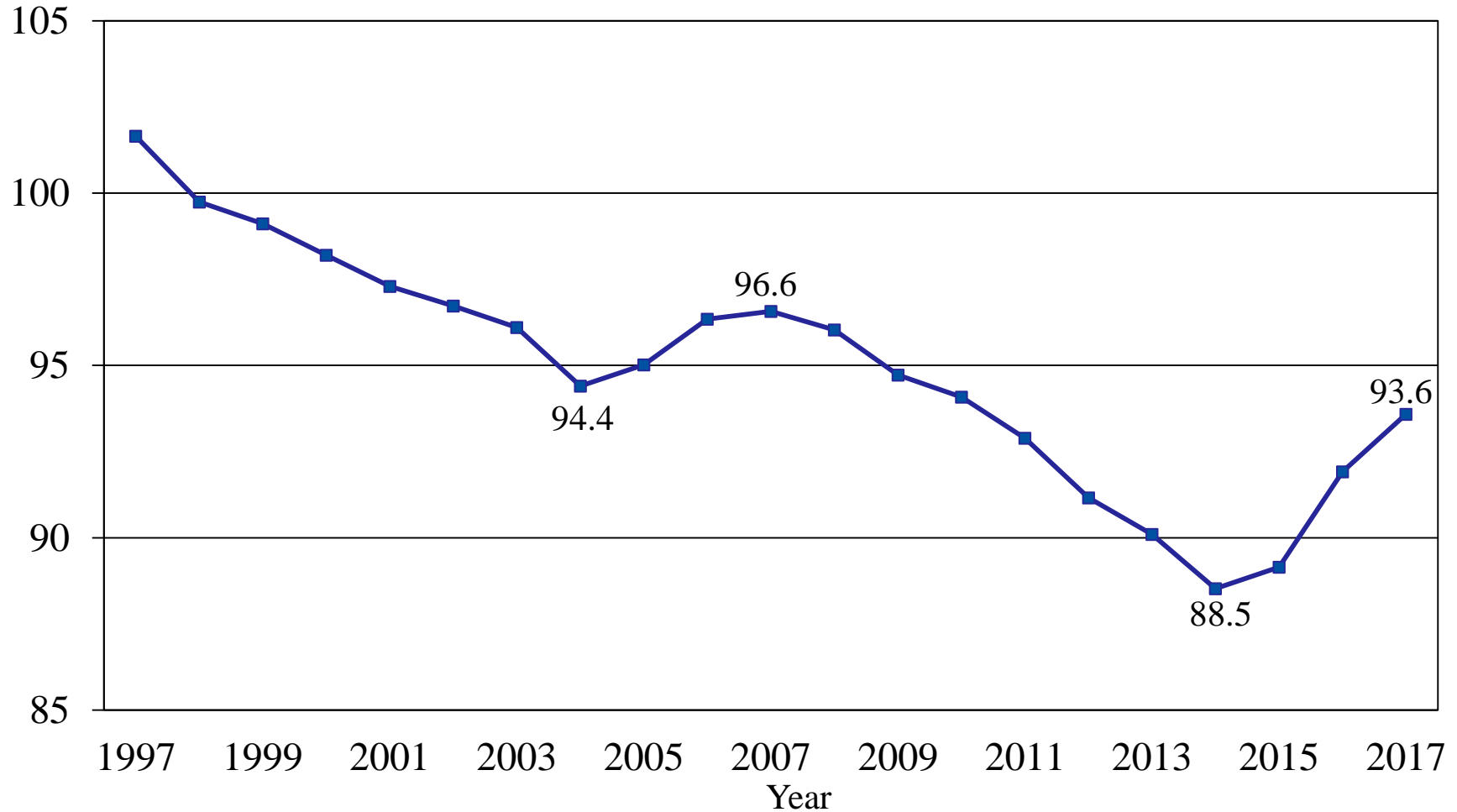


# U.S. All Cattle and Calves

## January 1, 1997 - 2017



Million head

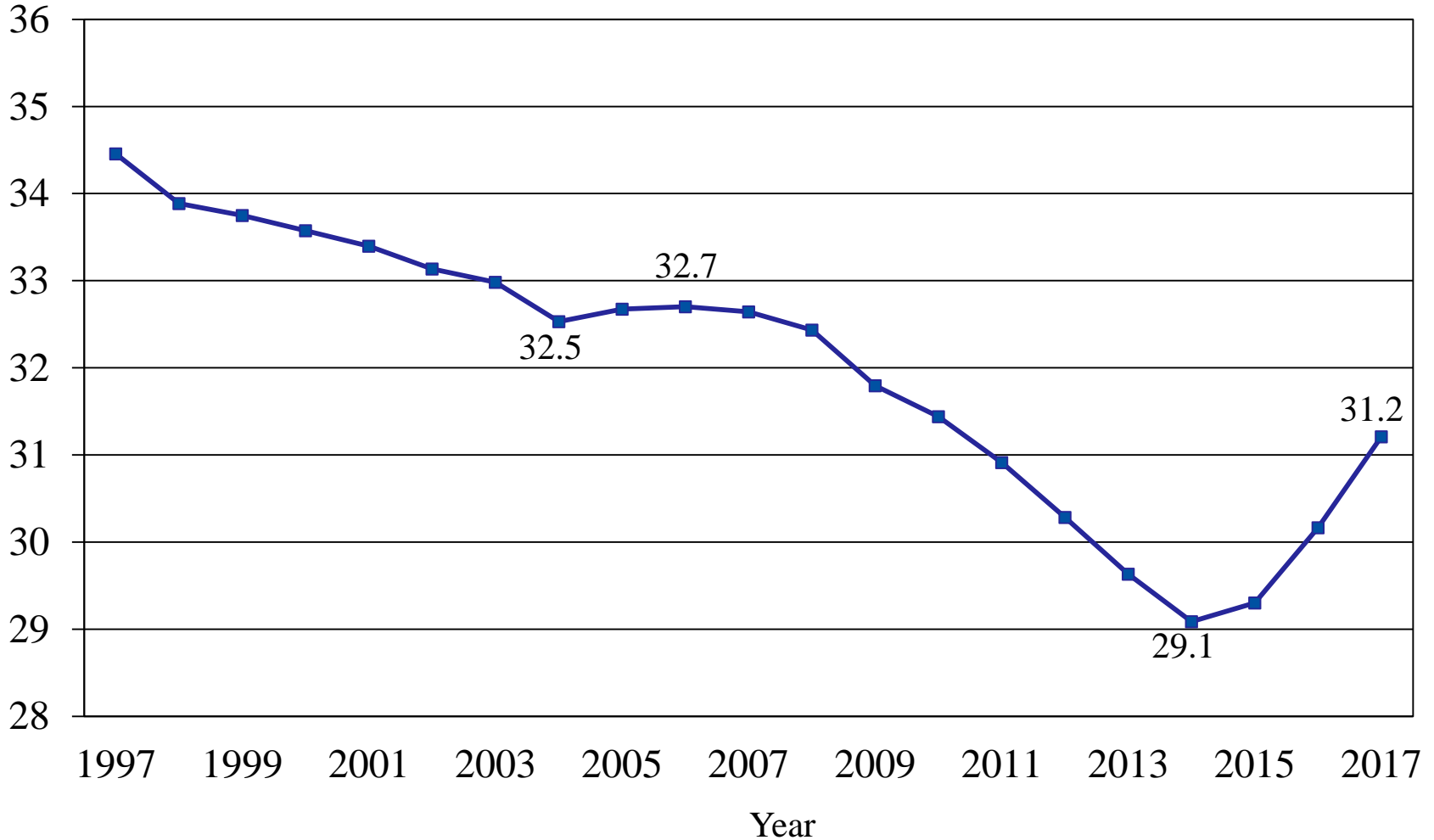


January 31, 2017

# U.S. Beef Cows

## January 1, 1997 - 2017

Million head





# NASS Estimates Compared to Trade Expectations Percent of Previous Year



Inventory Items	NASS Estimate	Trade Average	Trade Range
All cattle and calves	101.8%	100.8%	99.9 – 101.3%
All cows and heifers that have calved	102.7%	101.0%	99.5 – 102.0%
Beef cows	103.5%	101.1%	99.2 – 102.1%
Milk cows	100.4%	100.4%	99.8 – 101.0%
Calf crop	102.9%	101.7%	101.4 – 102.0%
All cattle on feed	99.3%	99.0%	98.8 – 99.4%

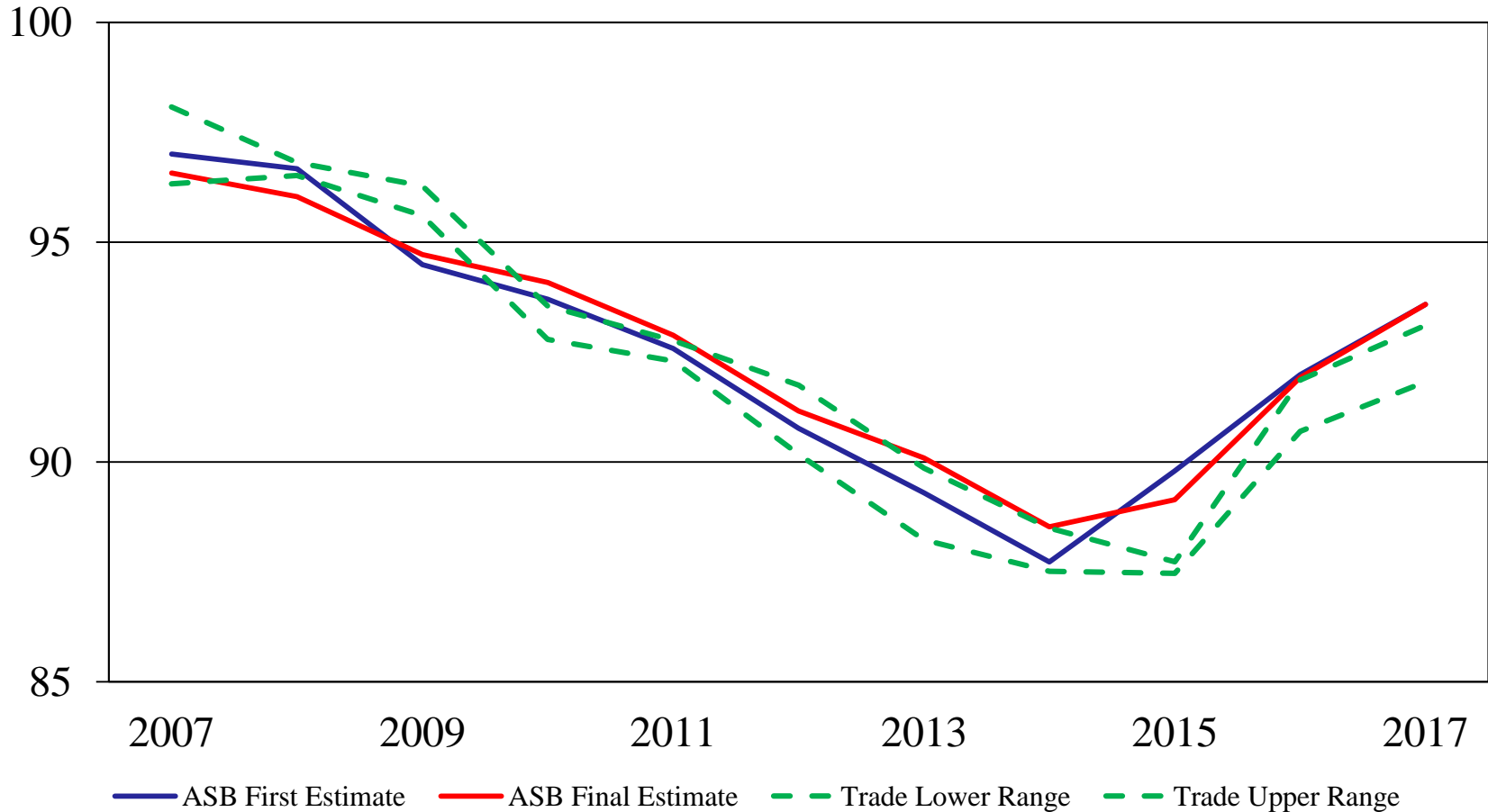


# All Cattle and Calves Inventory

## First Estimate versus Final Estimate

January 1, 2007 - 2017

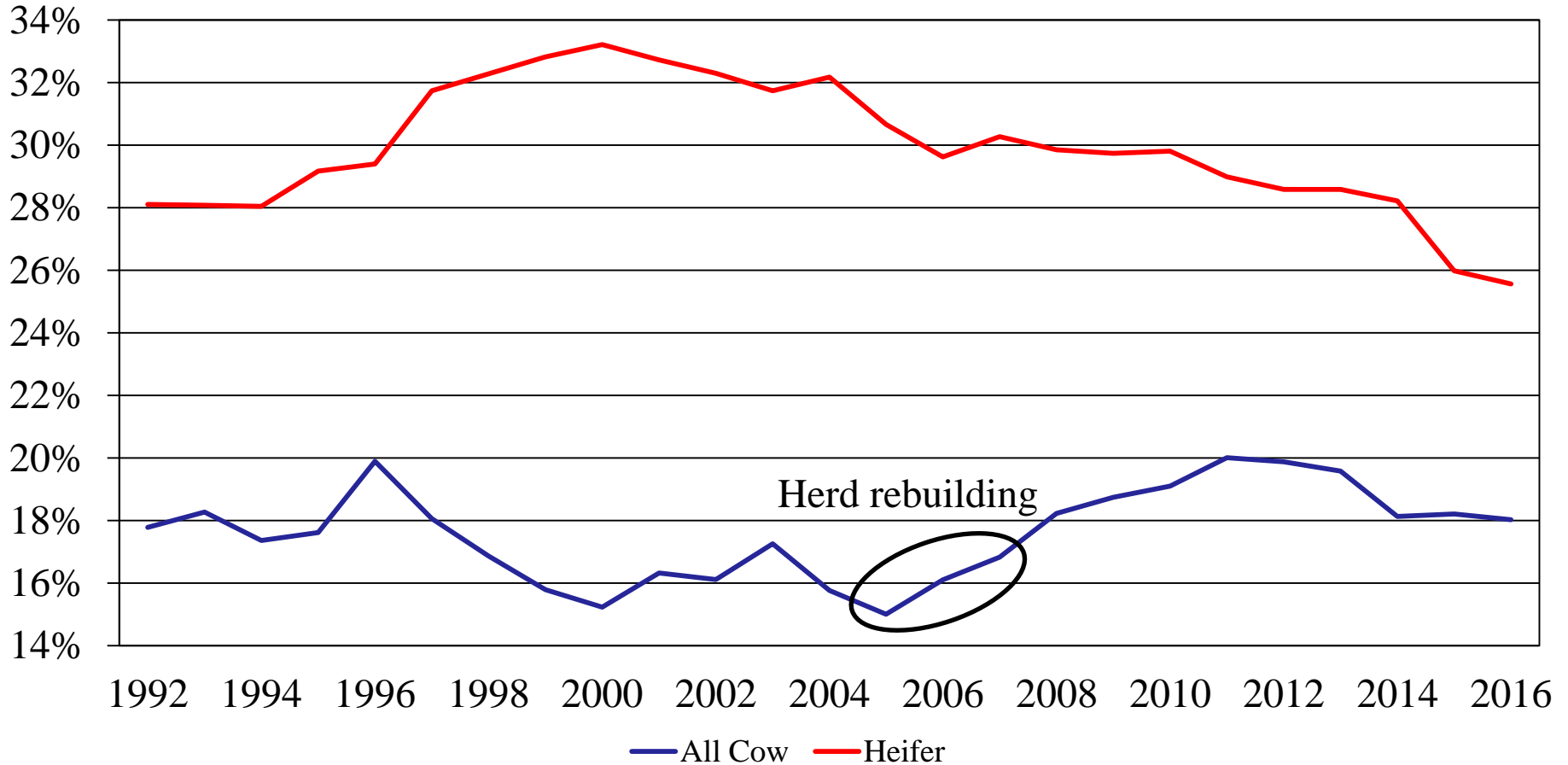
Million head



Year

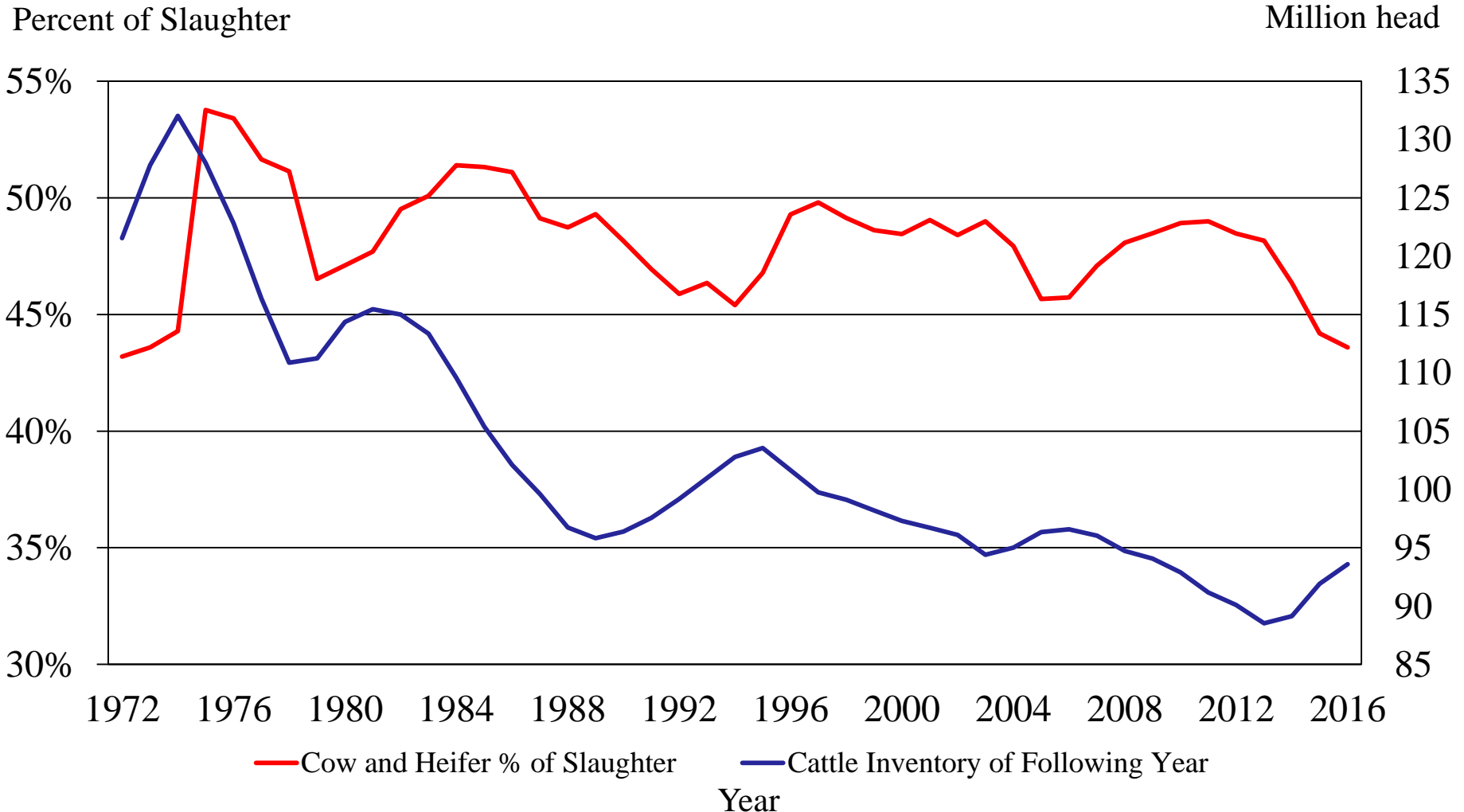
# All Cow & Heifer Slaughter as a Percent of Total Slaughter

Percent of Slaughter



Year

# Cattle Inventory vs Cow and Heifer Slaughter as a Percent of Slaughter





# U.S. Feeder Cattle Supply on January 1



Item	2016 (1,000 head)	2017 (1,000 head)	% PY
Calves under 500 pounds	14,077	14,386	102
Steers and other heifers 500 pounds and over	25,069	25,232	101
Total supply	39,145	39,619	101
All cattle on feed	13,157	13,067	99
Feeder cattle supply	25,988	26,552	102
Number grazing on small grain pasture, 3 States	1,900	1,800	95
Kansas, Oklahoma, Texas			

Totals may not add due to rounding

January 31, 2017

# U.S. Sheep Revisions

Survey	Item	Initial Estimate (1,000 head)	Current Revision	Current Estimate (1,000 head)
January 1, 2016	All sheep and lambs	5,320	-20,000 -0.4%	5,300
	Lamb crop	3,440	-165,000 -4.8%	3,275



# U.S. Sheep and Lamb Inventory

## January 1



Items	2016 (1,000 head)	2017 (1,000 head)	% PY
All sheep and lambs	5,300	5,200	98
Market	1,355	1,345	99
Breeding	3,945	3,855	98
Replacement lambs under one year old	665	650	98
Ewes one year old and older	3,105	3,035	98
Rams one year old and older	175	170	97
Previous year lamb crop	3,275	3,250	99

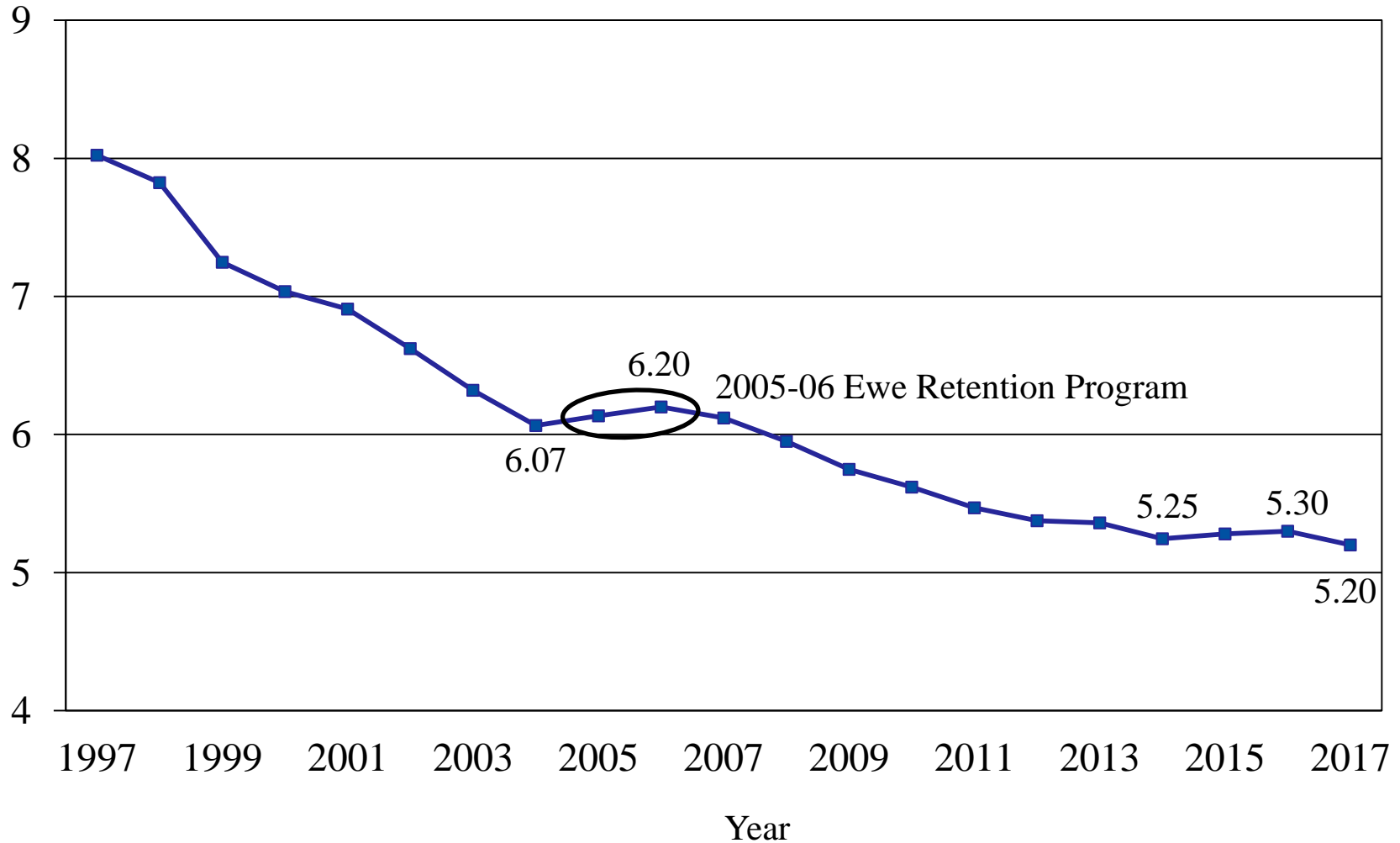
Totals may not add due to rounding

January 31, 2017

# U.S. Sheep and Lambs

## January 1, 1997 - 2017

Million head



# U.S. Goats Revisions

Survey	Item	Initial Estimate (1,000 head)	Current Revision	Current Estimate (1,000 head)
January 1, 2016	All goats and kids	2,620	-	2,620
	Kid crop	1,677	-46,000 -2.7%	1,631





# U.S. Goat and Kid Inventory

## January 1



Items	2016 (1,000 head)	2017 (1,000 head)	% PY
All goats and kids	2,620	2,640	101
Market	459	469	102
Breeding	2,161	2,171	100
Replacement kids under one year old	391	393	101
Does one year old and older	1,607	1,614	100
Bucks one year old and older	163	164	101
Previous year kid crop	1,631	1,641	101

Totals may not add due to rounding

January 31, 2017



# U.S. Goat Inventory by Type

## January 1



Items	2016 (1,000 head)	2017 (1,000 head)	% PY
All goats	2,620	2,640	101
Meat and other	2,097	2,115	101
Milk	373	373	100
Angora	150	152	101

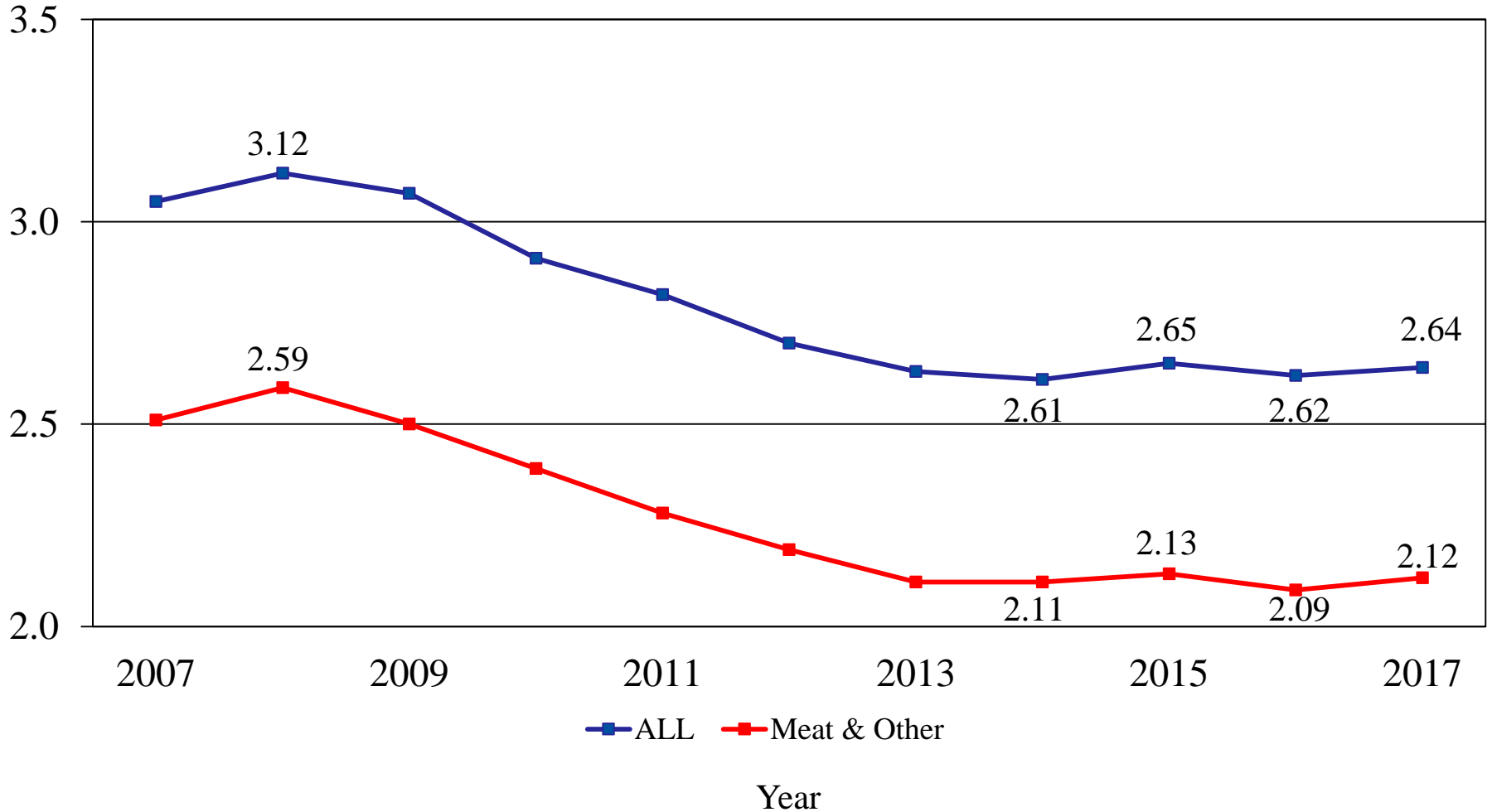
Totals may not add due to rounding

January 31, 2017

# U.S. All Goats Inventory versus Meat and Other Goats Inventory

Million head

January 1, 2007 - 2017





# Upcoming NASS Reports



Release Date	Report Title
February 1	Cotton System Fats & Oils Flour Milling Grain Crushings
February 9	Crop Production
February 17	Farm & Land in Farms
February 21	Milk Production
February 23	Cold Storage Cold Storage – Annual Livestock Slaughter
February 24	Cattle on Feed
February 28	Agricultural Prices



United States Department of Agriculture  
**National Agricultural Statistics Service**

---



All Reports Available At  
[www.nass.usda.gov](http://www.nass.usda.gov)

For Questions  
(202) 720-3570  
(800) 727-9540  
[nass@nass.usda.gov](mailto:nass@nass.usda.gov)