



United States Department of Agriculture  
**National Agricultural Statistics Service**

---

---

**Small Grains Summary**  
**Grain Stocks**  
Executive Summary

Anthony Prillaman, Head  
Field Crops Section



# Contents

Field Crops	Grain Stocks	Oilseed Stocks
Wheat	Corn	Soybeans
Barley	Wheat	Sunflower
Oats	Barley	Safflower
Rye	Oats	Mustard Seed
	Sorghum	



# Survey Overview

	September Ag Survey	Off- Farm Grain Stocks Survey
Survey Type	Farmer Reported	Off-Farm Grain Stock Facilities
Collection Method	Mail, Phone, Internet, Personal Interview	Mail, Phone, Internet, Personal Interview
Crops Included	Barley, Oats, Rye, Wheat	Barley, Corn, Mustard Seed, Oats, Soybean, Safflower, Sorghum, Sunflower, Wheat
States	All Except Hawaii	All States Except AK, HI, and NV
Sample Size	66,155	~ 8,500 Facilities
Collection Period	August 30 – September 18	August 30 – September 16



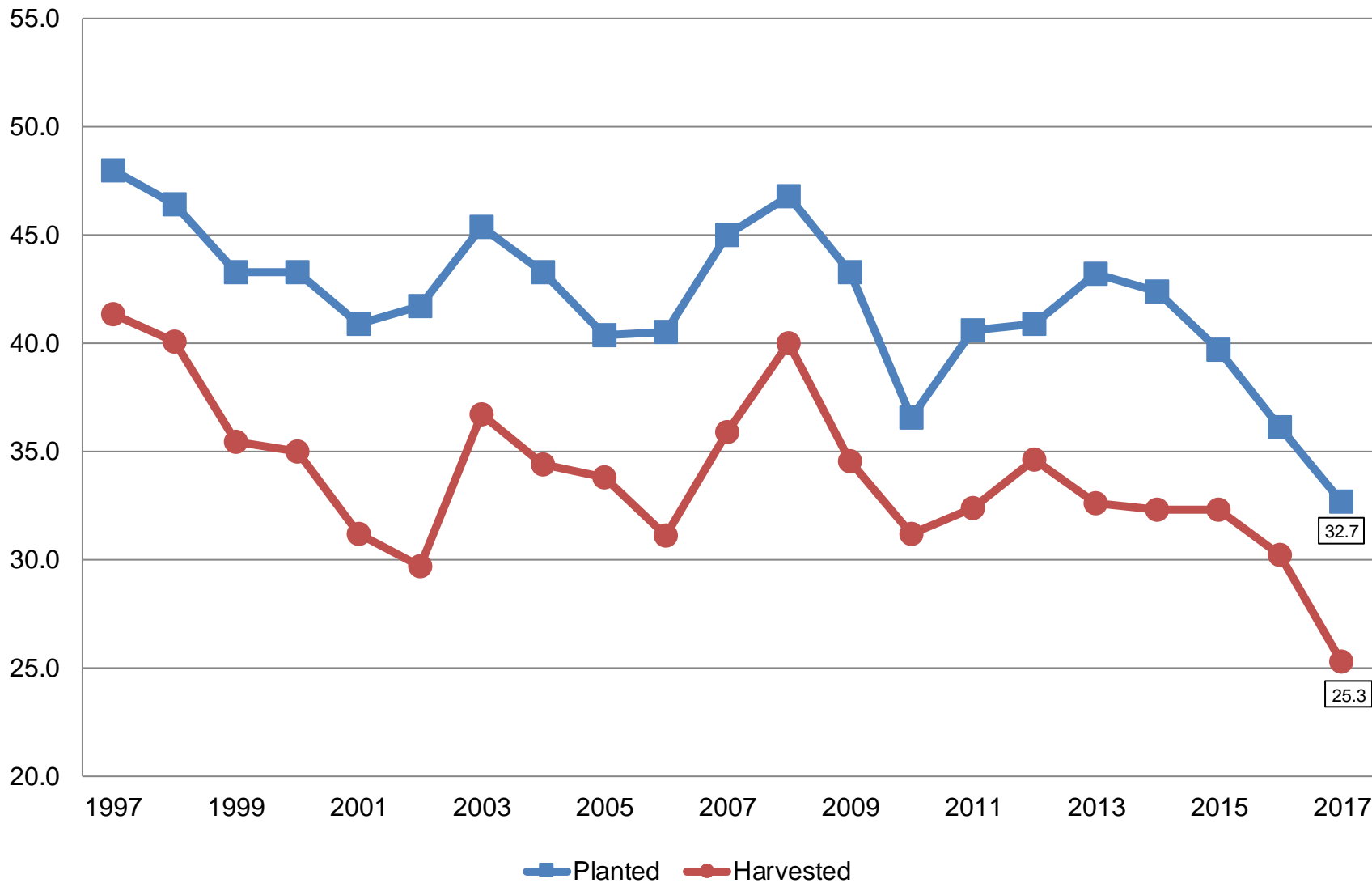
# Small Grains Annual Summary

Crop	Unit	September 2017	% Change From Previous Estimate	% Change From Previous Season
Wheat, Winter				
Planted	Mil Ac	32.7	-0.4	-9.6
Harvested	Mil Ac	25.3	-1.8	-16.4
Yield	Bu/Ac	50.2	+0.4	-9.2
Production	Bil Bu	1.27	-1.4	-24.1

# Winter Wheat Acres

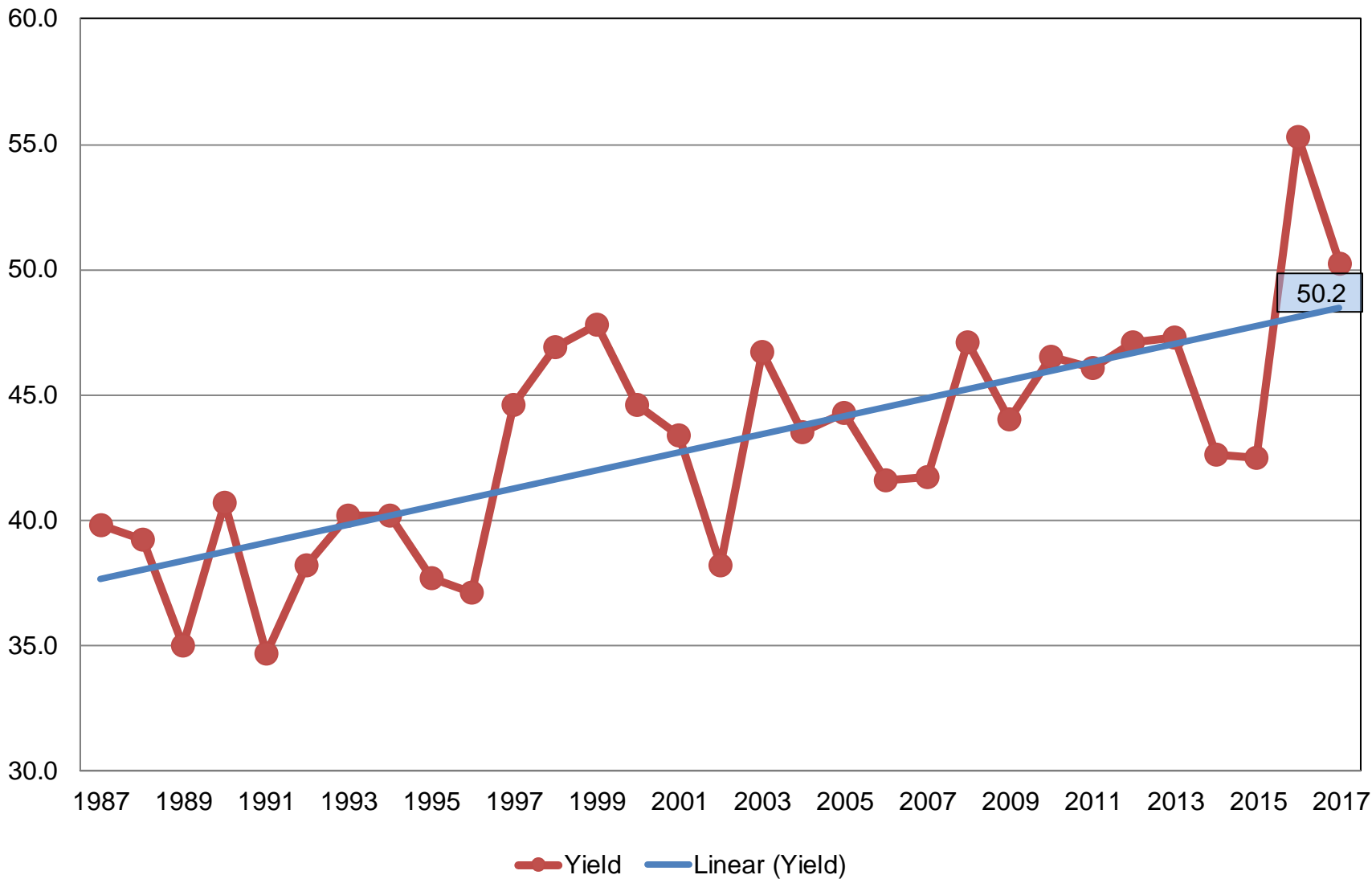
## United States

Million Acres



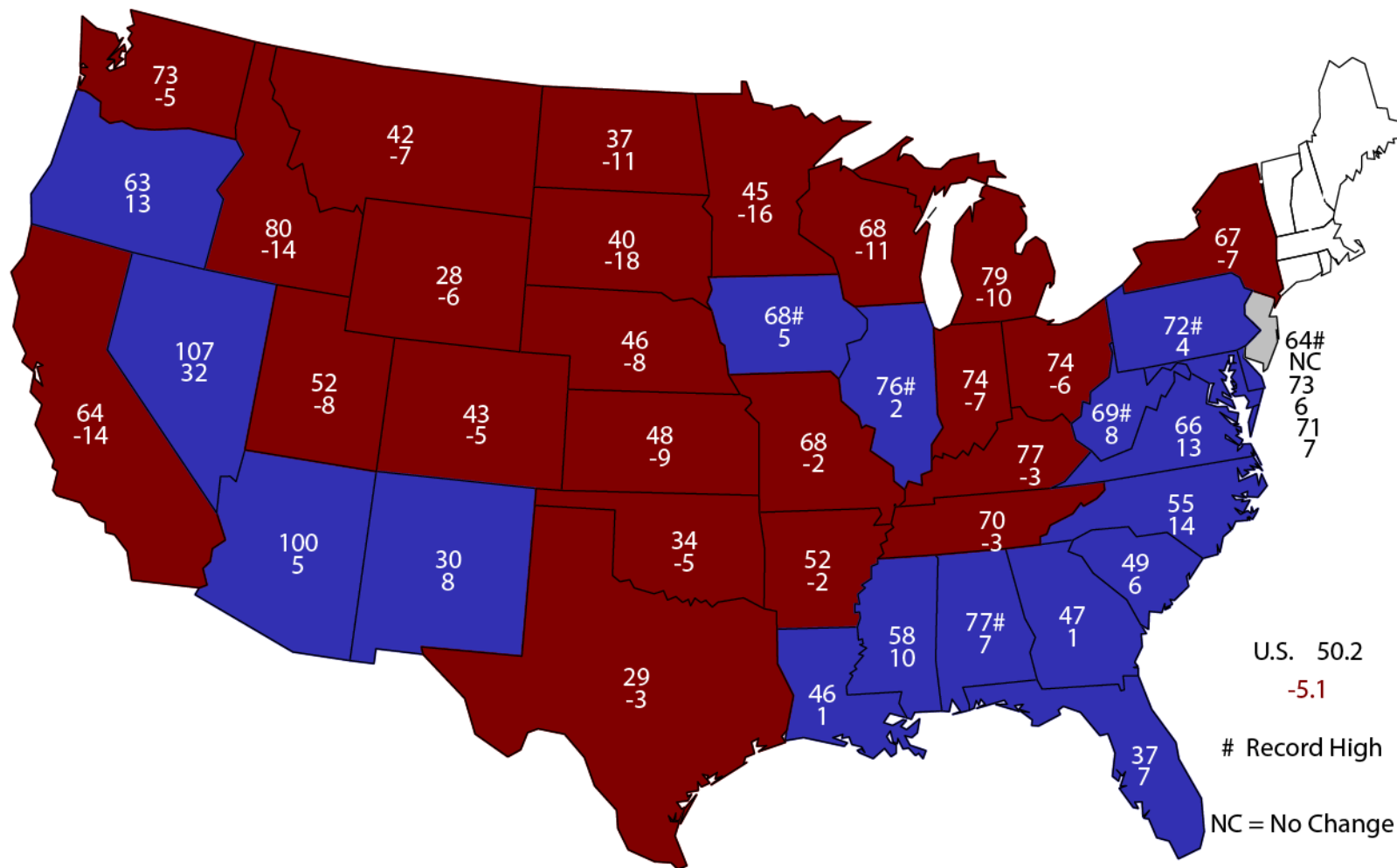
# Winter Wheat Yield United States

Bushels per Acre



# 2017 Winter Wheat Yield

## Bushels and Change From Previous Year



U.S. 50.2  
 -5.1  
 # Record High  
 NC = No Change



# Small Grains Annual Summary

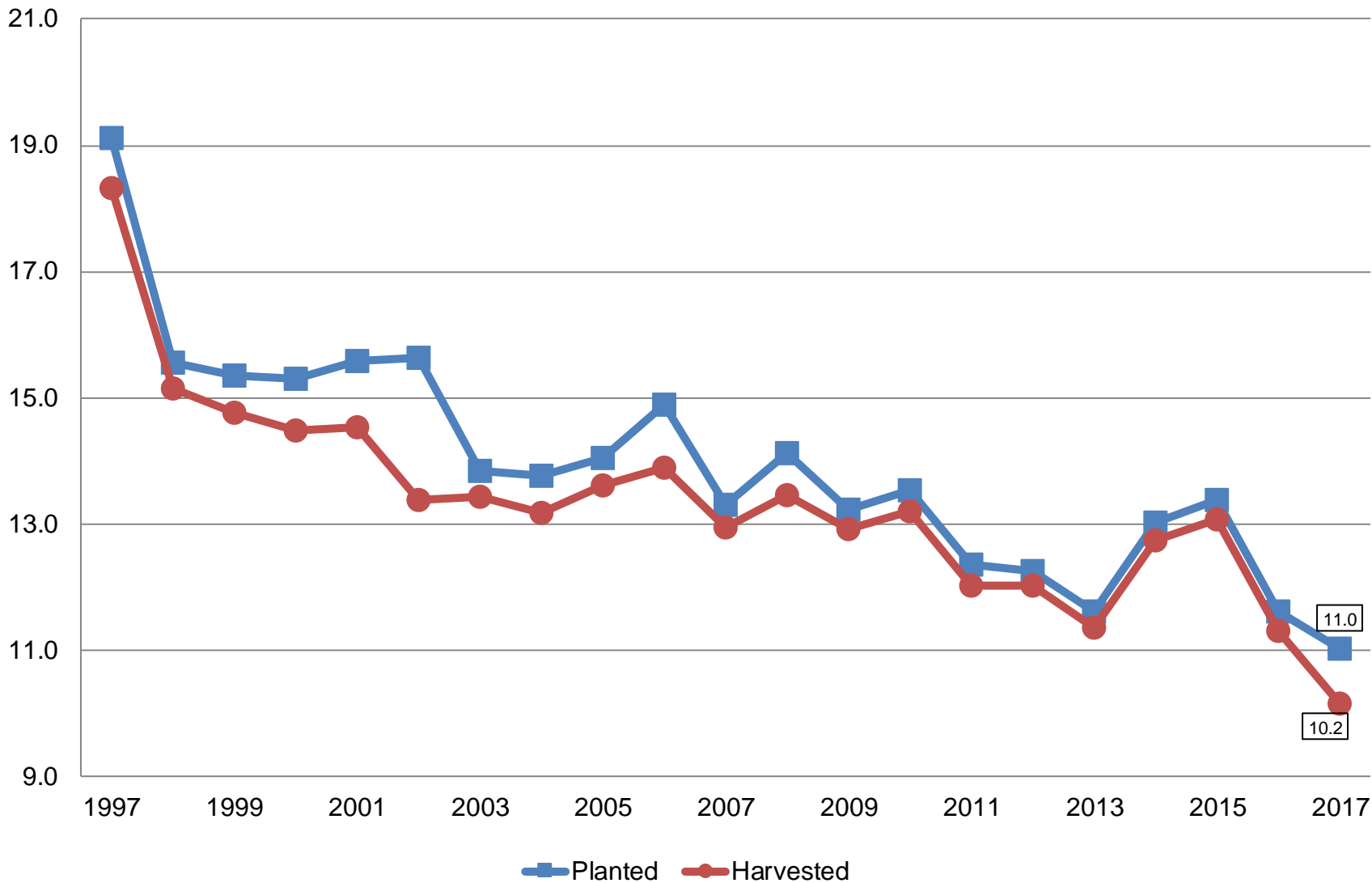
Crop	Unit	September 2017	% Change From Previous Estimate	% Change From Previous Season
Wheat, Spring				
Planted	Mil Ac	11.0	+1.0	-4.7
Harvested	Mil Ac	10.2	-3.2	-9.7
Yield	Bu/Ac	41.0	+7.0	-13.3
Production	Mil Bu	416	+3.7	-21.8





# Other Spring Wheat Acres United States

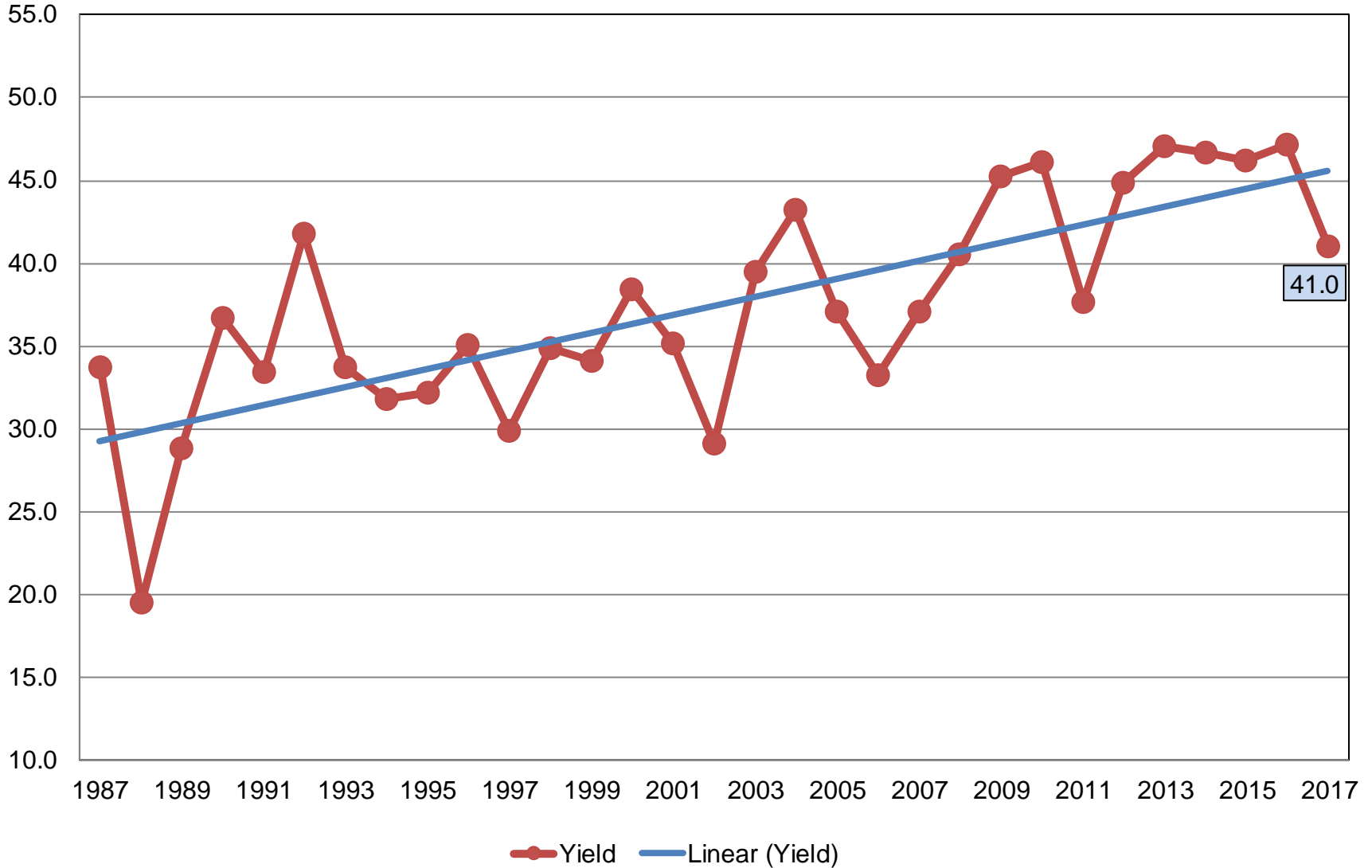
Million Acres





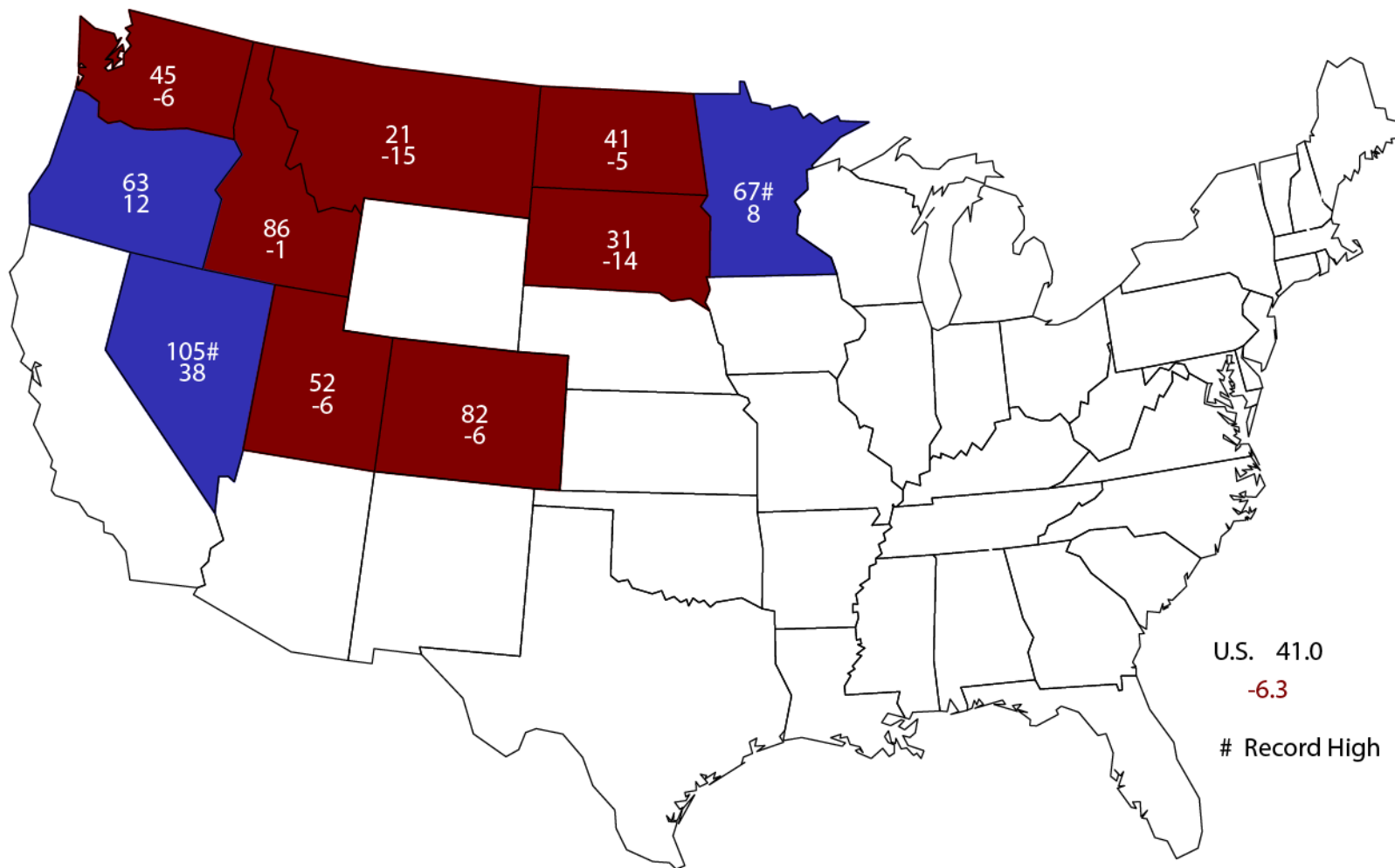
# Other Spring Wheat Yield United States

Bushels per Acre



# 2017 Other Spring Wheat Yield

## Bushels and Change From Previous Year



U.S. 41.0  
-6.3  
# Record High



# Small Grains Annual Summary

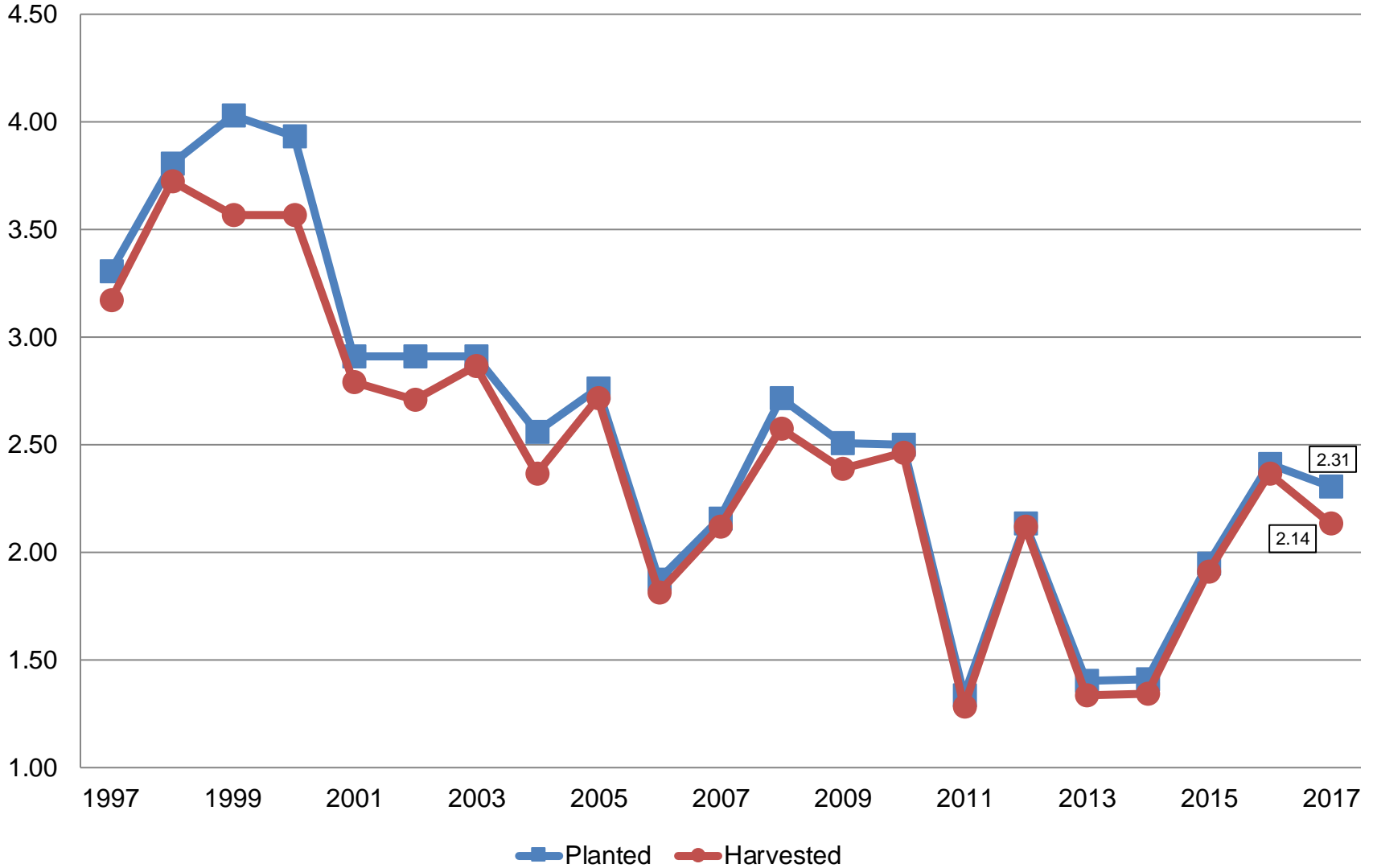
Crop	Unit	September 2017	% Change From Previous Estimate	% Change From Previous Season
Wheat, Durum				
Planted	Mil Ac	2.31	+20.2	-4.4
Harvested	Mil Ac	2.14	+15.0	-9.5
Yield	Bu/Ac	25.7	-5.5	-41.6
Production	Mil Bu	54.9	+8.7	-47.2



# Durum Wheat Acres

## United States

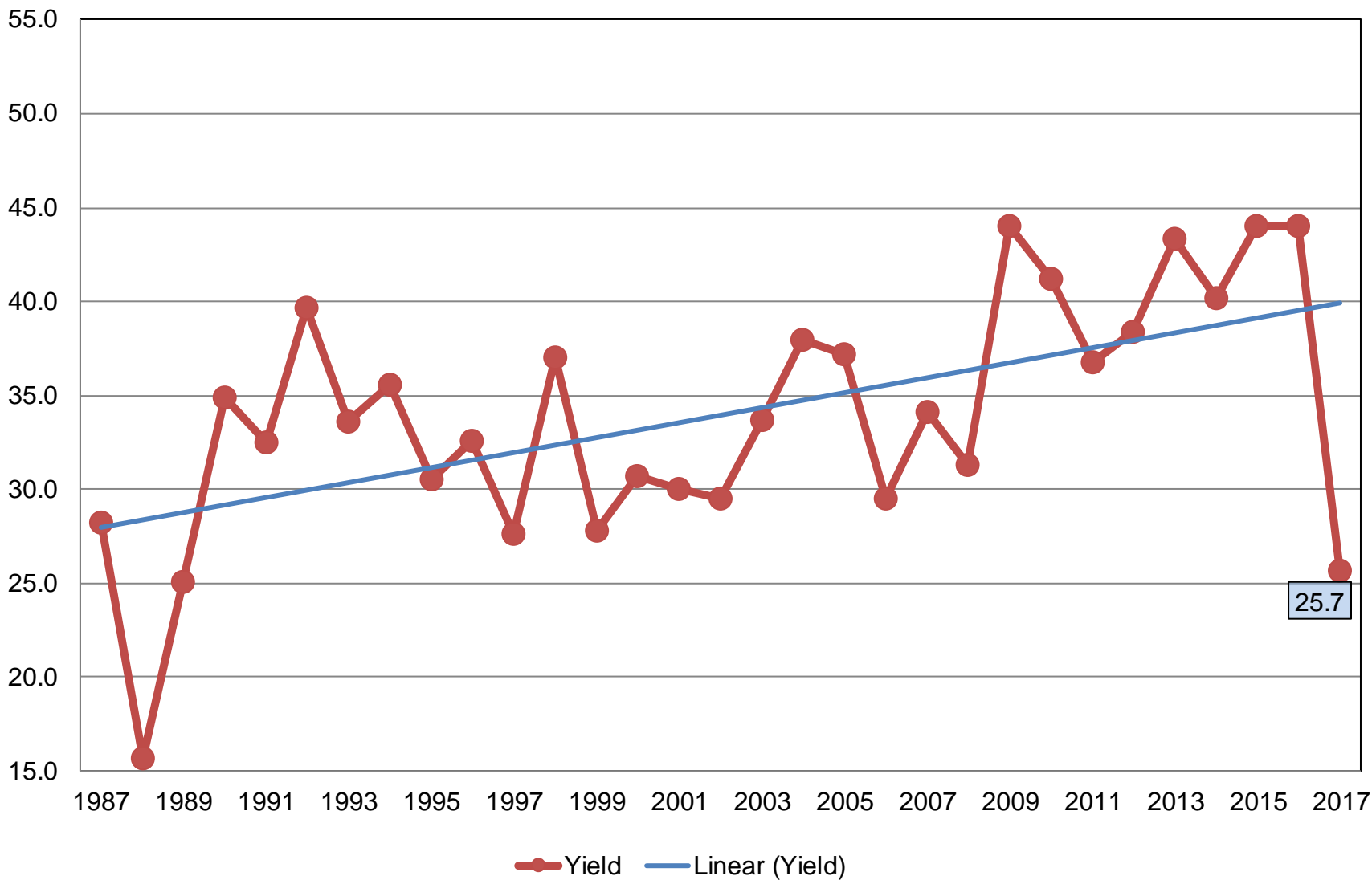
Million Acres



# Durum Wheat Yield

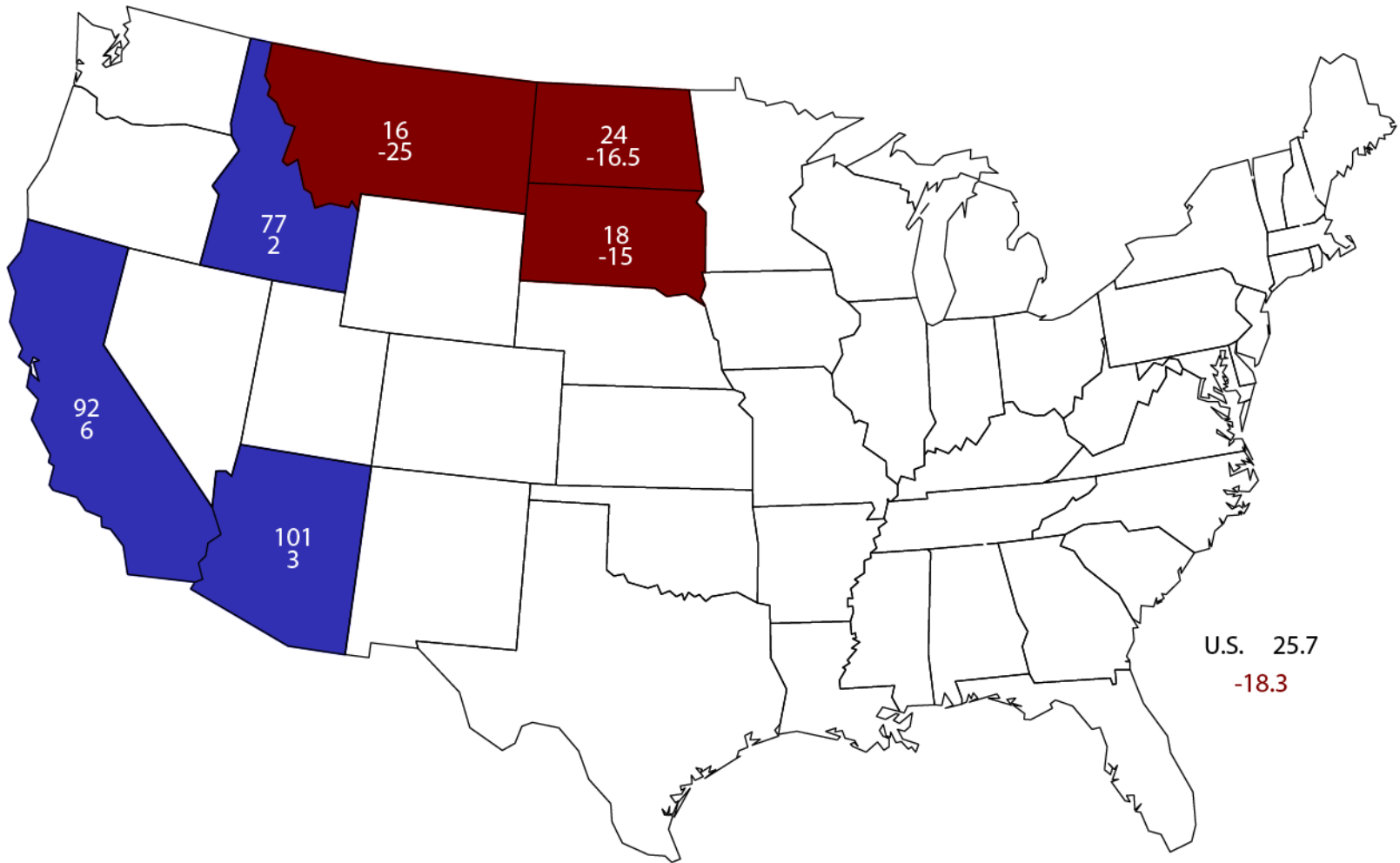
## United States

Bushels per Acre



# 2017 Durum Wheat Yield

## Bushels and Change From Previous Year





# Small Grains Annual Summary

Crop	Unit	September 2017	% Change From Previous Estimate	% Change From Previous Season
Wheat, All				
Planted	Mil Ac	46.0	+0.8	-8.2
Harvested	Mil Ac	37.6	-1.4	-14.3
Yield	Bu/Ac	46.3	+1.5	-12.1
Production	Bil Bu	1.74	+0.1	-24.6





# Small Grains Annual Summary

Crop	Unit	September 2017	% Change From Previous Estimate	% Change From Previous Season
Barley				
Planted	Mil Ac	2.48	+4.4	-18.9
Harvested	Mil Ac	1.95	+0.4	-23.8
Yield	Bu/Ac	72.6	+0.7	-6.8
Production	Mil Bu	142	+1.2	-29.0



# Small Grains Annual Summary

Crop	Unit	September 2017	% Change From Previous Estimate	% Change From Previous Season
Oats				
Planted	Mil Ac	2.59	+2.1	-8.5
Harvested	Mil Ac	0.801	-9.0	-18.3
Yield	Bu/Ac	61.7	+1.1	-6.5
Production	Mil Bu	49.4	-8.1	-23.7



# Small Grains Annual Summary

Crop	Unit	September 2017	% Change From Previous Estimate	% Change From Previous Season
Rye				
Planted	Mil Ac	1.96	-8.1	+3.7
Harvested	Mil Ac	0.286	-33.5	-30.9
Yield	Bu/Ac	33.9	NA	+4.3
Production	Mil Bu	9.70	NA	-27.9



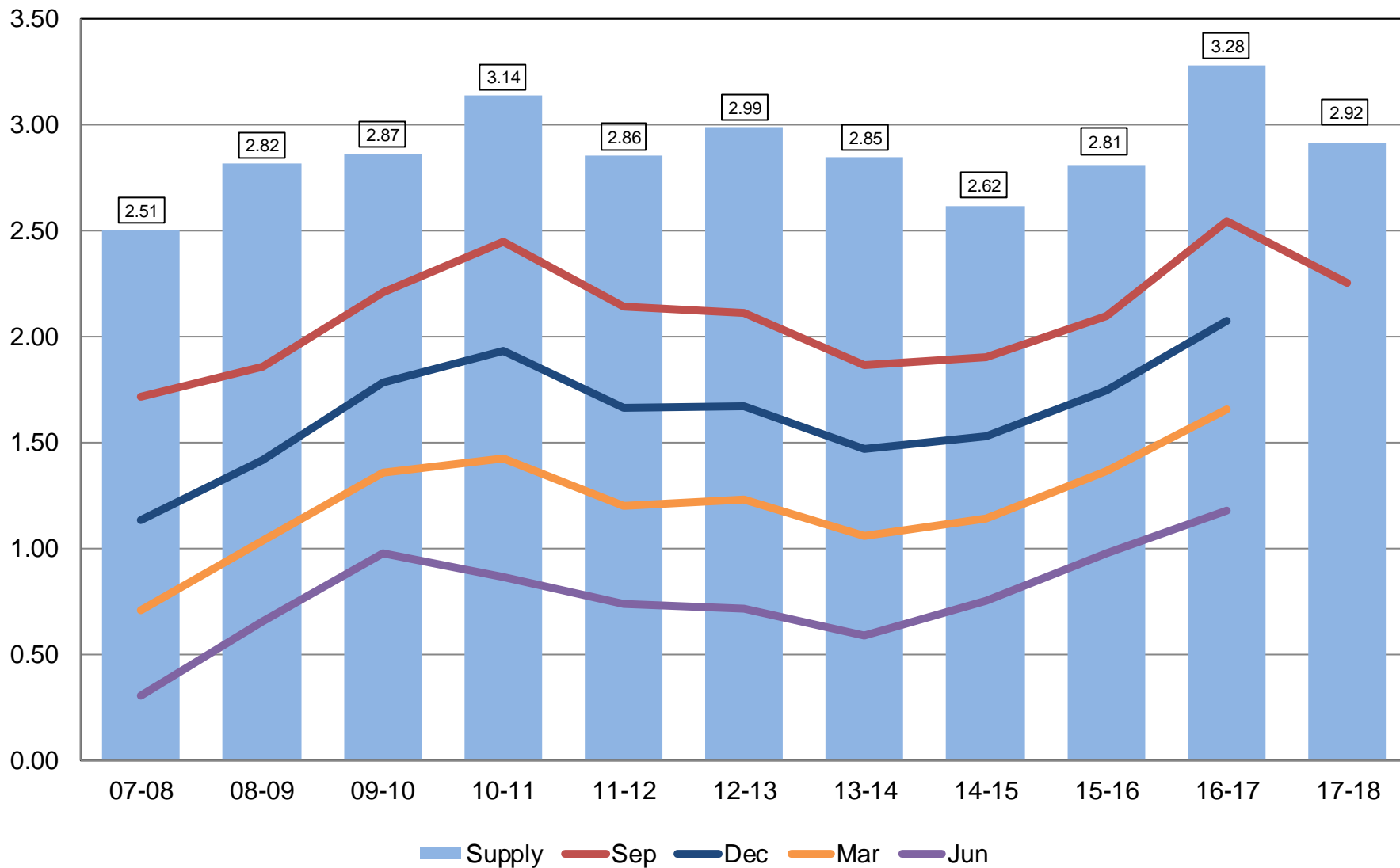
# Percent of Acres Left to be Harvested

## United States

Crop	2015	2016	2017
	<i>Percent</i>		
Other Spring Wheat	4.8	8.4	8.1
Durum Wheat	9.2	17.0	8.5
Barley	3.0	5.7	7.0
Oats	8.6	7.7	13.4

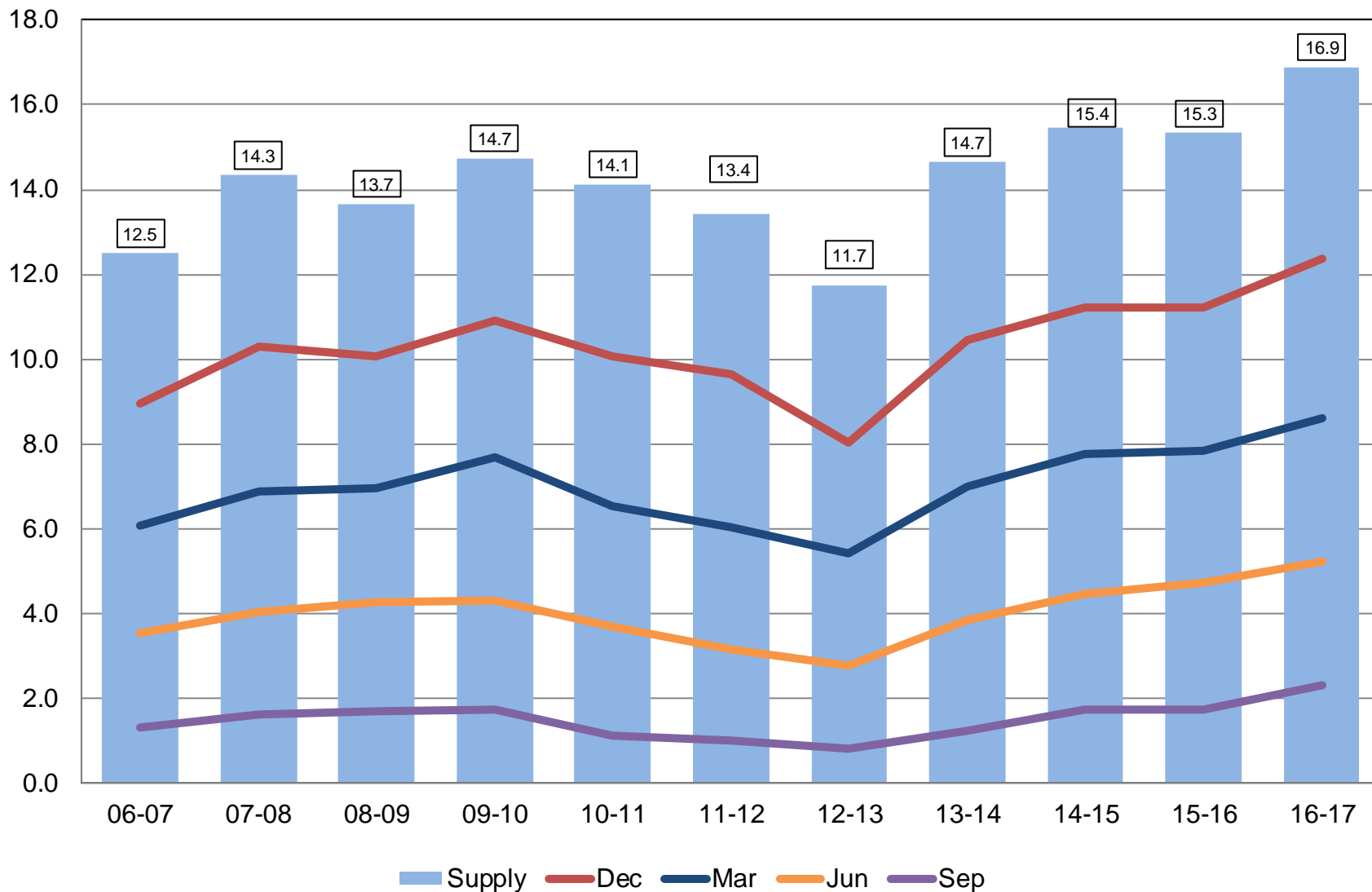
# All Wheat Stocks United States

Billion Bushels



# Corn Stocks United States

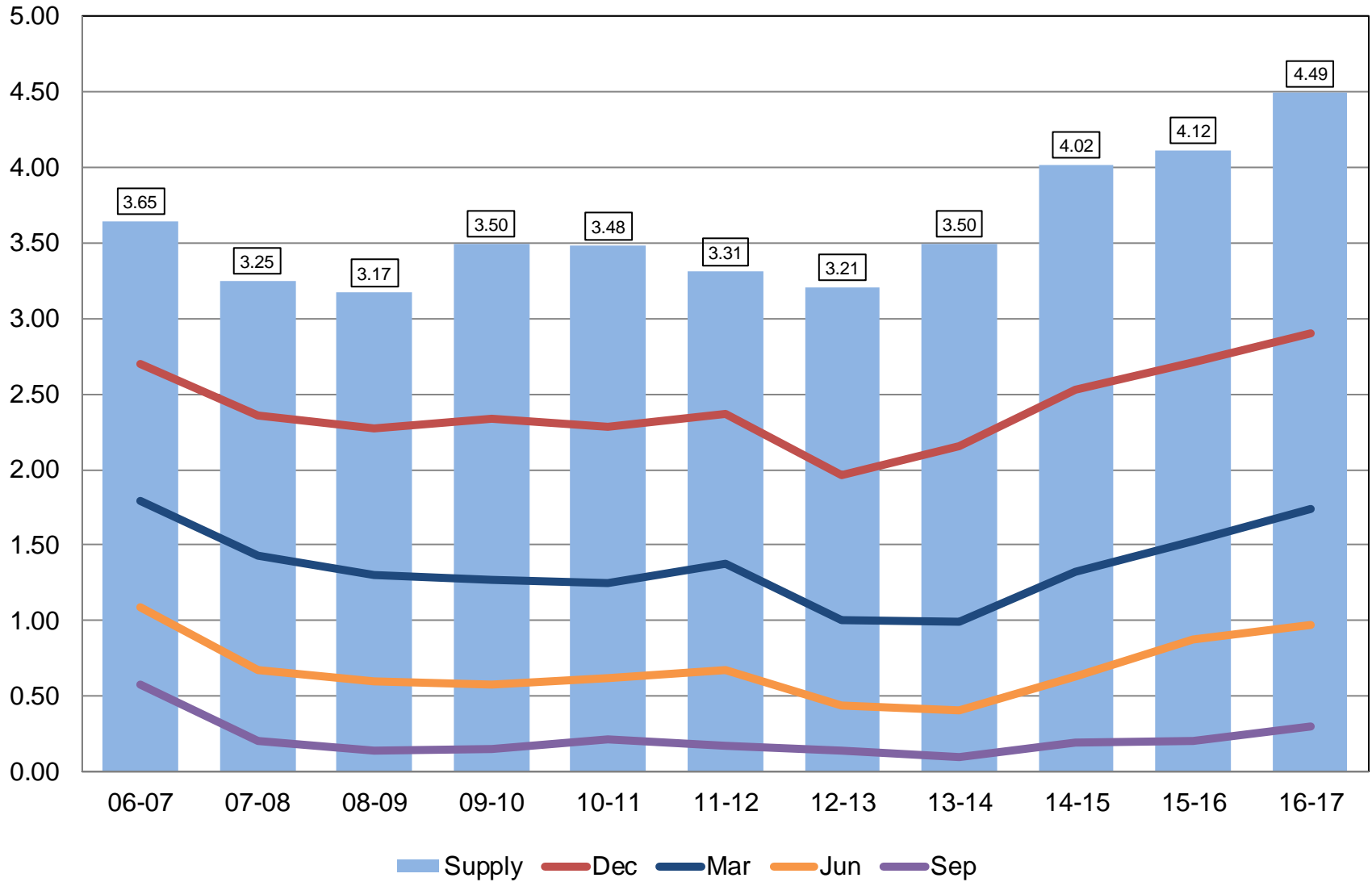
Billion Bushels





# Soybean Stocks United States

Billion Bushels





# 2016 Soybean Crop

	Previous Estimates	Sept 29 Estimates	Change
	<i>Million Bushels</i>		
Sept 1, 2016 Beginning Stocks	197	197	NC
2016 Production	4,307	4,296	-11
Imports	*25	*25	NC
<b>Total Supply</b>	<b>4,529</b>	<b>4,518</b>	<b>-11</b>
Crushings	*1,895	*1,895	NC
Exports	*2,170	*2,170	NC
Seed	*104	*104	NC
Measured Disappearance	*4,169	*4,169	NC
Ending Stocks	*345	301	-44
Residual	14	48	+34

\*WAOB Forecast – September WASDE Report





# September 1, 2017 Grain Stocks

Crop	Unit	September 2017	% Change From Previous Estimate	% Change From Previous Year
Stocks				
Barley	Mil Bu	180	NA	-22.0
Oats	Mil Bu	71.8	NA	-8.6
Sorghum	Mil Bu	33.5	NA	-8.4



# September 1, 2017 Oilseed Stocks

Crop	Unit	September 2017	% Change From Previous Estimate	% Change From Previous Year
Stocks				
All Sunflower	Mil Lbs	649	NA	+57.5
Safflower	Mil Lbs	18.7	NA	+26.4
Mustard Seed	Mil Lbs	7.06	NA	(D)



# Upcoming Reports

Release Date	Report Title
October 2	CAIR: Cotton CAIR: Grain Crushings CAIR: Fats & Oils
October 12	Crop Production Cotton Ginnings
October 20	Cattle on Feed
October 24	Cotton Ginnings
October 27	Rice Stocks
October 30	Ag Prices

**STAT  
CHAT  
SERIES**

Join @usda\_nass using #StatChat to ask about the *Grain Stocks* and *Small Grains Summary* reports.

@usda\_nass  
**#STATCHAT**



**FRI  
SEPT 29  
1PM ET**





# USDA NASS Data Users' Meeting

**Tuesday, October 24, 2017  
Kansas City, Missouri**

LEARN MORE and REGISTER HERE

[https://www.nass.usda.gov/go/Data\\_Users/](https://www.nass.usda.gov/go/Data_Users/)

HELLO  
**KANSAS CITY**

A nighttime photograph of the Kansas City skyline, featuring the illuminated Old Courthouse and a fountain in the foreground.

United States Department of Agriculture  
National Agricultural Statistics Service



United States Department of Agriculture  
**National Agricultural Statistics Service**

---

---

**All Reports Available At**  
[www.nass.usda.gov](http://www.nass.usda.gov)

**For Questions**  
202-720-2127  
800-727-9540  
[nass@nass.usda.gov](mailto:nass@nass.usda.gov)