



United States Department of Agriculture
National Agricultural Statistics Service

October Crop Production
Executive Summary

Lance Honig, Chief
Crops Branch



Contents

Field Crops	Fruit & Nuts	Specialty Crops
Corn	Citrus	Dry Beans
Soybeans	Pecans	Tobacco
Cotton		Sugarbeets
Rice		Sugarcane
Peanuts		
Sorghum		
Alfalfa Hay		
Other Hay		
Canola		
Sunflowers		



Survey Overview

Florida Citrus

	Tree Inventory	Limb Count	Objective Surveys (Size and Drop)	Fruit Maturity
Survey Type	Field Observations	Field Observations	Field Observations	Laboratory Tests
Crops Included	All	All	All	Oranges, Grapefruit
Sample Size	247,550.3 acres	3,361 groves	1,984 groves	424 samples
Collection Period	July 1, 2018 – July 1, 2019	July 8 – September 16	September 3 - 25	September 23 - 24

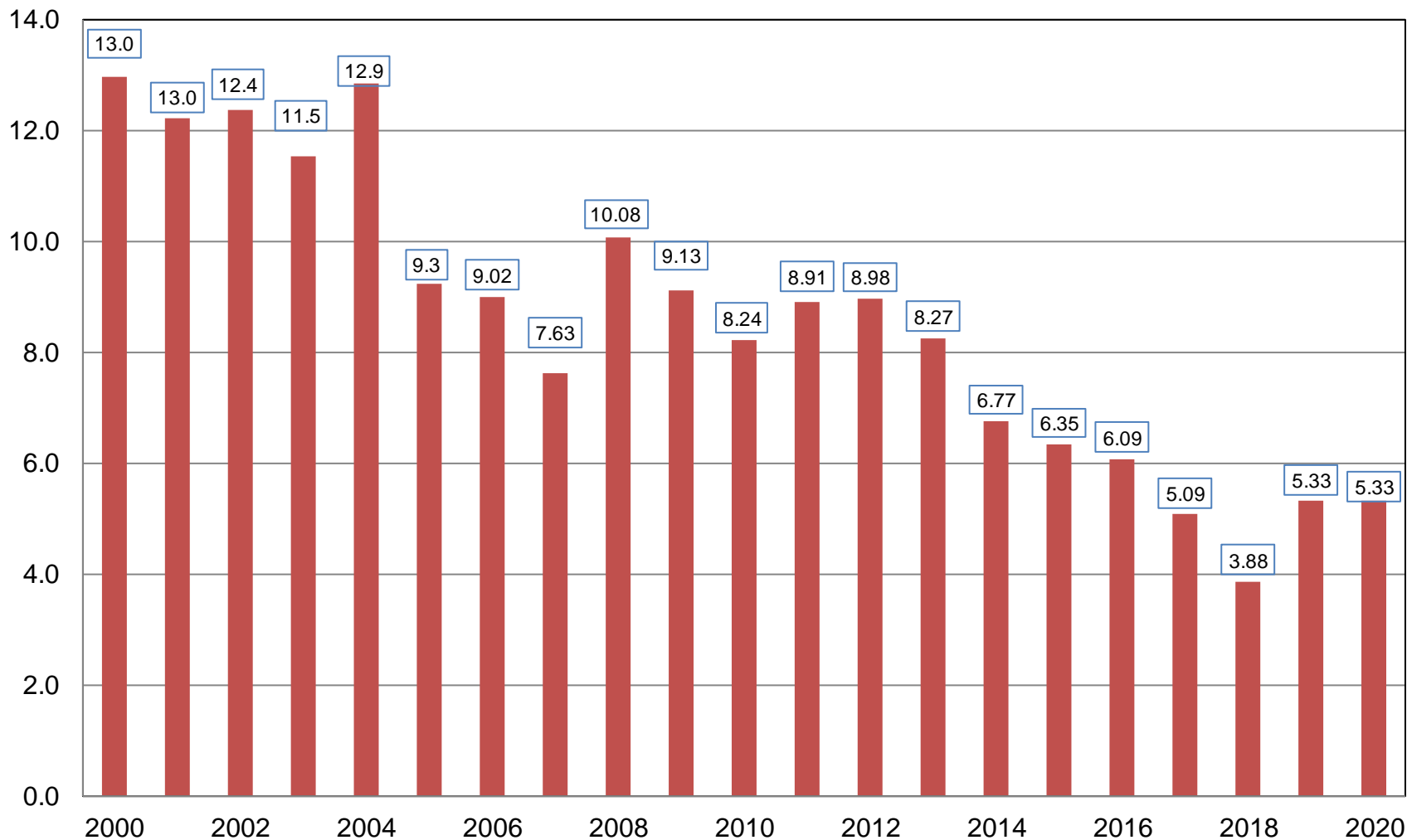


October 2019 Crop Production

Crop	Unit	October 2019	% Change From Previous Forecast	% Change From Previous Season
Production				
Oranges	Mil Tons	5.33	NA	-<0.1
Grapefruit	Thou Tons	592	NA	+5.0
Tangerines & Mandarins	Thou Tons	970	NA	-10.8
Lemons	Thou Tons	856	NA	-11.4

Orange Production United States

Million Tons





Survey Overview

	Ag Yield	Objective Yield
Survey Type	Farmer Reported	Field Measurement
Crops Included	Field Crops	Corn, Cotton, Soybeans
Sample Size	10,861	2,905
Collection Period	Sept 28 – Oct 4	Sept 24 – Oct 1



October 2019 Crop Production

Crop	Unit	October 2019	% Change From Previous Estimate	% Change From Previous Season
Planted Area				
Corn	Mil Ac	89.9	-0.1	+0.9
Soybeans	Mil Ac	76.5	-0.3	-14.3
Sorghum	Mil Ac	5.26	-0.6	-7.6
Sunflowers	Mil Ac	1.36	-1.5	+4.4
Canola	Mil Ac	2.04	+1.1	+2.5
Dry Edible Beans	Mil Ac	1.31	-1.6	-37.2
Sugarbeets	Mil Ac	1.13	+0.4	+2.0



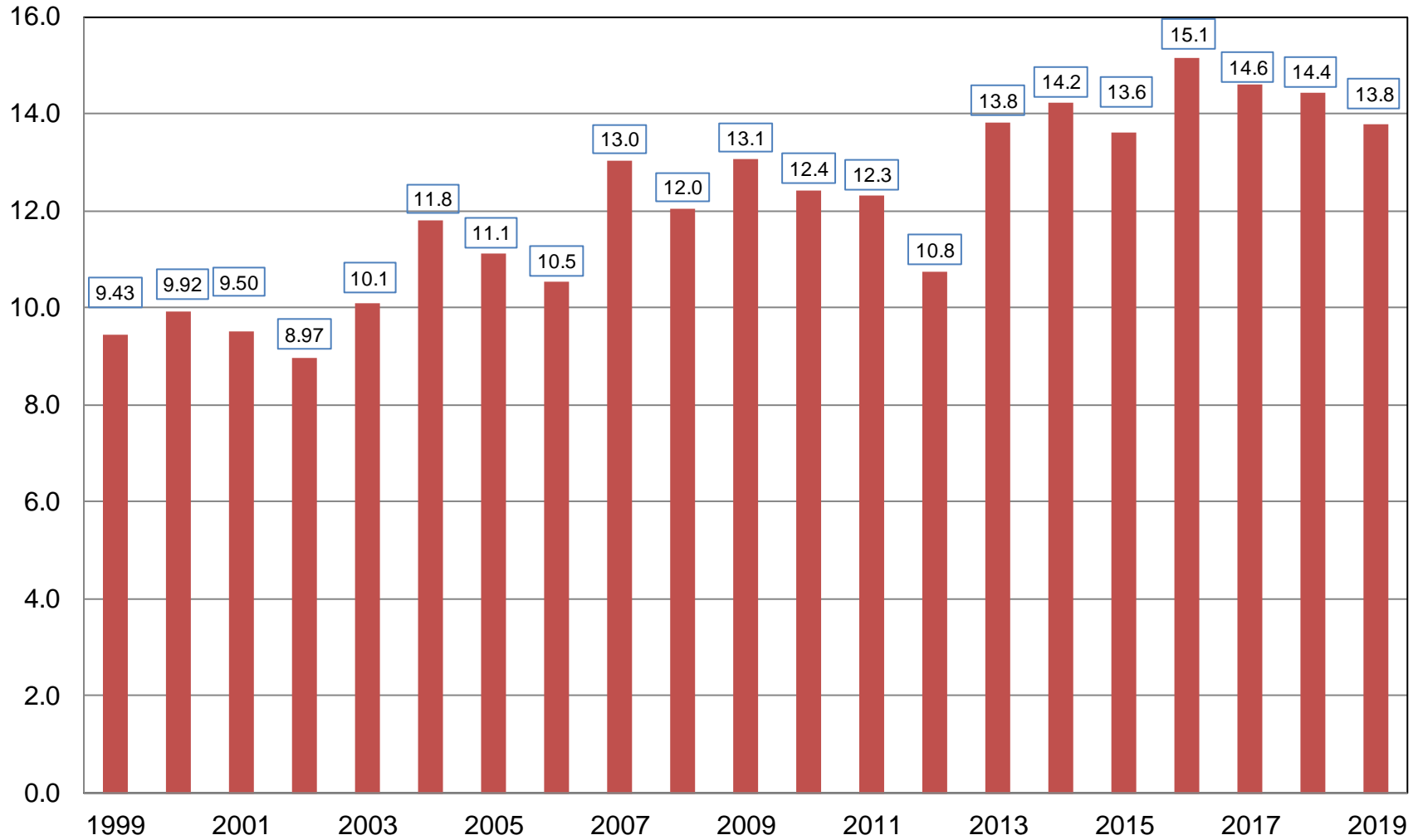
October 2019 Crop Production

Crop	Unit	October 2019	% Change From Previous Forecast	% Change From Previous Season
Corn				
Harvested	Mil Ac	81.8	-0.2	+0.1
Yield	Bu/Ac	168.4	+0.1	-4.5
Production	Bil Bu	13.8	-0.1	-4.4



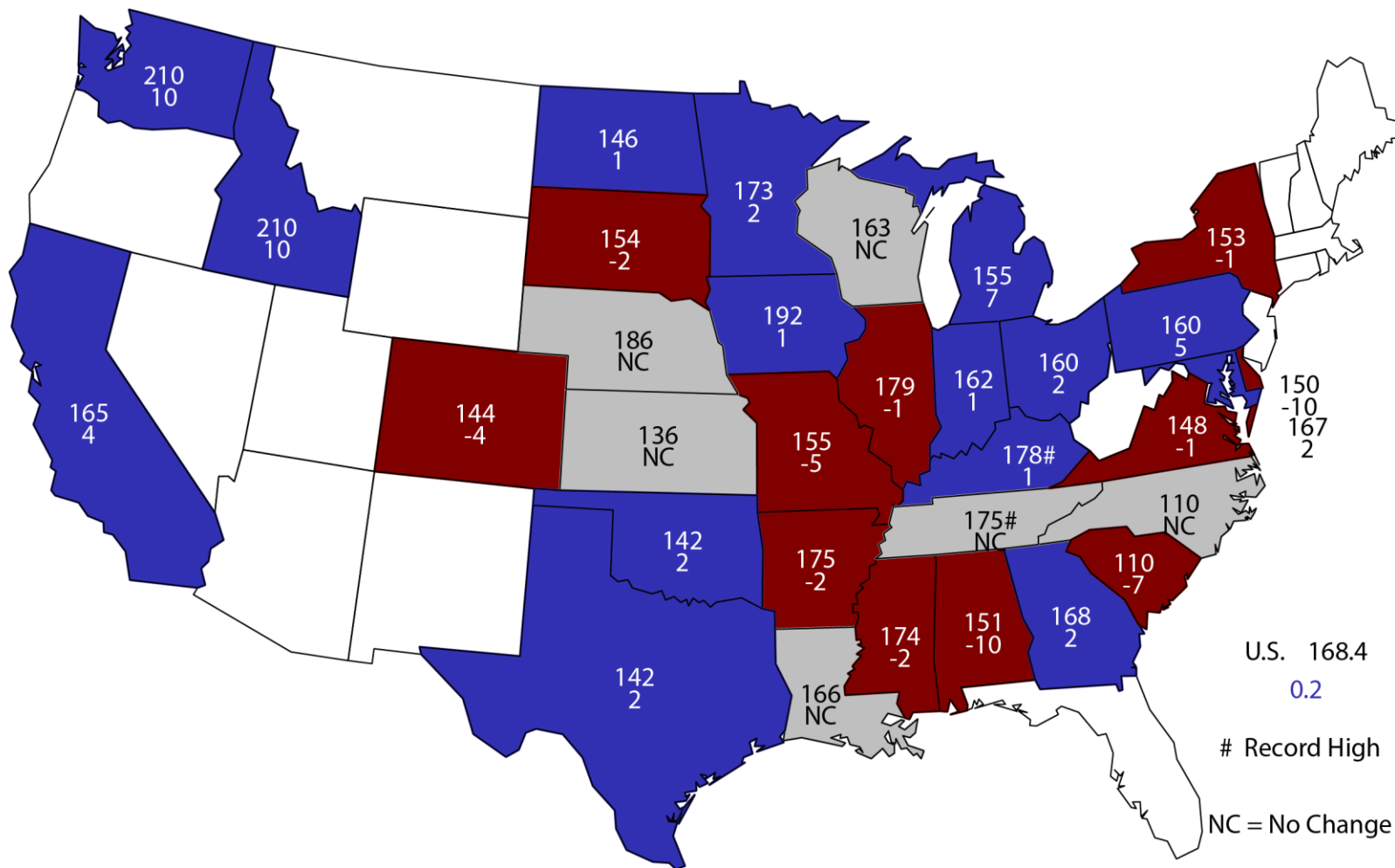
Corn for Grain Production United States

Billion Bushels



October 1, 2019 Corn Yield

Bushels and Change From Previous Forecast

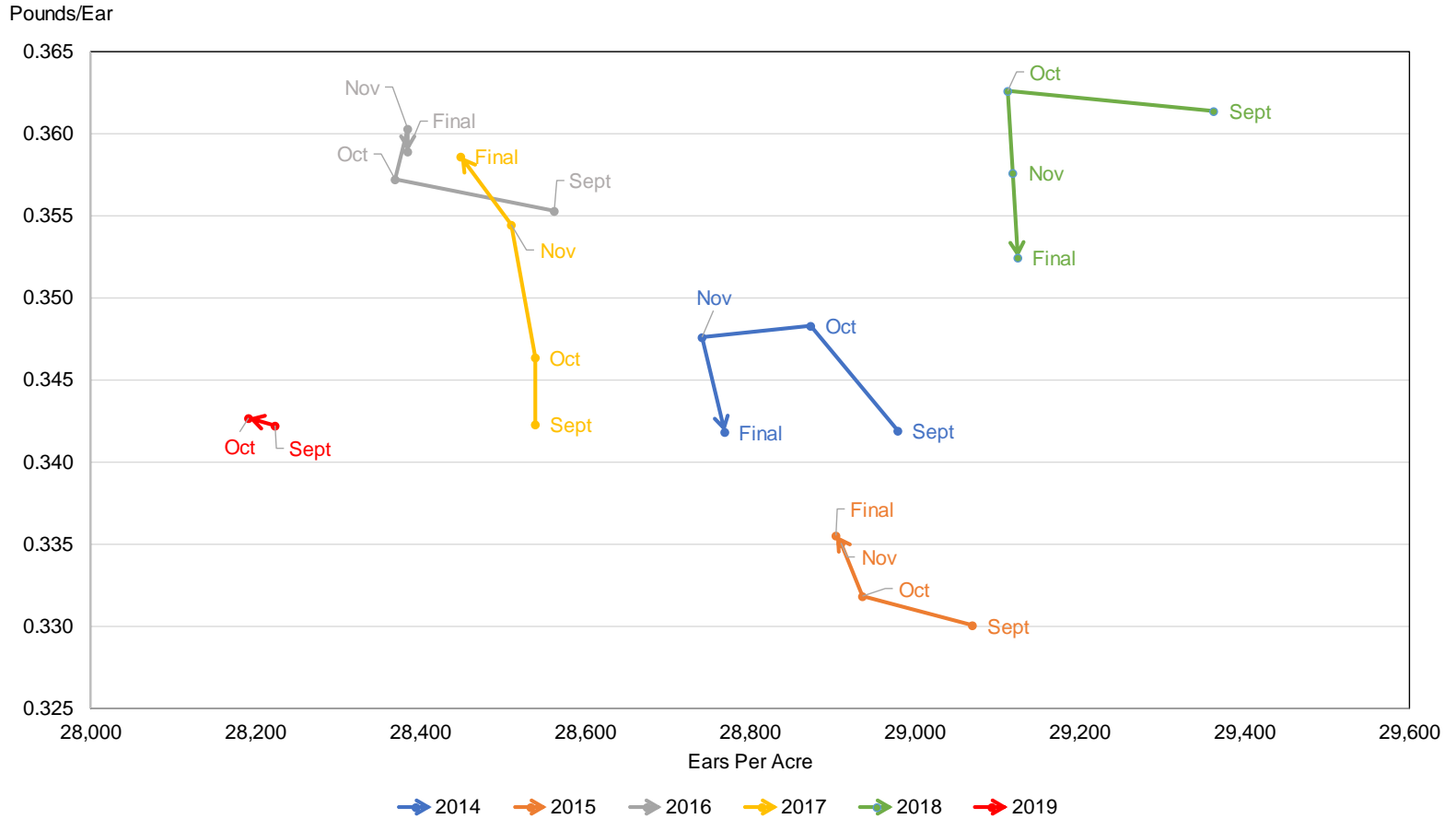


U.S. 168.4
0.2

Record High
NC = No Change

Corn Objective Yield Region Ears per Acre vs. Implied Ear Weight

Note: Implied Ear Weight is only calculated for display purposes. Ears per Acre are from survey.



Implied Ear Weight = Published Yield * 56 / Ears per Acre



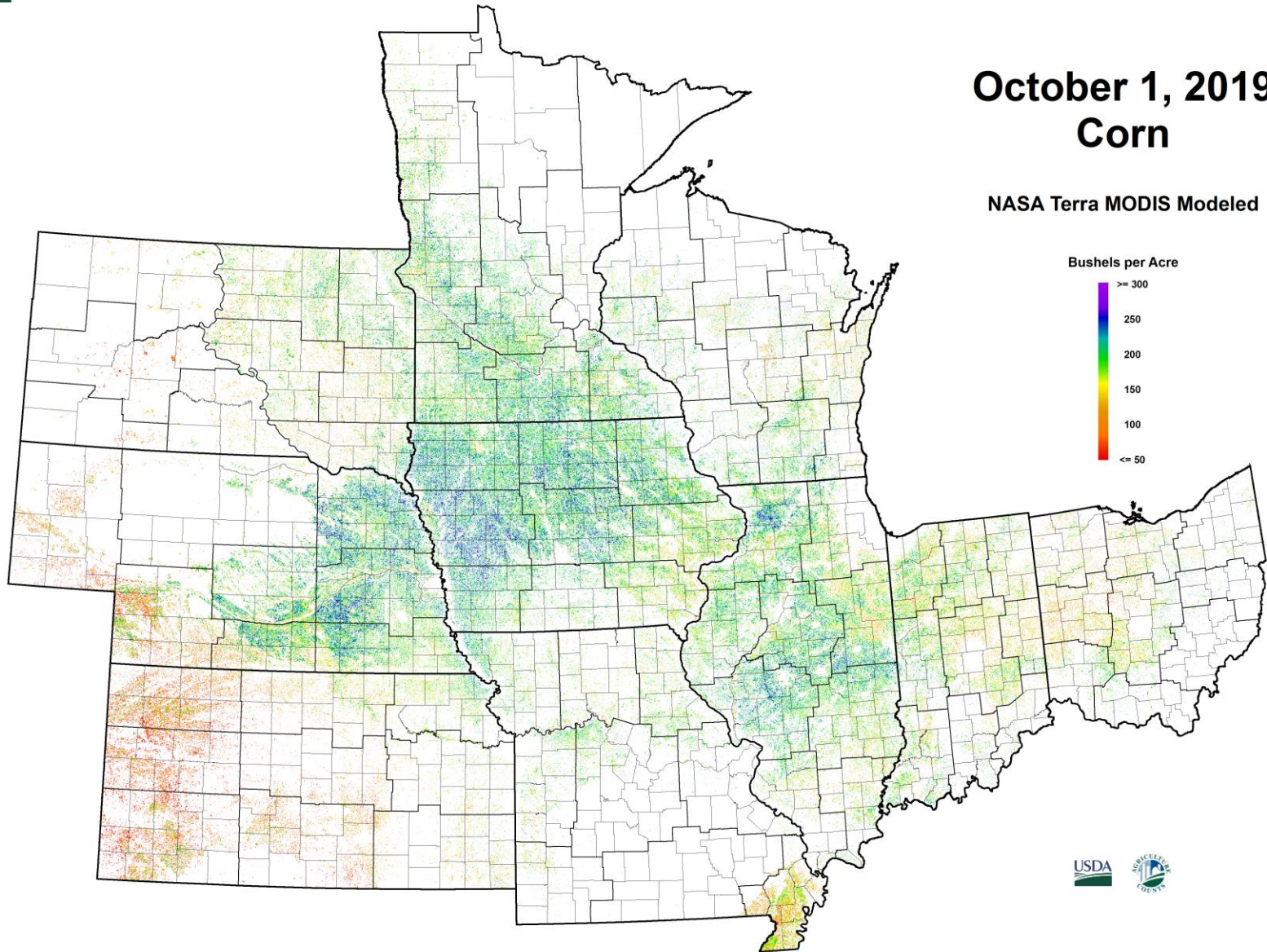
Corn Objective Yield - October

Percent of Samples Processed in the Lab

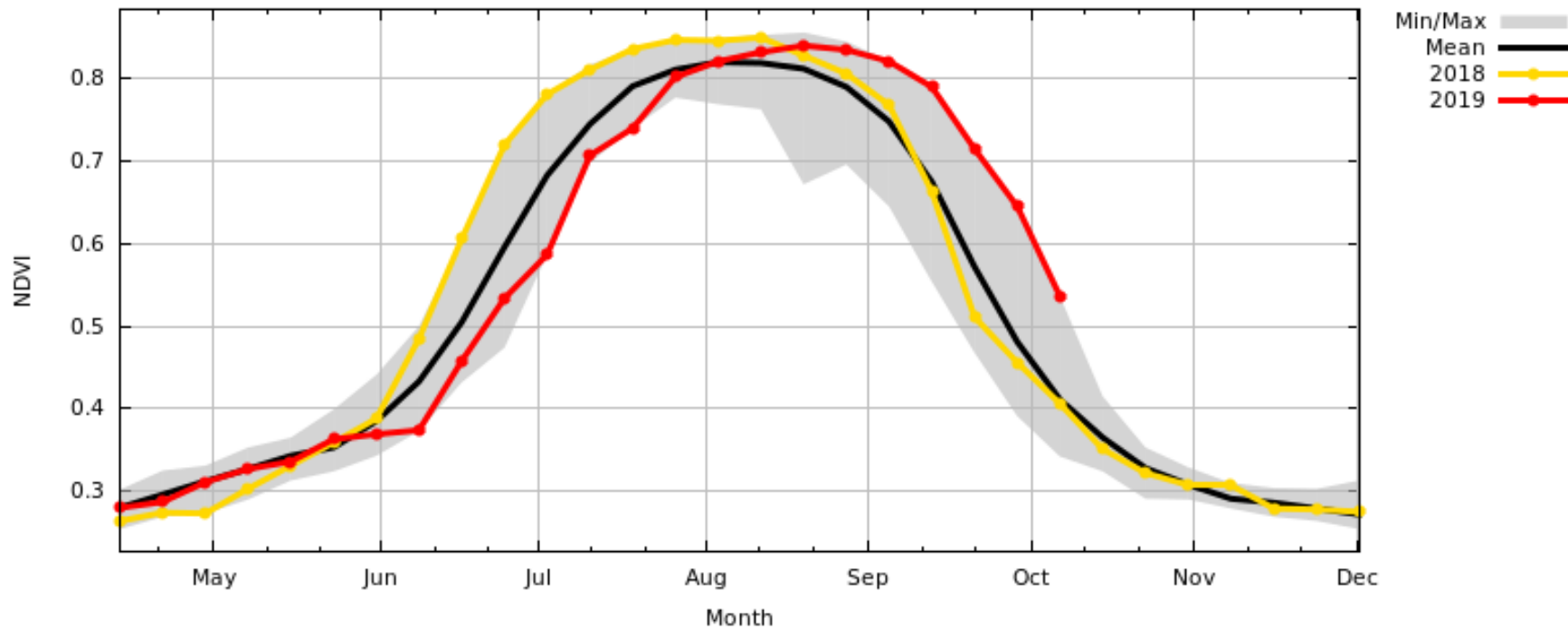
Year	Dent Stage	Mature
	<i>Percent</i>	
2015	16	70
2016	17	73
2017	41	51
2018	13	80
2019	49	29

October 1, 2019 Corn

NASA Terra MODIS Modeled



Terra MODIS NDVI 8-day
United States



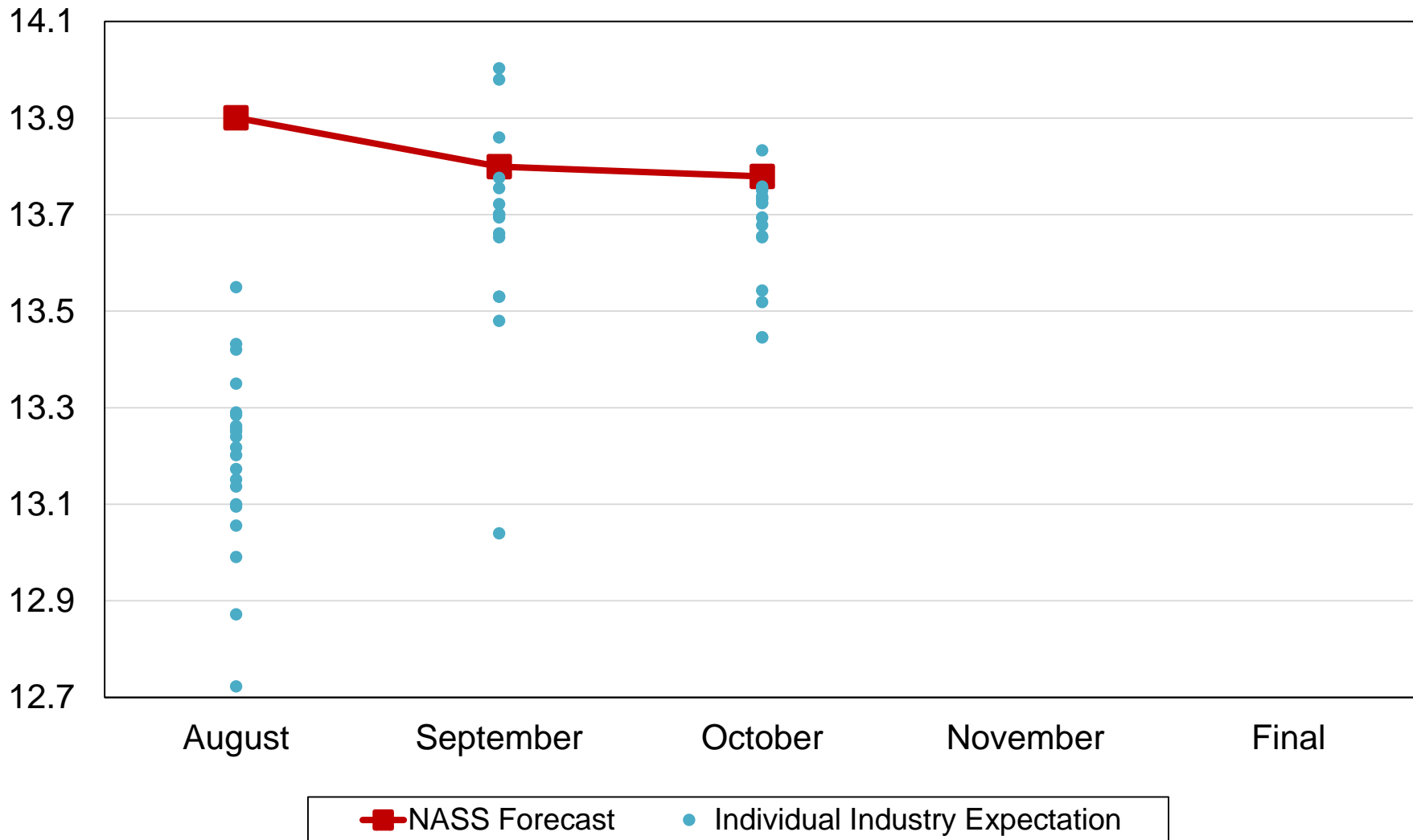
Sat Terra EOS AM
 Product MODIS NDVI 8-day
 Mean 2001-2015
 Mask NASS_2011-2016_com
 Shape ADM
 Unit United States

NASA/GSFC/GIMMS
 USDA/FAS/IPAD



2019 United States Corn Production Industry Expectations vs NASS

Billion Bushels





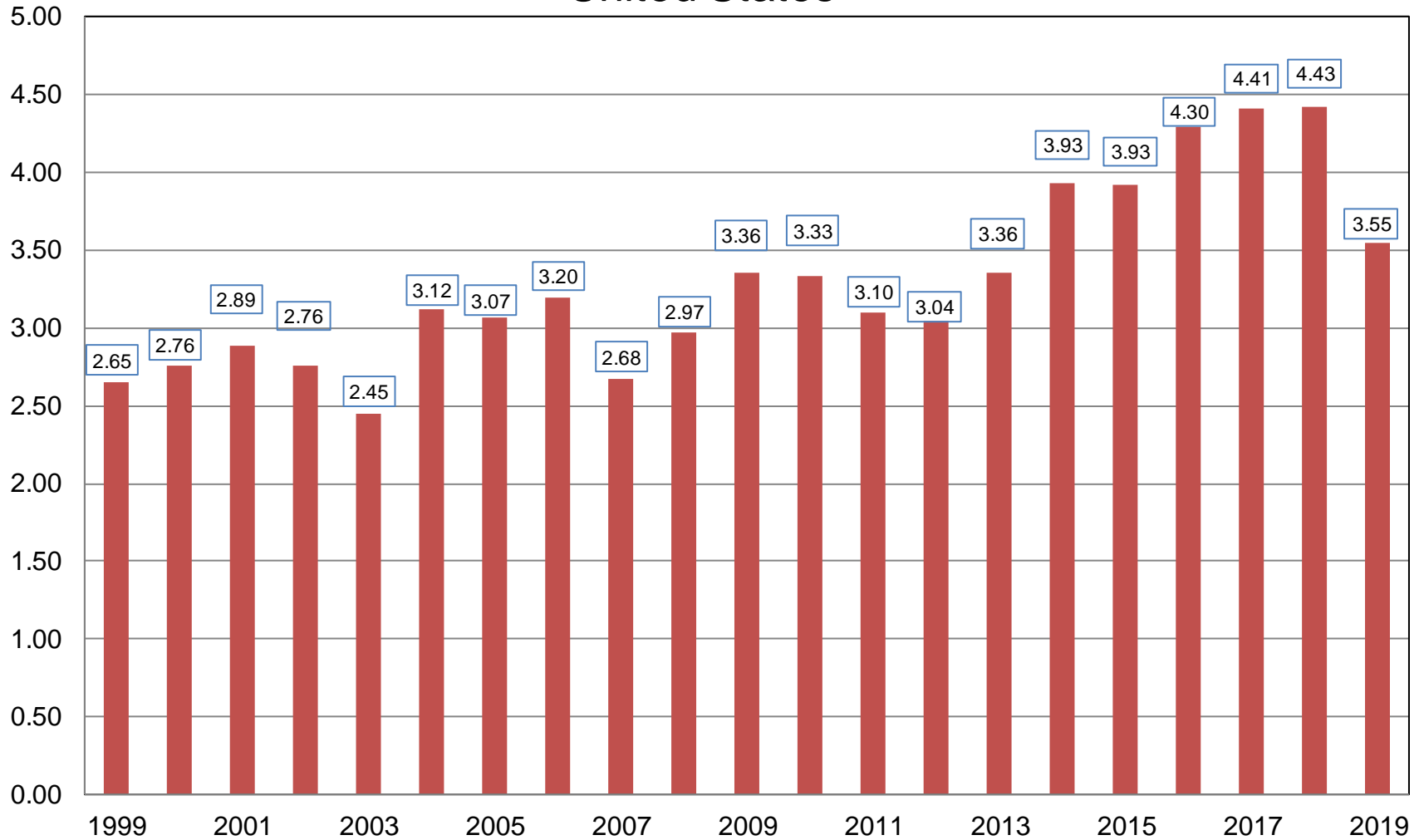
October 2019 Crop Production

Crop	Unit	October 2019	% Change From Previous Forecast	% Change From Previous Season
Soybeans				
Harvested	Mil Ac	75.6	-0.3	-13.7
Yield	Bu/Ac	46.9	-2.1	-7.3
Production	Bil Bu	3.55	-2.3	-19.8



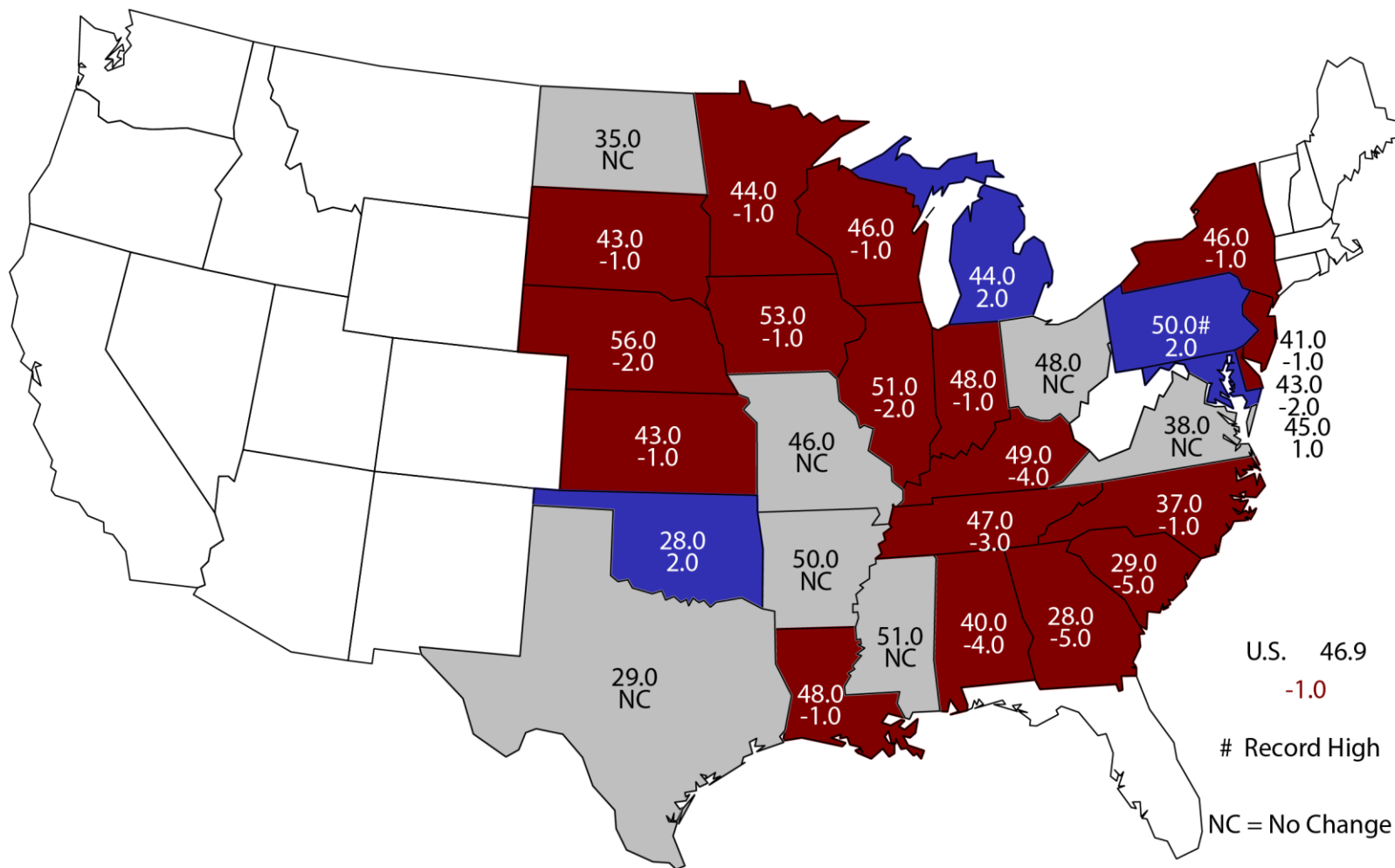
Soybean Production United States

Billion Bushels



October 1, 2019 Soybean Yield

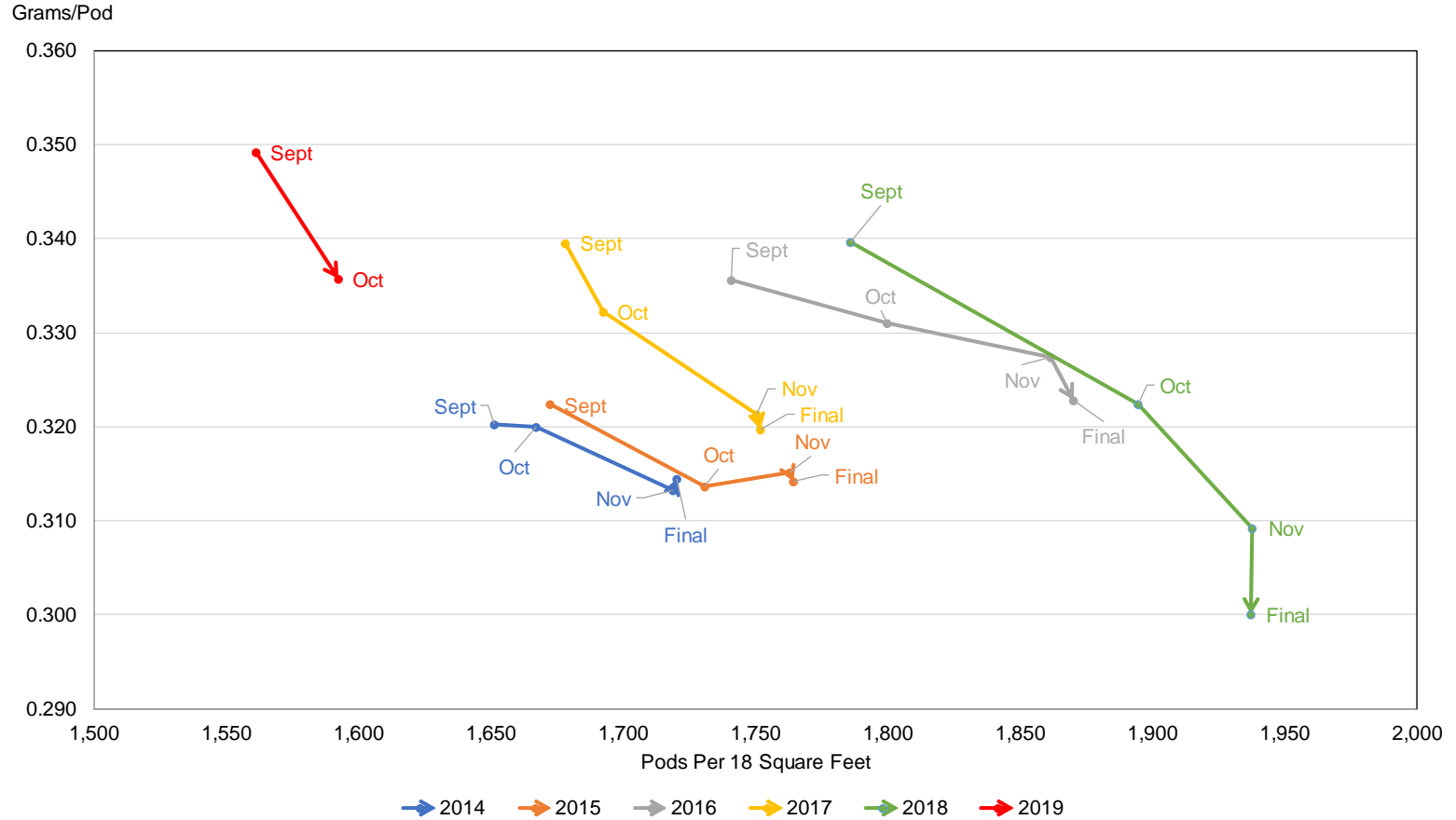
Bushels and Change From Previous Forecast



U.S. 46.9
 -1.0
 # Record High
 NC = No Change

Soybean Objective Yield Region Pods per 18 Square Feet vs. Implied Pod Weight

Note: Implied Pod Weight is only calculated for display purposes. Pods per 18 Square Feet are from survey.



$$\text{Implied Pod Weight} = \text{Published Yield} / \text{Pods per 18 Square Feet} / 0.0889$$



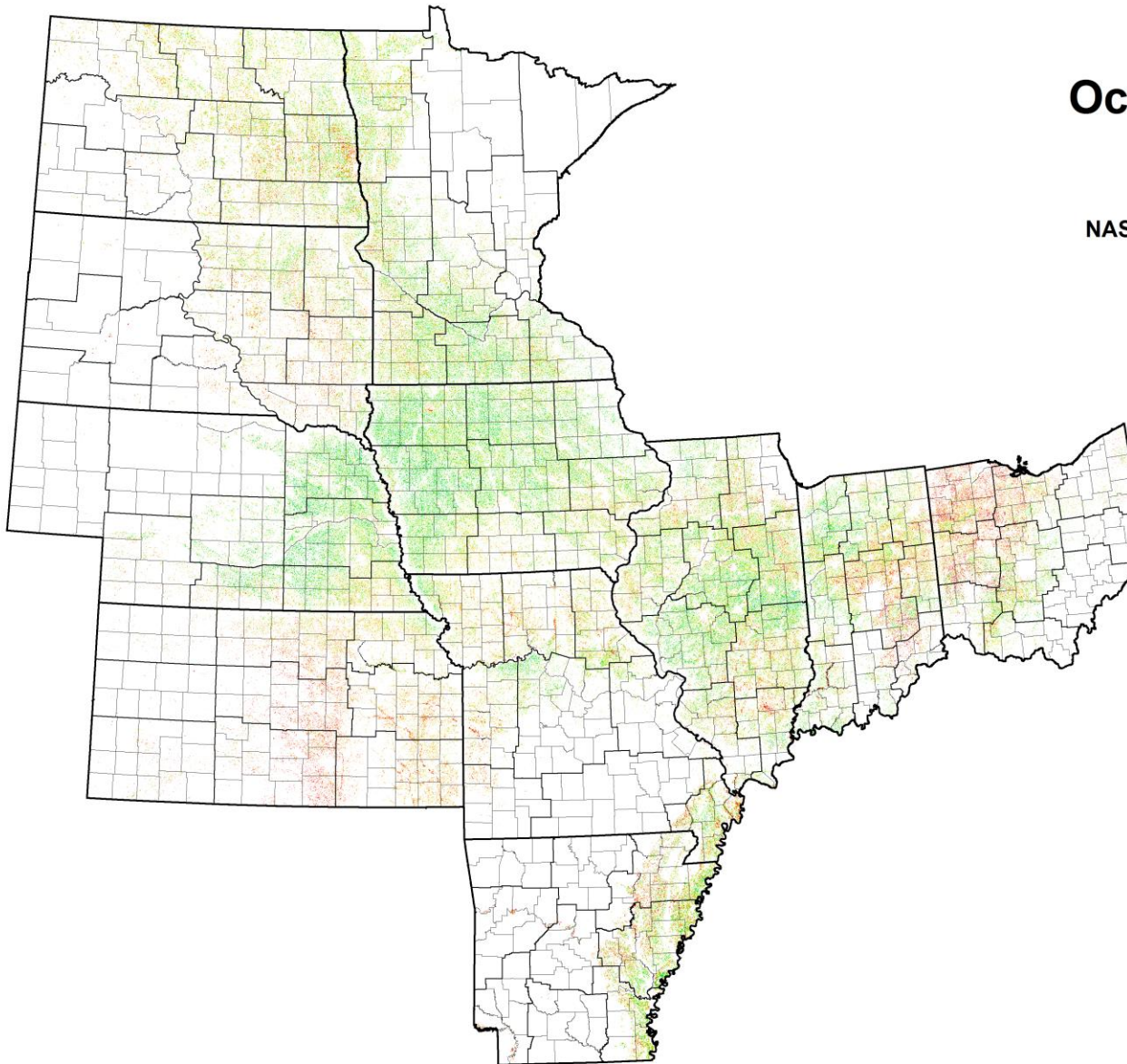
Soybean Objective Yield - October

Percent of Samples Processed in the Lab

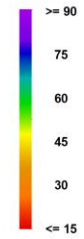
Year	Mature
	<i>Percent</i>
2015	54
2016	53
2017	49
2018	57
2019	25

October 1, 2019 Soybeans

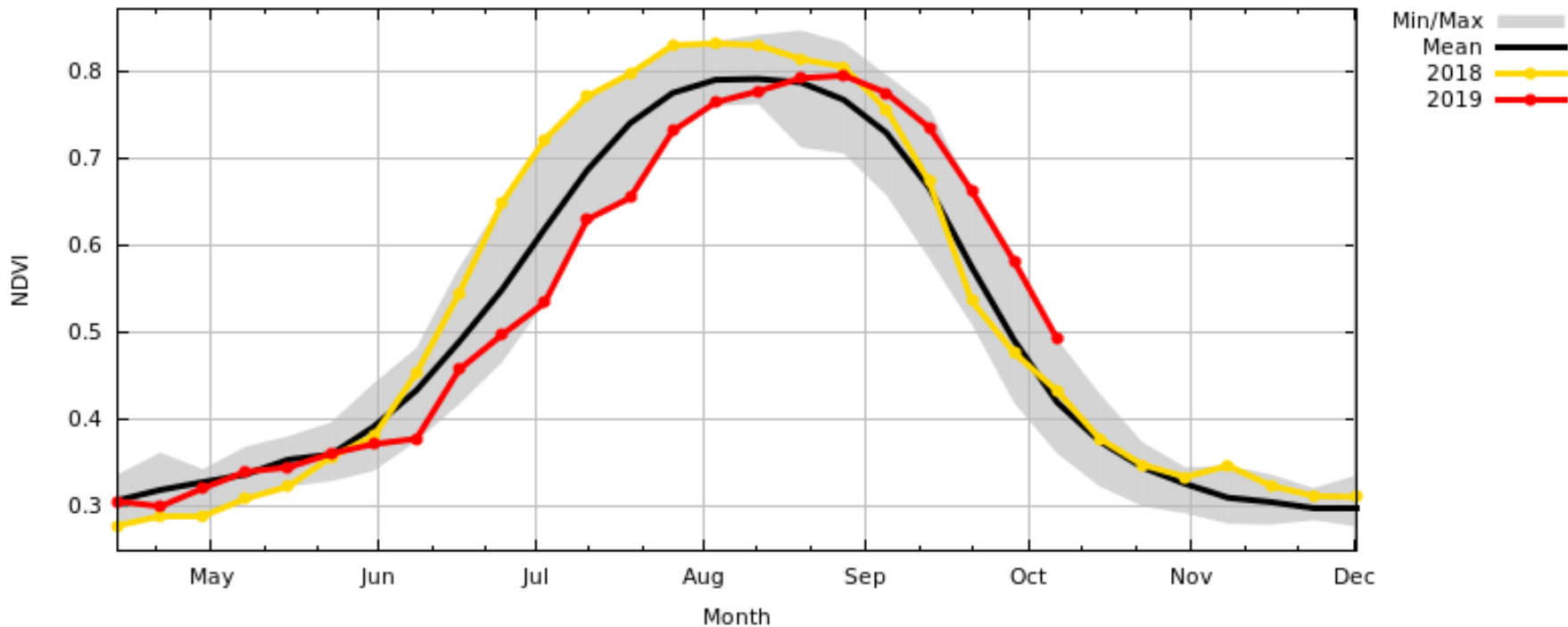
NASA Terra MODIS Modeled



Bushels per Acre



Terra MODIS NDVI 8-day
United States



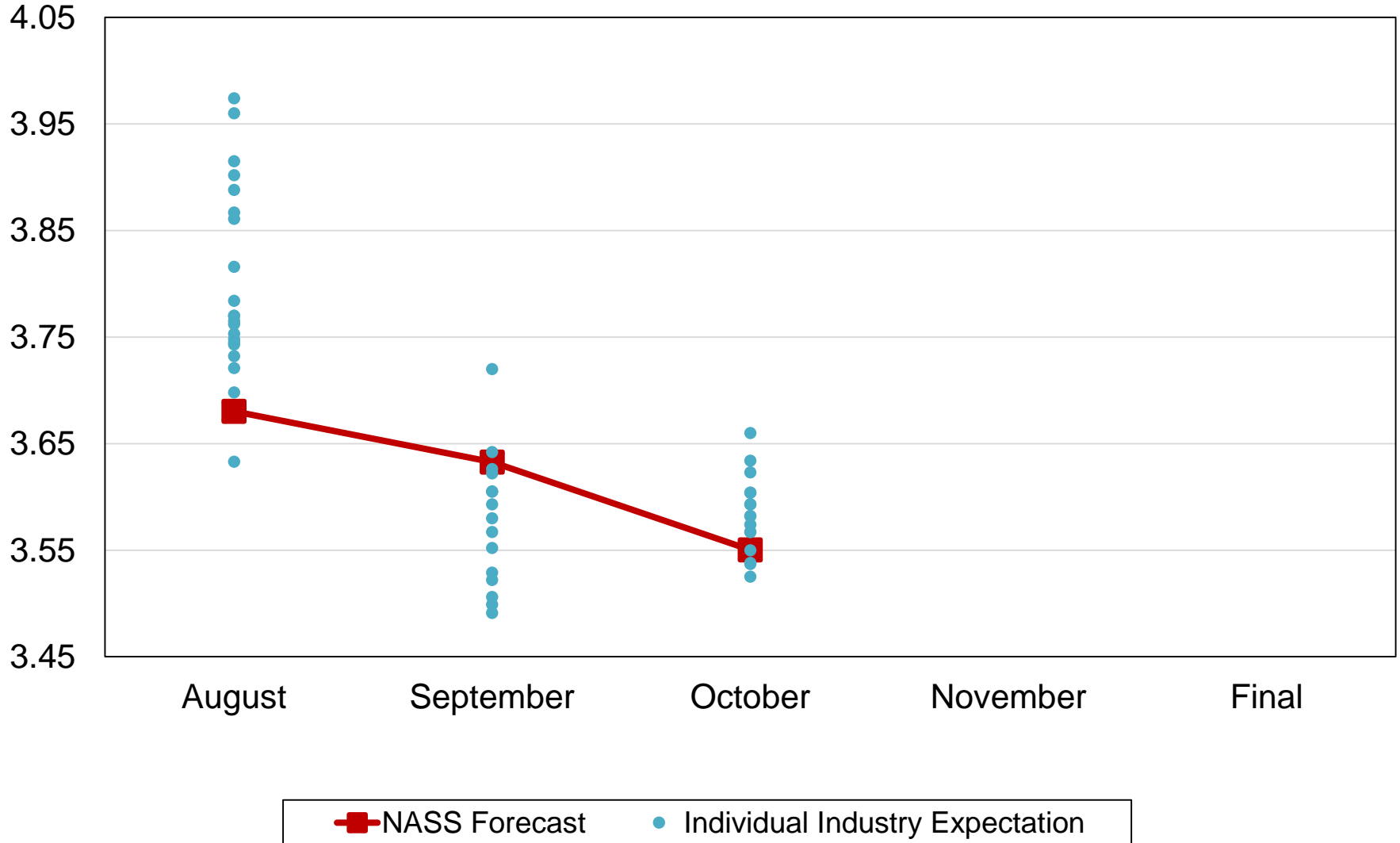
Sat Terra EOS AM
 Product MODIS NDVI 8-day
 Mean 2001-2015
 Mask NASS_2011-2016_soybeans
 Shape ADM
 Unit United States

NASA/GSFC/GIMMS
 USDA/FAS/IPAD



2019 United States Soybean Production Industry Expectations vs NASS

Billion Bushels





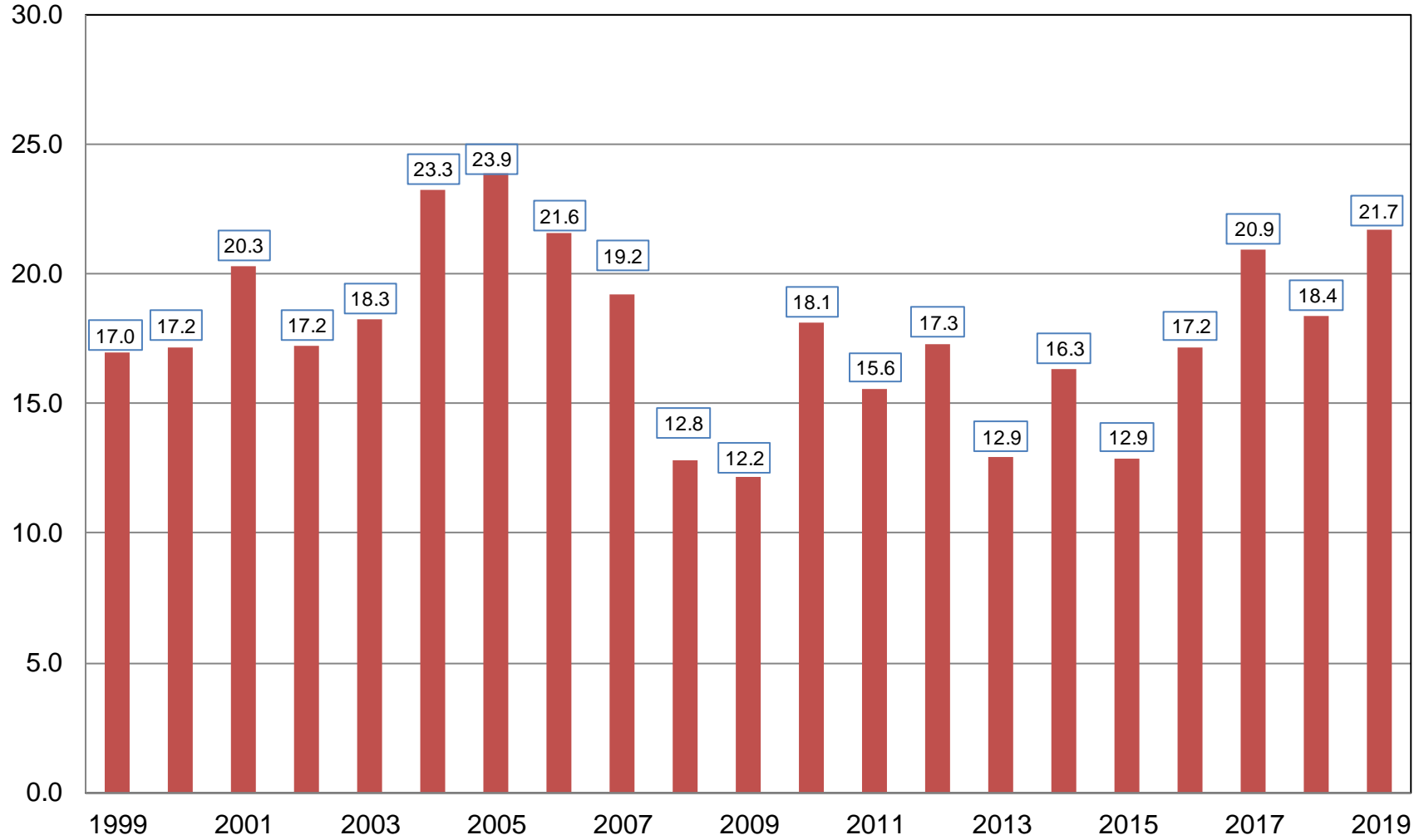
October 2019 Crop Production

Crop	Unit	October 2019	% Change From Previous Forecast	% Change From Previous Season
All Cotton				
Harvested	Mil Ac	12.5	NC	+22.6
Yield	Lb/Ac	833	-0.7	-3.6
Production	Mil Bls	21.7	-0.7	+18.2



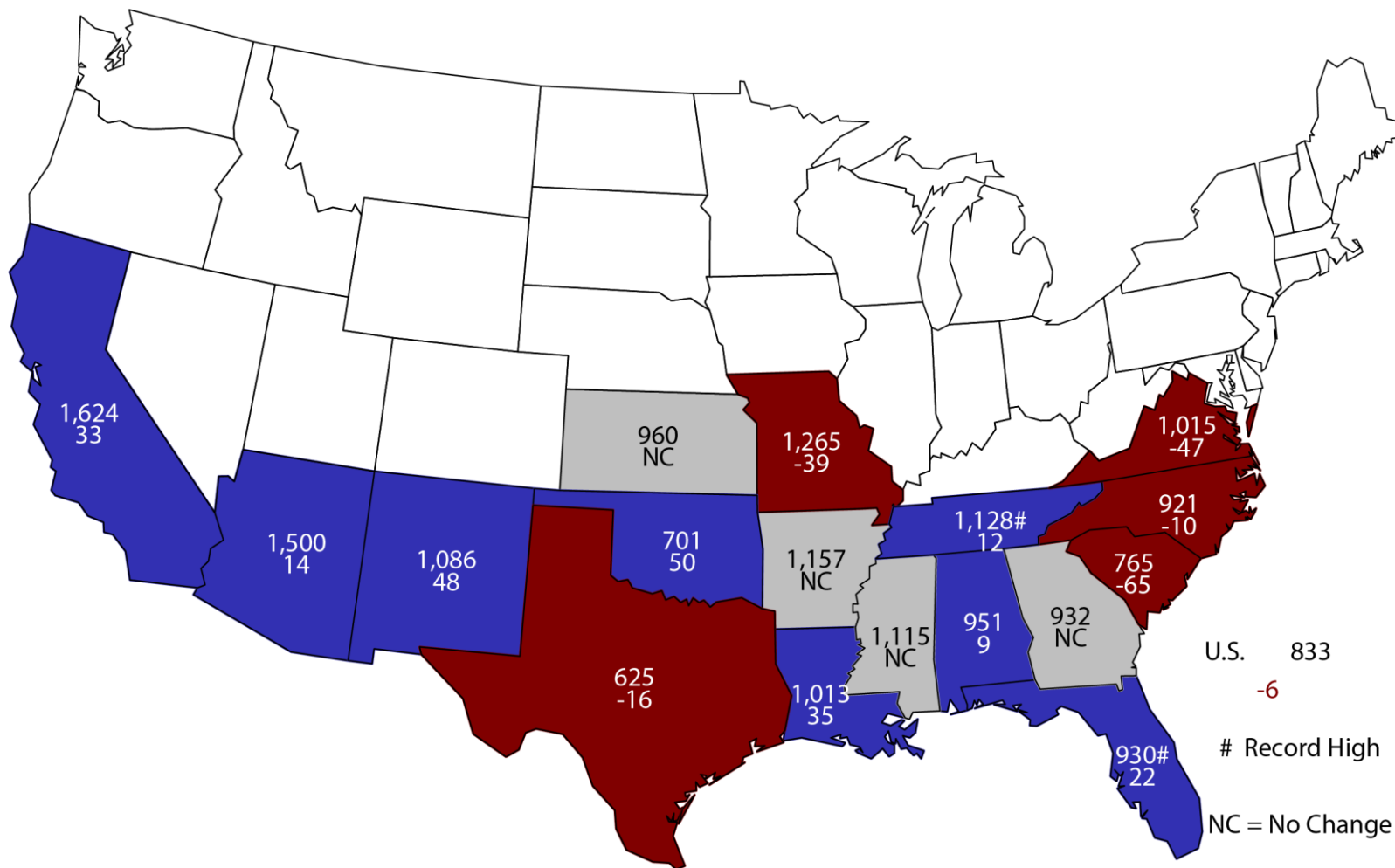
All Cotton Production United States

Million Bales



October 1, 2019 All Cotton Yield

Pounds and Change From Previous Forecast



U.S. 833
 -6
 # Record High
 NC = No Change



October 2019 Crop Production

Crop	Unit	October 2019	% Change From Previous Forecast	% Change From Previous Season
Rice				
Harvested	Mil Ac	2.48	NC	-15.0
Yield	Lbs/Ac	7,616	+0.7	-1.0
Production	Mil Cwt	189	+0.7	-15.9



October 2019 Crop Production

Crop	Unit	October 2019	% Change From Previous Forecast	% Change From Previous Season
Peanuts				
Harvested	Mil Ac	1.38	NC	+0.7
Yield	Lbs/Ac	3,964	-3.0	-0.9
Production	Bil Lbs	5.48	-3.0	-0.3



October 2019 Crop Production

Crop	Unit	October 2019	% Change From Previous Forecast	% Change From Previous Season
Sorghum				
Harvested	Mil Ac	4.72	-0.4	-6.8
Yield	Bu/Ac	73.9	-0.5	+2.5
Production	Mil Bu	349	-0.8	-4.5



October 2019 Crop Production

Crop	Unit	October 2019	% Change From Previous Forecast	% Change From Previous Season
Alfalfa Hay				
Harvested	Mil Ac	16.8	NC	+1.3
Yield	Tons/Ac	3.22	-2.1	+1.6
Production	Mil Tons	54.2	-2.1	+3.0



October 2019 Crop Production

Crop	Unit	October 2019	% Change From Previous Forecast	% Change From Previous Season
All Other Hay				
Harvested	Mil Ac	35.9	NC	-0.8
Yield	Tons/Ac	2.13	+0.9	+8.7
Production	Mil Tons	76.7	+1.4	+8.1



October 2019 Crop Production

Crop	Unit	October 2019	% Change From Previous Forecast	% Change From Previous Season
Production				
Sugarcane	Mil Tons	34.8	+0.1	+0.7
Sugarbeets	Mil Tons	33.6	+0.2	+1.4
All Tobacco	Mil Lbs	448	-7.2	-16.0



October 2019 Crop Production

Crop	Unit	October 2019	% Change From Previous Forecast	% Change From Previous Season
Production				
Canola	Bil Lbs	3.71	NA	+2.6
Sunflowers	Bil Lbs	2.25	NA	+6.9



October 2019 Crop Production

Crop	Unit	October 2019	% Change From Previous Forecast	% Change From Previous Season
Production				
Dry Edible Beans	Mil Cwt	23.8	-3.1	-36.5
Pecans	Mil Lbs	281	NA	+15.7



Upcoming Events

Release Date	Title
October 23	Cotton Ginnings
October 25	Cattle on Feed Rice Stocks
October 31	Agricultural Prices
November 1	CAIR: Cotton, Fats & Oils, Flour Milling, and Grain Crushings
November 8	Crop Production Cotton Ginnings



USDA Data Users' Meeting

USDA NASS Data Users' Meeting **Tuesday, October 15, 2019**

American Farm Bureau Federation
600 Maryland Ave SW #1000w
Washington, DC 20024



STAT CHAT SERIES

Join @usda_nass
on Twitter using
#StatChat to discuss
the *Crop Production*
report with
Lance Honig.

@usda_nass
#STATCHAT



THURS, OCT. 10 @ 1PM ET



USDA-NASS
10-10-19



United States Department of Agriculture
National Agricultural Statistics Service

All Reports Available At
www.nass.usda.gov

For Questions
202-720-2127
800-727-9540
nass@nass.usda.gov