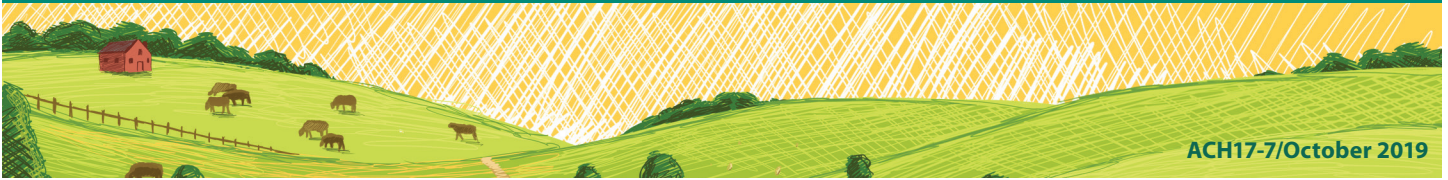


American Indian/Alaska Native Producers

Three-fourths of farms specialize in livestock production



ACH17-7/October 2019

In 2017, the United States had 79,198 producers who identified as American Indian or Alaska Native, either alone or in combination with another race. They accounted for 2.3 percent of the country's 3.4 million producers, with the majority in the western and Plains states. American Indian or Alaska Native producers were younger and more likely to be female than U.S. producers overall. Their farms accounted for less than 1 percent of U.S. agriculture sales and more than 6 percent of U.S. farmland.

79,198
producers



59 million
acres



\$3.5 billion
agriculture sales



Number and Location

The 2017 Census of Agriculture revised the demographic data collected to better capture the contributions of all persons involved in agricultural production. In response to detailed questions about farm decision making, more farms reported multiple individuals involved in farm operations.

As a result of the new approach to counting producers, the total number of U.S. producers increased 7 percent between 2012 and 2017. The number of American Indian or Alaska Native producers increased 10 percent. The number of farms they operated increased 7 percent to 60,083.

With more American Indian/Alaska Native producers than any other state, Arizona also ranked first in the share they represent of the state's total producers (59 percent). In New Mexico it was 22 percent, and Oklahoma 13 percent. These three states account for more than half of U.S. farms with American Indian or Alaska Native producers.

Number of Producers and Farms, AI/AN and All U.S.

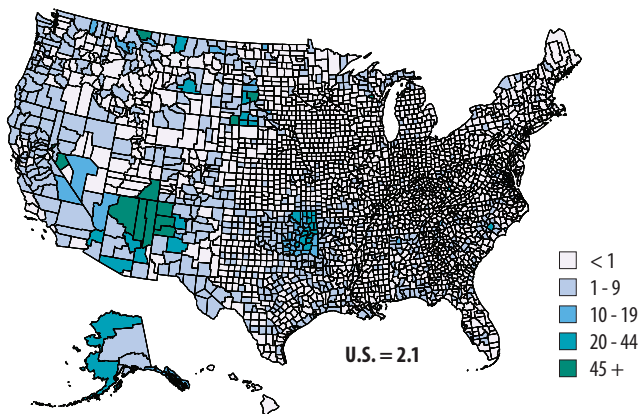
	2012	2017	% change
Producers			
AI/AN	71,947	79,198	+10
All U.S.	3,180,074	3,399,834	+7
Farms			
AI/AN-operated	56,092	60,083	+7
All U.S.	2,109,303	2,042,220	-3

Top States AI/AN Producers, 2017

Arizona	19,481
Oklahoma	17,102
New Mexico	8,812
Texas	5,663
California	2,537
Montana	2,130
Missouri	1,544
Utah	1,467
Arkansas	1,326
Alabama	1,326
Oregon	1,255
South Dakota	1,242

68 The percent of American Indian/Alaska Native producers who live in the top five states.

American Indian/Alaska Native-operated Farms as Percent of Total Farms, by County, 2017



Five counties had more than 1,000 farms operated by American Indian/Alaska Native producers. Three in Arizona: Apache (5,258 farms), Navajo (3,795), and Coconino (1,947). Two in New Mexico: McKinley (2,285) and San Juan (2,091).

Note: Based on 42,705 farms with producers who identified themselves as American Indian or Alaska Native alone.

SNAPSHOT

American Indian/Alaska Native Producers, 2017

Number = 79,198*

	AI/AN (percent)	All U.S.
Sex		
Male	56	64
Female	44	36
Age		
<35	9	8
35 - 64	59	58
65+	32	34
Years farming		
10 or less	28	27
11 or more	72	73
Lived on their farm	80	74
Worked off farm		
No days	37	39
1 to 199 days	24	21
200+ days	39	40
Primary occupation		
Farming	47	42
Other	53	58
Hispanic	5	3
With military service	11	11
Average age (years)	56.6	57.5

*Of the total, 58,199 identified themselves as American Indian or Alaska Native alone; and 20,999 as that race in combination with another race. Data collected for up to four producers per farm.

About the Census

The Census of Agriculture, conducted once every five years, is a complete count of U.S. farms and ranches and the people who operate them. Results from the 2017 and earlier censuses are available at national, state, and county levels.

See the searchable database Quick Stats, the new Census Data Query Tool, downloadable PDF reports, maps, and a variety of topic-specific products including profiles by race, ethnicity, and sex.

www.nass.usda.gov/AgCensus

Producer Characteristics

American Indian/Alaska Native producers are more likely to be female than producers overall (44 percent of American Indian/Alaska Native producers are female compared with 36 percent of all U.S. producers). They are also slightly younger on average (56.6 years versus 57.5 years), more likely to live on their farm or ranch, and more likely to report farming/ranching as their primary occupation.

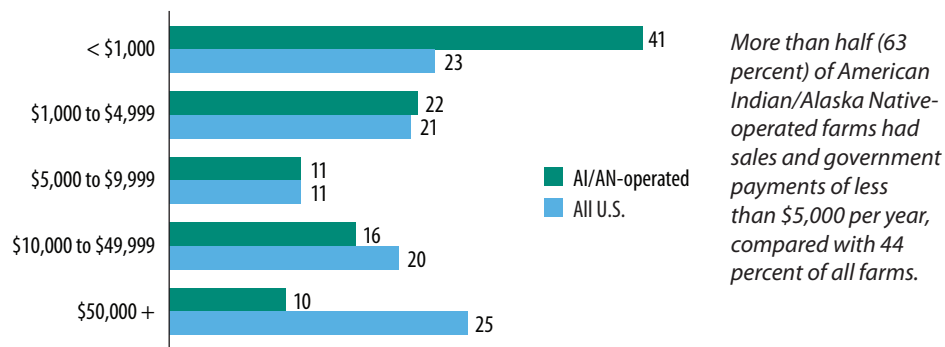
80

The percent of American Indian/Alaska Native producers who live on their farm or ranch.

Farm Characteristics

American Indian/Alaska Native-operated farms sold \$3.5 billion in agricultural products in 2017, with 40 percent (\$1.4 billion) in crop sales and 60 percent (\$2.1 billion) in sales of livestock and livestock products. These farms accounted for 0.9 percent of total U.S. agriculture sales. They received \$103 million in government payments.

American Indian/Alaska Native-operated and U.S. Farms by Economic Class, 2017 (percent)
(sales and government payments combined)



Farms and Land

American Indian/Alaska Native-operated farms accounted for 59 million acres of land, 6.5 percent of the U.S. total. The majority (73 percent) of these farms were less than 180 acres in size, like U.S. farms overall.

Farm Size in Acres	AI/AN-operated (percent of total)	All U.S.
1 to 9	25	13
10 to 49	26	29
50 to 179	22	28
180 to 499	12	15
500 +	15	15

The average size of American Indian/Alaska Native-operated farms was 978 acres in 2017.

66

The percent of American Indian/Alaska Native-operated farms with internet access.

Farm Specialization^a

Three-fourths (75 percent) of American Indian/Alaska Native-operated farms specialized in livestock production, compared with about half (53 percent) of U.S. farms overall.

	% of farms
Oilseeds and grains	3
Specialty crops (fruits, vegetables, nursery)	8
Other crops	14
Cattle and dairy	42
Hogs and pigs	1
Poultry and eggs	2
Sheep and goats	15
Other animals	15

24,744

The number of AI/AN-operated farms specializing in beef cattle.

^aRefers to the North American Industry Classification System (NAICS). More than half of a farm's sales come from the commodity.